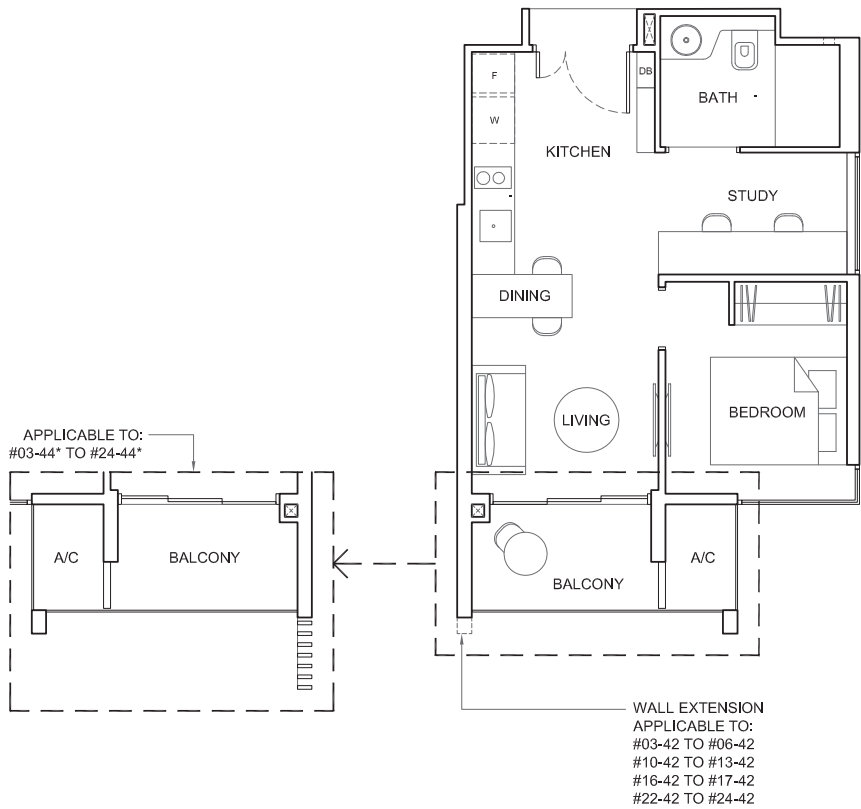


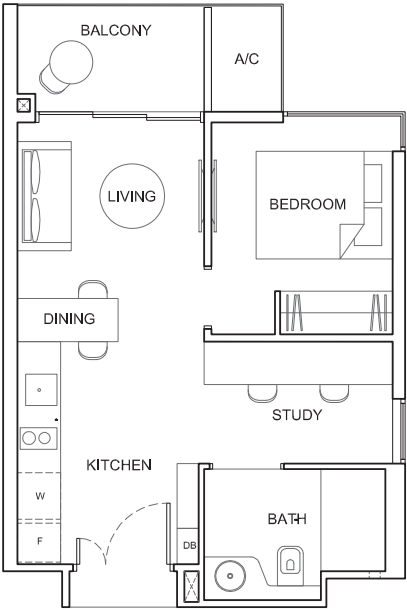
TYPE 1S1

Area: 42 sq m (include 2 sq m A/C LEDGE, 4 sq m BALCONY)  
Unit(s): #03-42 TO #24-42  
#03-44\* TO #24-44\*



TYPE 1S1-a

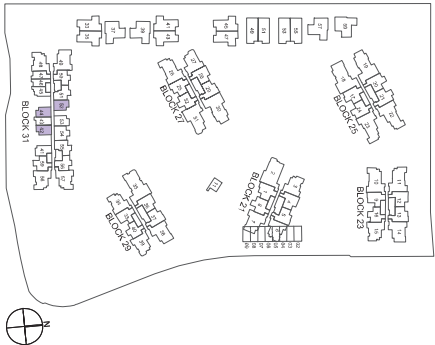
Area: 42 sq m (include 2 sq m A/C LEDGE, 4 sq m BALCONY)  
Unit(s): #03-52 TO #24-52



NOTE:

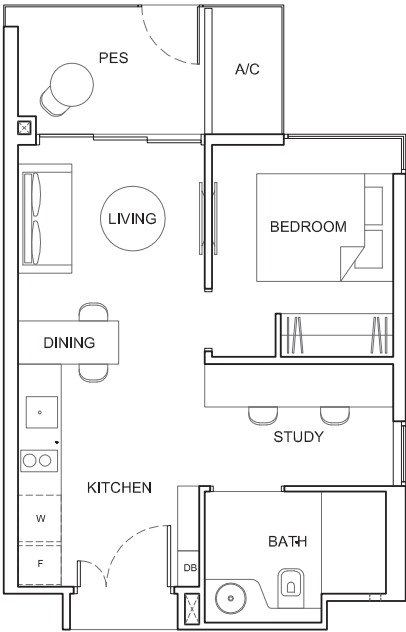
\* mirror image

Plans are subject to change/amendments as may be required and/or approved by the Developer and/or the relevant authorities and do not form part of any offer or contract. These are not drawn to scale and are for the purpose of visual presentation only.



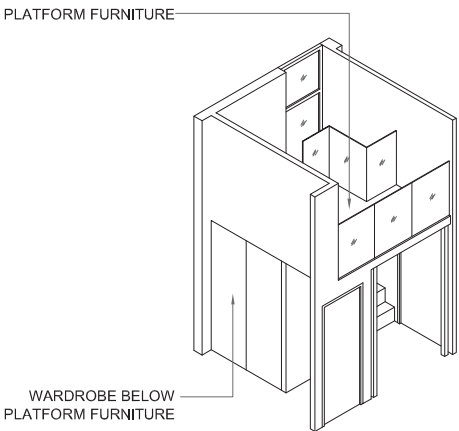
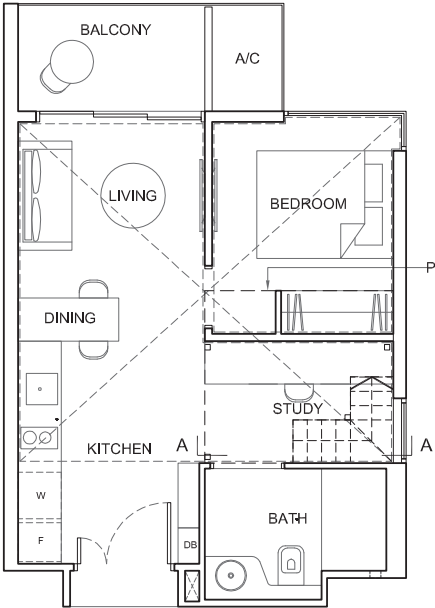
TYPE 1S1-aP

Area: 43 sq m (include 2 sq m A/C LEDGE, 5 sq m PES)  
Unit(s): #02-52

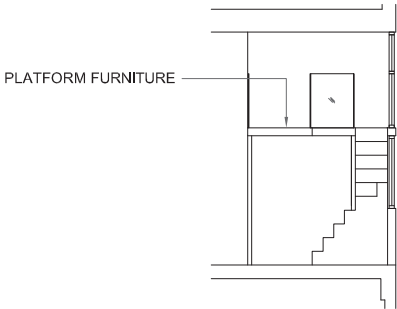


TYPE 1S1-aPH

Area: 69 sq m (include 2 sq m A/C LEDGE, 4 sq m BALCONY)  
(include 27 sq m VOID)  
Unit(s): #25-52



ISOMETRIC VIEW +

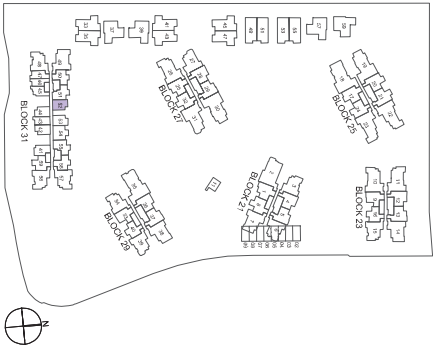


SECTION A-A

NOTE:

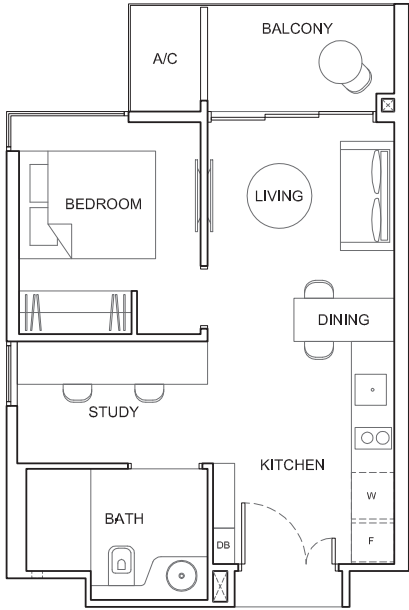
+ Isometric views have excluded railing drawings

Plans are subject to change/amendments as may be required and/or approved by the Developer and/or the relevant authorities and do not form part of any offer or contract. These are not drawn to scale and are for the purpose of visual presentation only.



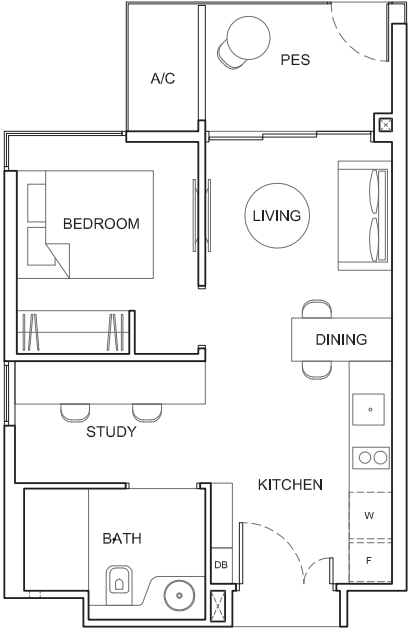
TYPE 1S1-b

Area: 42 sq m (include 2 sq m A/C LEDGE, 4 sq m BALCONY)  
Unit(s): #03-53 TO #24-53



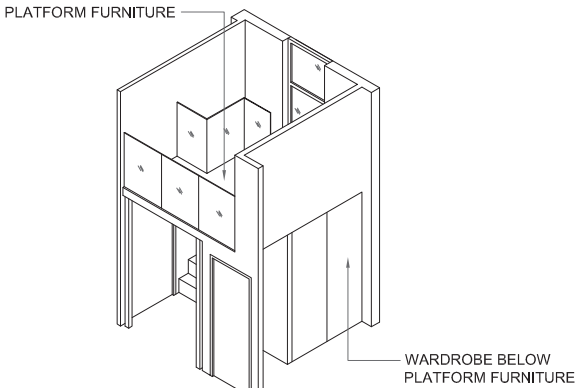
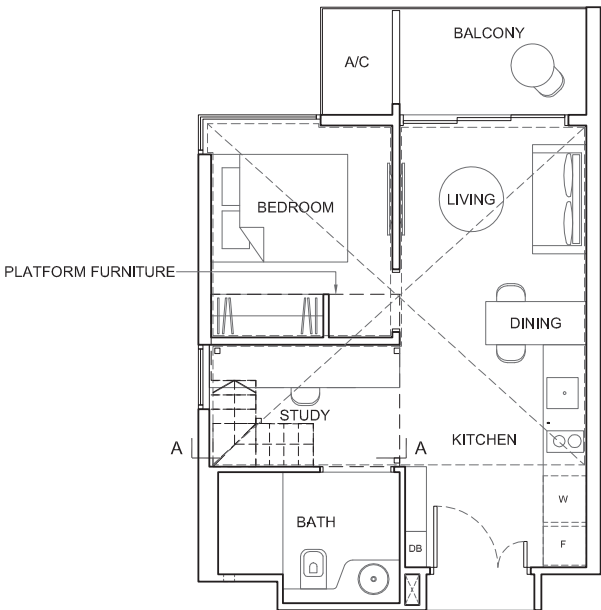
TYPE 1S1-bP

Area: 43 sq m (include 2 sq m A/C LEDGE, 5 sq m PES)  
Unit(s): #02-53

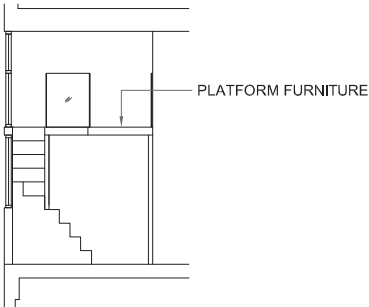


TYPE 1S1-bPH

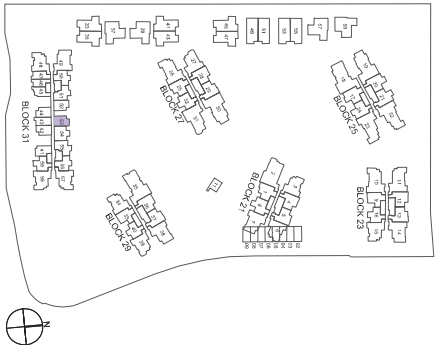
Area: 69 sq m (include 2 sq m A/C LEDGE, 4 sq m BALCONY)  
(Include 27 sq m VOID)  
Unit(s): #25-53



ISOMETRIC VIEW +



SECTION A-A

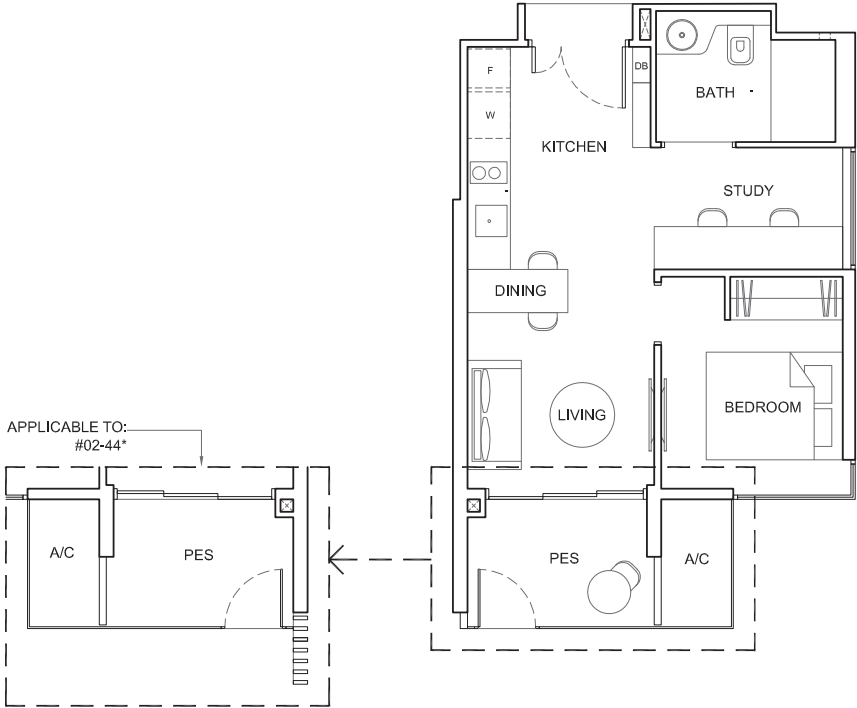


NOTE:  
+ Isometric views have excluded railing drawings

Plans are subject to change/amendments as may be required and/or approved by the Developer and/or the relevant authorities and do not form part of any offer or contract. These are not drawn to scale and are for the purpose of visual presentation only.

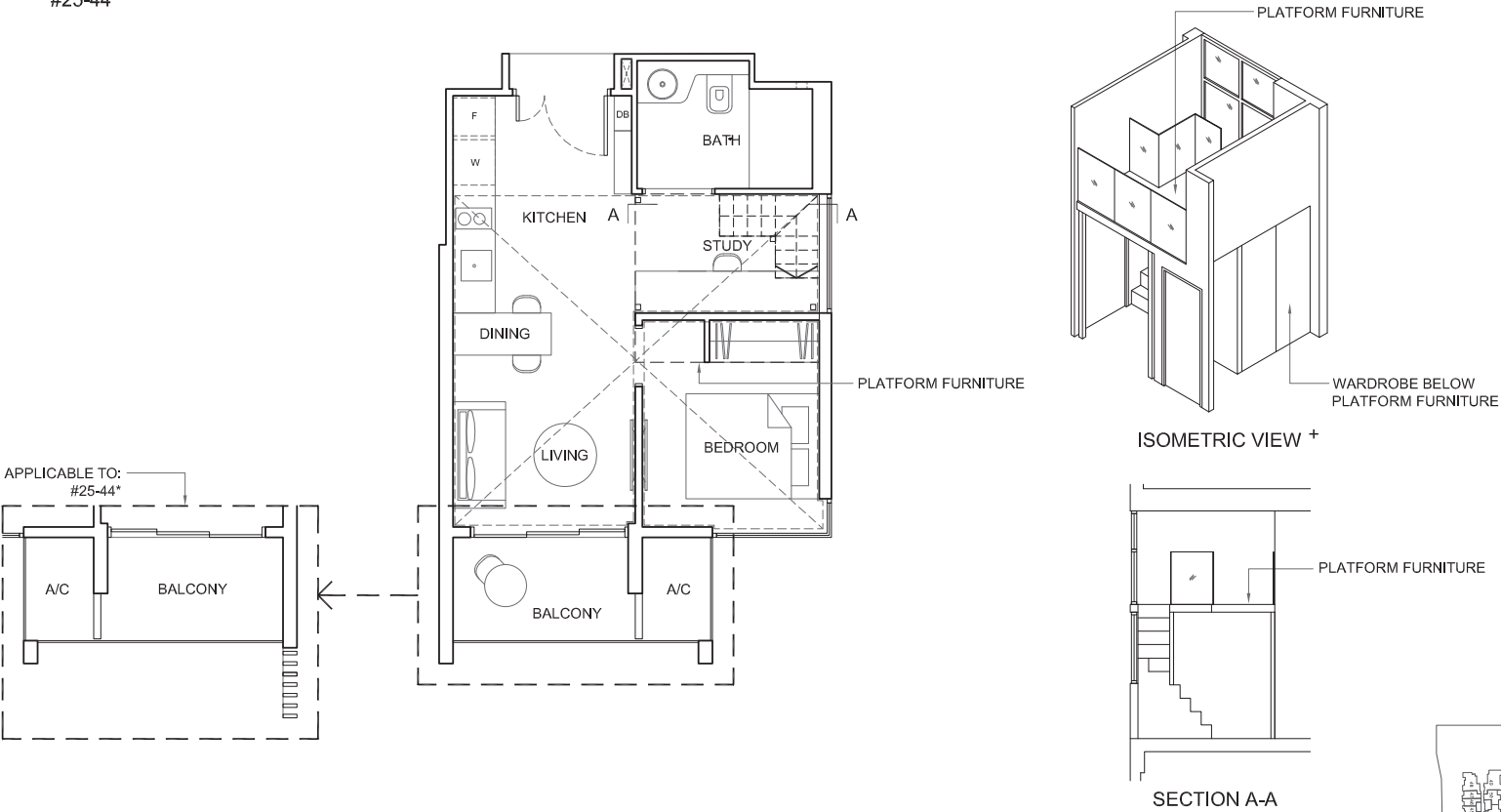
TYPE 1S1-P

Area: 43 sq m (include 2 sq m A/C LEDGE, 5 sq m PES)  
Unit(s): #02-42  
#02-44\*



TYPE 1S1-PH

Area: 69 sq m (include 2 sq m A/C LEDGE, 4 sq m BALCONY)  
(include 27 sq m VOID)  
Unit(s): #25-42  
#25-44\*

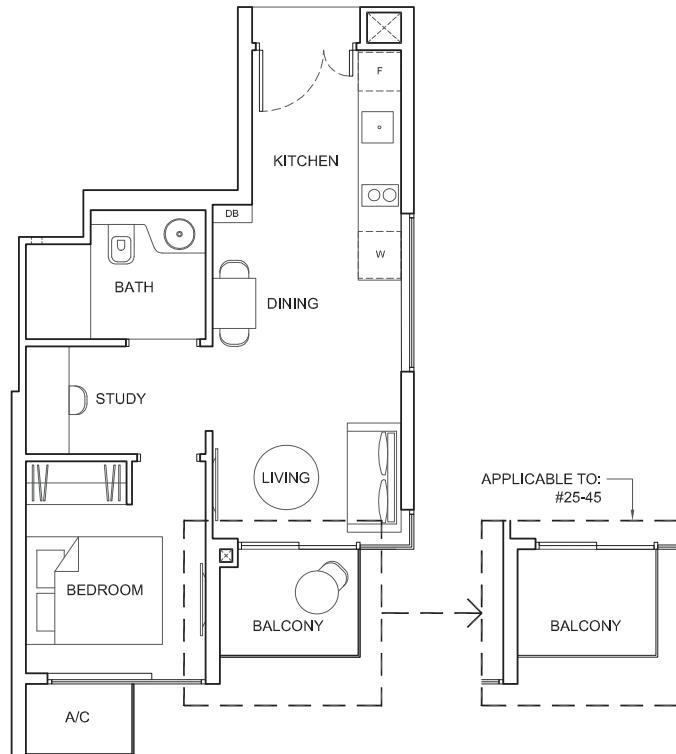


NOTE:  
\* mirror image  
+ Isometric views have excluded railing drawings

Plans are subject to change/amendments as may be required and/or approved by the Developer and/or the relevant authorities and do not form part of any offer or contract. These are not drawn to scale and are for the purpose of visual presentation only.

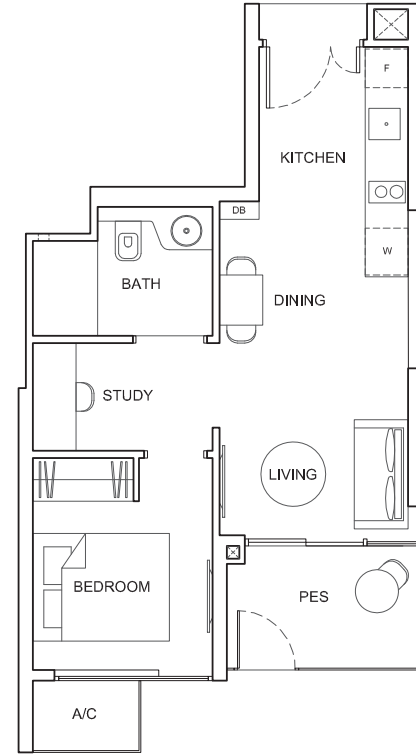
### TYPE 1S2

Area: 41 sq m (include 2 sq m A/C LEDGE, 3 sq m BALCONY)  
Unit(s): #03-45 TO #25-45



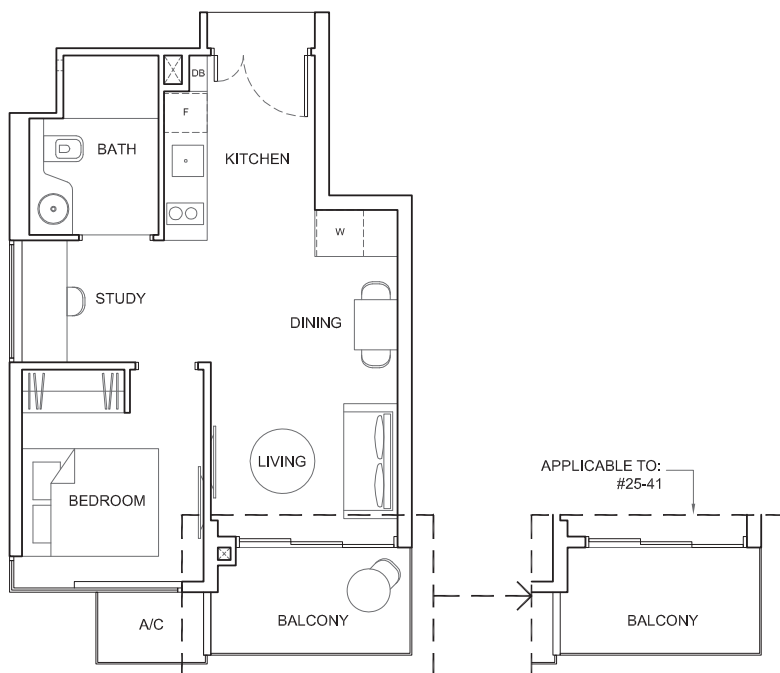
### TYPE 1S2-P

Area: 43 sq m (include 2 sq m A/C LEDGE, 5 sq m PES)  
Unit(s): #02-45



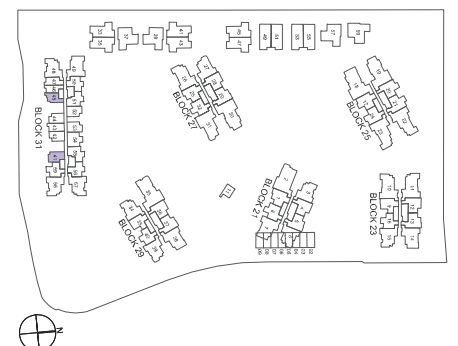
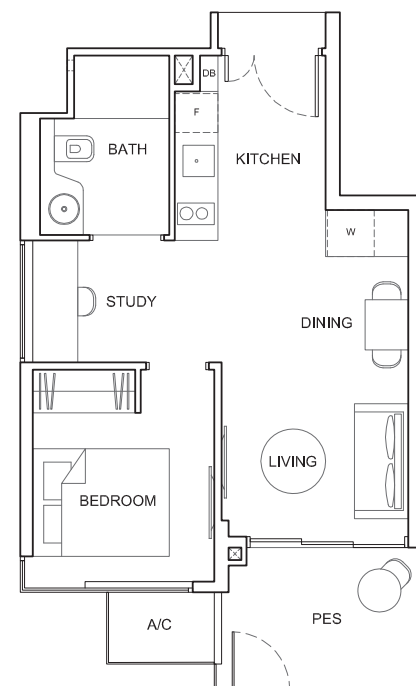
### TYPE 1S3

Area: 43 sq m (include 2 sq m A/C LEDGE, 4 sq m BALCONY)  
Unit(s): #03-41 TO #25-41



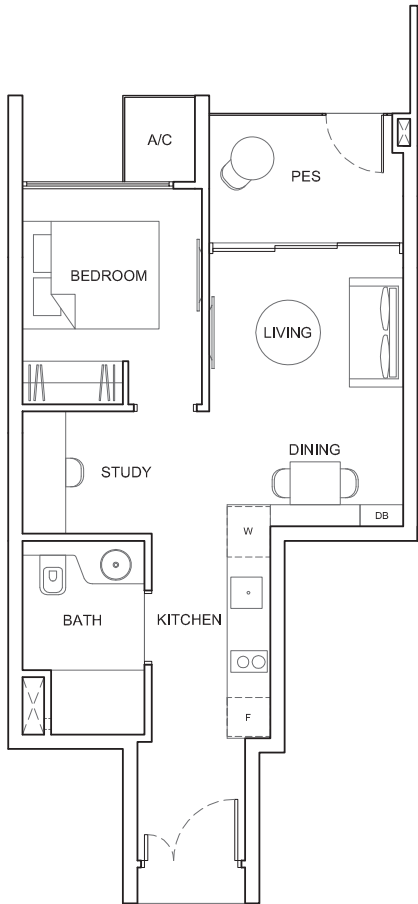
### TYPE 1S3-P

Area: 44 sq m (include 2 sq m A/C LEDGE, 5 sq m PES)  
Unit(s): #02-41



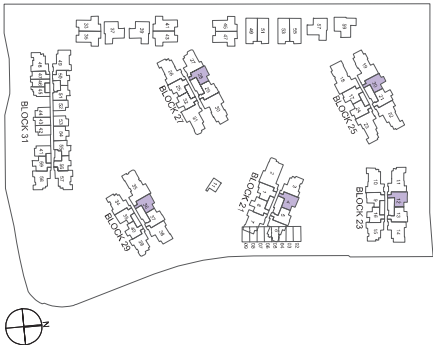
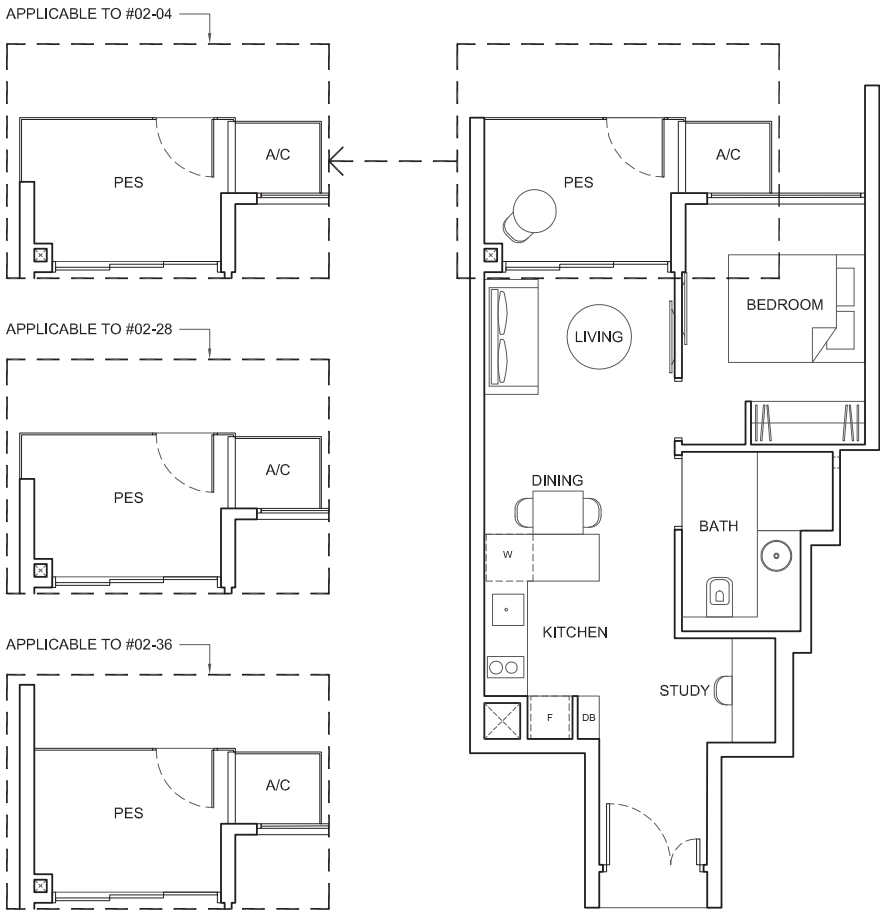
TYPE 1S4-P

Area: 45 sq m (include 1 sq m A/C LEDGE, 5 sq m PES)  
Unit(s): #02-20



TYPE 1S5-P

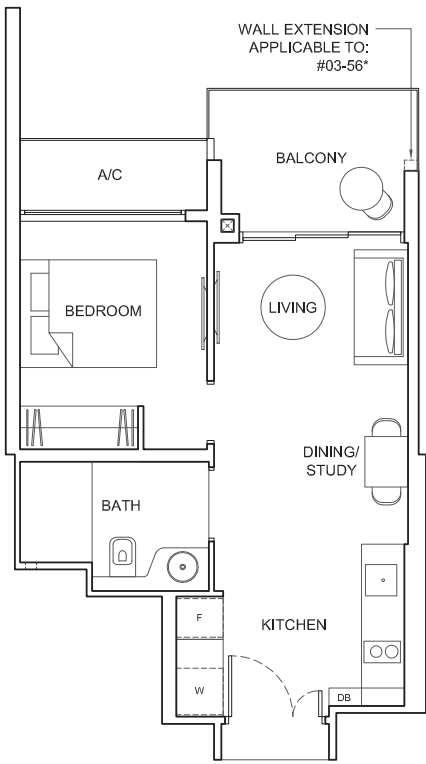
Area: 46 sq m (include 1 sq m A/C LEDGE, 6 sq m PES)  
Unit(s): #02-04  
#02-12  
#02-28  
#02-36



Plans are subject to change/amendments as may be required and/or approved by the Developer and/or the relevant authorities and do not form part of any offer or contract. These are not drawn to scale and are for the purpose of visual presentation only.

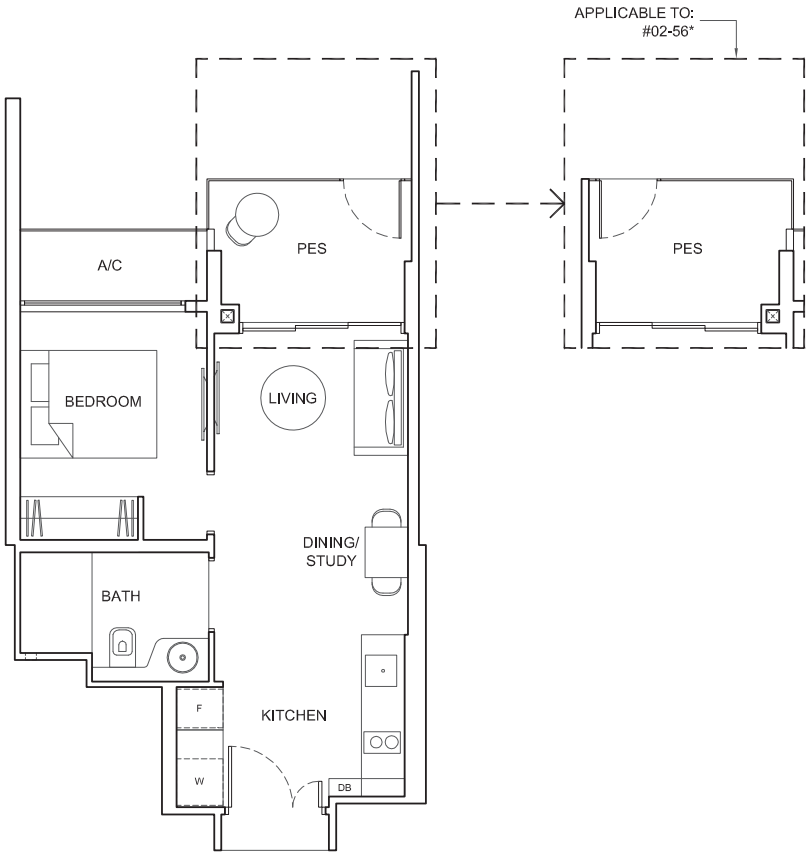
TYPE 1S6

Area: 44 sq m (include 3 sq m A/C LEDGE, 6 sq m BALCONY)  
Unit(s): #03-50  
#03-56\*



TYPE 1S6-P

Area: 44 sq m (include 3 sq m A/C LEDGE, 6 sq m PES)  
Unit(s): #02-50  
#02-56\*



NOTE:

\* mirror image

Plans are subject to change/amendments as may be required and/or approved by the Developer and/or the relevant authorities and do not form part of any offer or contract. These are not drawn to scale and are for the purpose of visual presentation only.

