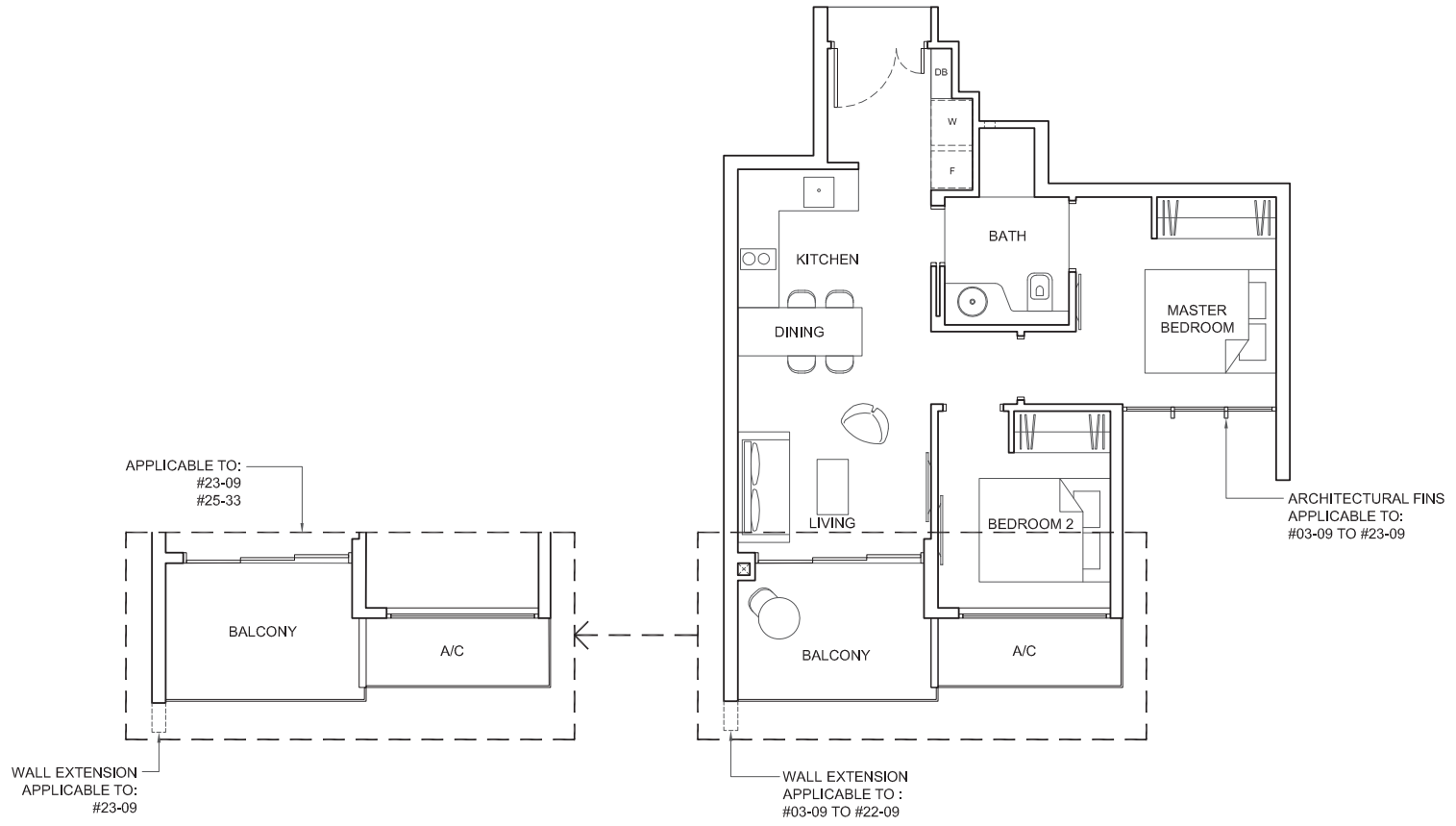


TYPE 2C1

Area: 55 sq m (include 3 sq m A/C LEDGE, 6 sq m BALCONY)

Unit(s): #03-09 TO #23-09

#03-33 TO #25-33

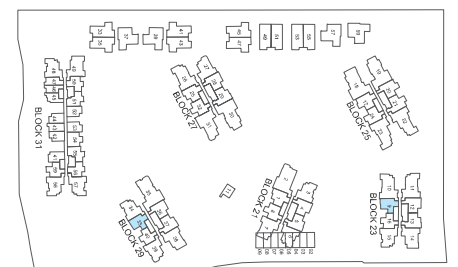
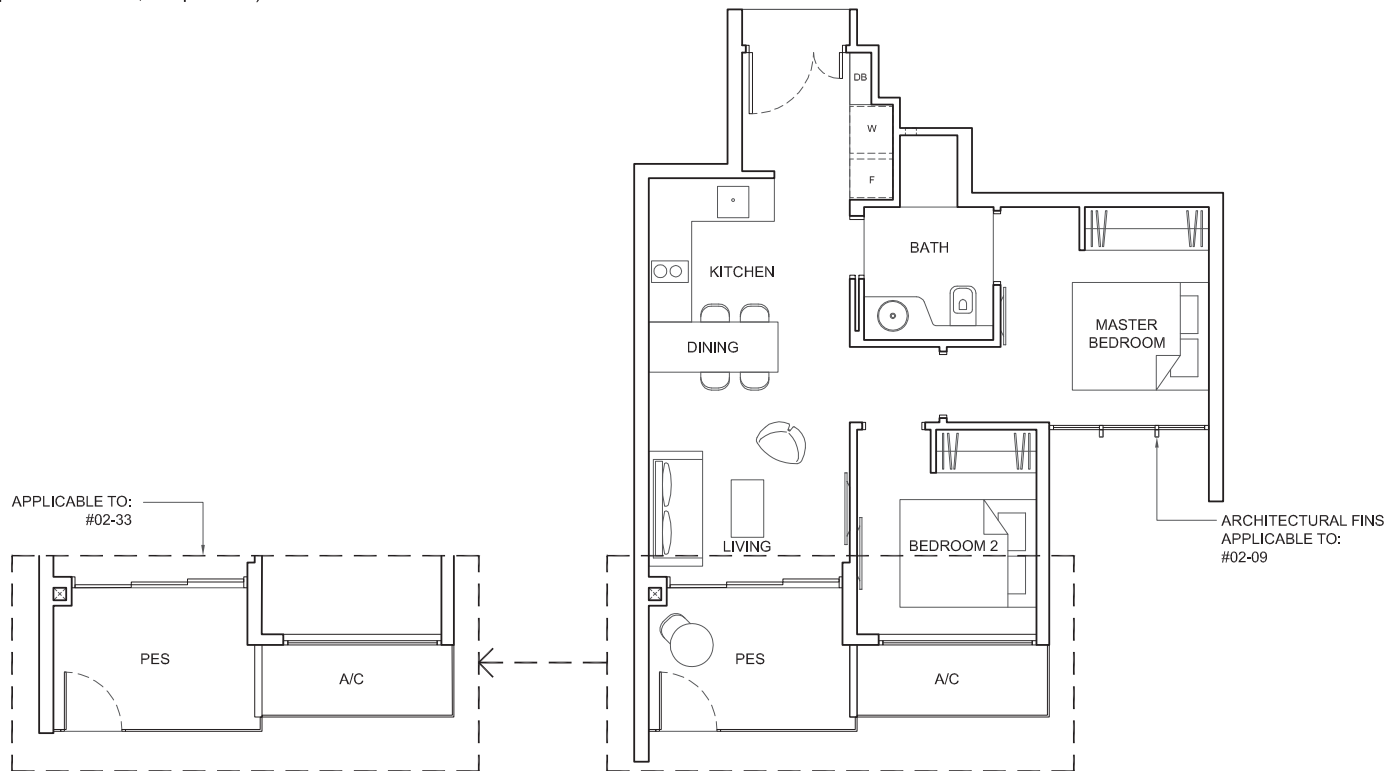


TYPE 2C1-P

Area: 55 sq m (include 3 sq m A/C LEDGE, 6 sq m PES)

Unit(s): #02-09

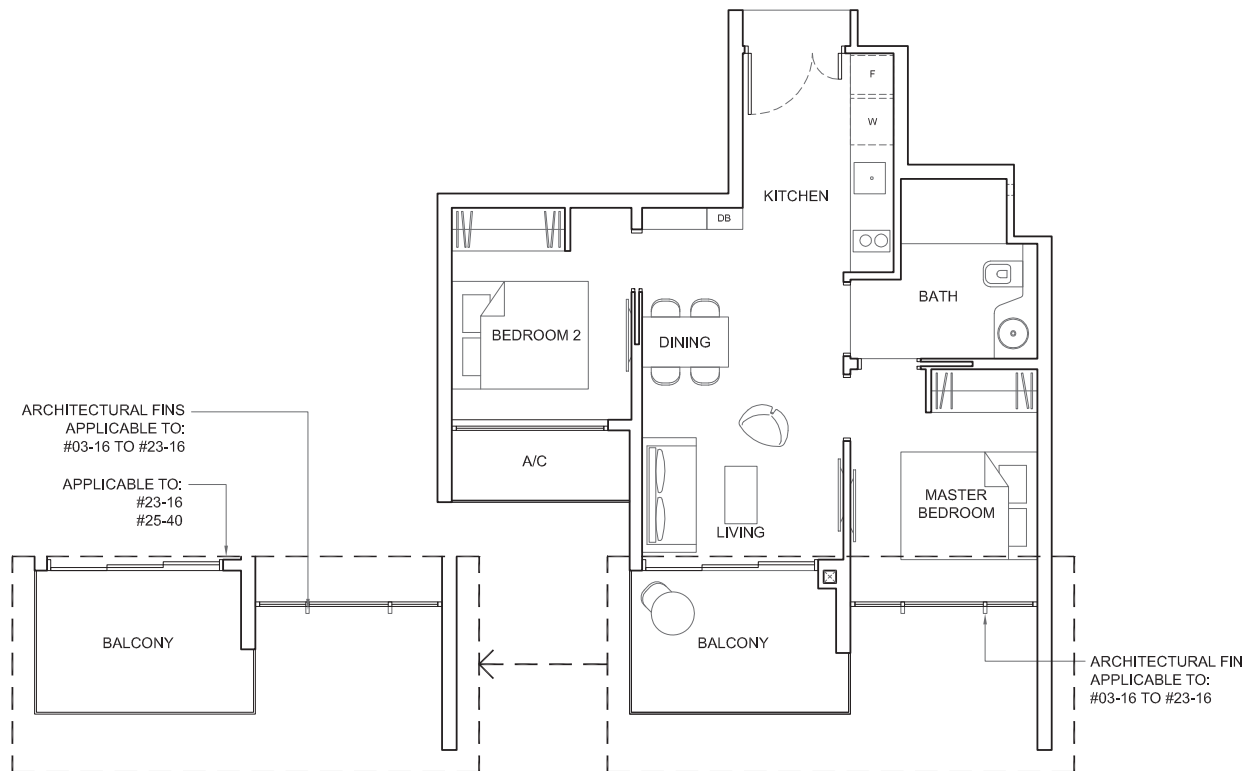
#02-33



TYPE 2C2

Area: 54 sq m (include 3 sq m A/C LEDGE, 6 sq m BALCONY)

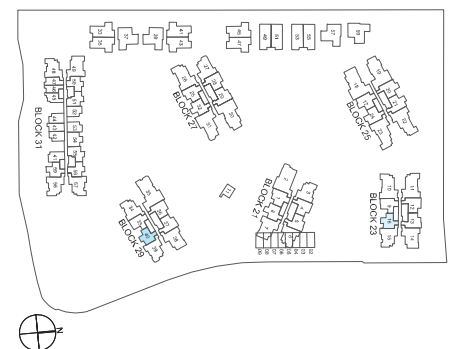
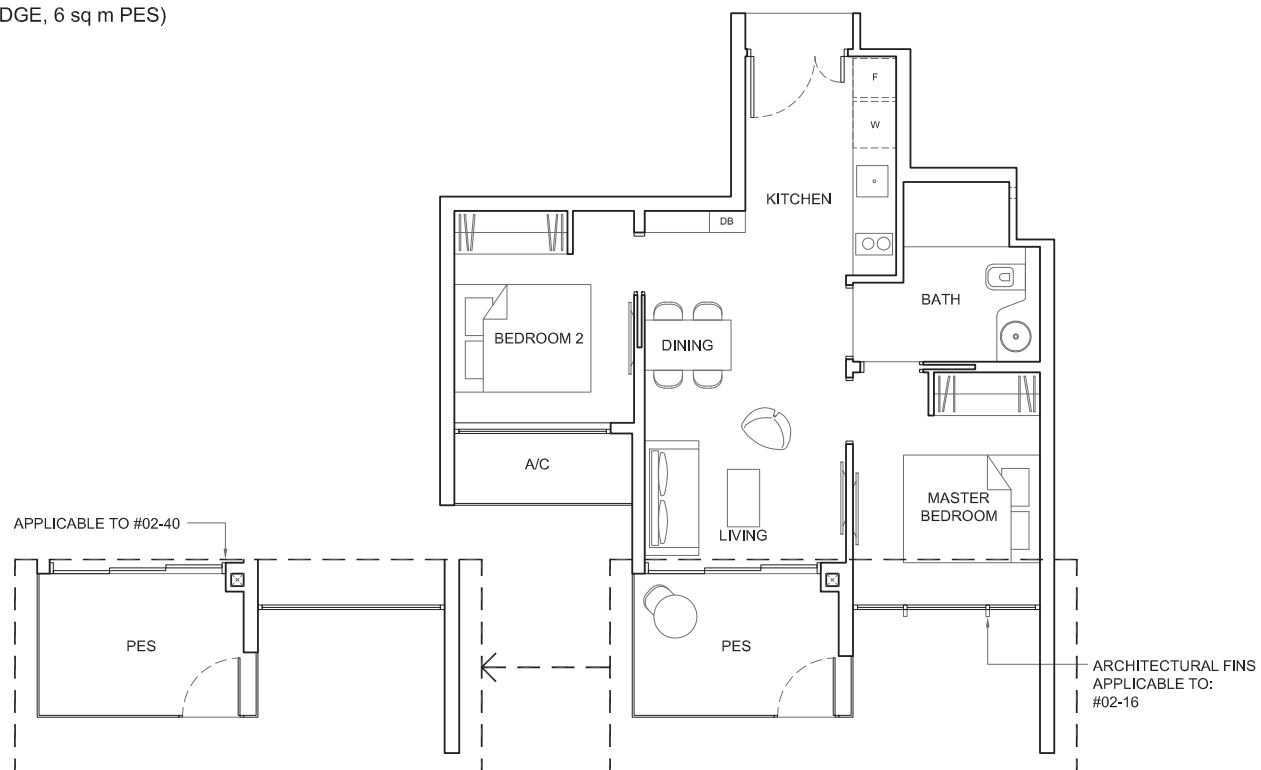
Unit(s): #03-16 TO #23-16
#03-40 TO #25-40



TYPE 2C2-P

Area: 54 sq m (include 3 sq m A/C LEDGE, 6 sq m PES)

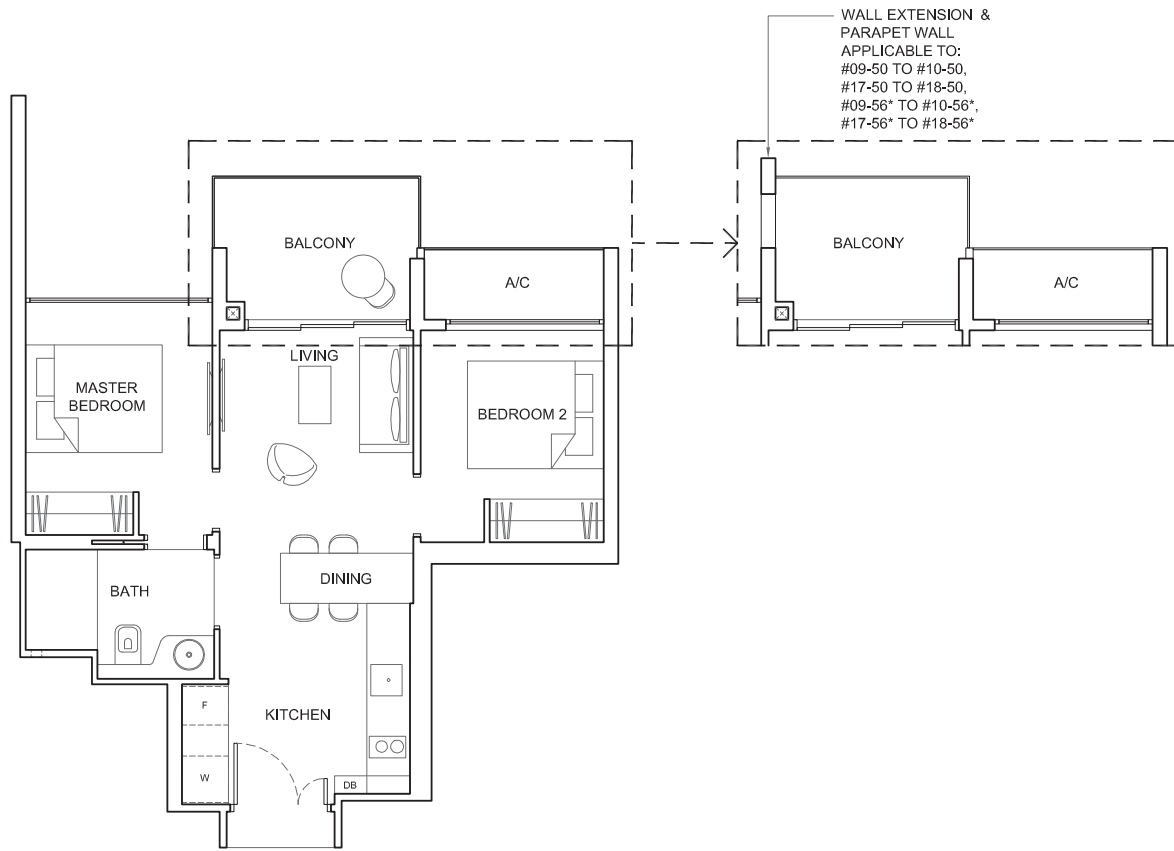
Unit(s): #02-16
#02-40



TYPE 2C3

Area: 53 sq m (include 3 sq m A/C LEDGE, 6 sq m BALCONY)

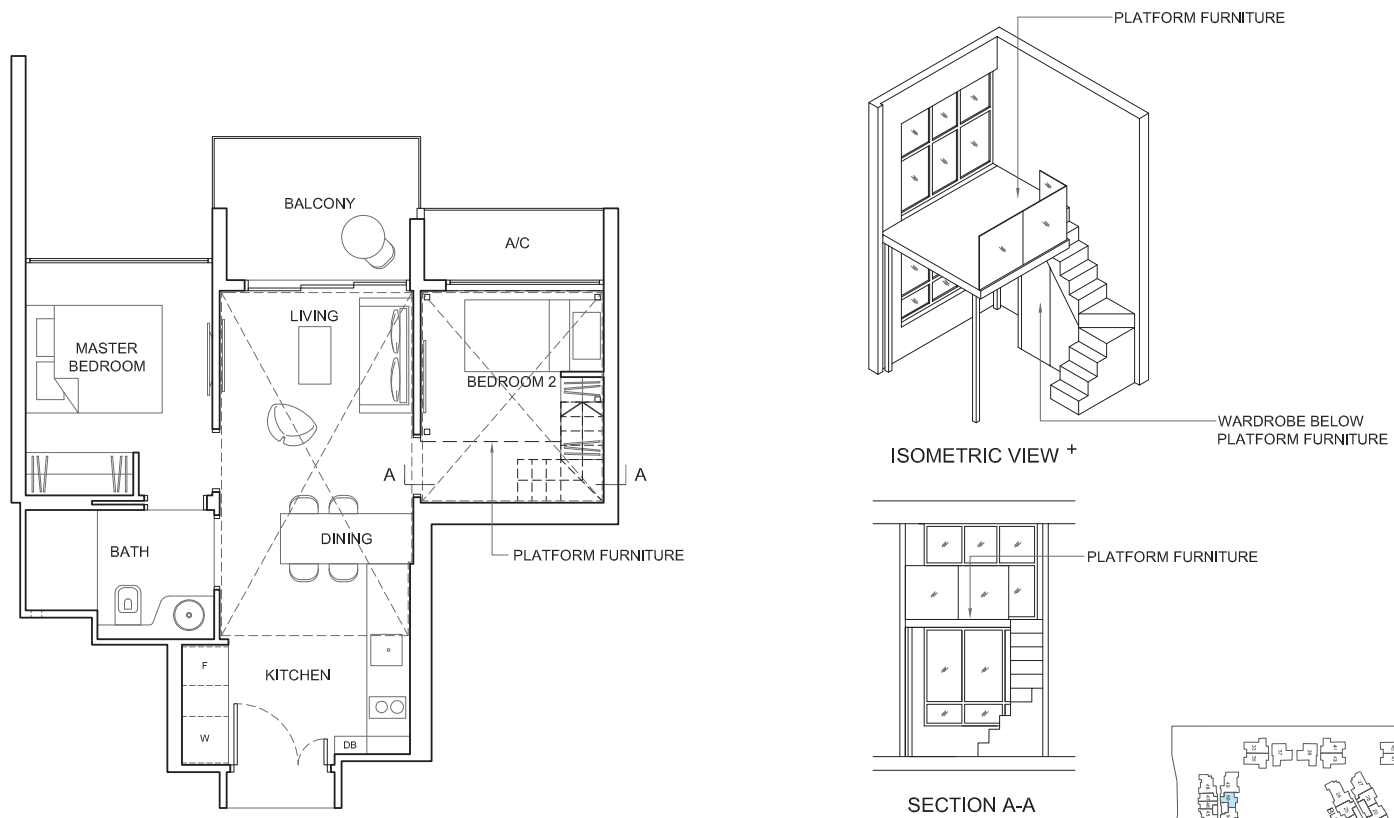
Unit(s): #04-50 TO #24-50
#04-56* TO #24-56*



TYPE 2C3-PH

Area: 76 sq m (include 3 sq m A/C LEDGE, 6 sq m BALCONY)
(include 23 sq m VOID)

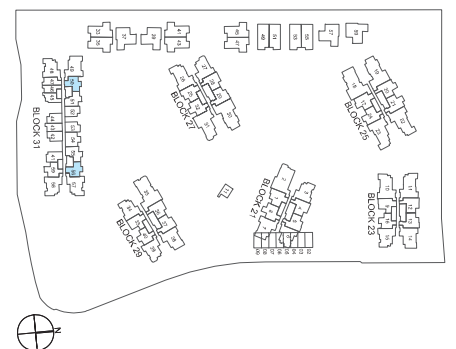
Unit(s): #25-50
#25-56*



NOTE:

- * mirror image
- + Isometric views have excluded railing drawings

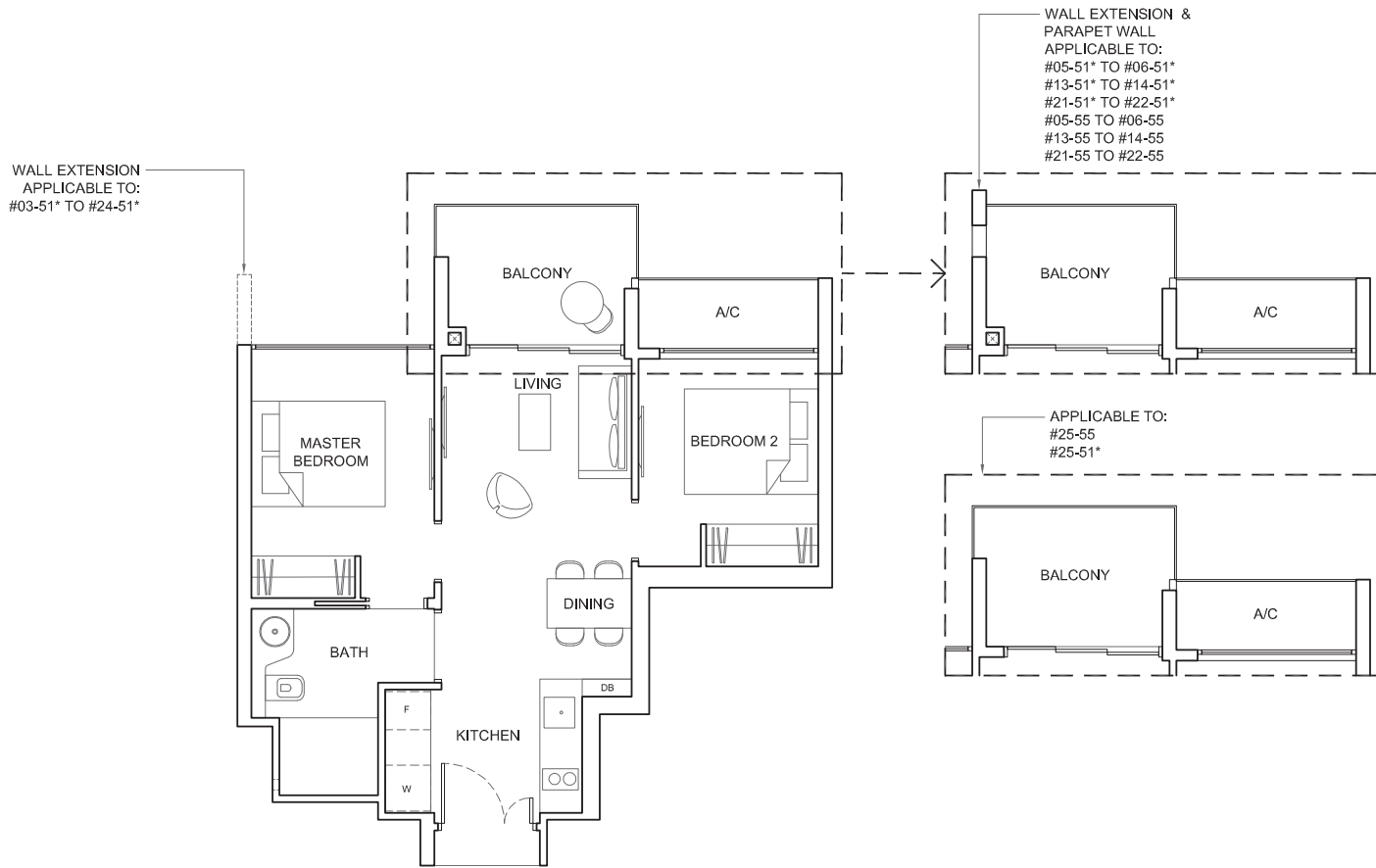
Plans are subject to change/amendments as may be required and/or approved by the Developer and/or the relevant authorities and do not form part of any offer or contract. These are not drawn to scale and are for the purpose of visual presentation only.



TYPE 2C4

Area: 54 sq m (include 3 sq m A/C LEDGE, 6 sq m BALCONY)

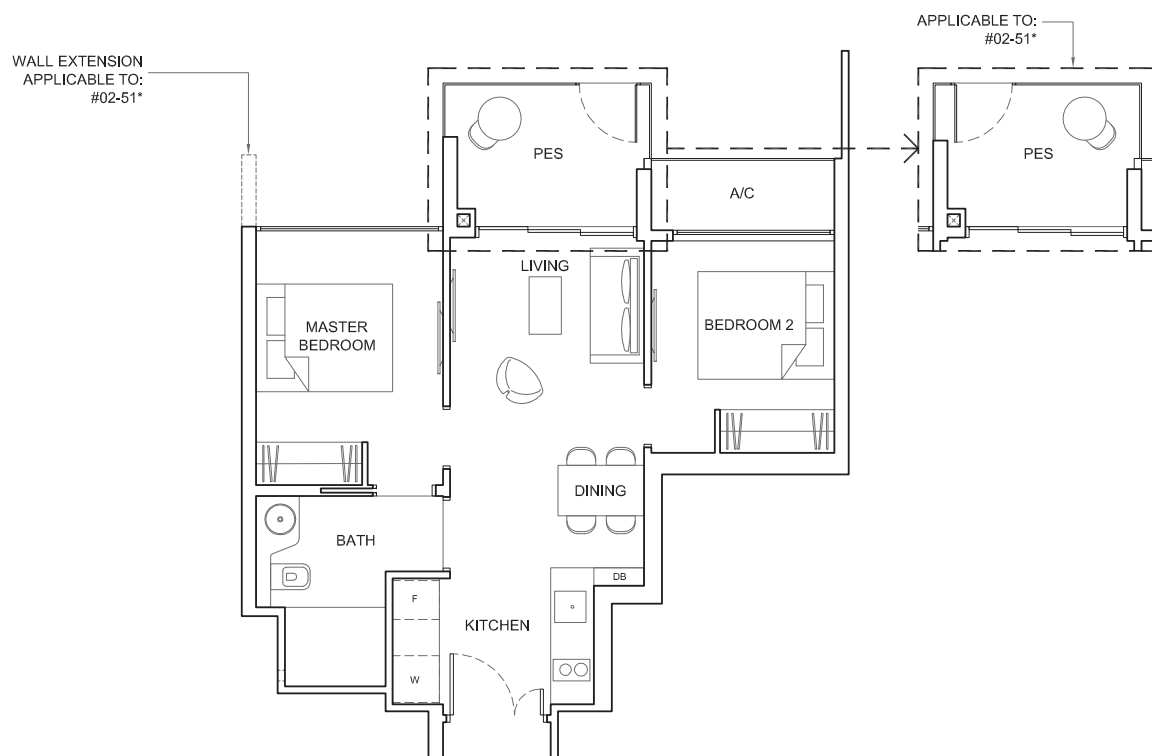
Unit(s): #03-51* TO #25-51*
#03-55 TO #25-55



TYPE 2C4-P

Area: 54 sq m (include 3 sq m A/C LEDGE, 6 sq m PES)

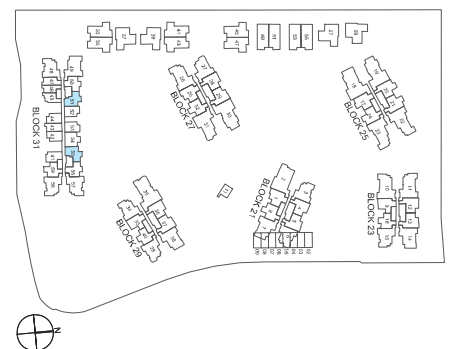
Unit(s): #02-51*
#02-55



NOTE:

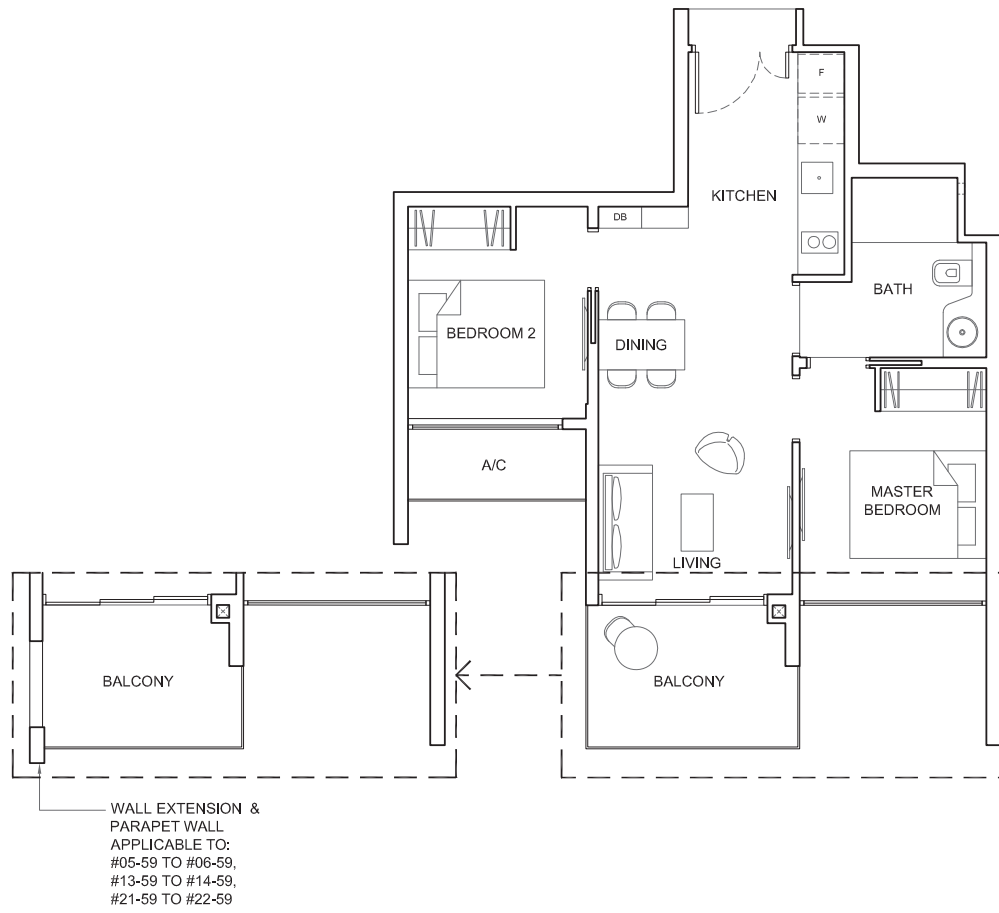
* mirror image

Plans are subject to change/amendments as may be required and/or approved by the Developer and/or the relevant authorities and do not form part of any offer or contract. These are not drawn to scale and are for the purpose of visual presentation only.



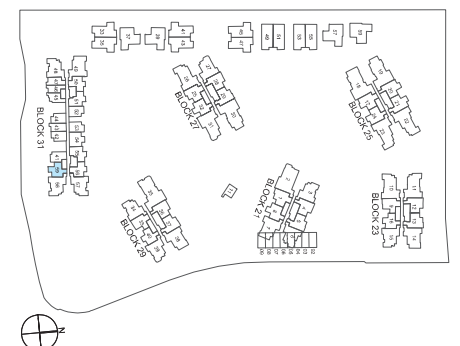
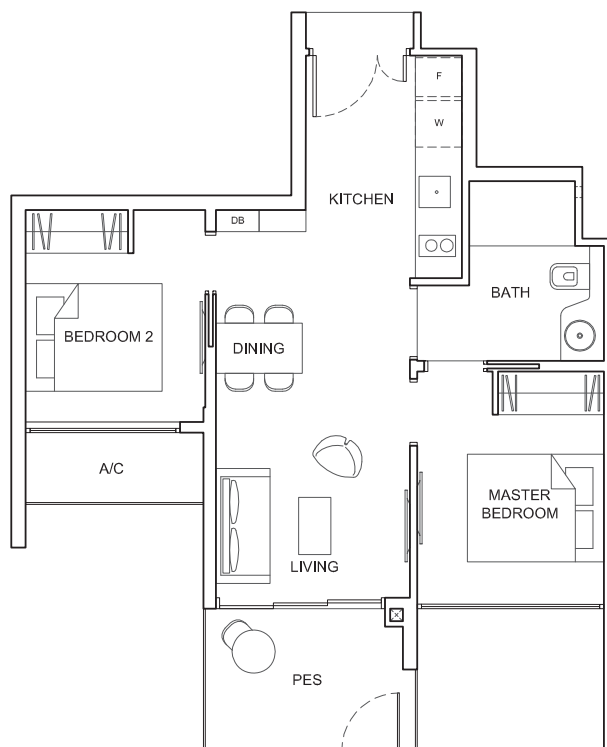
TYPE 2C5

Area: 55 sq m (include 3 sq m A/C LEDGE, 6 sq m BALCONY)
 Unit(s): #03-59 TO #24-59



TYPE 2C5-P

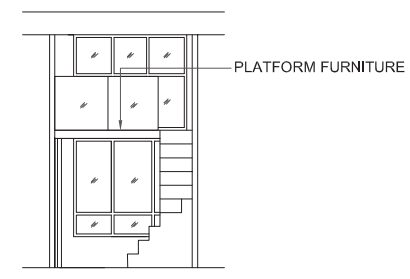
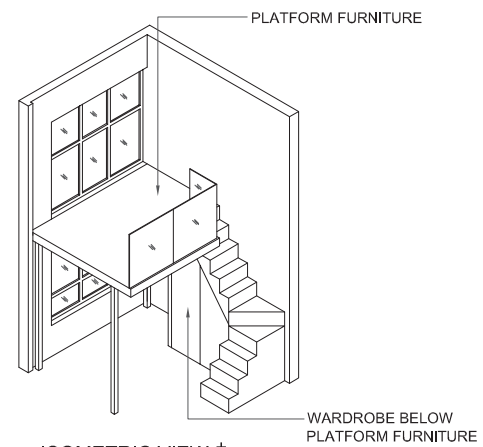
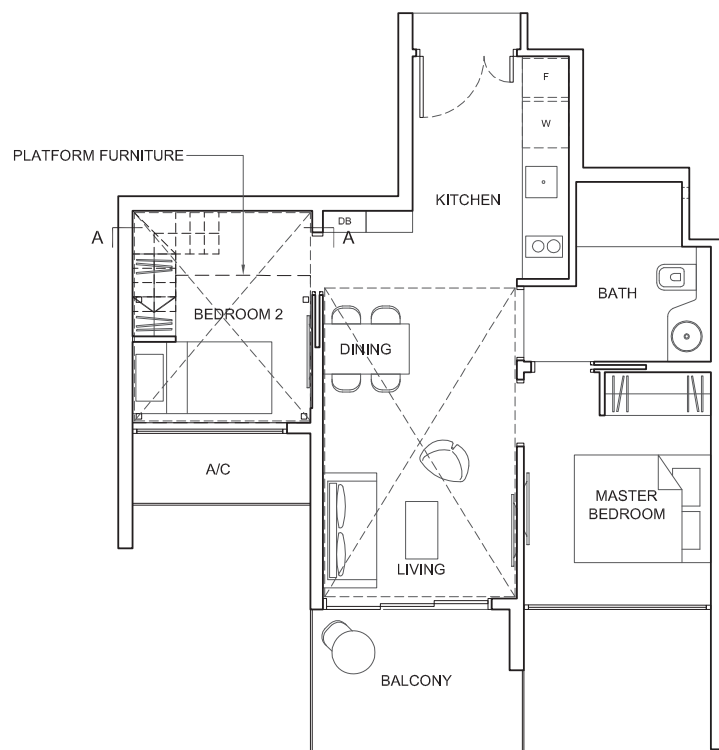
Area: 55 sq m (include 3 sq m A/C LEDGE, 6 sq m PES)
 Unit(s): #02-59



TYPE 2C5-PH

Area: 76 sq m (include 3 sq m A/C LEDGE, 6 sq m BALCONY)
(include 21 sq m VOID)

Unit(s): #25-59



TYPE 2D1

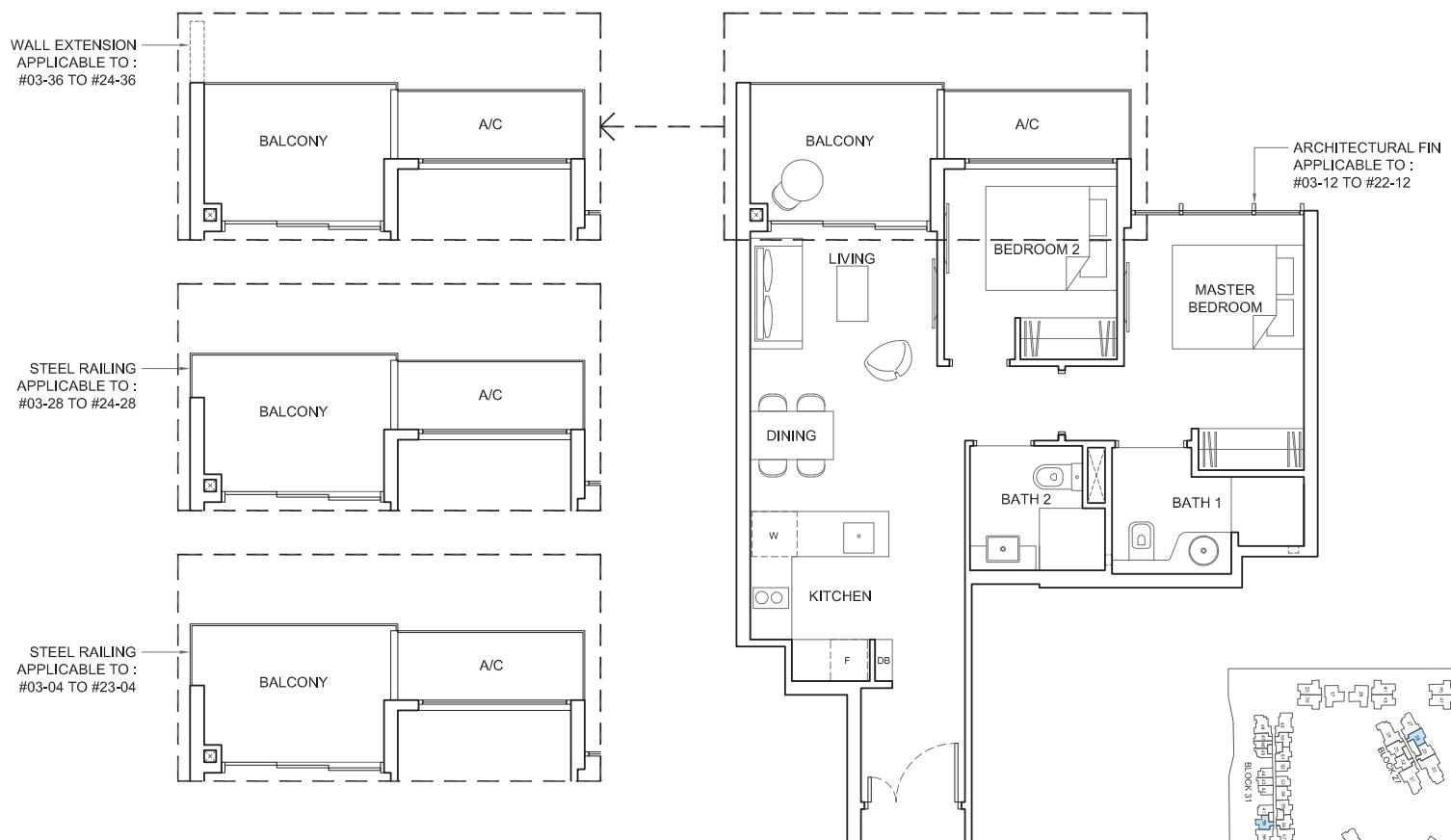
Area: 62 sq m (include 3 sq m A/C LEDGE, 6 sq m BALCONY)

Unit(s): #03-04 TO #23-04

#03-12 TO #22-12

#03-28 TO #24-28

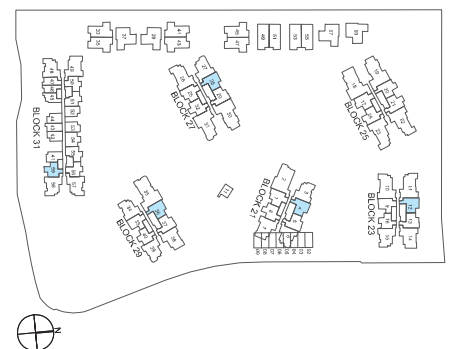
#03-36 TO #24-36



NOTE:

+ Isometric views have excluded railing drawings

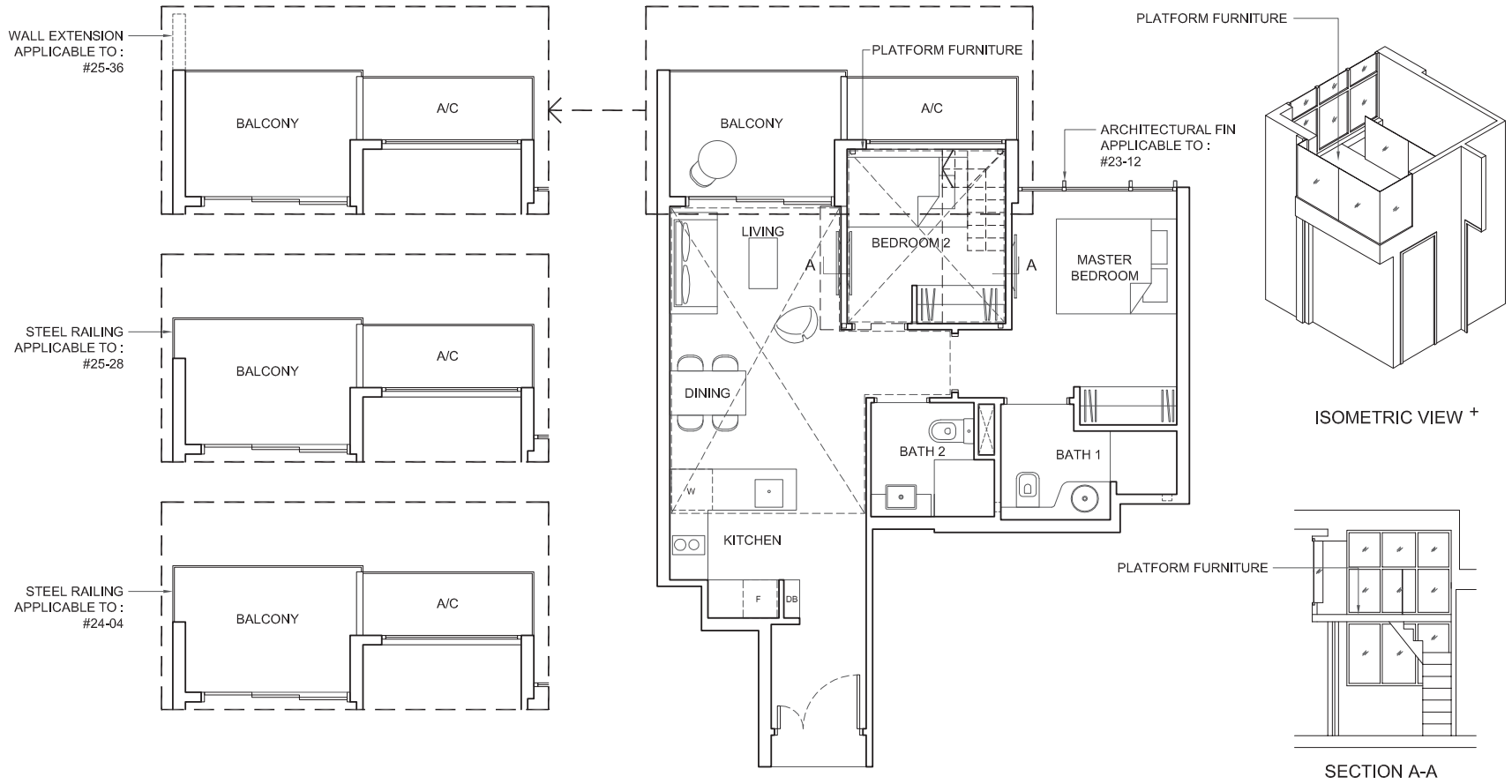
Plans are subject to change/amendments as may be required and/or approved by the Developer and/or the relevant authorities and do not form part of any offer or contract. These are not drawn to scale and are for the purpose of visual presentation only.



TYPE 2D1-PH

Area: 87 sq m (include 3 sq m A/C LEDGE, 6 sq m BALCONY)
(include 25 sq m VOID)

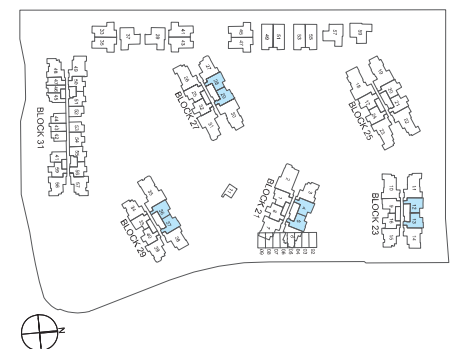
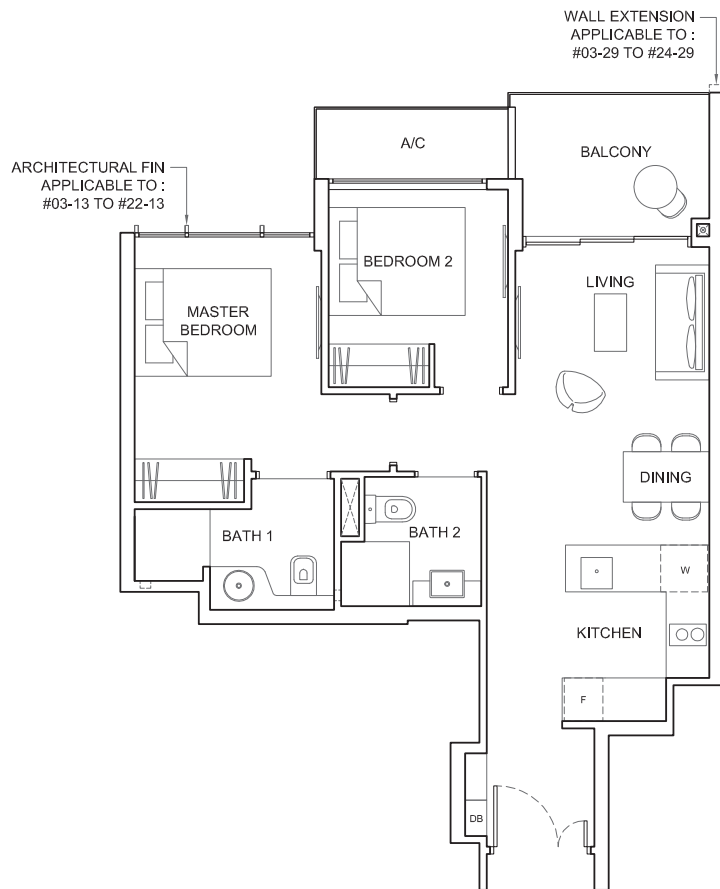
Unit(s): #24-04
#23-12
#25-28
#25-36



TYPE 2D2

Area: 63 sq m (include 3 sq m A/C LEDGE, 6 sq m BALCONY)

Unit(s): #03-05 TO #23-05
#03-13 TO #22-13
#03-29 TO #24-29
#03-37 TO #24-37



NOTE:

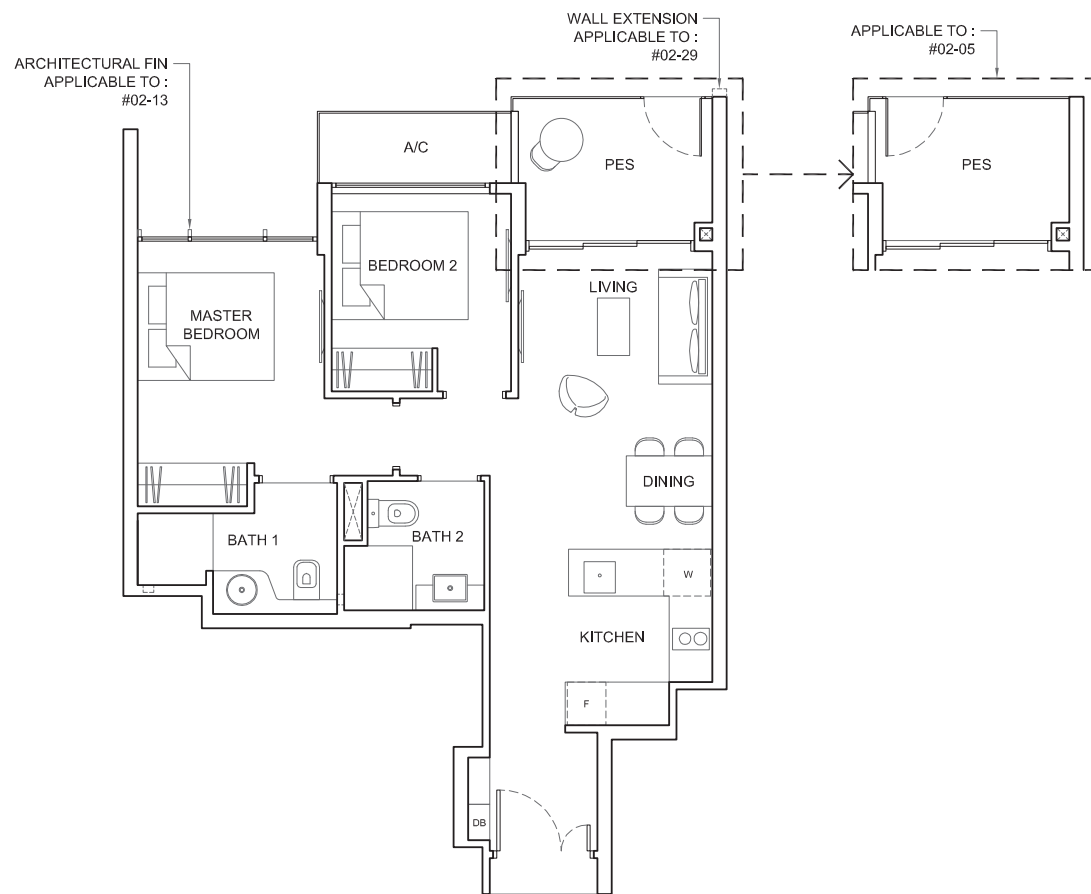
+ Isometric views have excluded railing drawings

Plans are subject to change/amendments as may be required and/or approved by the Developer and/or the relevant authorities and do not form part of any offer or contract. These are not drawn to scale and are for the purpose of visual presentation only.

TYPE 2D2-P

Area: 63 sq m (include 3 sq m A/C LEDGE, 6 sq m PES)

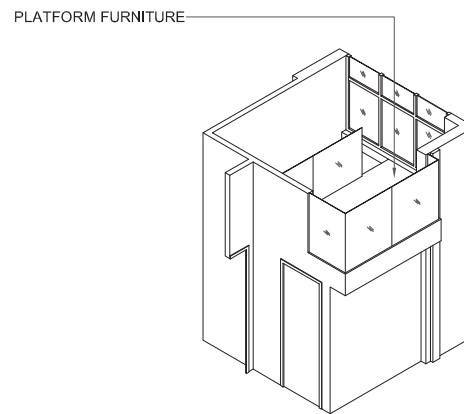
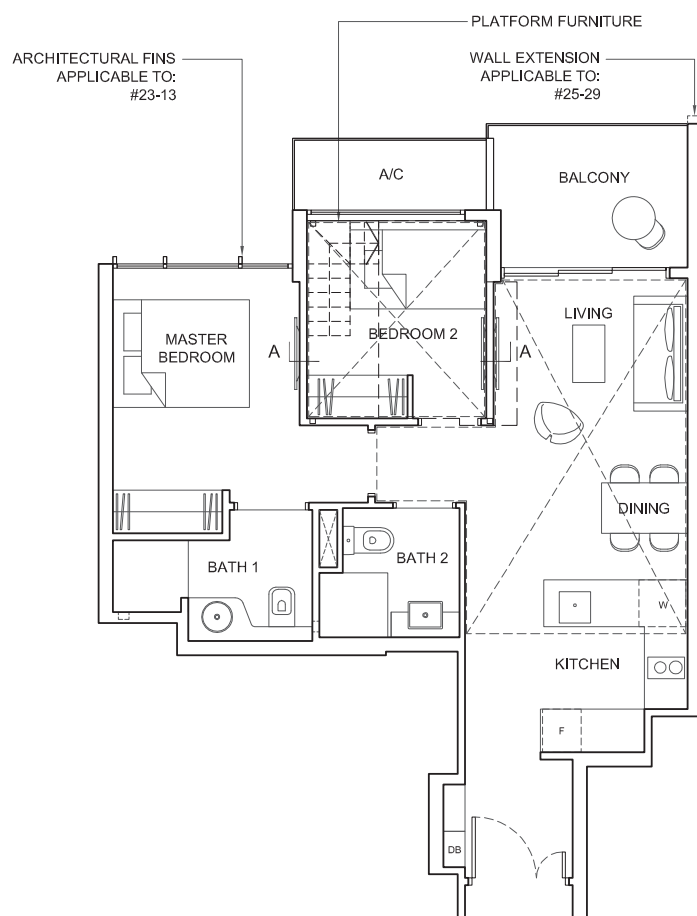
Unit(s): #02-05
#02-13
#02-29
#02-37



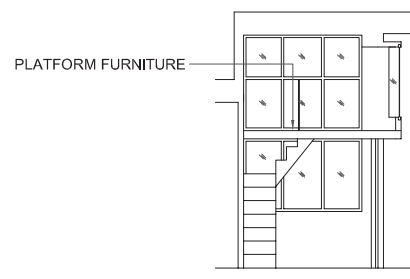
TYPE 2D2-PH

Area: 88 sq m (include 3 sq m A/C LEDGE, 6 sq m BALCONY)
(include 25 sq m VOID)

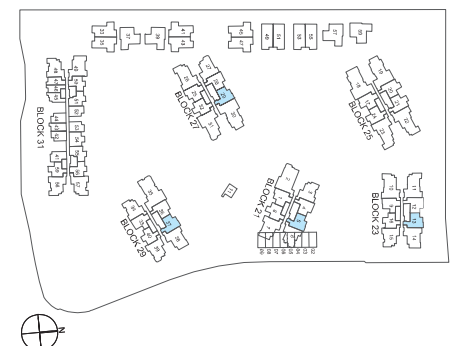
Unit(s): #24-05
#23-13
#25-29
#25-37



ISOMETRIC VIEW +



SECTION A-A



NOTE:

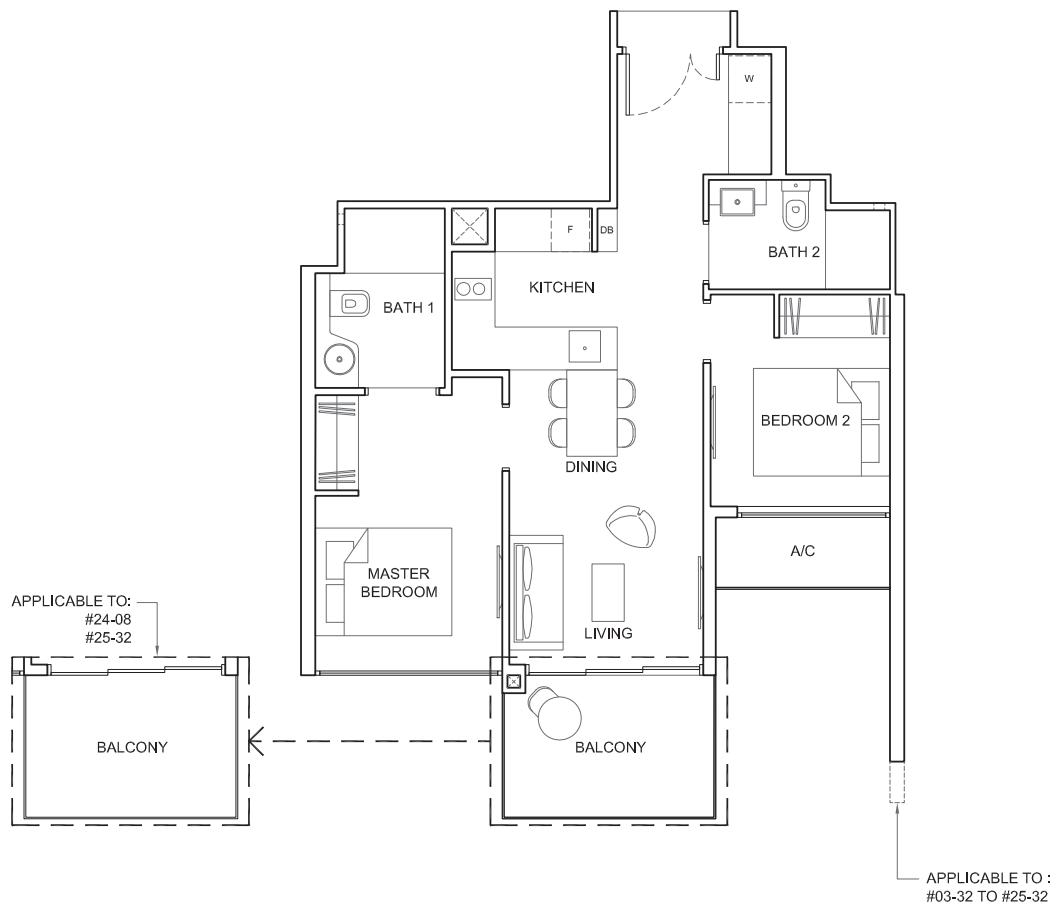
+ Isometric views have excluded railing drawings

Plans are subject to change/amendments as may be required and/or approved by the Developer and/or the relevant authorities and do not form part of any offer or contract. These are not drawn to scale and are for the purpose of visual presentation only.

TYPE 2D3

Area: 62 sq m (include 3 sq m A/C LEDGE, 6 sq m BALCONY)

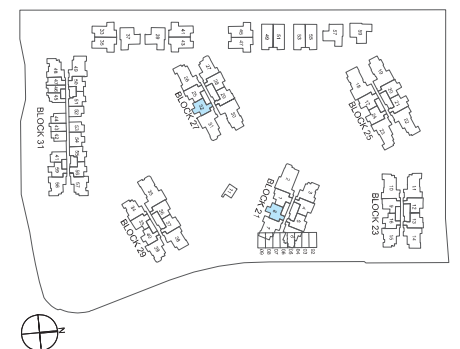
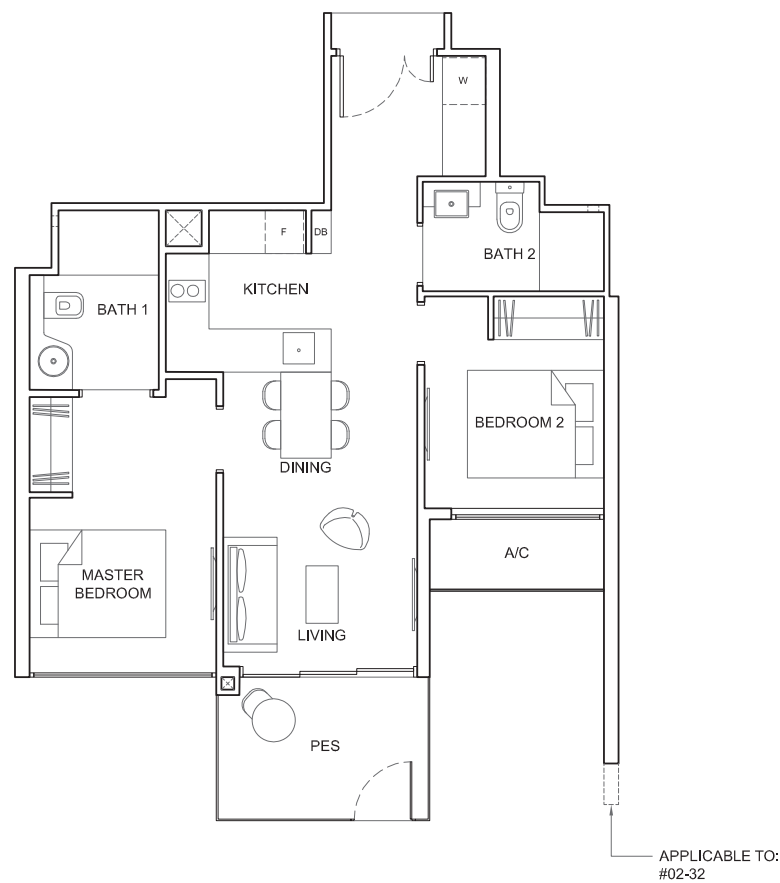
Unit(s): #03-08 TO #24-08
#03-32 TO #25-32



TYPE 2D3-P

Area: 62 sq m (include 3 sq m A/C LEDGE, 6 sq m PES)

Unit(s): #02-08
#02-32

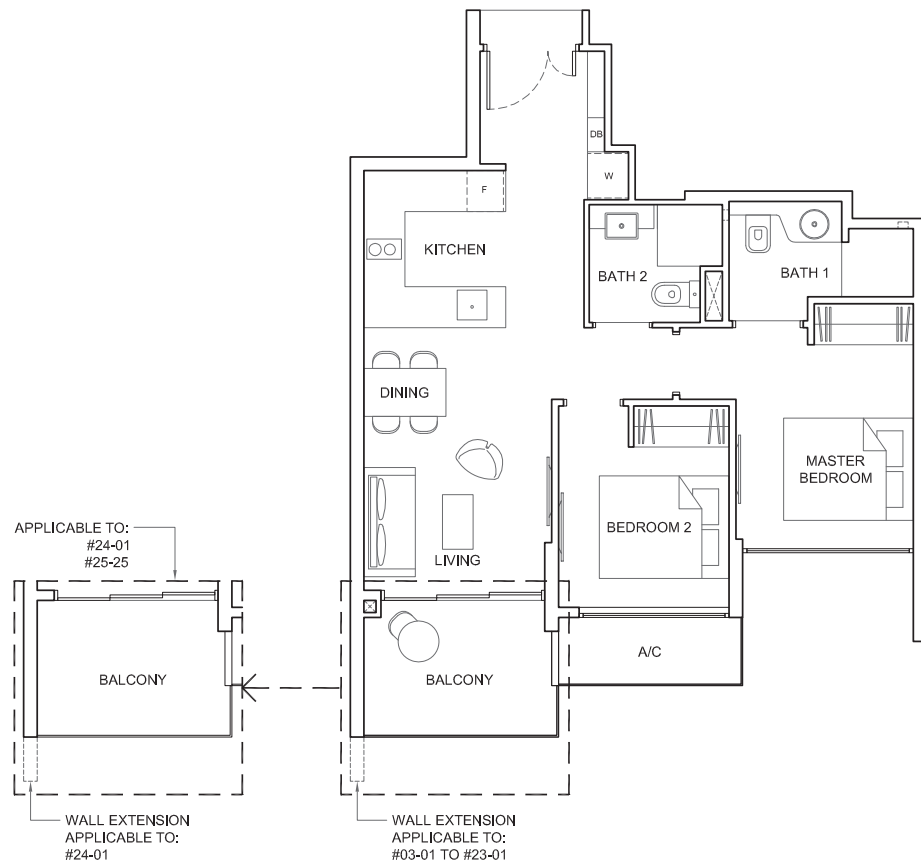


Plans are subject to change/amendments as may be required and/or approved by the Developer and/or the relevant authorities and do not form part of any offer or contract. These are not drawn to scale and are for the purpose of visual presentation only.

TYPE 2D4

Area: 62 sq m (include 3 sq m A/C LEDGE, 6 sq m BALCONY)

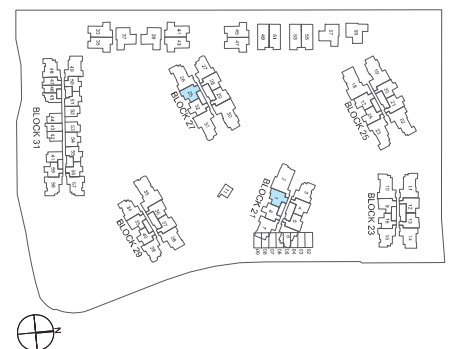
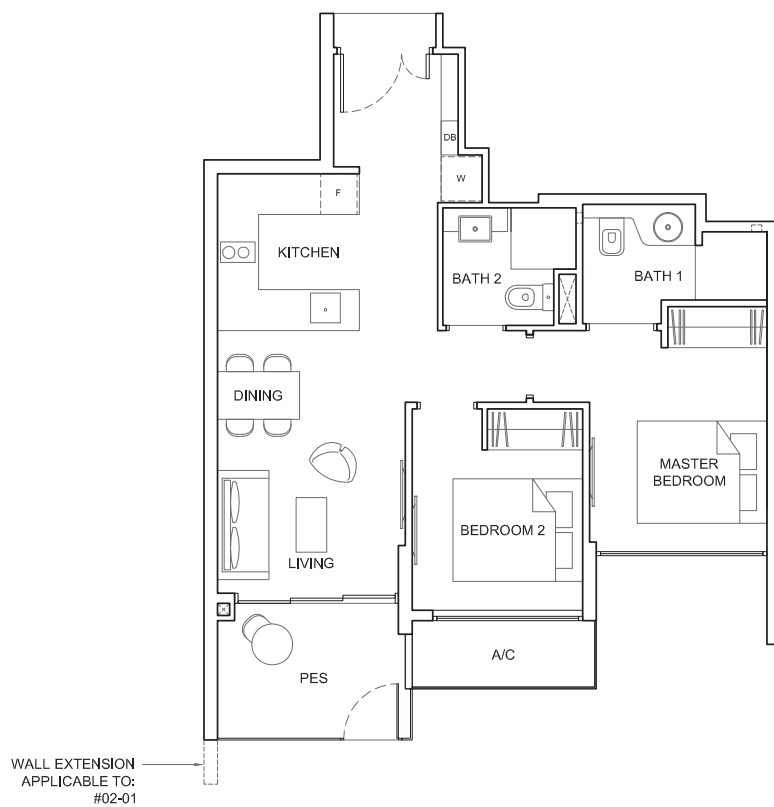
Unit(s): #03-01 TO #24-01
#03-25 TO #25-25



TYPE 2D4-P

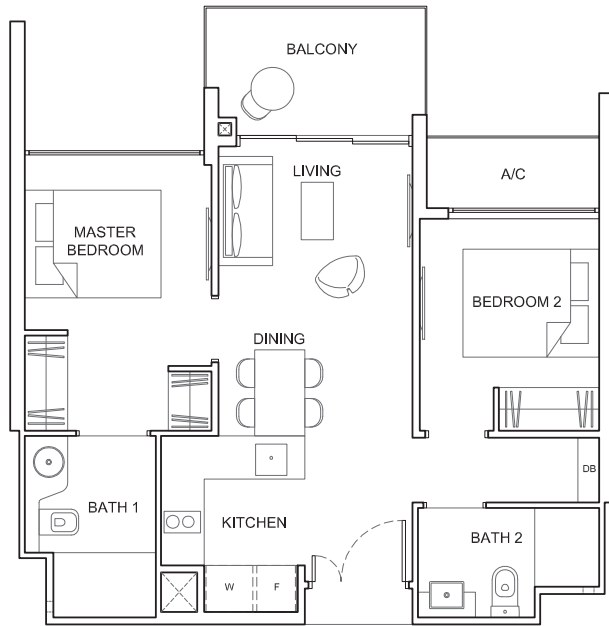
Area: 62 sq m (include 3 sq m A/C LEDGE, 6 sq m PES)

Unit(s): #02-01
#02-25



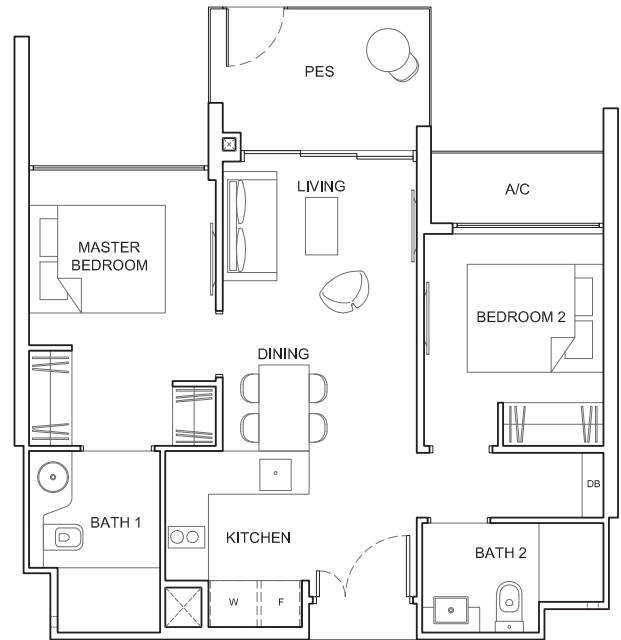
TYPE 2D5

Area: 59 sq m (include 3 sq m A/C LEDGE, 6 sq m BALCONY)
Unit(s): #03-54 TO #24-54



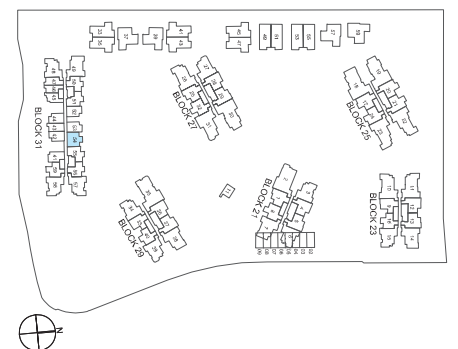
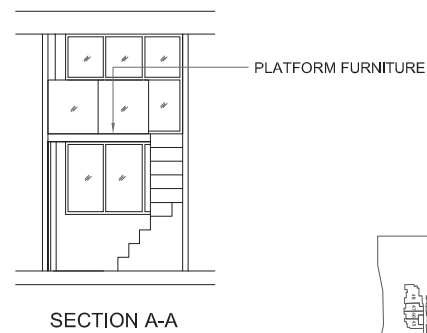
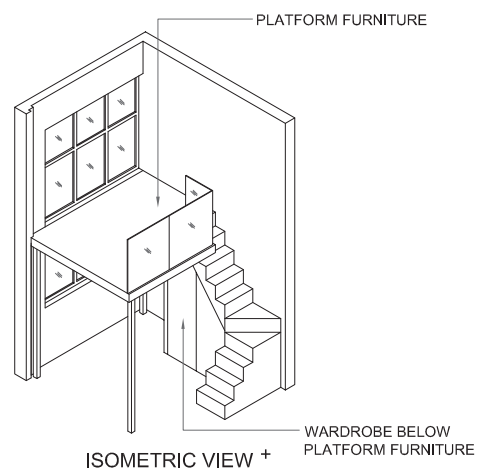
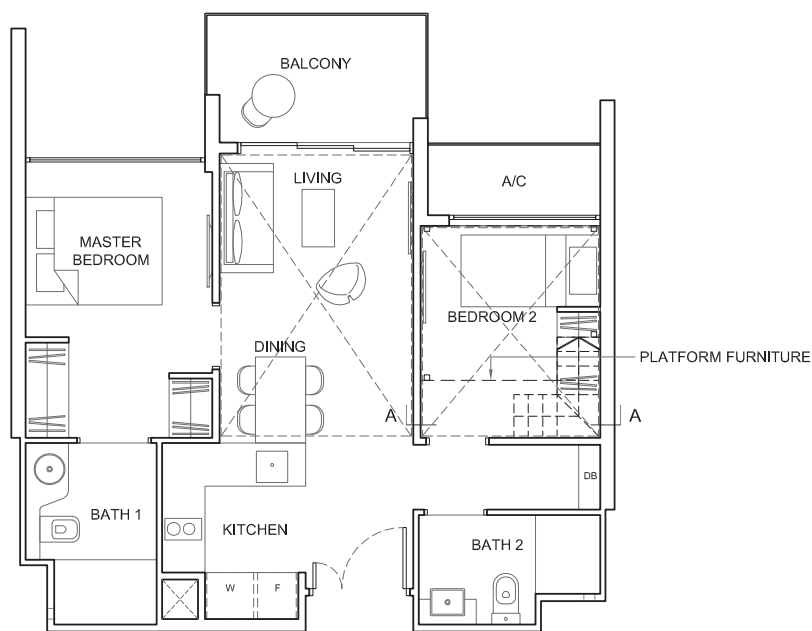
TYPE 2D5-P

Area: 59 sq m (include 3 sq m A/C LEDGE, 6 sq m PES)
Unit(s): #02-54



TYPE 2D5-PH

Area: 79 sq m (include 3 sq m A/C LEDGE, 6 sq m BALCONY)
(include 20 sq m VOID)
Unit(s): #25-54



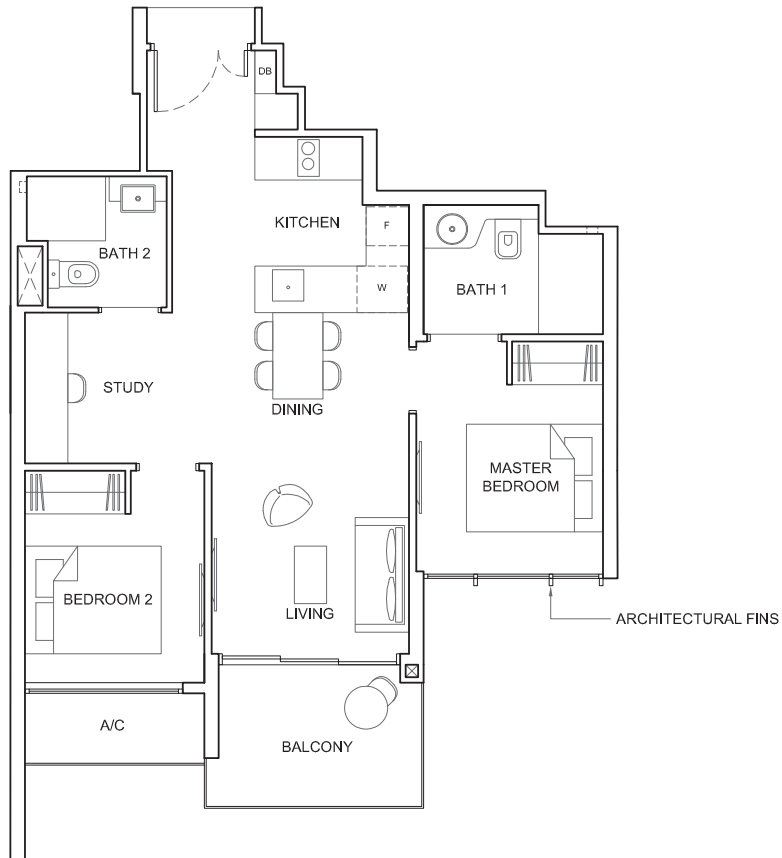
NOTE:

+ Isometric views have excluded railing drawings

Plans are subject to change/amendments as may be required and/or approved by the Developer and/or the relevant authorities and do not form part of any offer or contract. These are not drawn to scale and are for the purpose of visual presentation only.

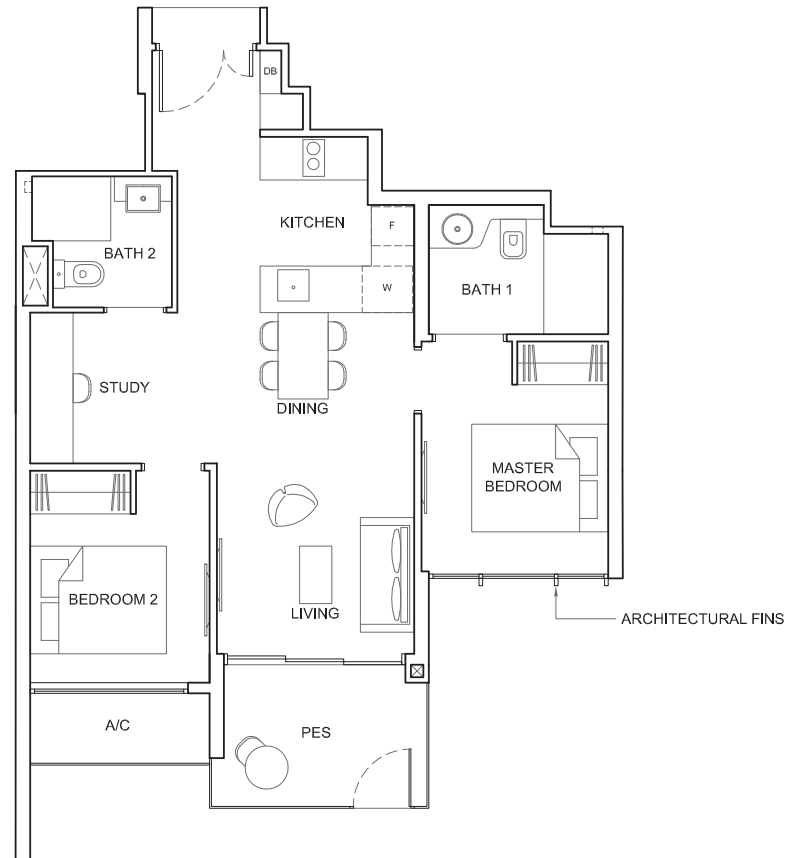
TYPE 2S1

Area: 66 sq m (include 3 sq m A/C LEDGE, 6 sq m BALCONY)
Unit(s): #03-17 TO #22-17



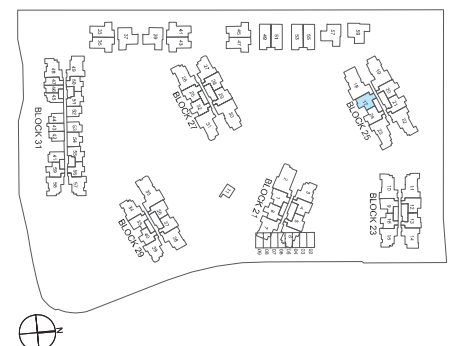
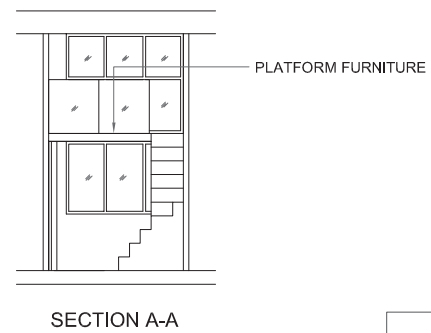
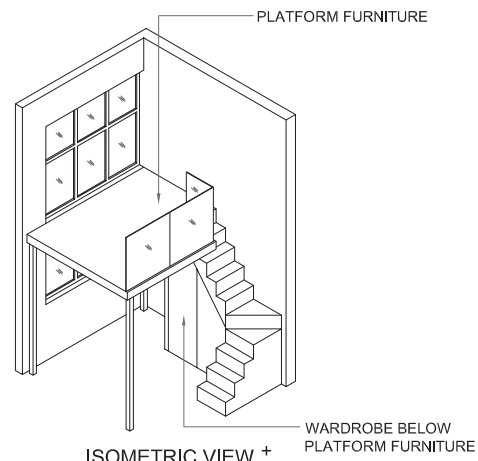
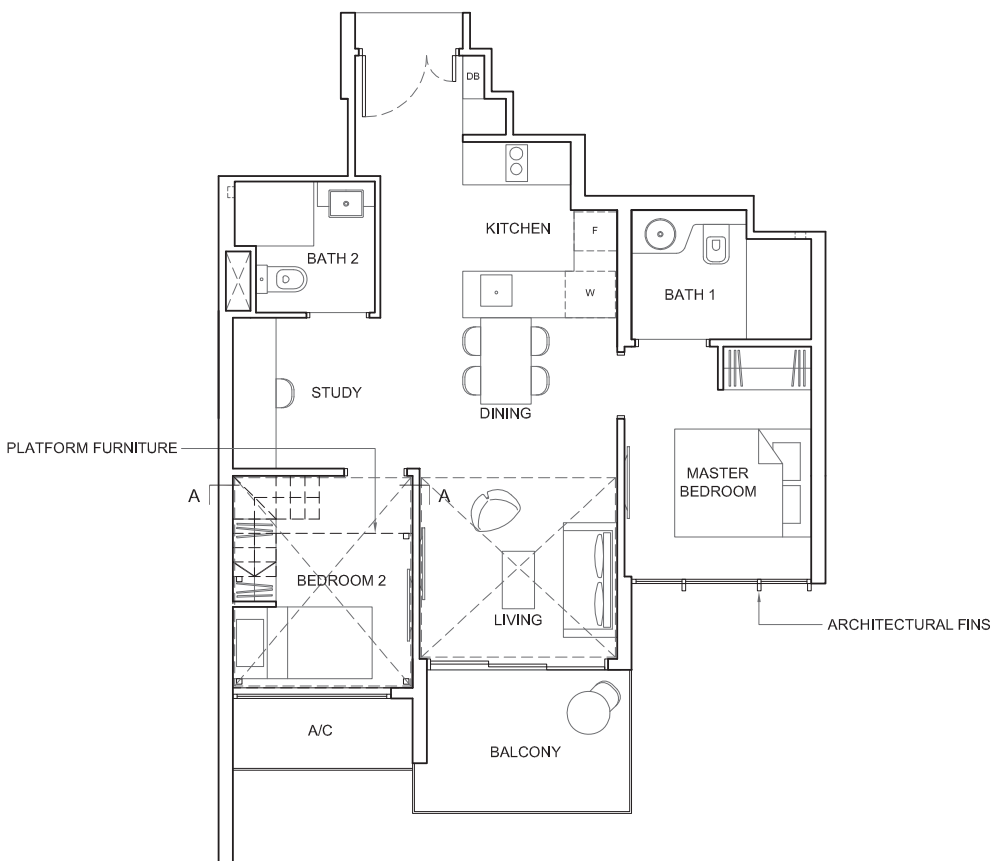
TYPE 2S1-P

Area: 66 sq m (include 3 sq m A/C LEDGE, 6 sq m PES)
Unit(s): #02-17



TYPE 2S1-PH

Area: 82 sq m (include 3 sq m A/C LEDGE, 6 sq m BALCONY)
(Include 16 sq m void)
Unit(s): #23-17



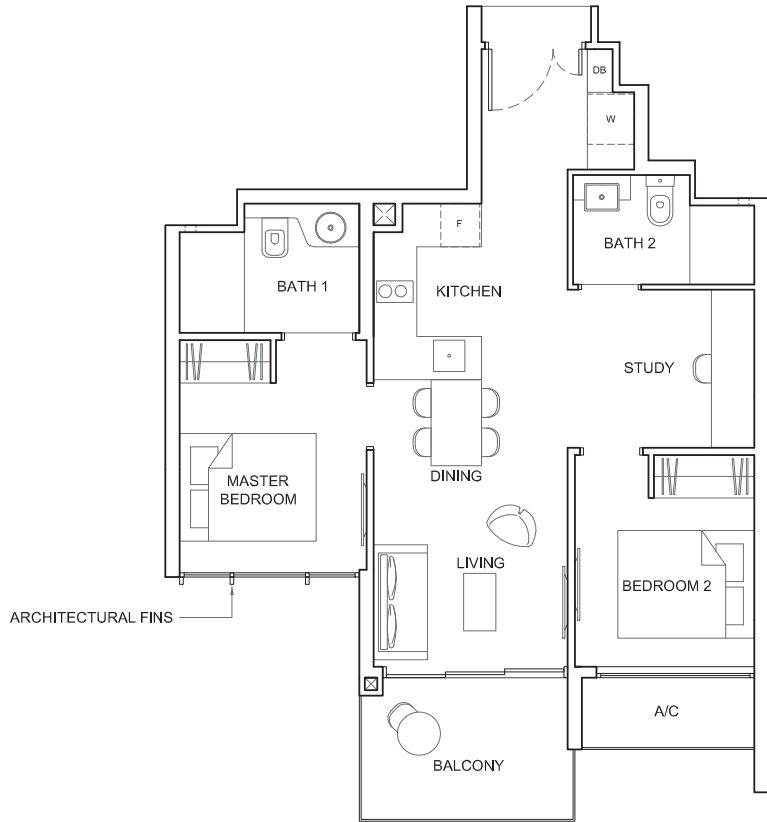
NOTE:

+ Isometric views have excluded railing drawings

Plans are subject to change/amendments as may be required and/or approved by the Developer and/or the relevant authorities and do not form part of any offer or contract. These are not drawn to scale and are for the purpose of visual presentation only.

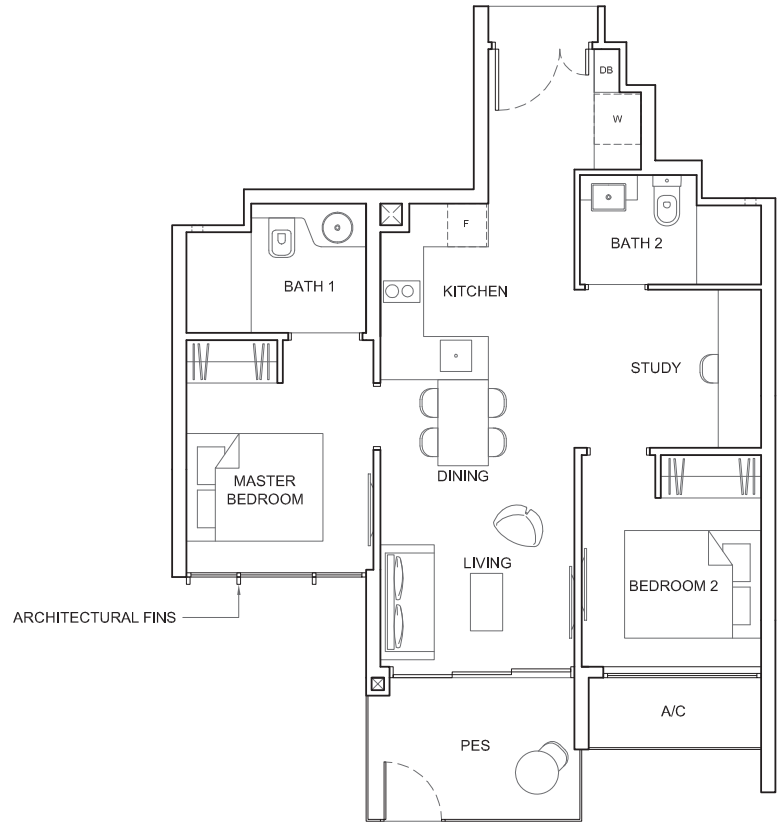
TYPE 2S2

Area: 65 sq m (include 3 sq m A/C LEDGE, 6 sq m BALCONY)
Unit(s): #03-24 TO #22-24



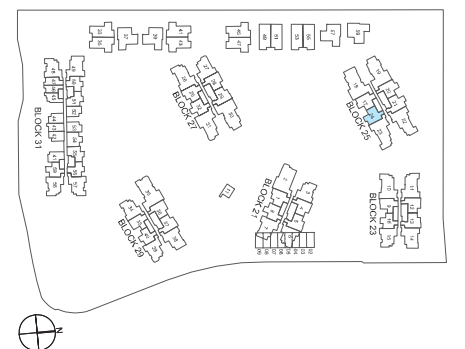
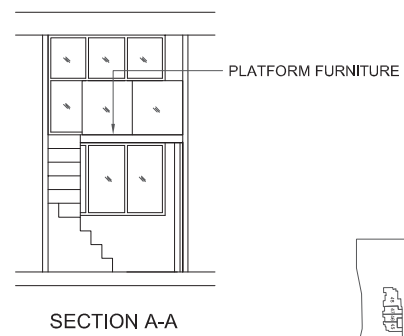
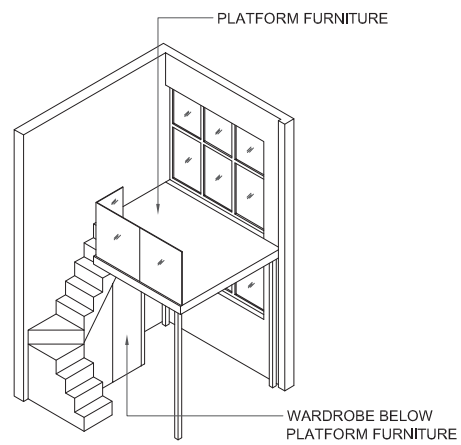
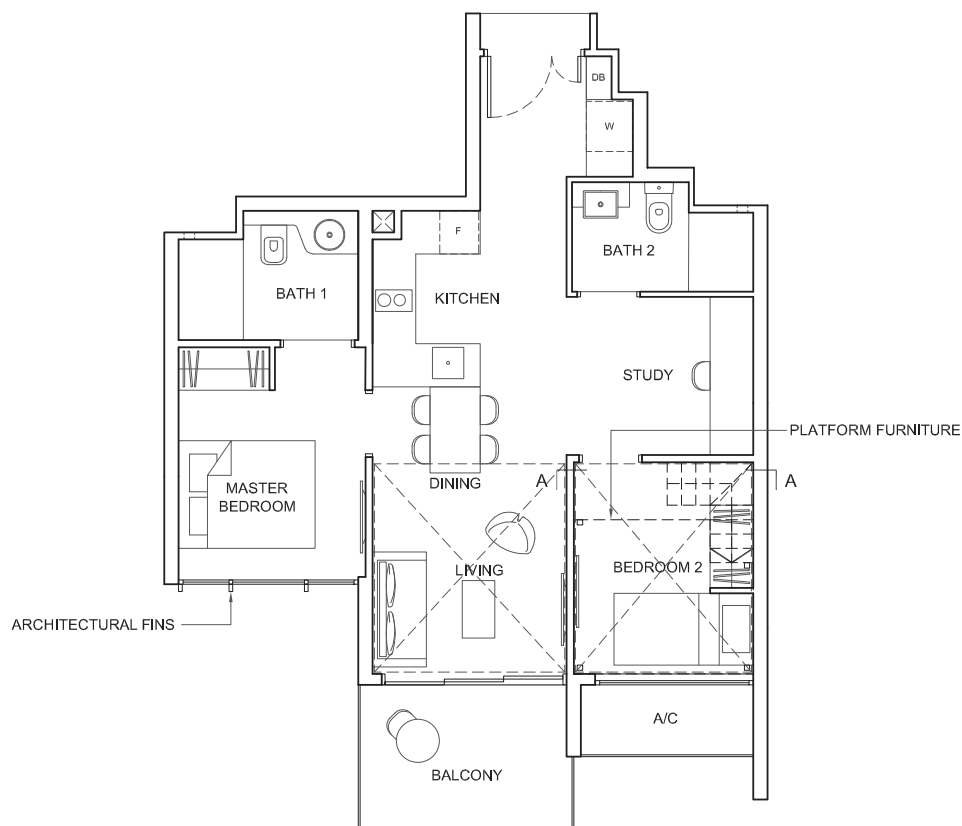
TYPE 2S2-P

Area: 65 sq m (include 3 sq m A/C LEDGE, 6 sq m PES)
Unit(s): #02-24



TYPE 2S2-PH

Area: 82 sq m (include 3 sq m A/C LEDGE, 6 sq m BALCONY)
(include 17 sq m VOID)
Unit(s): #23-24



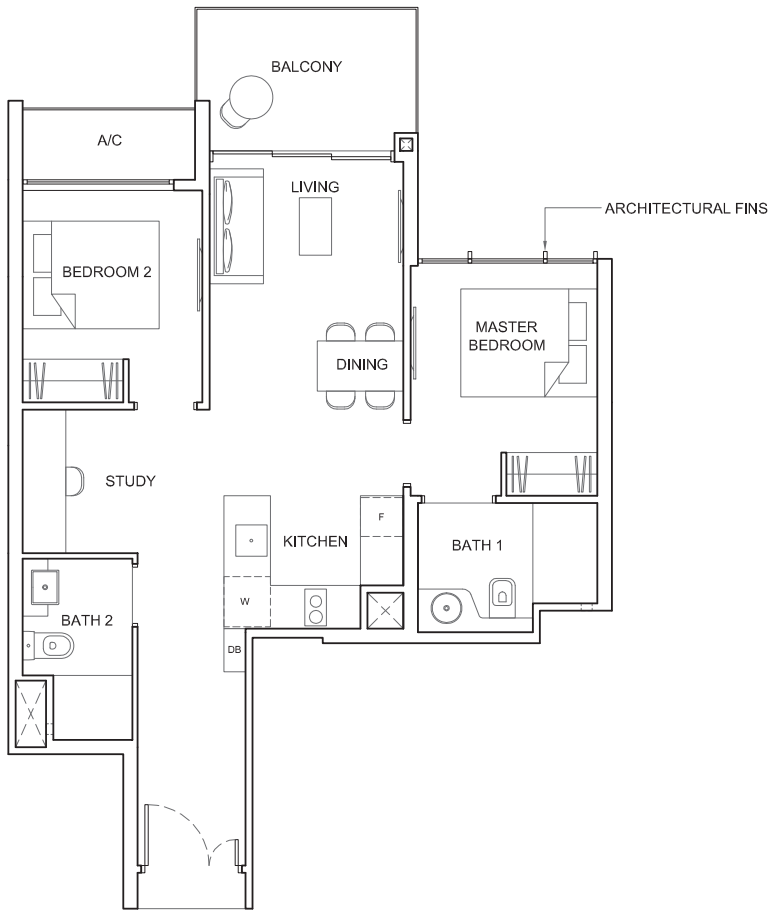
NOTE:

+ Isometric views have excluded railing drawings

Plans are subject to change/amendments as may be required and/or approved by the Developer and/or the relevant authorities and do not form part of any offer or contract. These are not drawn to scale and are for the purpose of visual presentation only.

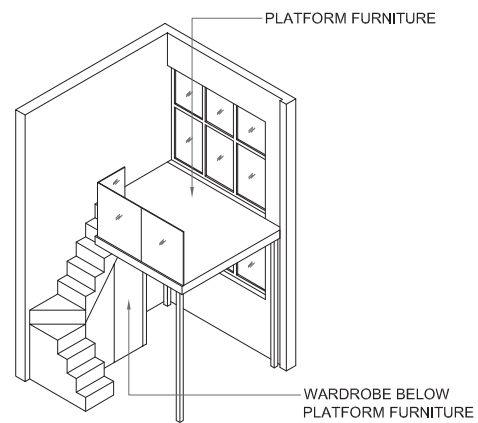
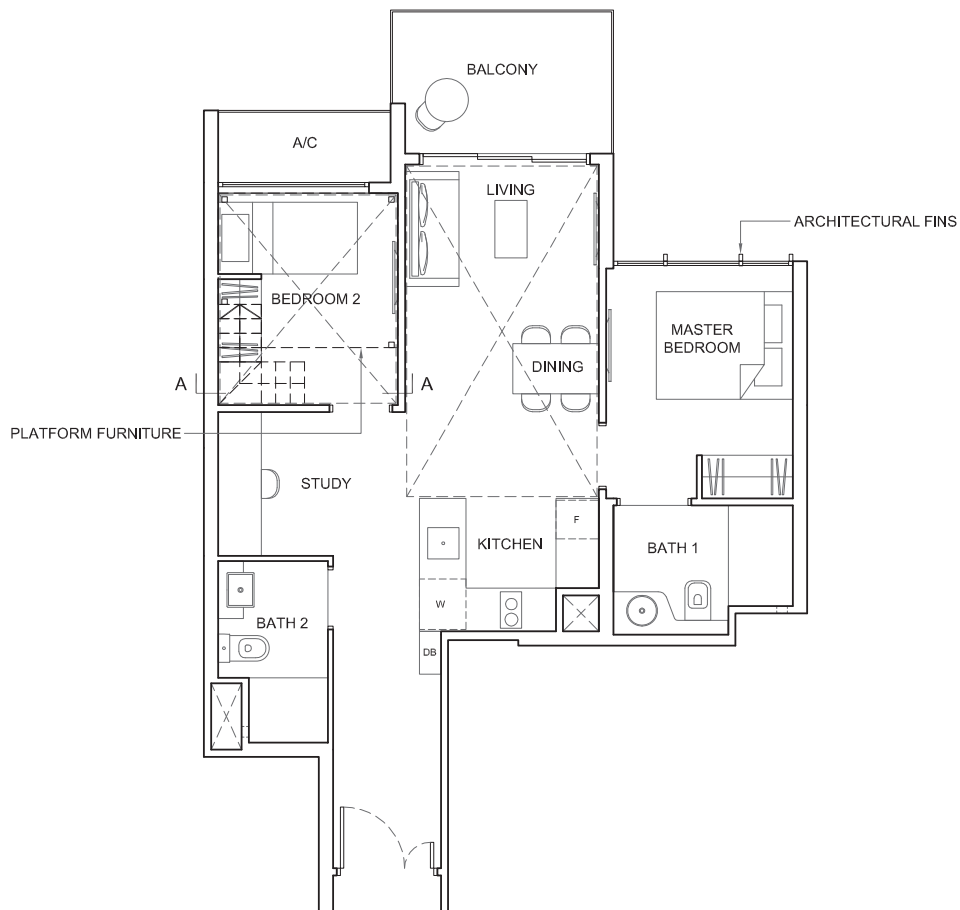
TYPE 2S3

Area: 67 sq m (include 3 sq m A/C LEDGE, 6 sq m BALCONY)
 Unit(s): #03-20 TO #22-20

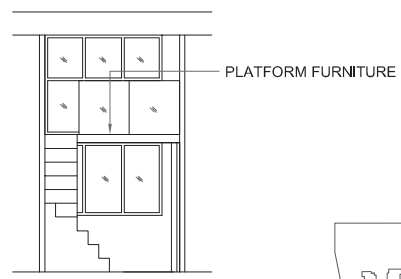


TYPE 2S3-PH

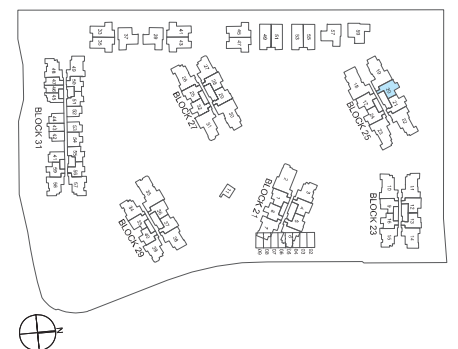
Area: 89 sq m (include 3 sq m A/C LEDGE, 6 sq m BALCONY)
 (include 22 sq m void)
 Unit(s): #23-20



ISOMETRIC VIEW +



SECTION A-A



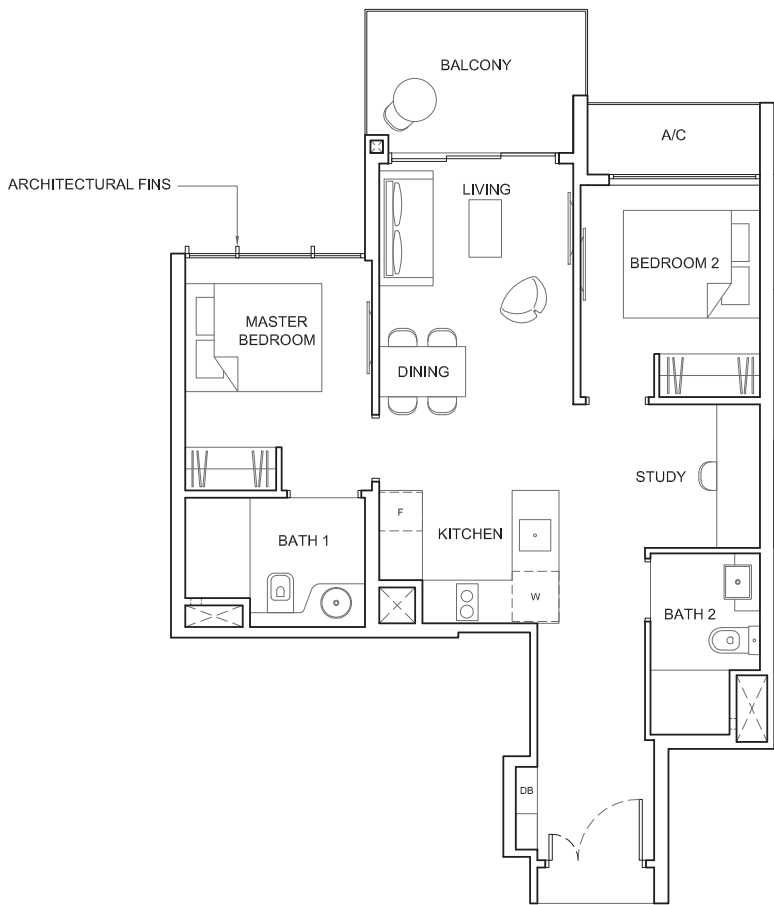
NOTE:

+ Isometric views have excluded railing drawings

Plans are subject to change/amendments as may be required and/or approved by the Developer and/or the relevant authorities and do not form part of any offer or contract. These are not drawn to scale and are for the purpose of visual presentation only.

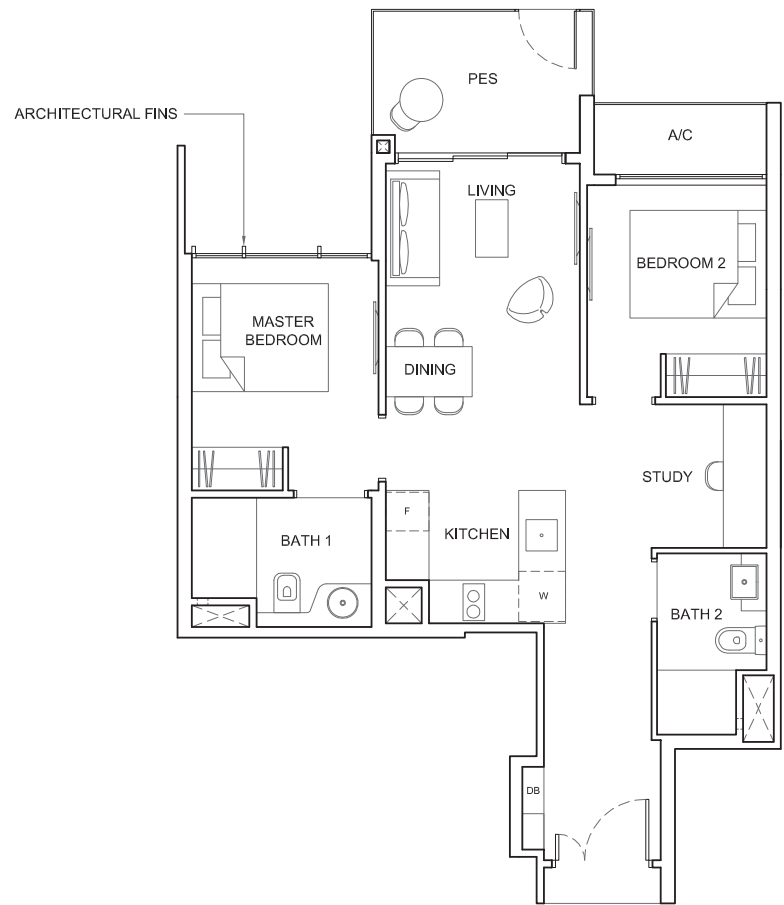
TYPE 2S4

Area: 68 sq m (include 3 sq m A/C LEDGE, 6 sq m BALCONY)
Unit(s): #03-21 TO #22-21



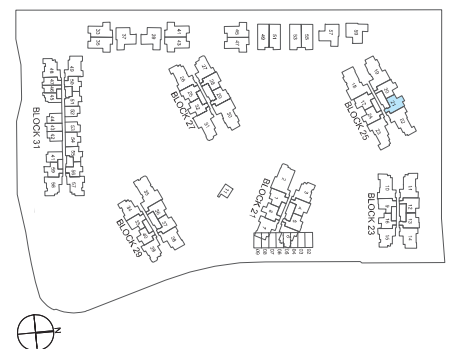
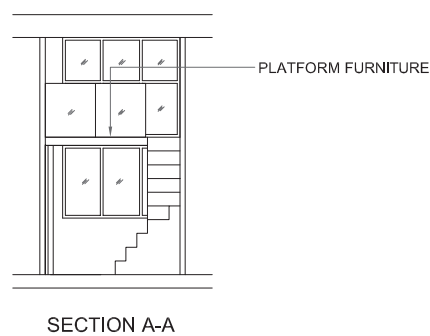
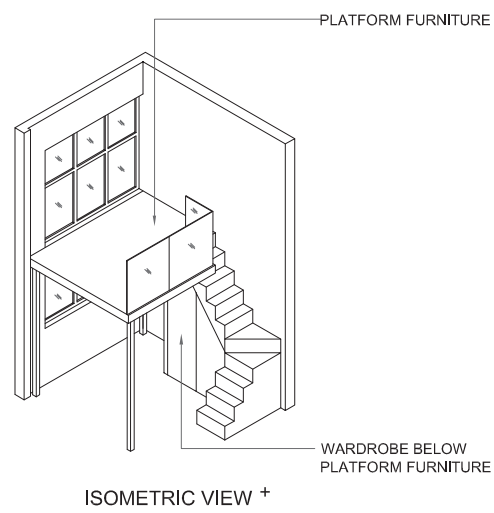
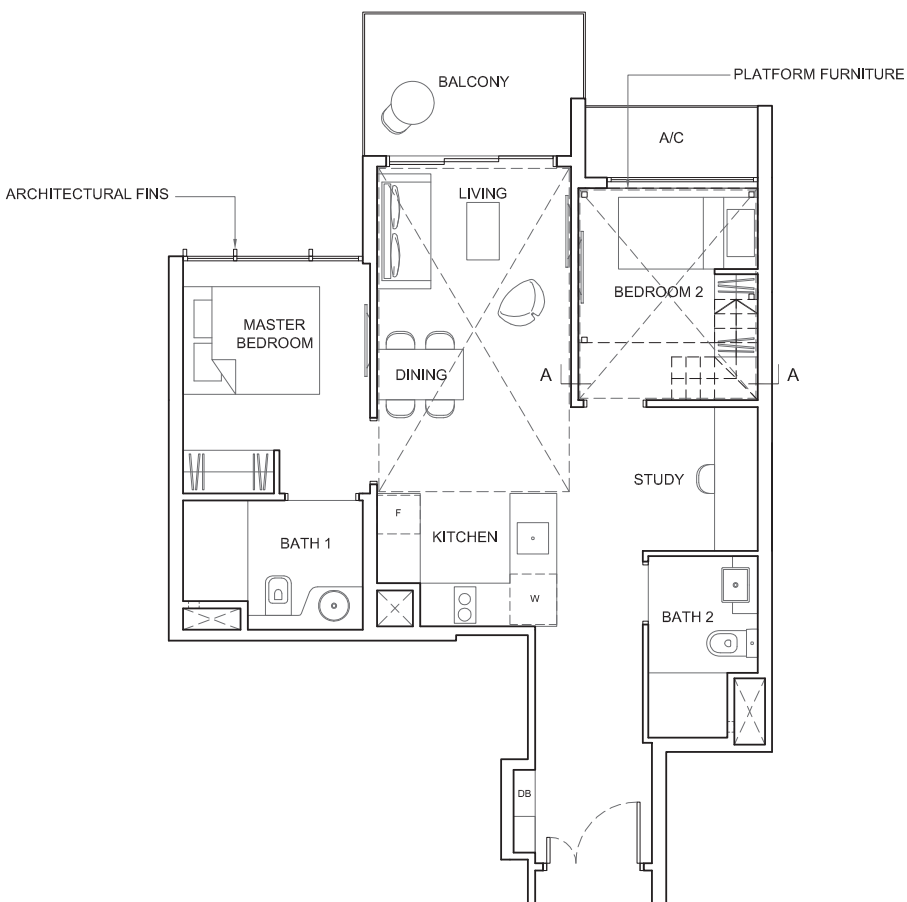
TYPE 2S4-P

Area: 68 sq m (include 3 sq m A/C LEDGE, 6 sq m PES)
Unit(s): #02-21



TYPE 2S4-PH

Area: 90 sq m (include 3 sq m A/C LEDGE, 6 sq m BALCONY)
(include 22 sq m void)
Unit(s): #23-21



NOTE:

+ Isometric views have excluded railing drawings

Plans are subject to change/amendments as may be required and/or approved by the Developer and/or the relevant authorities and do not form part of any offer or contract. These are not drawn to scale and are for the purpose of visual presentation only.