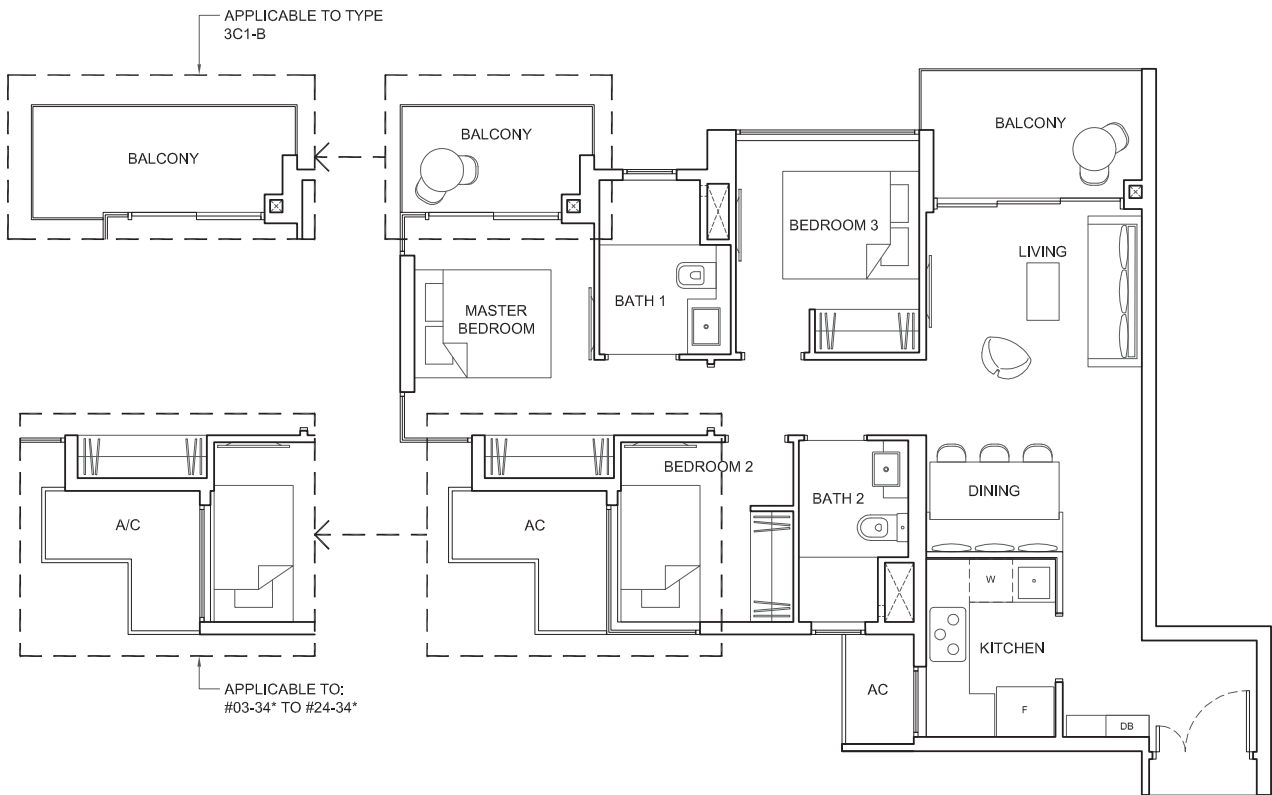


TYPE 3C1

Area: 81 sq m (include 5 sq m A/C LEDGE, 10 sq m BALCONY)
Unit(s): #03-03 TO #21-03
#03-34* TO #22-34*

TYPE 3C1-B

Area: 83 sq m (include 5 sq m A/C LEDGE, 12 sq m BALCONY)
Unit(s): #22-03 TO #23-03
#23-34* TO #24-34*

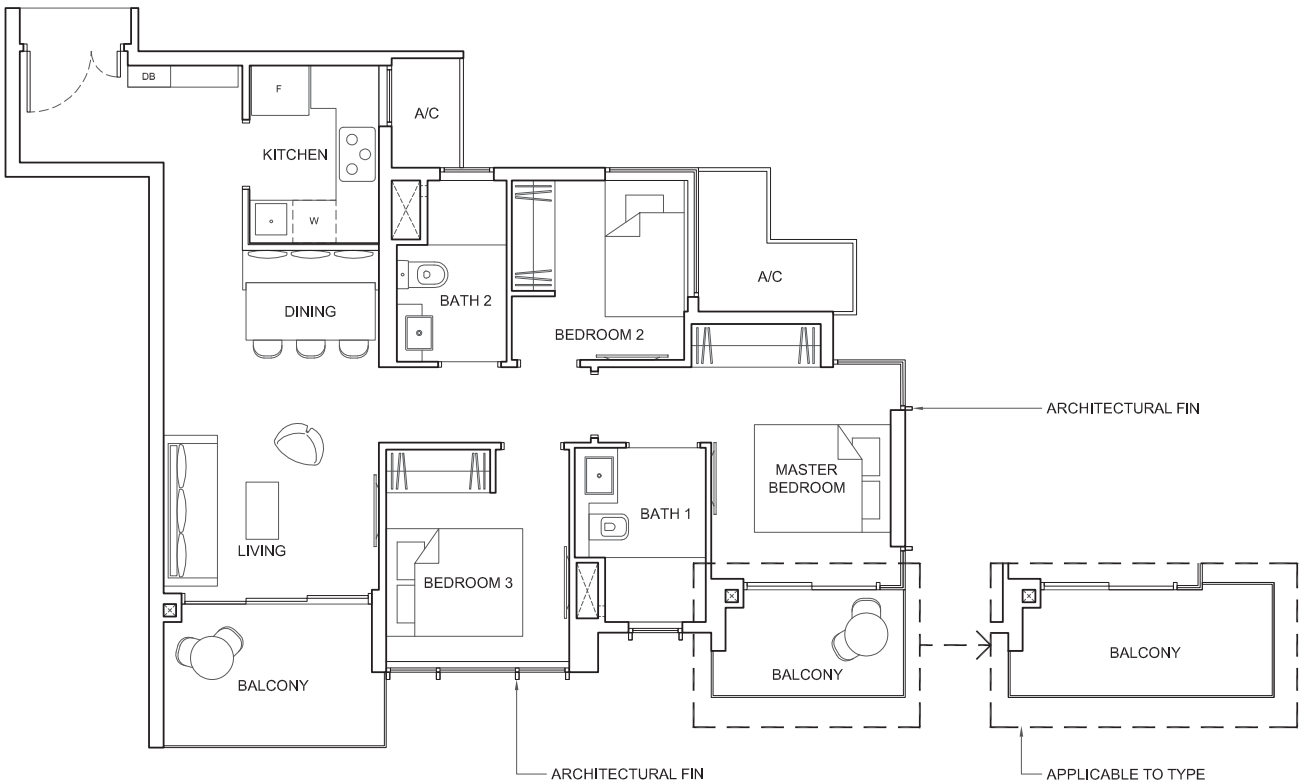


TYPE 3C1-a

Area: 83 sq m (include 5 sq m A/C LEDGE, 11 sq m BALCONY)
Unit(s): #03-15 TO #20-15

TYPE 3C1-aB

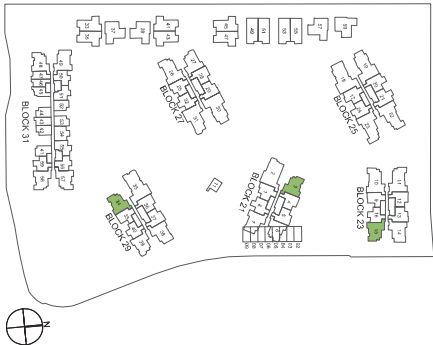
Area: 84 sq m (include 5 sq m A/C LEDGE, 12 sq m BALCONY)
Unit(s): #21-15 TO #22-15



NOTE:

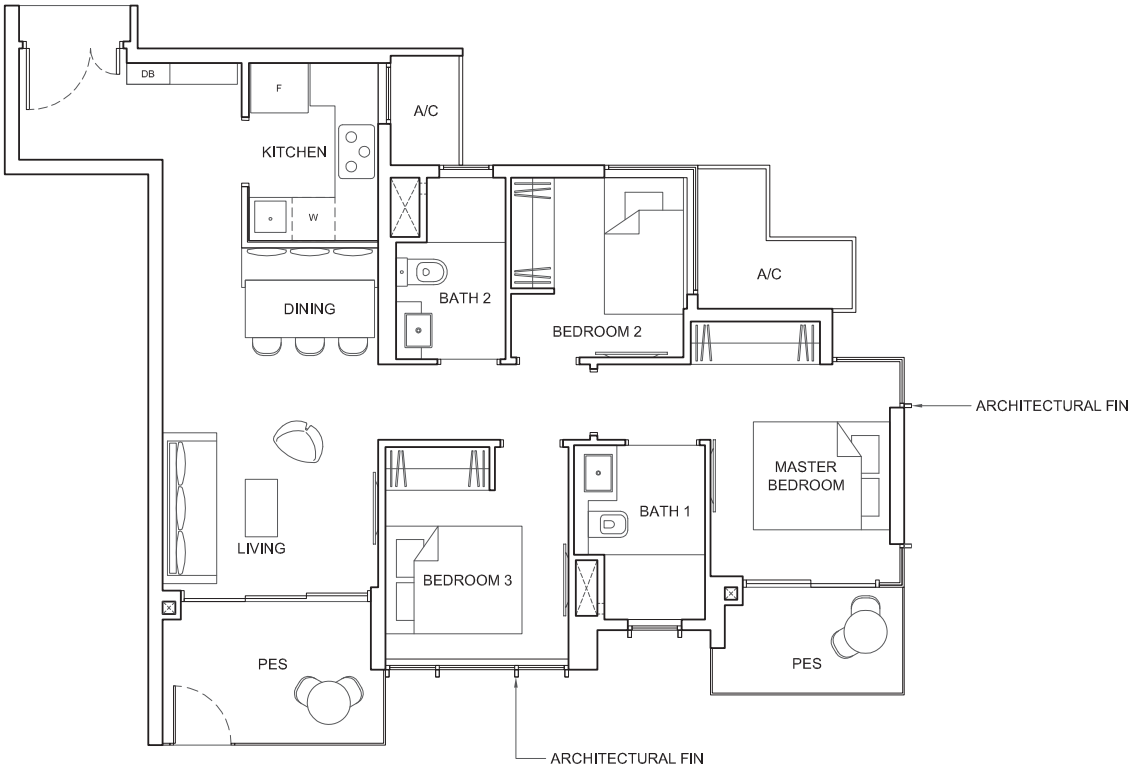
* mirror image

Plans are subject to change/amendments as may be required and/or approved by the Developer and/or the relevant authorities and do not form part of any offer or contract. These are not drawn to scale and are for the purpose of visual presentation only.



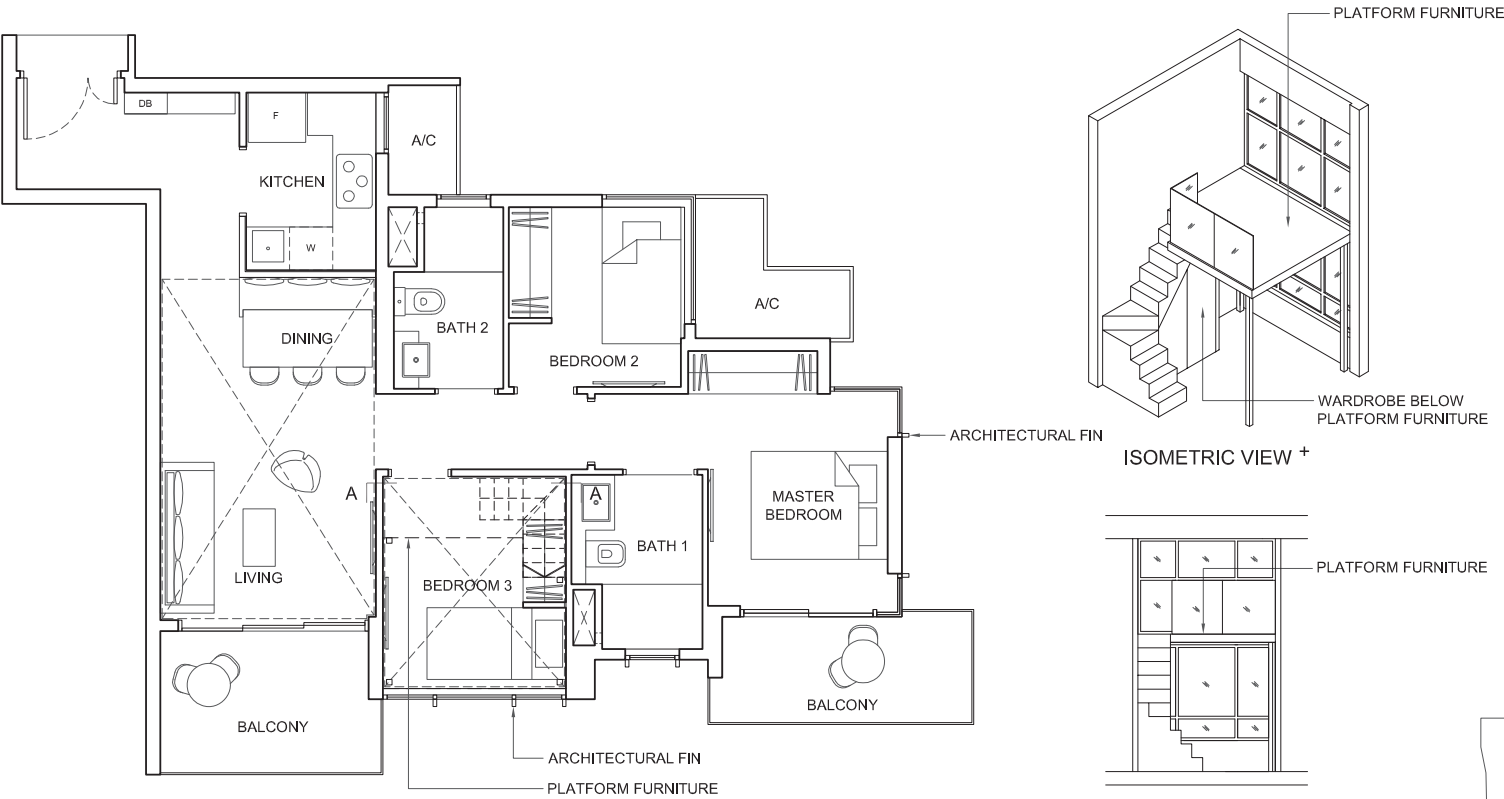
TYPE 3C1-aP

Area: 83 sq m (include 5 sq m A/C LEDGE, 11 sq m PES)
Unit(s): #02-15



TYPE 3C1-aPH

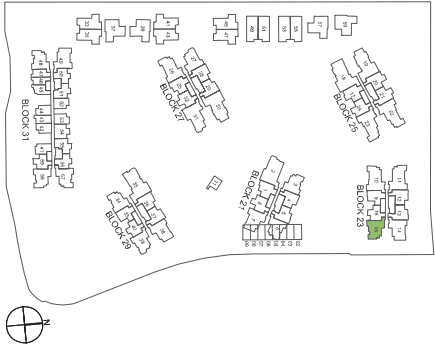
Area: 108 sq m (include 5 sq m A/C LEDGE, 12 sq m BALCONY)
(include 24 sq m VOID)
Unit(s): #23-15



NOTE:

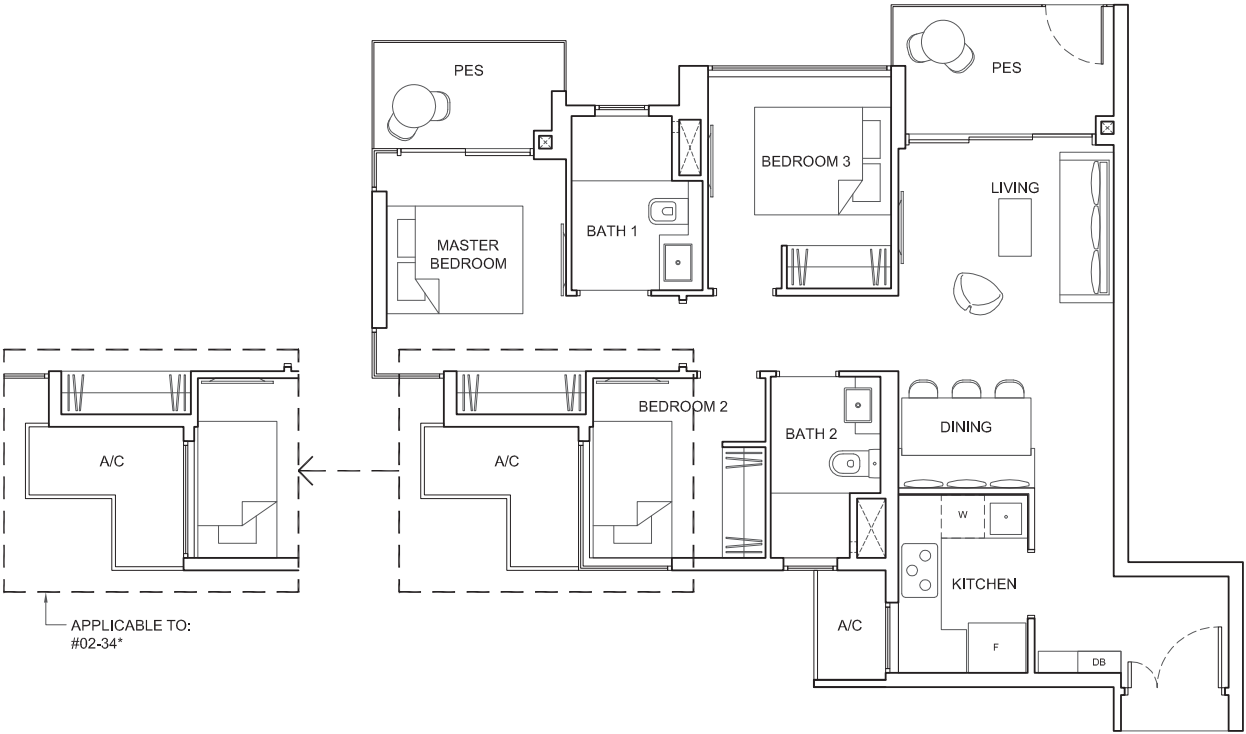
+ Isometric views have excluded railing drawings

Plans are subject to change/amendments as may be required and/or approved by the Developer and/or the relevant authorities and do not form part of any offer or contract. These are not drawn to scale and are for the purpose of visual presentation only.



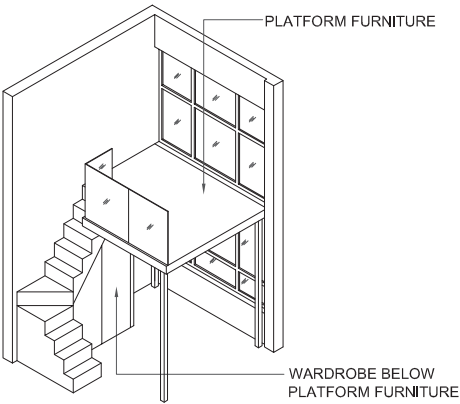
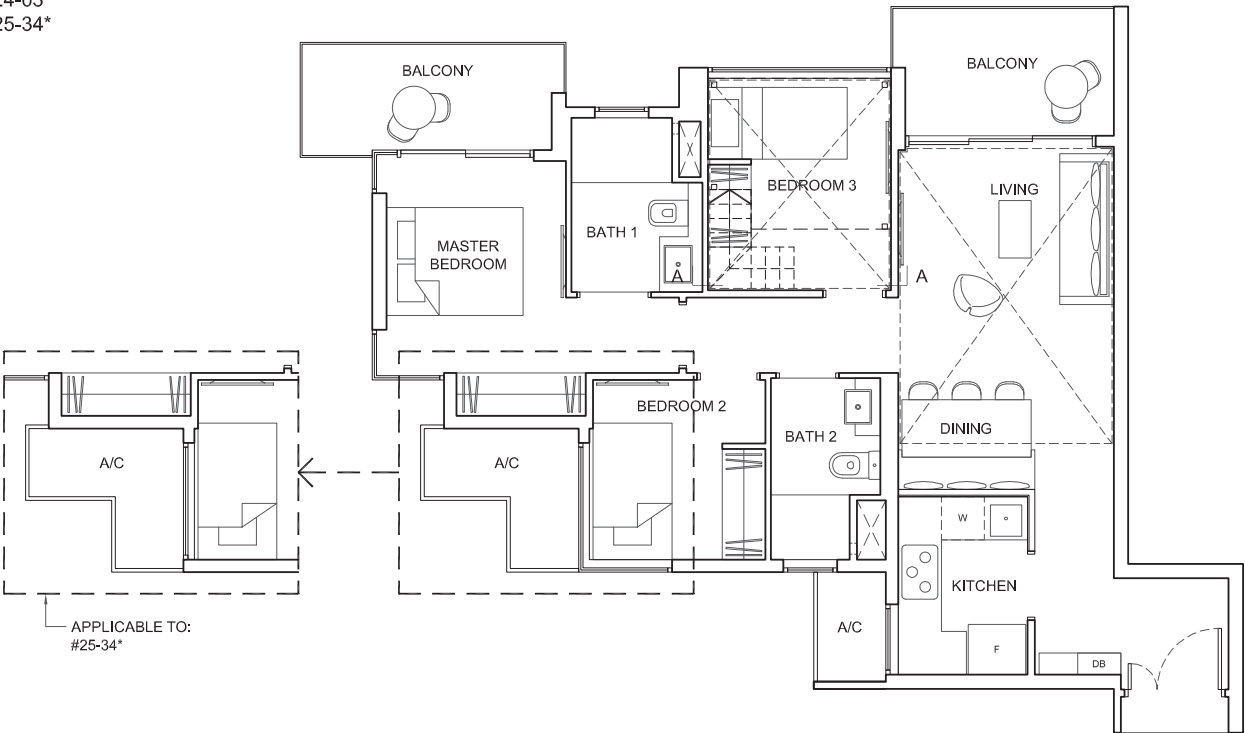
TYPE 3C1-P

Area: 81 sq m (include 5 sq m A/C LEDGE, 10 sq m PES)
Unit(s): #02-03
#02-34*

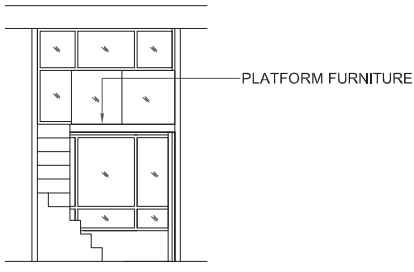


TYPE 3C1-PH

Area: 105 sq m (include 5 sq m A/C LEDGE, 12 sq m BALCONY)
(include 22 sq m VOID)
Unit(s): #24-03
#25-34*



ISOMETRIC VIEW +

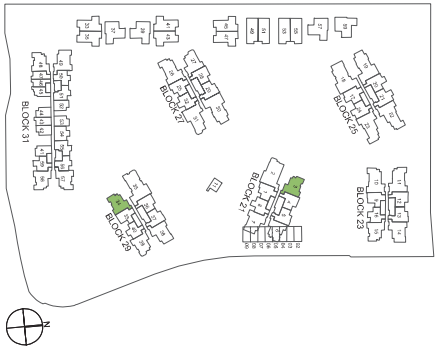


SECTION A-A

NOTE:

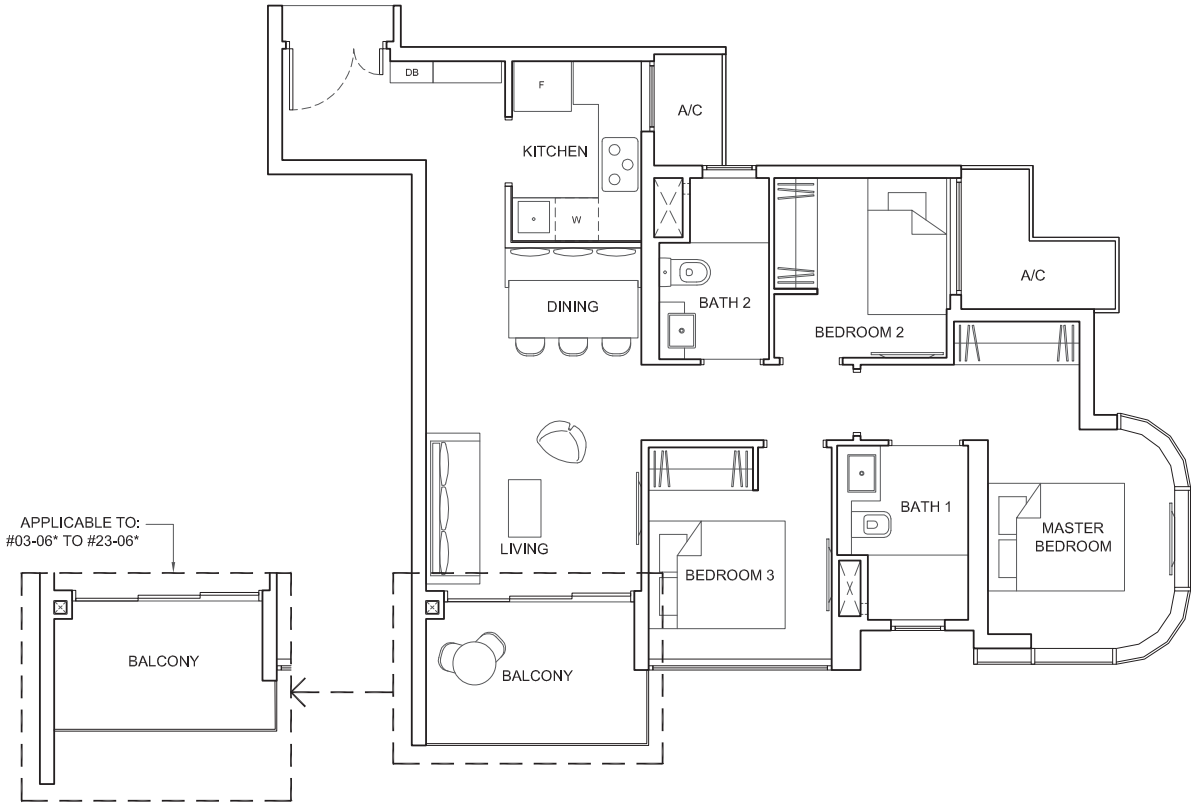
* mirror image
+ Isometric views have excluded railing drawings

Plans are subject to change/amendments as may be required and/or approved by the Developer and/or the relevant authorities and do not form part of any offer or contract. These are not drawn to scale and are for the purpose of visual presentation only.



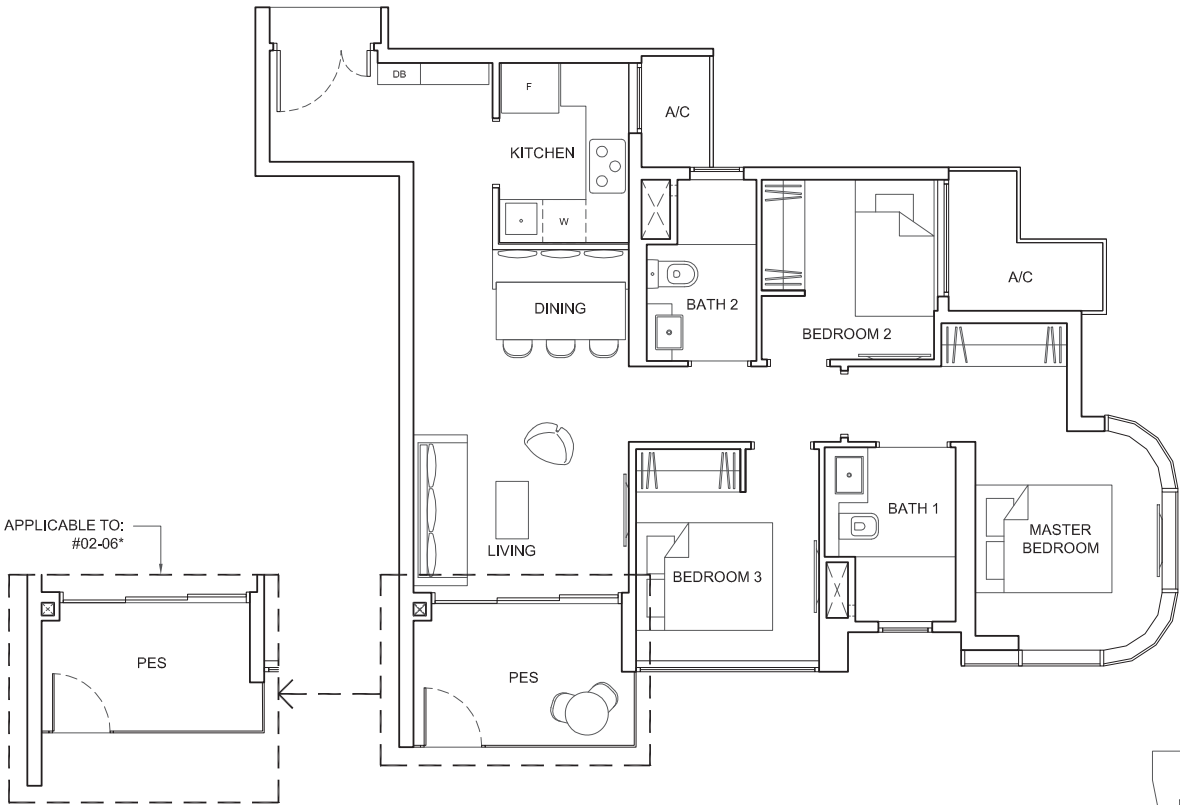
TYPE 3C2

Area: 81 sq m (include 5 sq m A/C LEDGE, 6 sq m BALCONY)
Unit(s): #03-06* TO #23-06*
#03-39 TO #24-39



TYPE 3C2-P

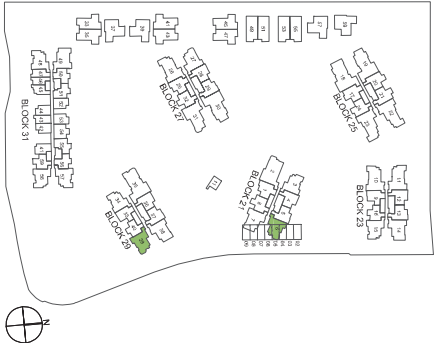
Area: 81 sq m (include 5 sq m A/C LEDGE, 6 sq m PES)
Unit(s): #02-06*
#02-39



NOTE:

* mirror image

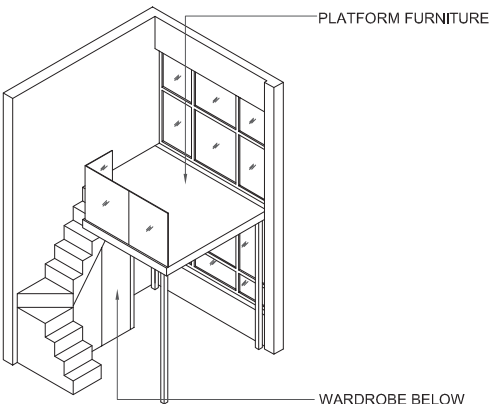
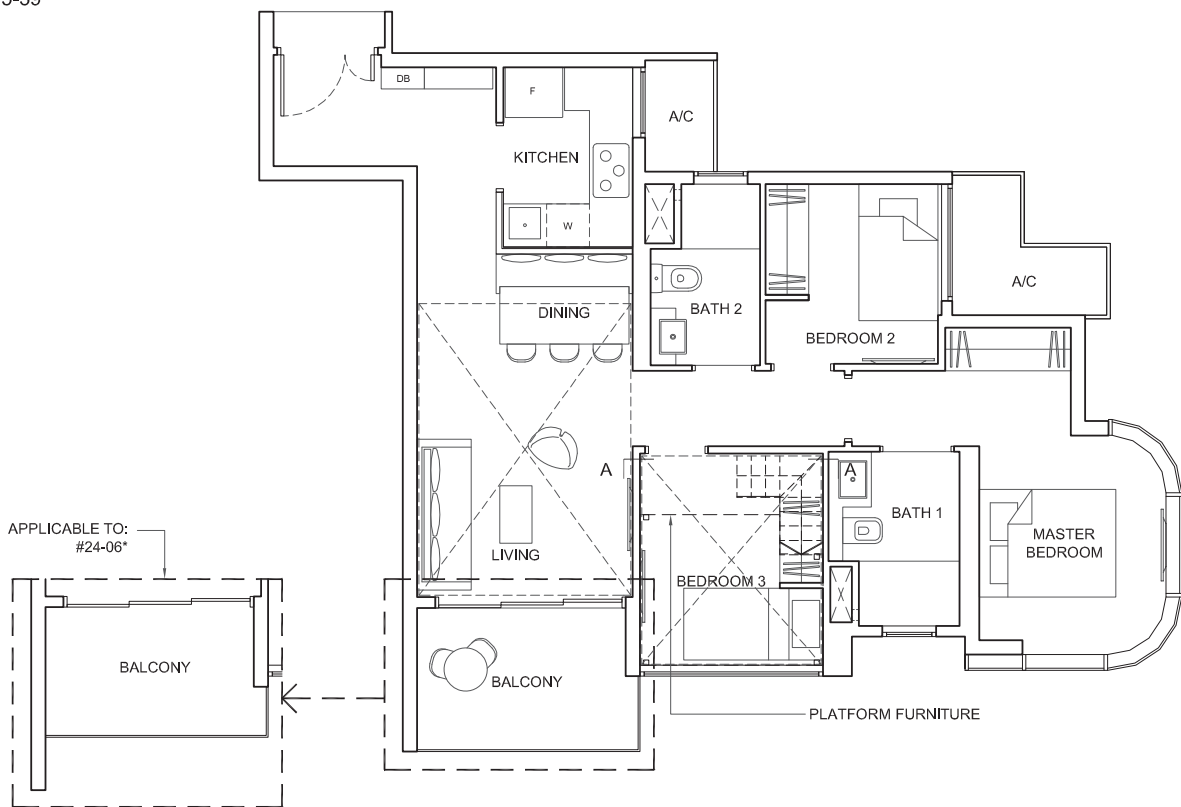
Plans are subject to change/amendments as may be required and/or approved by the Developer and/or the relevant authorities and do not form part of any offer or contract. These are not drawn to scale and are for the purpose of visual presentation only.



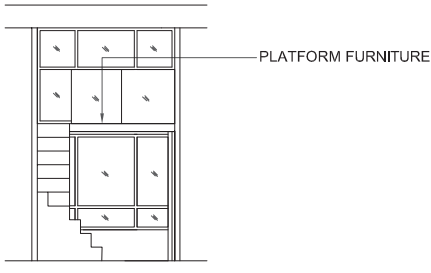
TYPE 3C2-PH

Area: 103 sq m (include 5 sq m A/C LEDGE, 6 sq m BALCONY)
(include 22 sq m VOID)

Unit(s): #24-06*
#25-39



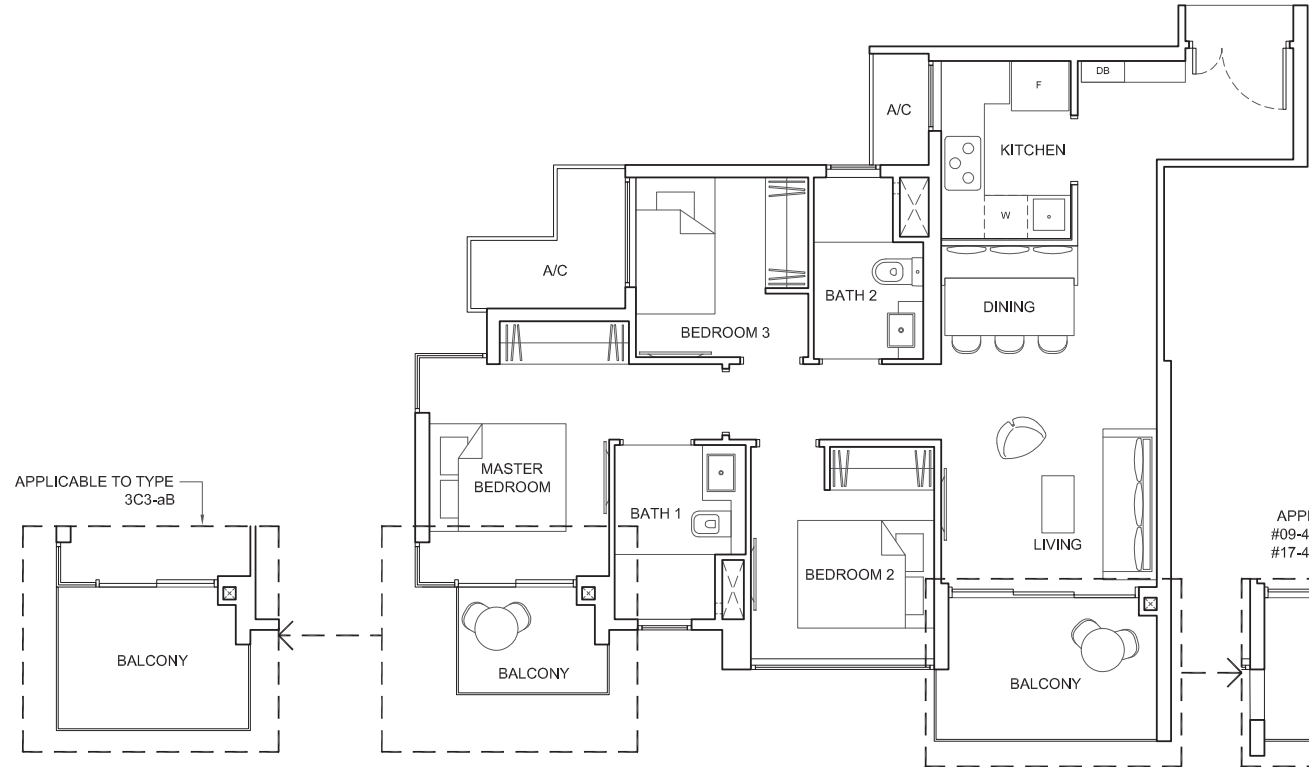
ISOMETRIC VIEW +



SECTION A-A

TYPE 3C3-a

Area: 81 sq m (include 5 sq m A/C LEDGE, 10 sq m BALCONY)
Unit(s): #03-48 TO #04-48, #08-48 TO #12-48, #16-48 TO #20-48,
#24-48



TYPE 3C3-aB

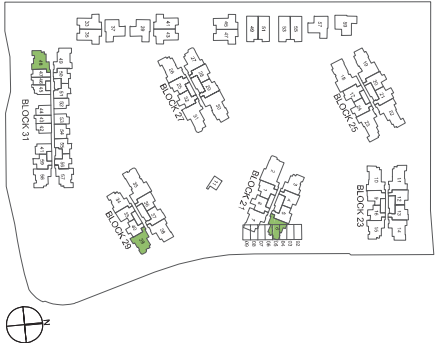
Area: 83 sq m (include 5 sq m A/C LEDGE, 12 sq m BALCONY)
Unit(s): #05-48 TO #07-48, #13-48 TO #15-48, #21-48 TO #23-48



NOTE:

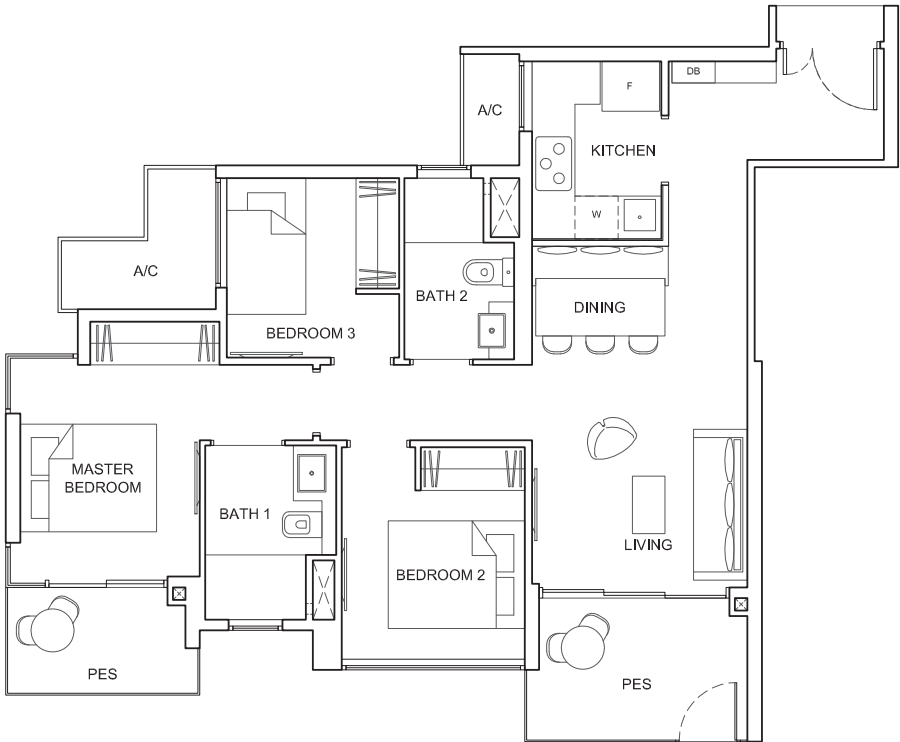
* mirror image
+Isometric views have excluded railing drawings

Plans are subject to change/amendments as may be required and/or approved by the Developer and/or the relevant authorities and do not form part of any offer or contract. These are not drawn to scale and are for the purpose of visual presentation only.



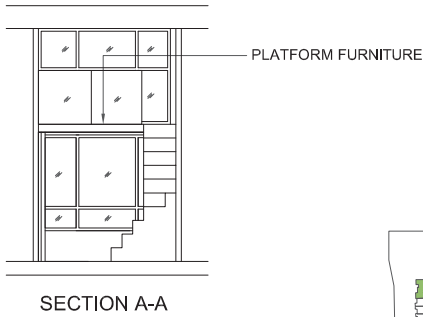
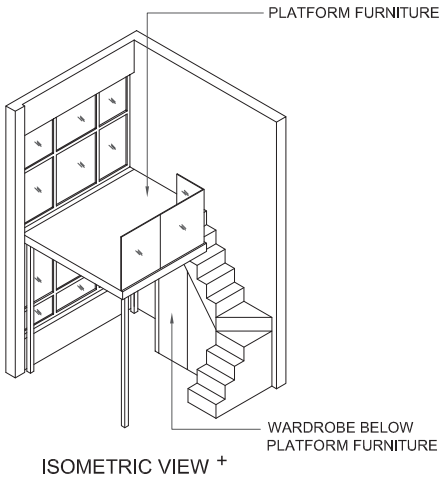
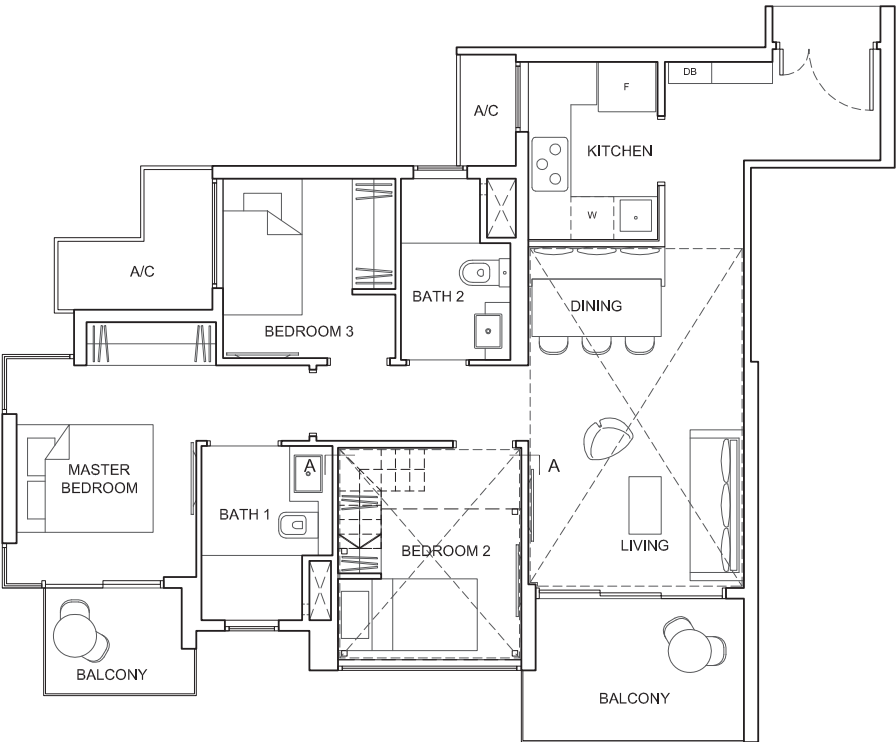
TYPE 3C3-aP

Area: 82 sq m (include 5 sq m A/C LEDGE, 11 sq m PES)
Unit(s): #02-48



TYPE 3C3-aPH

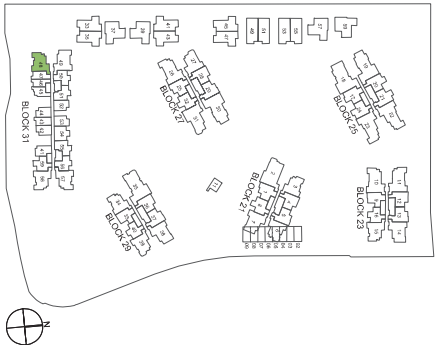
Area: 105 sq m (include 5 sq m A/C LEDGE, 10 sq m BALCONY)
(include 24 sq m VOID)
Unit(s): #25-48



NOTE:

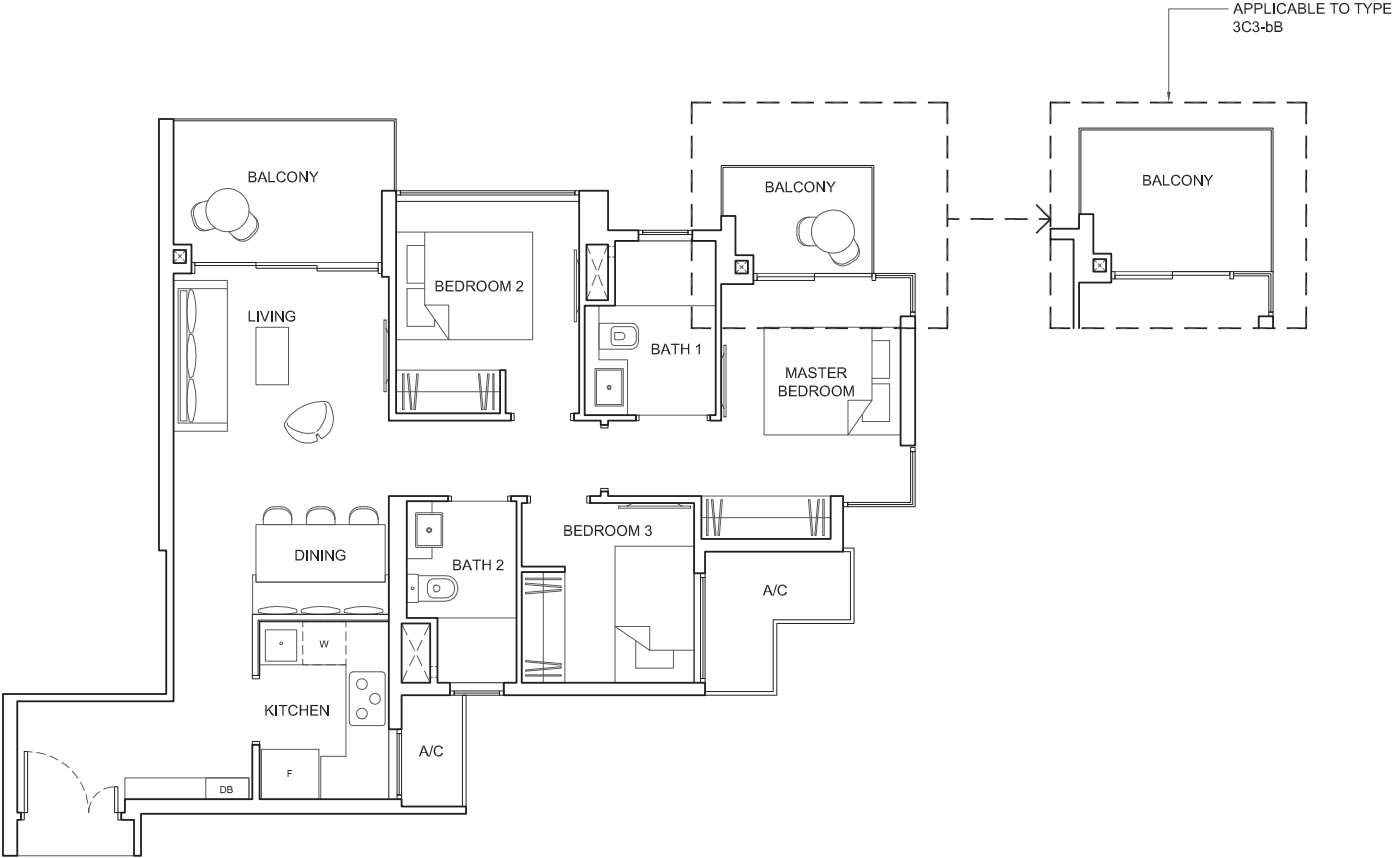
+ Isometric views have excluded railing drawings

Plans are subject to change/amendments as may be required and/or approved by the Developer and/or the relevant authorities and do not form part of any offer or contract. These are not drawn to scale and are for the purpose of visual presentation only.



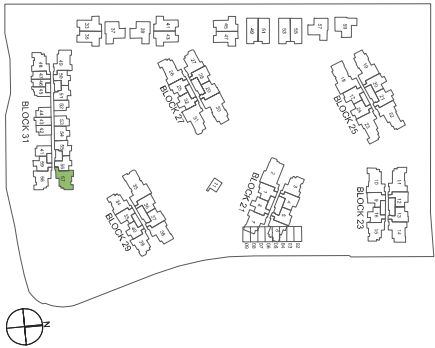
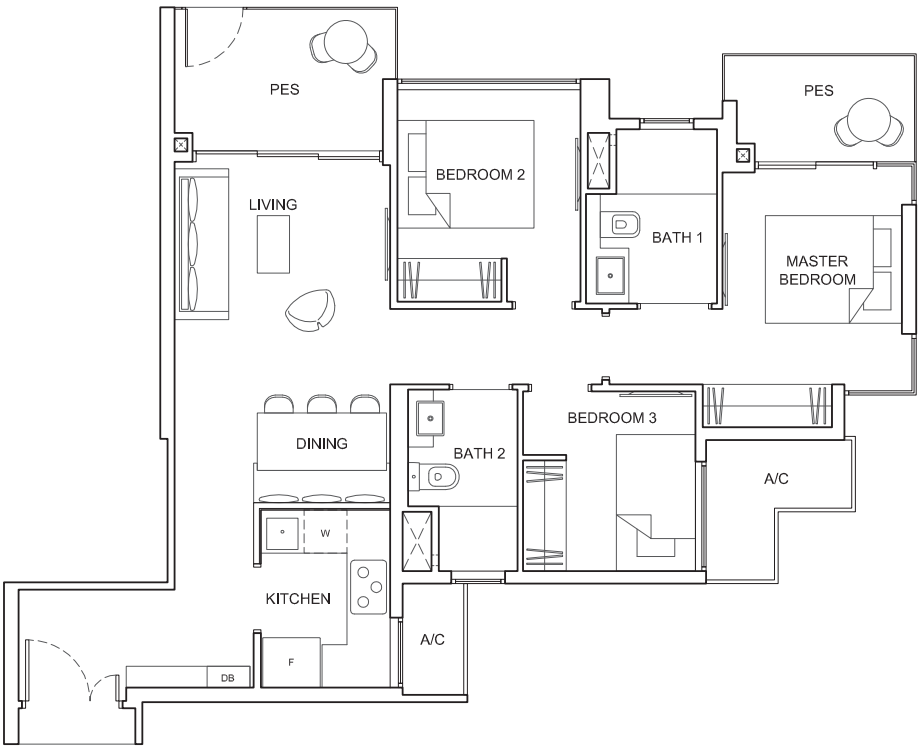
TYPE 3C3-b

Area: 81 sq m (include 5 sq m A/C LEDGE, 10 sq m BALCONY)
Unit(s): #03-57 TO #04-57, #08-57 TO #12-57, #16-57 TO #20-57, #24-57



TYPE 3C3-bP

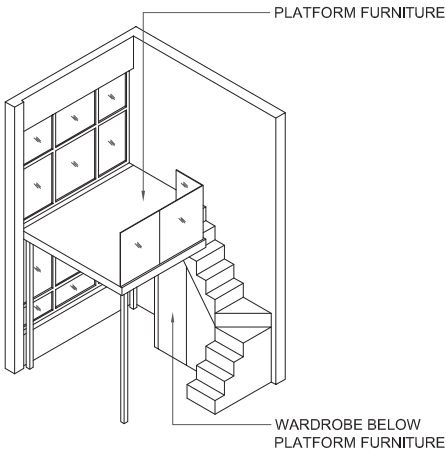
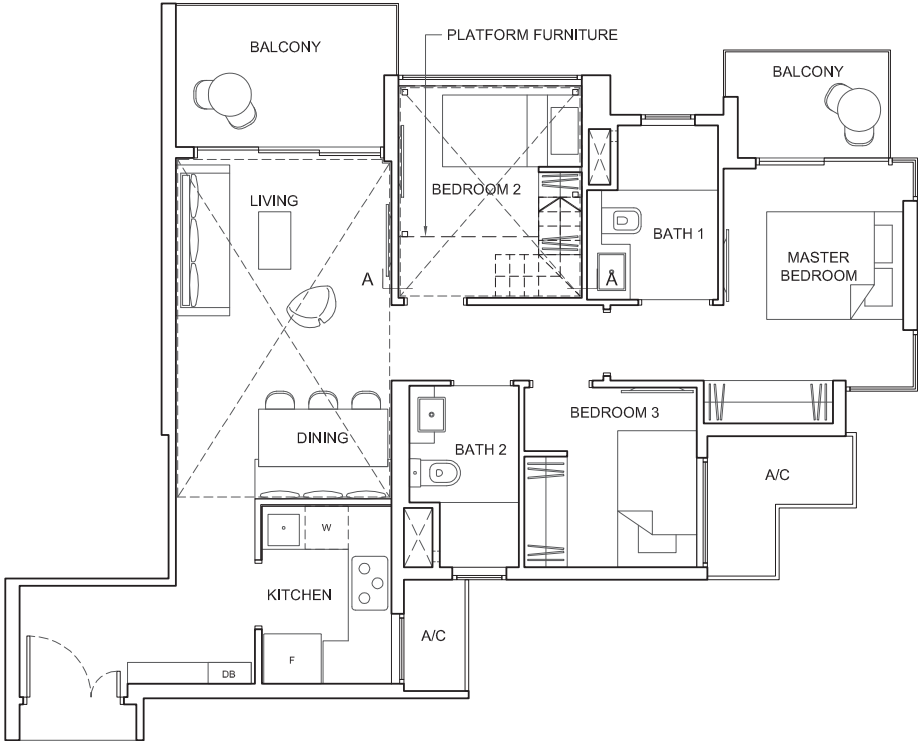
Area: 82 sq m (include 5 sq m A/C LEDGE, 11 sq m PES)
Unit(s): #02-57



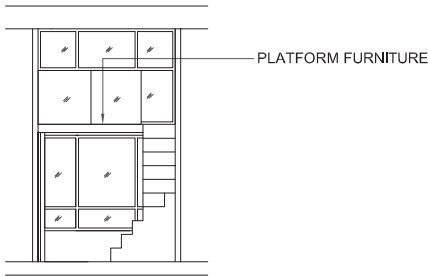
TYPE 3C3-bPH

Area: 105 sq m (include 5 sq m A/C LEDGE, 10 sq m BALCONY)
(include 24 sq m VOID)

Unit(s): #25-57



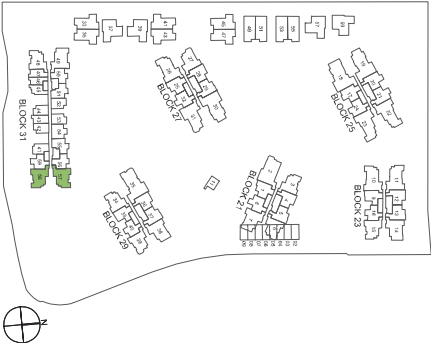
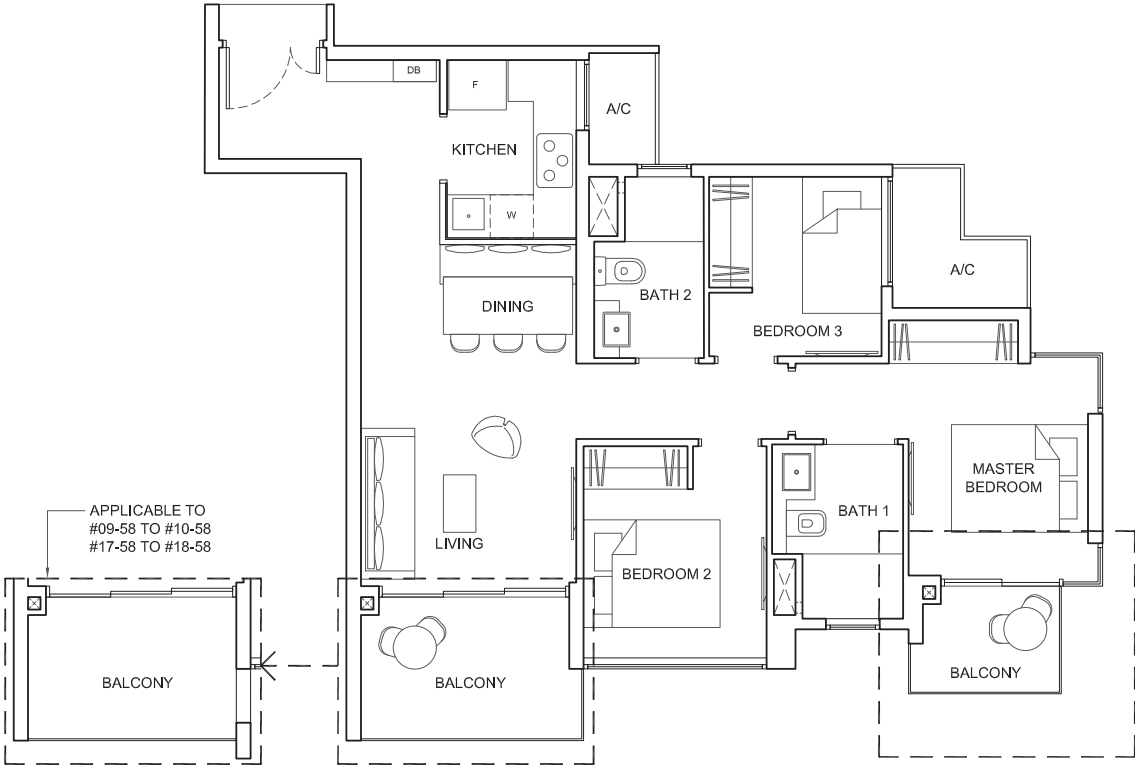
ISOMETRIC VIEW +



SECTION A-A

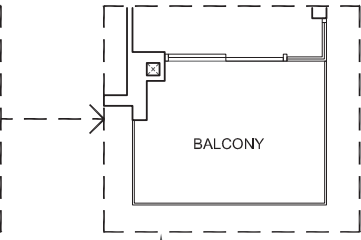
TYPE 3C3-c

Area: 81 sq m (include 5 sq m A/C LEDGE, 10 sq m BALCONY)
Unit(s): #03-58 TO #04-58, #08-58 TO #12-58, #16-58 TO #20-58, #24-58



TYPE 3C3-cB

Area: 83 sq m (include 5 sq m A/C LEDGE, 12 sq m BALCONY)
Unit(s): #05-58 TO #07-58, #13-58 TO #15-58, #21-58 TO #23-58



APPLICABLE TO TYPE 3C3-cB

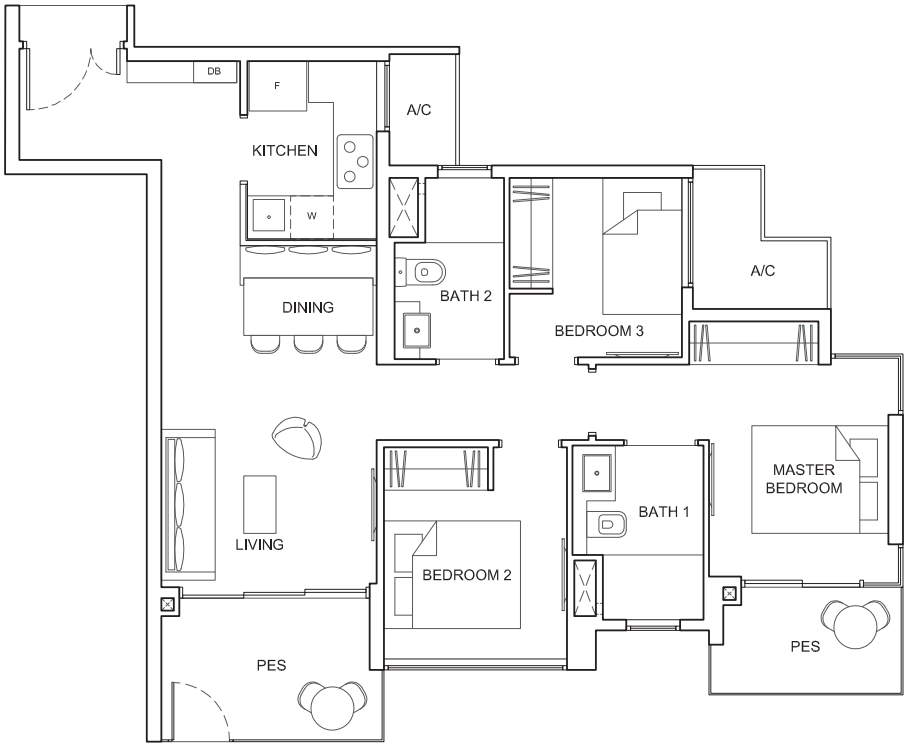
NOTE:

+ Isometric views have excluded railing drawings

Plans are subject to change/amendments as may be required and/or approved by the Developer and/or the relevant authorities and do not form part of any offer or contract. These are not drawn to scale and are for the purpose of visual presentation only.

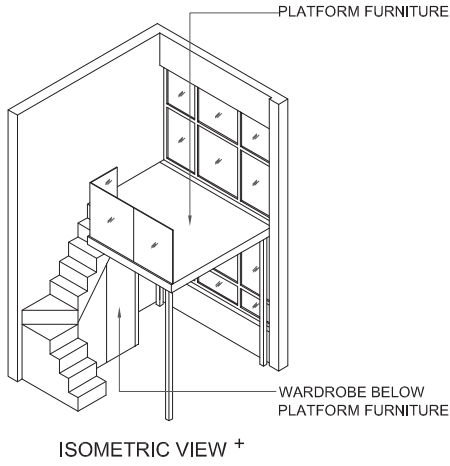
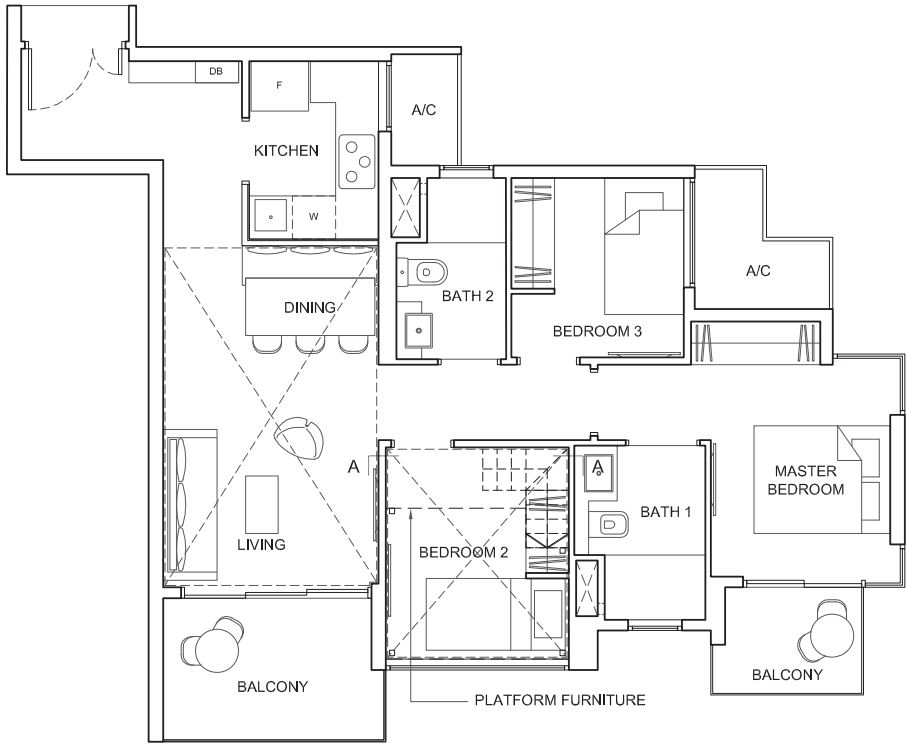
TYPE 3C3-cP

Area: 82 sq m (include 5 sq m A/C LEDGE, 11 sq m PES)
Unit(s): #02-58

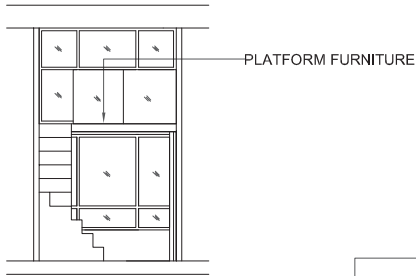


TYPE 3C3-cPH

Area: 105 sq m (include 5 sq m A/C LEDGE, 10 sq m BALCONY)
(include 24 sq m VOID)
Unit(s): #25-58



ISOMETRIC VIEW +



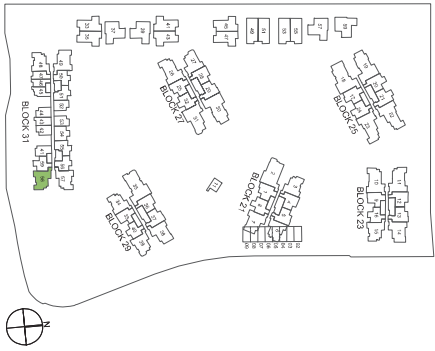
SECTION A-A

NOTE:

+ Isometric views have excluded railing drawings



Plans are subject to change/amendments as may be required and/or approved by the Developer and/or the relevant authorities and do not form part of any offer or contract. These are not drawn to scale and are for the purpose of visual presentation only.



TYPE 3D1

Area: 91 sq m (include 4 sq m A/C LEDGE, 11 sq m BALCONY)
Unit(s): #03-14 TO #20-14
#03-38 TO #22-38

TYPE 3D1-B

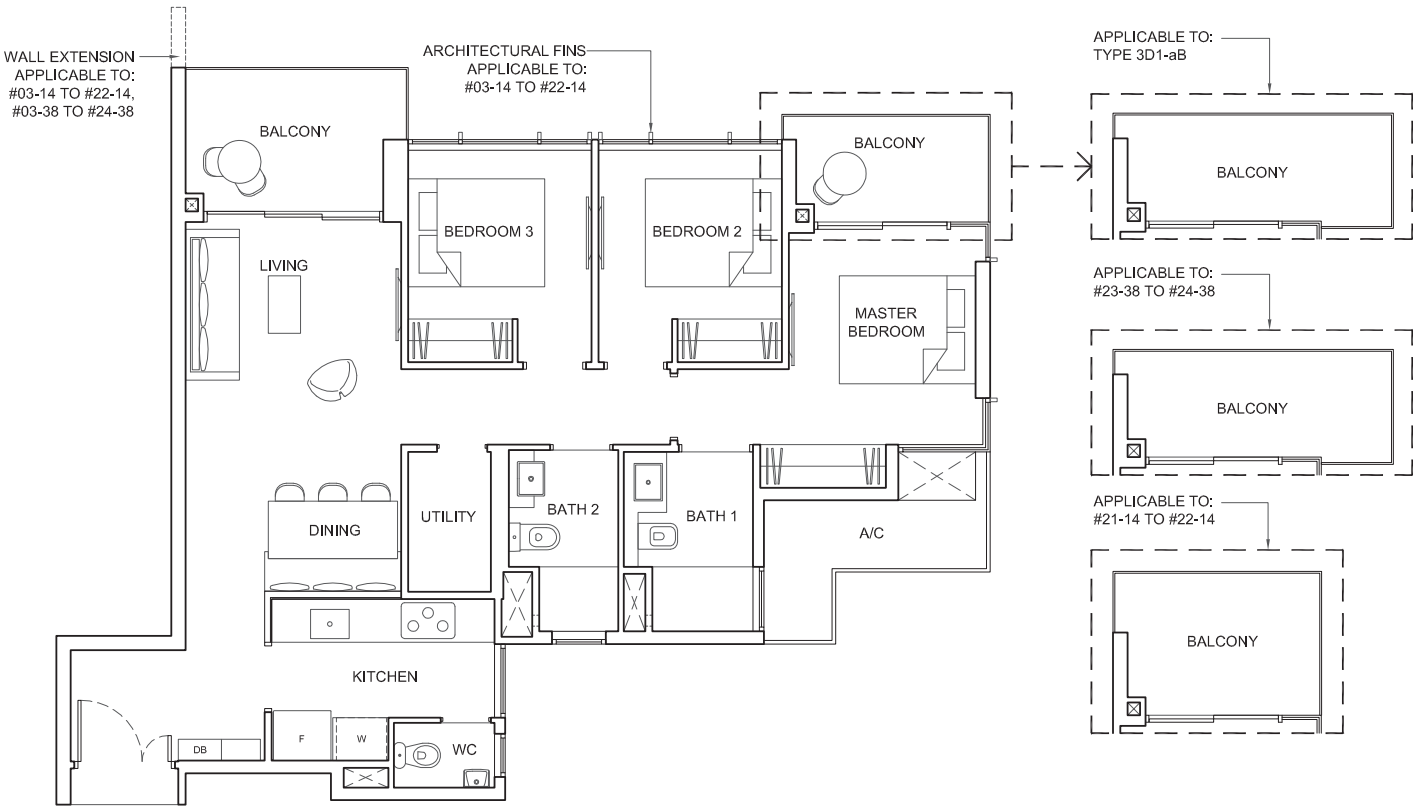
Area: 93 sq m (include 4 sq m A/C LEDGE, 12 sq m BALCONY)
Unit(s): #21-14 TO #22-14
#23-38 TO #24-38

TYPE 3D1-a

Area: 92 sq m (include 4 sq m A/C LEDGE, 11 sq m BALCONY)
Unit(s): #03-07* TO #21-07*

TYPE 3D1-aB

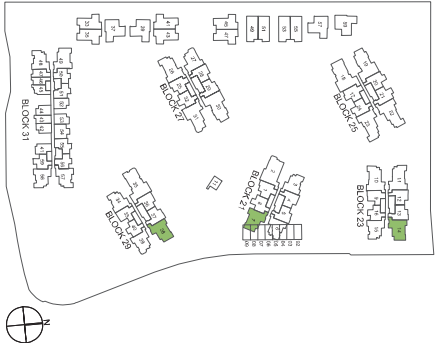
Area: 93 sq m (include 4 sq m A/C LEDGE, 12 sq m BALCONY)
Unit(s): #22-07* TO #23-07*



NOTE:

* mirror image

Plans are subject to change/amendments as may be required and/or approved by the Developer and/or the relevant authorities and do not form part of any offer or contract. These are not drawn to scale and are for the purpose of visual presentation only.



TYPE 3D1-P1

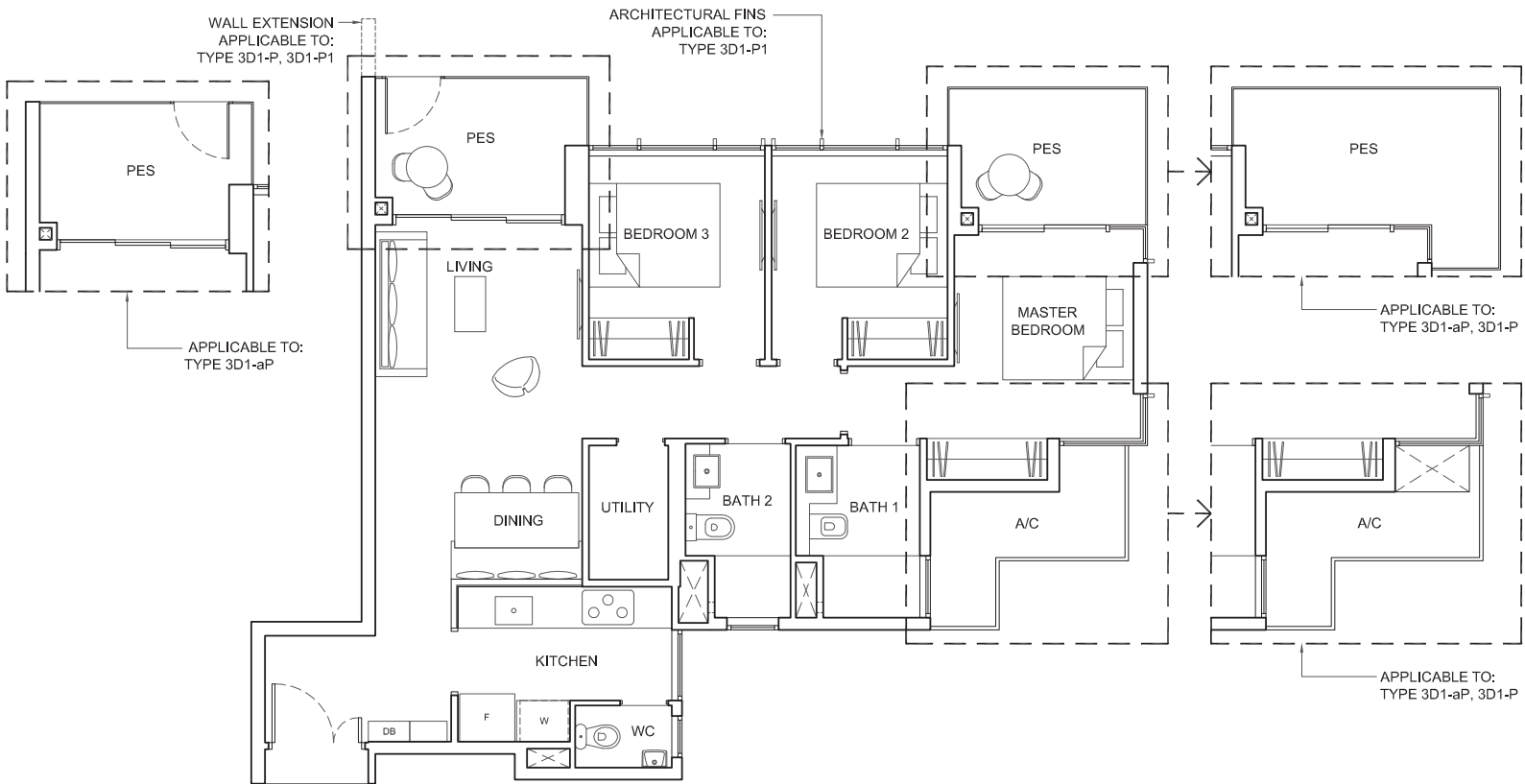
Area: 93 sq m (include 5 sq m A/C LEDGE, 12 sq m PES)
Unit(s): #02-14

TYPE 3D1-P

Area: 95 sq m (include 4 sq m A/C LEDGE, 14 sq m PES)
Unit(s): #02-38

TYPE 3D1-aP

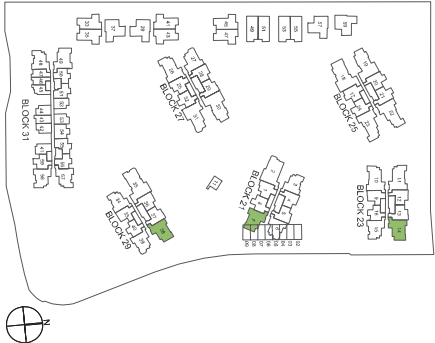
Area: 95 sq m (include 4 sq m A/C LEDGE, 14 sq m PES)
Unit(s): #02-07*



NOTE:

* mirror image

Plans are subject to change/amendments as may be required and/or approved by the Developer and/or the relevant authorities and do not form part of any offer or contract. These are not drawn to scale and are for the purpose of visual presentation only.



HIGHPARKRESIDENCES

3-BEDROOM DELUXE

TYPE 3D1-PH

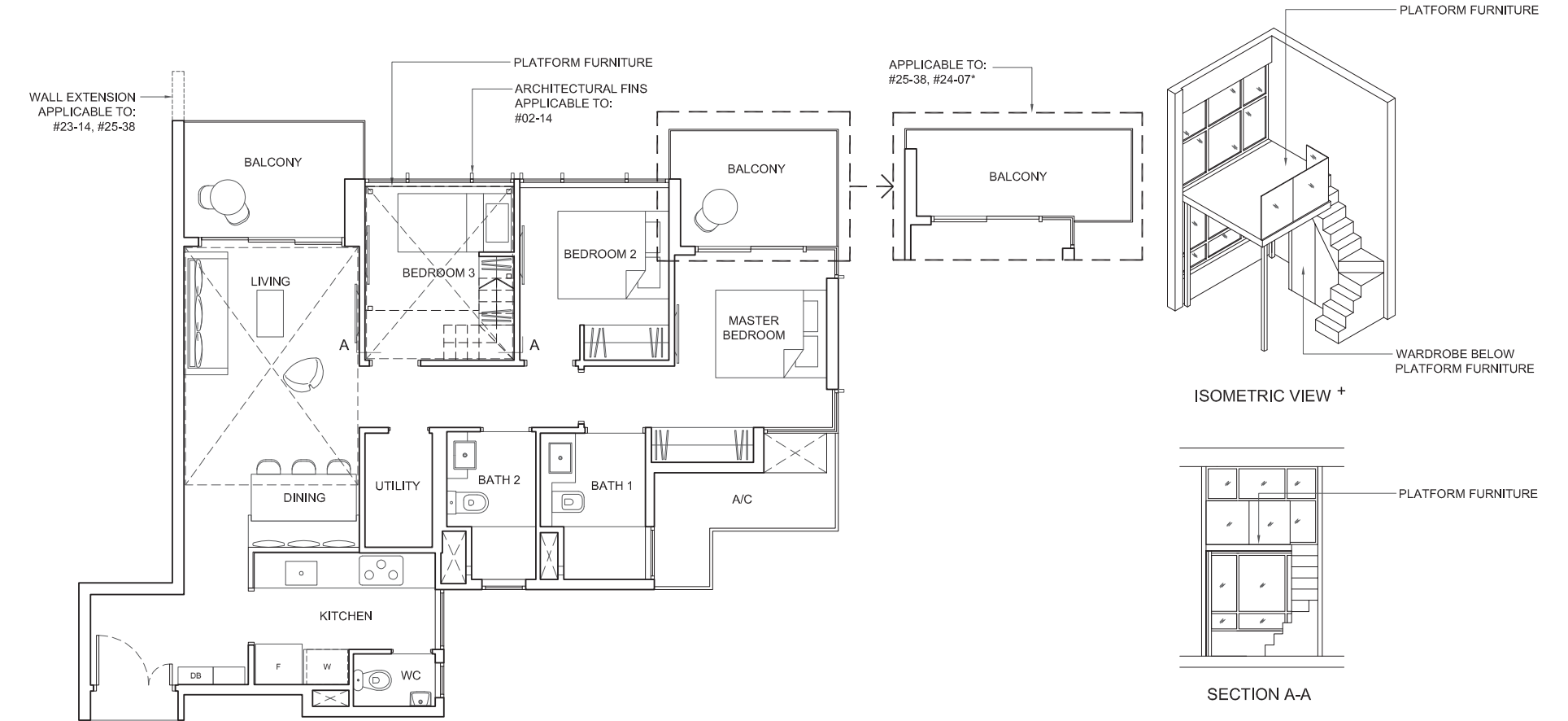
Area: 115 sq m (include 4 sq m A/C LEDGE, 12 sq m BALCONY)
(include 22 sq m VOID)

Unit(s): #23-14
#25-38

TYPE 3D1-aPH

Area: 115 sq m (include 4 sq m A/C LEDGE, 12 sq m BALCONY)
(include 22 sq m VOID)

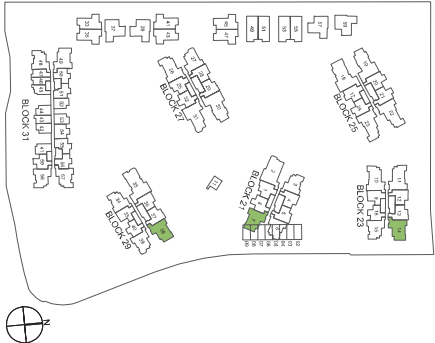
Unit(s): #24-07*



NOTE:

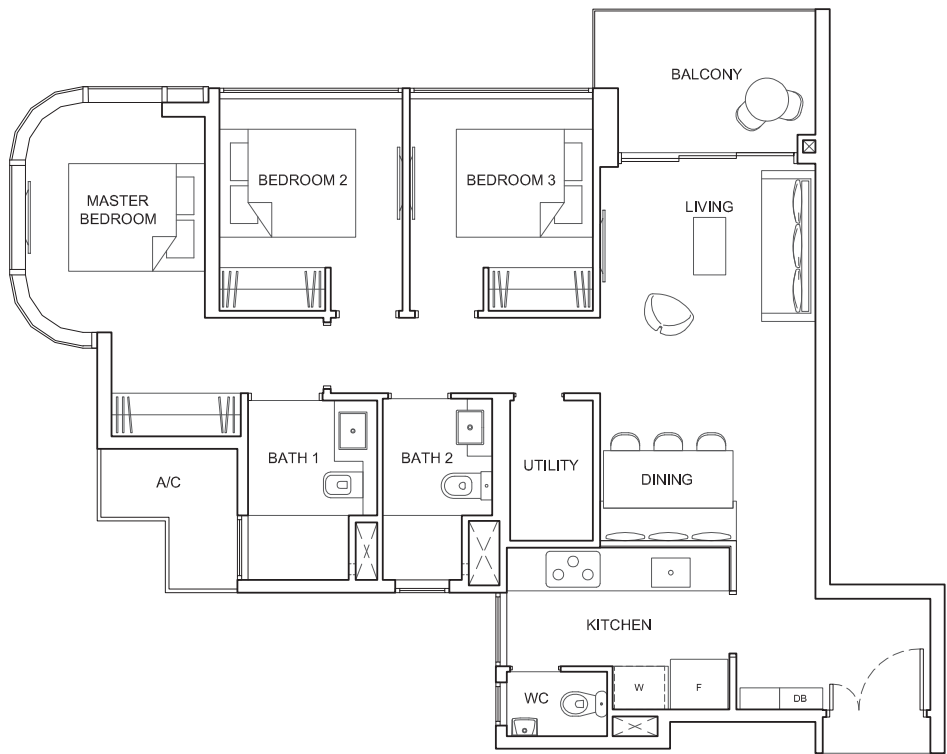
* mirror image
+Isometric views have excluded railing drawings

Plans are subject to change/amendments as may be required and/or approved by the Developer and/or the relevant authorities and do not form part of any offer or contract. These are not drawn to scale and are for the purpose of visual presentation only.



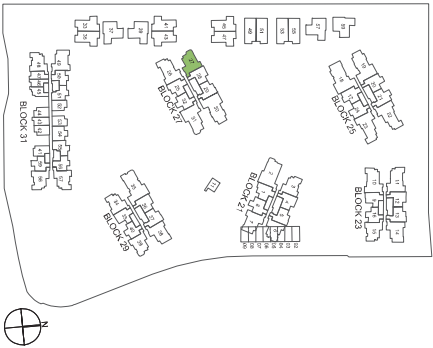
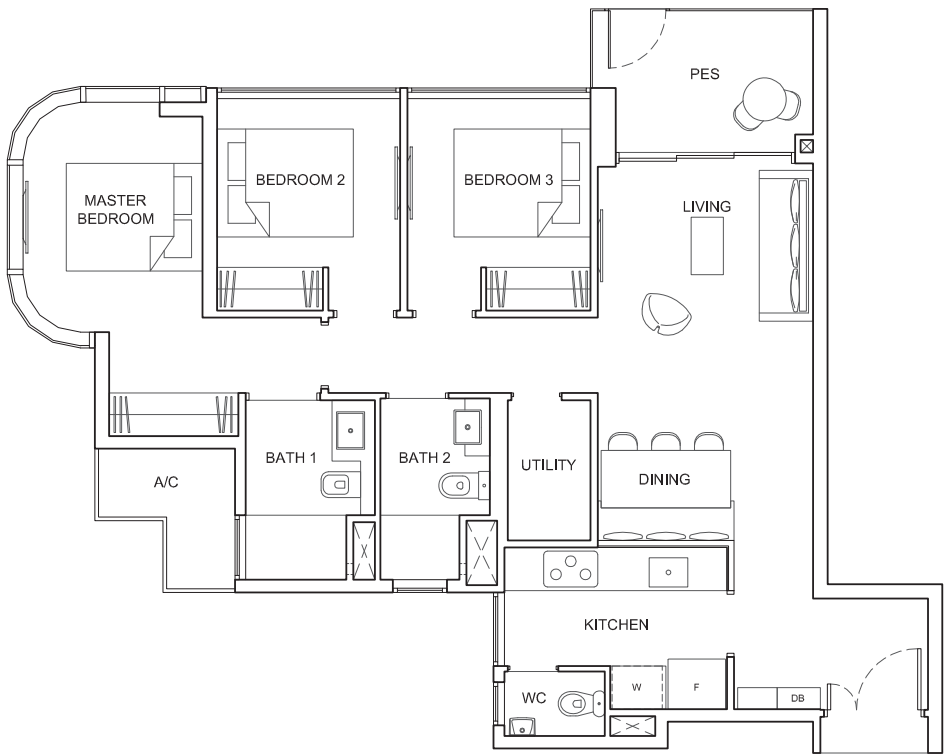
TYPE 3D2

Area: 88 sq m (include 3 sq m A/C LEDGE, 6 sq m BALCONY)
Unit(s): #03-27 TO #24-27



TYPE 3D2-P

Area: 88 sq m (include 3 sq m A/C LEDGE, 6 sq m PES)
Unit(s): #02-27

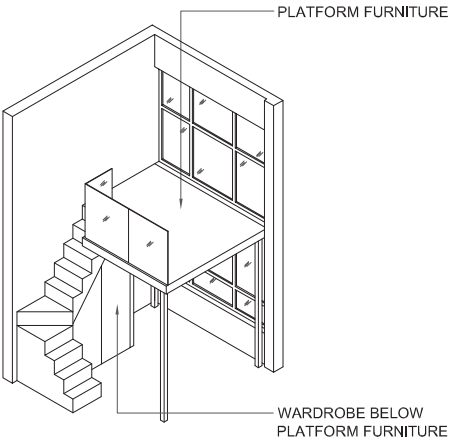
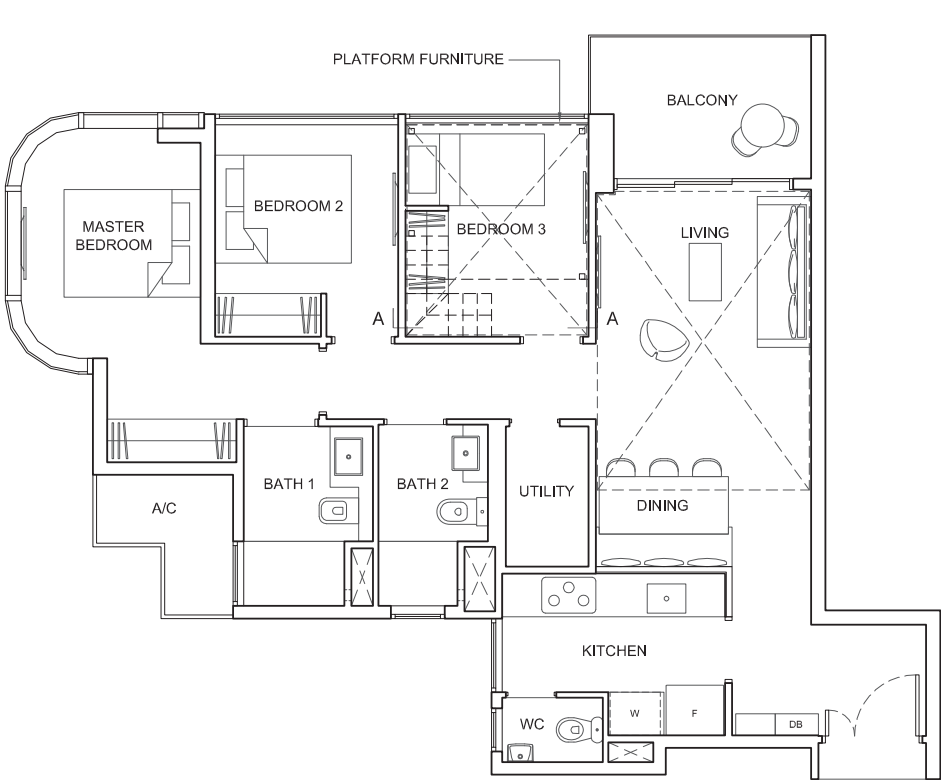


Plans are subject to change/amendments as may be required and/or approved by the Developer and/or the relevant authorities and do not form part of any offer or contract. These are not drawn to scale and are for the purpose of visual presentation only.

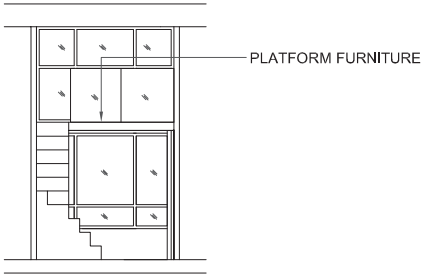
TYPE 3D2-PH

Area: 110 sq m (include 3 sq m A/C LEDGE, 6 sq m BALCONY)
(include 22 sq m VOID)

Unit(s): #25-27



ISOMETRIC VIEW +

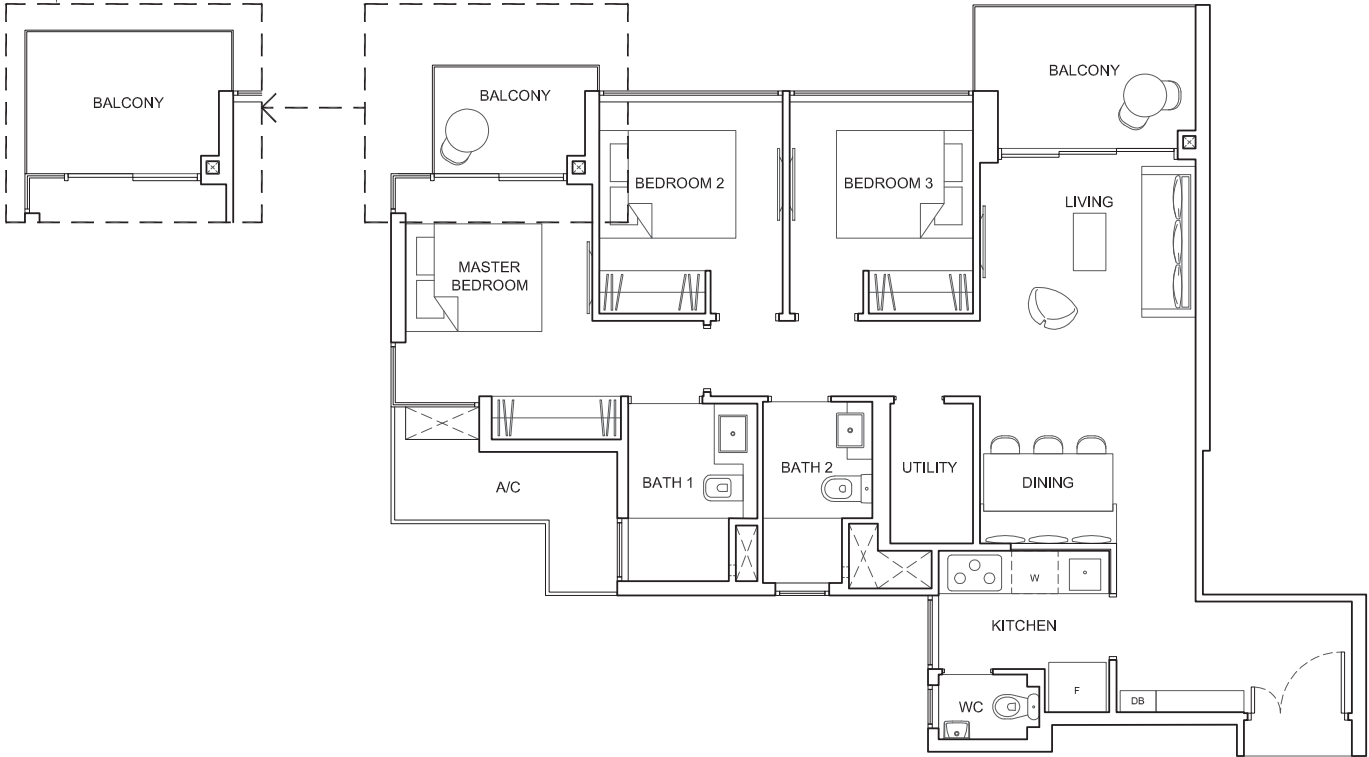


SECTION A-A

TYPE 3D3

Area: 90 sq m (include 5 sq m A/C LEDGE, 10 sq m BALCONY)
Unit(s): #03-49 TO #04-49, #08-49 TO #12-49, #16-49 TO #20-49, #24-49

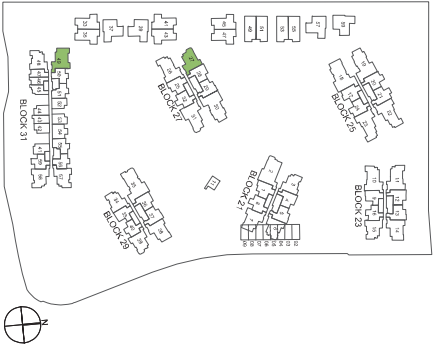
APPLICABLE TO
TYPE 3D3-B



NOTE:

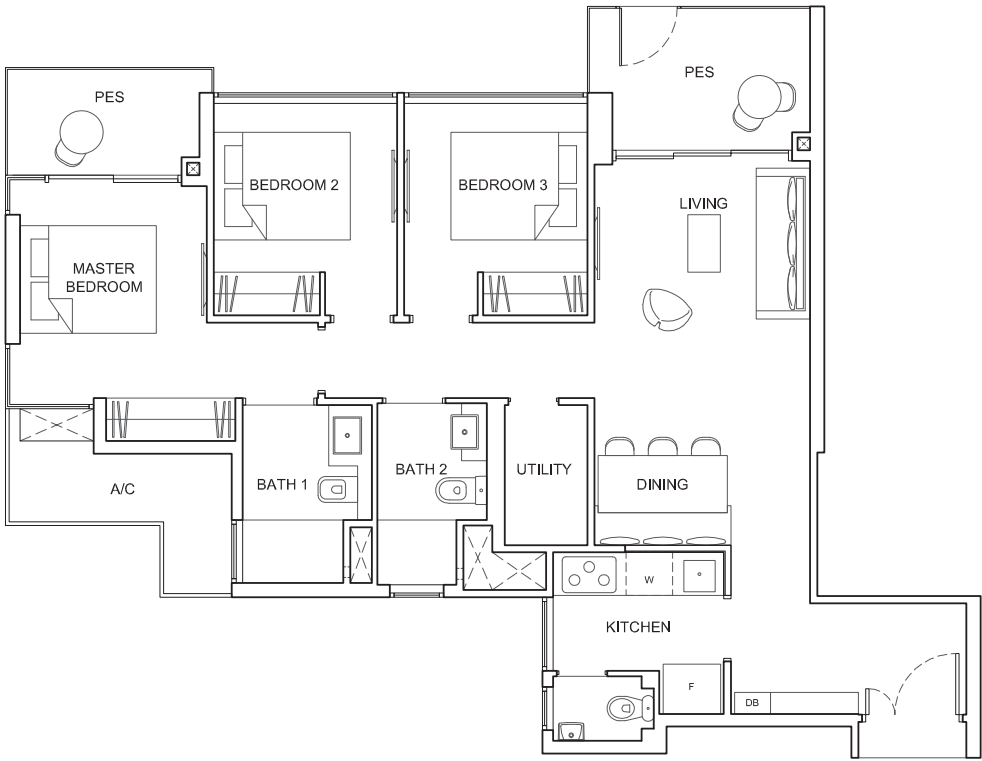
+ Isometric views have excluded railing drawings

Plans are subject to change/amendments as may be required and/or approved by the Developer and/or the relevant authorities and do not form part of any offer or contract. These are not drawn to scale and are for the purpose of visual presentation only.



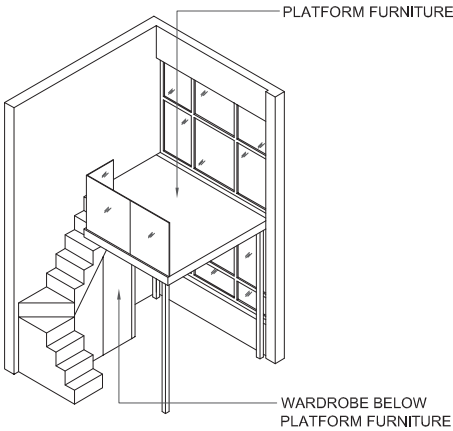
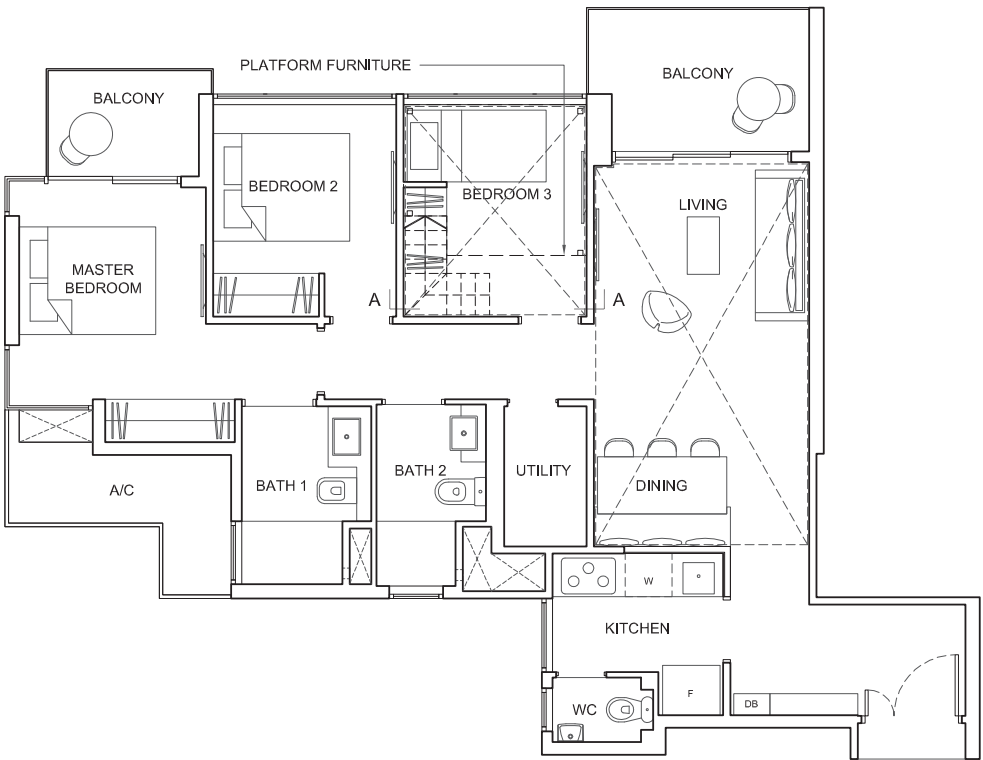
TYPE 3D3-P

Area: 91 sq m (include 5 sq m A/C LEDGE, 11 sq m PES)
Unit(s): #02-49

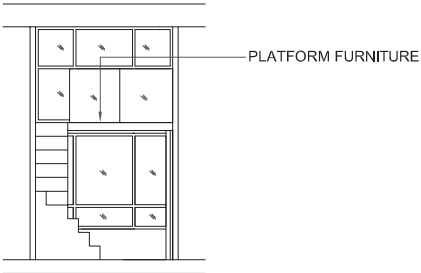


TYPE 3D3-PH

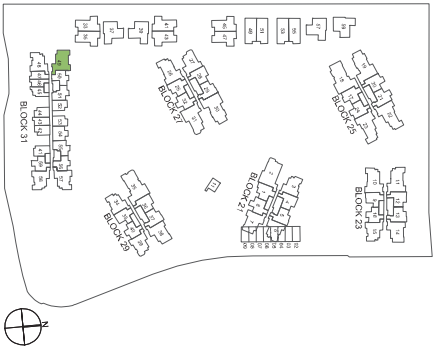
Area: 116 sq m (include 5 sq m A/C LEDGE, 10 sq m BALCONY)
(include 26 sq m VOID)
Unit(s): #25-49



ISOMETRIC VIEW +



SECTION A-A



NOTE:

+ Isometric views have excluded railing drawings

Plans are subject to change/amendments as may be required and/or approved by the Developer and/or the relevant authorities and do not form part of any offer or contract. These are not drawn to scale and are for the purpose of visual presentation only.