

### TYPE 5A

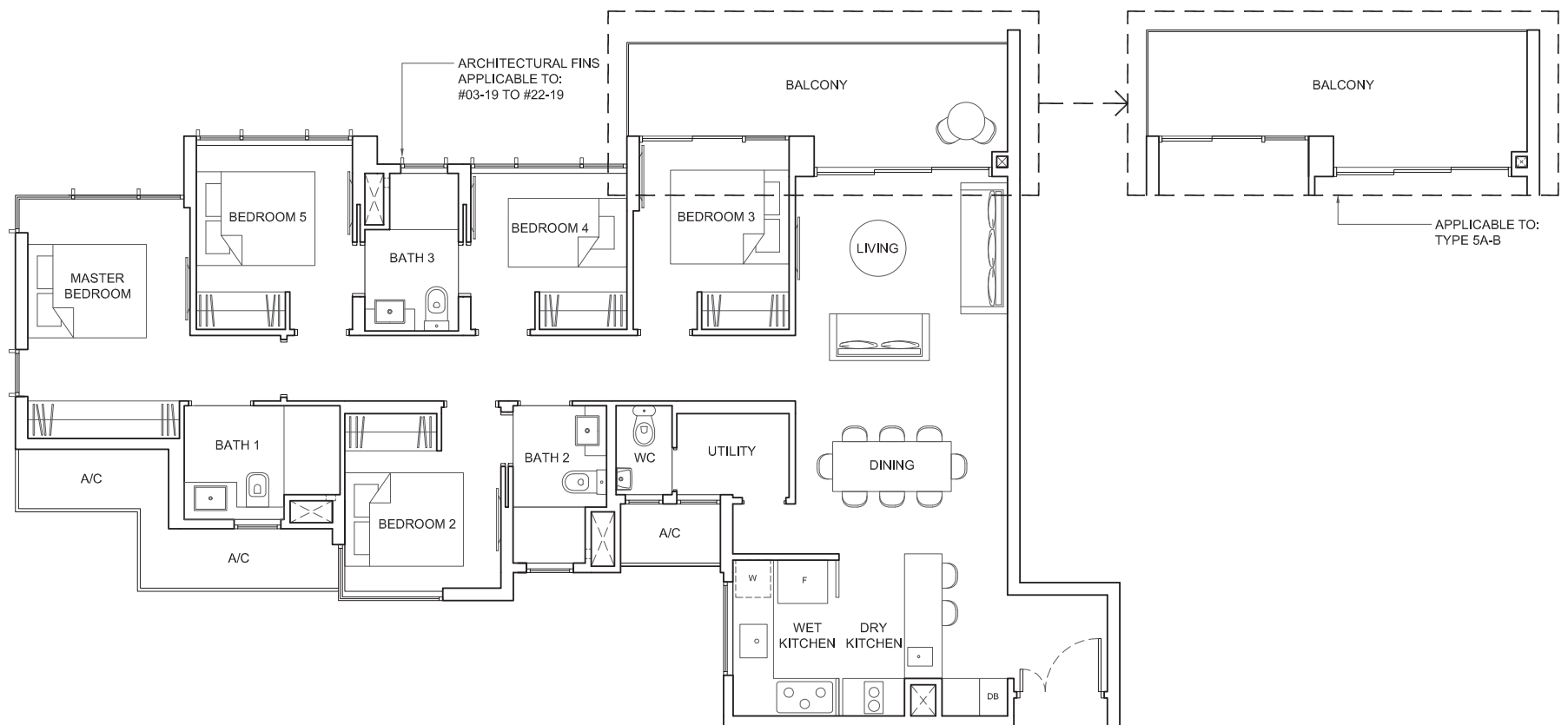
Area: 129 sq m (include 8 sq m A/C LEDGE, 11 sq m BALCONY)

Unit(s): #03-19 TO #07-19  
#03-30\* TO #07-30\*

### TYPE 5A-B

Area: 130 sq m (include 8 sq m A/C LEDGE, 12 sq m BALCONY)

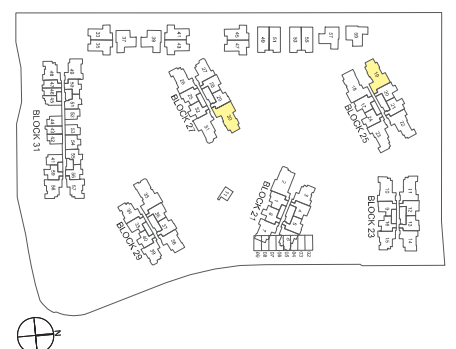
Unit(s): #08-19 TO #22-19  
#08-30\* TO #24-30\*



### NOTE:

\* mirror image

Plans are subject to change/amendments as may be required and/or approved by the Developer and/or the relevant authorities and do not form part of any offer or contract. These are not drawn to scale and are for the purpose of visual presentation only.

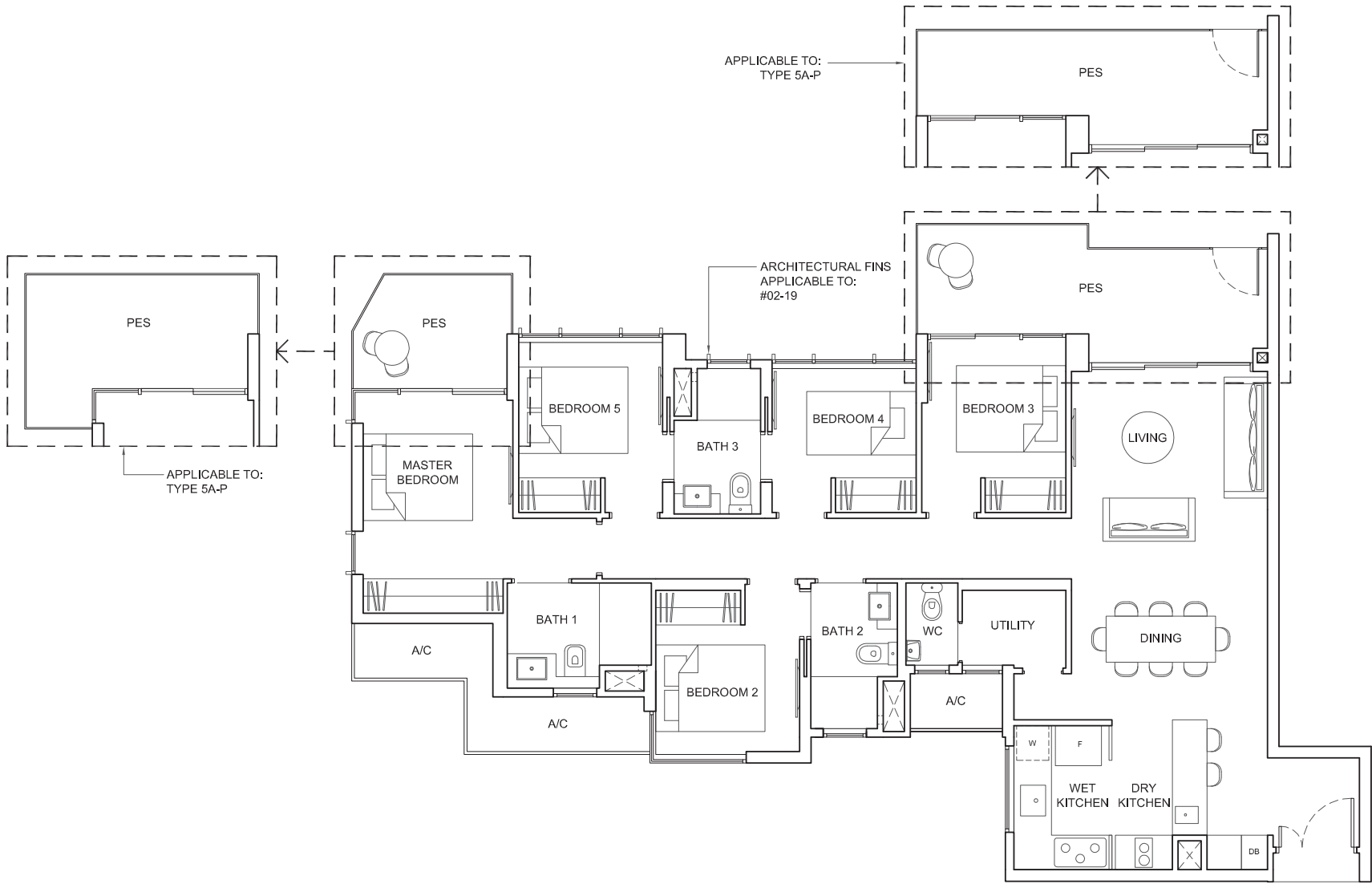


TYPE 5A-P1

Area: 136 sq m (include 8 sq m A/C LEDGE, 18 sq m PES)  
Unit(s): #02-19

TYPE 5A-P

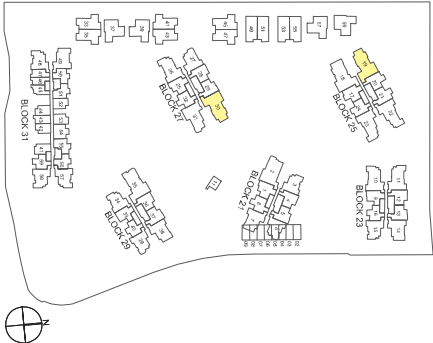
Area: 138 sq m (include 8 sq m A/C LEDGE, 20 sq m PES)  
Unit(s): #02-30\*



NOTE:

\* mirror image

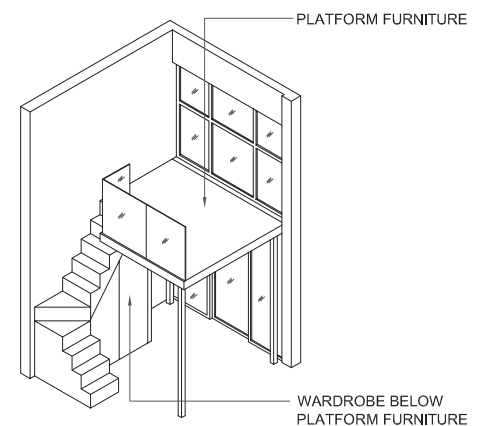
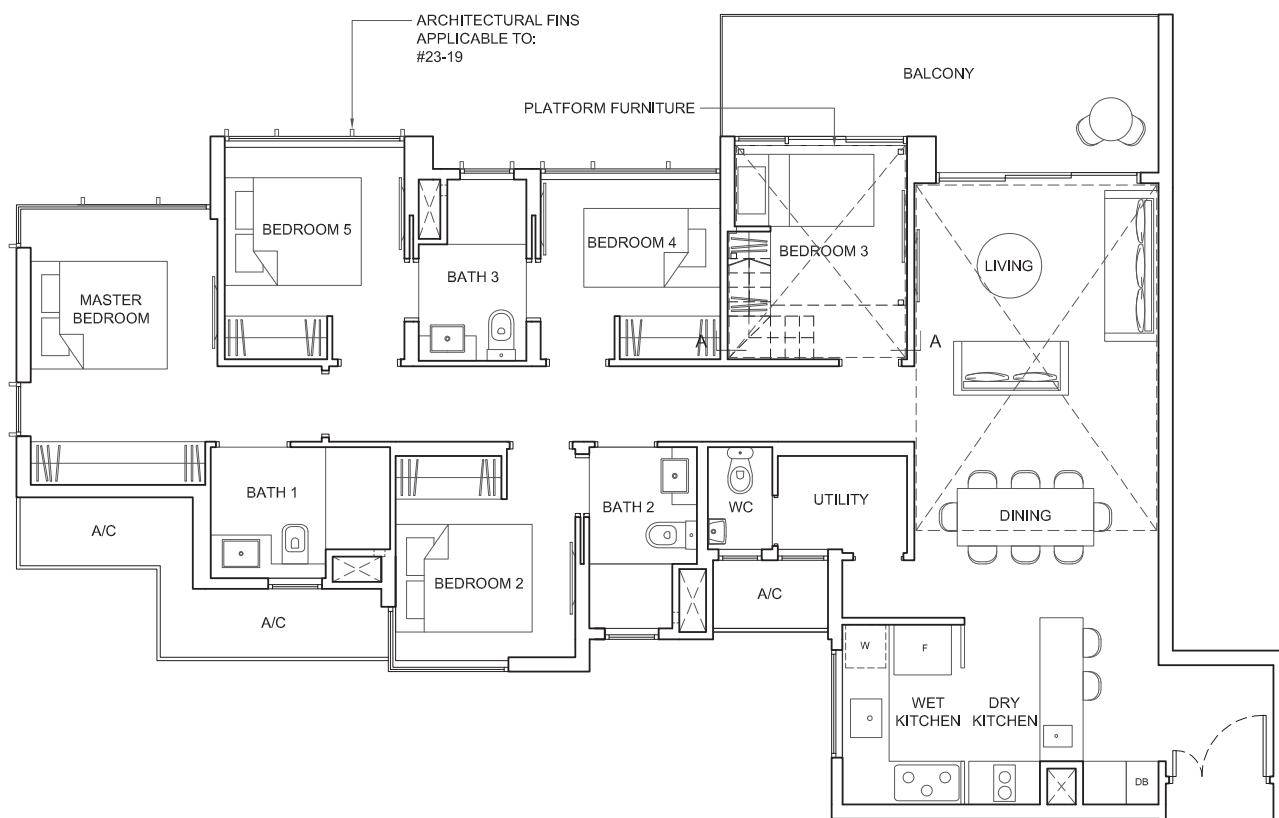
Plans are subject to change/amendments as may be required and/or approved by the Developer and/or the relevant authorities and do not form part of any offer or contract. These are not drawn to scale and are for the purpose of visual presentation only.



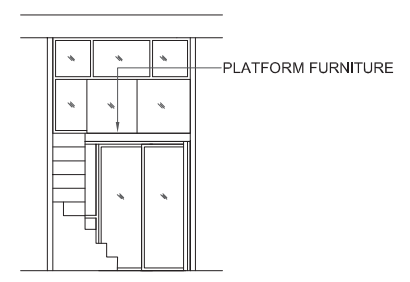
### TYPE 5A-PH

Area: 156 sq m (include 8 sq m A/C LEDGE, 12 sq m BALCONY)  
(include 26 sq m VOID)

Unit(s): #23-19  
#25-30\*



ISOMETRIC VIEW +

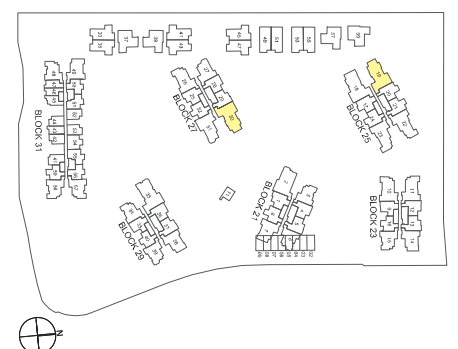


SECTION A-A

### NOTE:

- \* mirror image
- +Isometric views have excluded railing drawings

Plans are subject to change/amendments as may be required and/or approved by the Developer and/or the relevant authorities and do not form part of any offer or contract. These are not drawn to scale and are for the purpose of visual presentation only.



HIGHPARKRESIDENCES

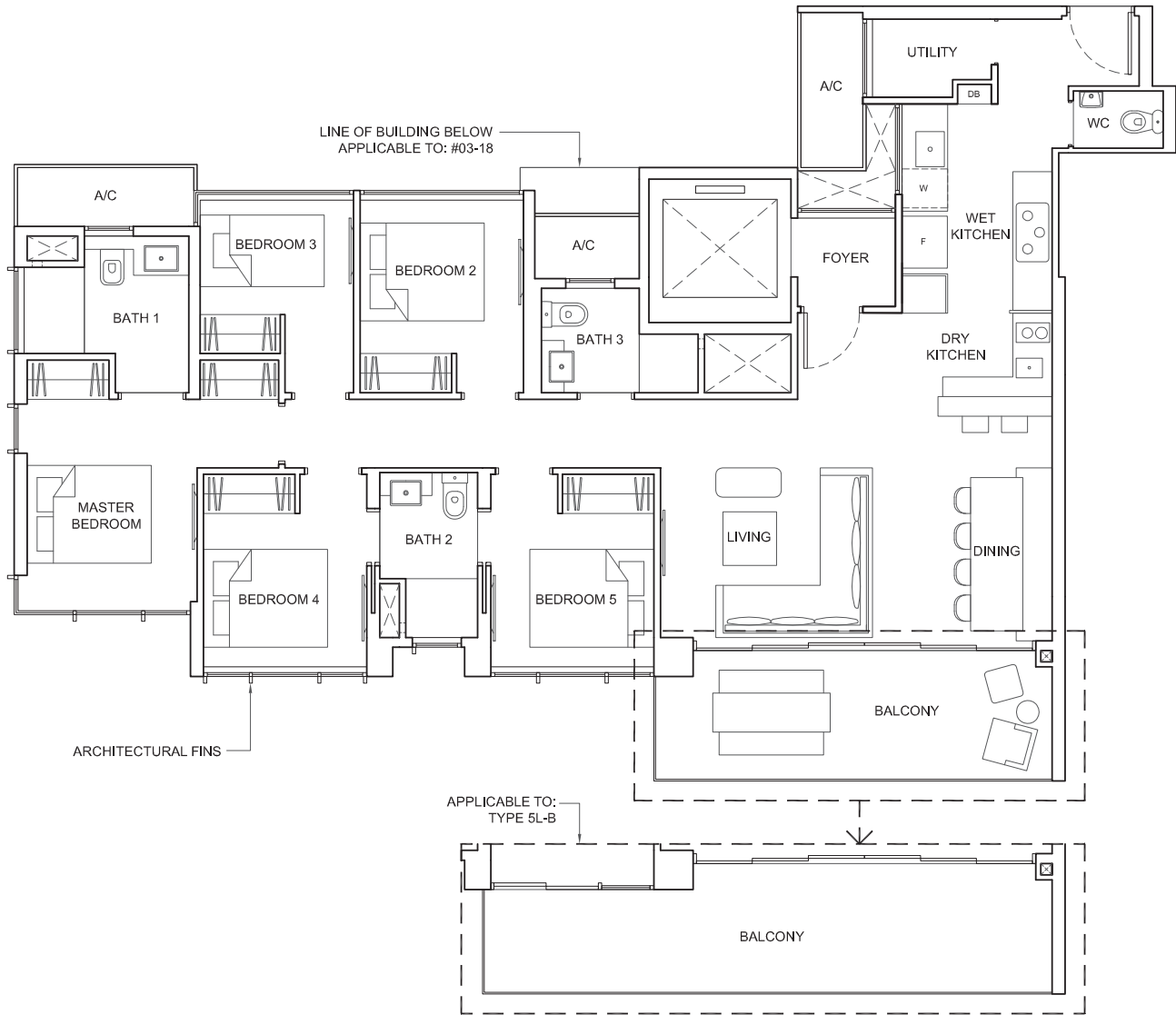
5-BEDROOM LUXURY (WITH PRIVATE LIFT)

TYPE 5L

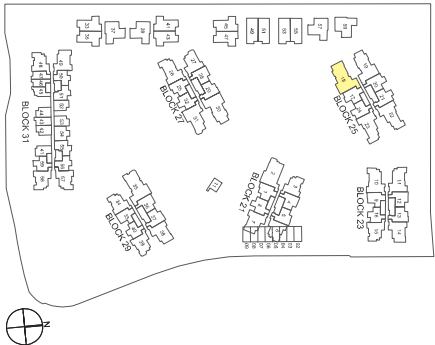
Area: 132 sq m (include 7 sq m A/C LEDGE, 13 sq m BALCONY)  
Unit(s): #03-18 TO #20-18

TYPE 5L-B

Area: 135 sq m (include 7 sq m A/C LEDGE, 17 sq m BALCONY)  
Unit(s): #21-18 TO #22-18



Plans are subject to change/amendments as may be required and/or approved by the Developer and/or the relevant authorities and do not form part of any offer or contract. These are not drawn to scale and are for the purpose of visual presentation only.

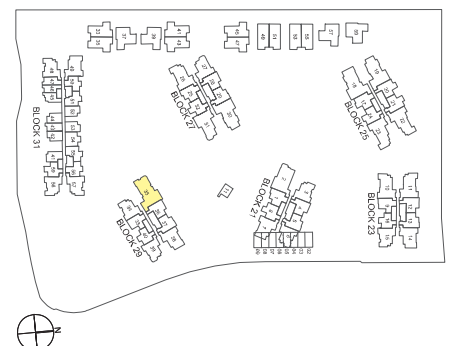
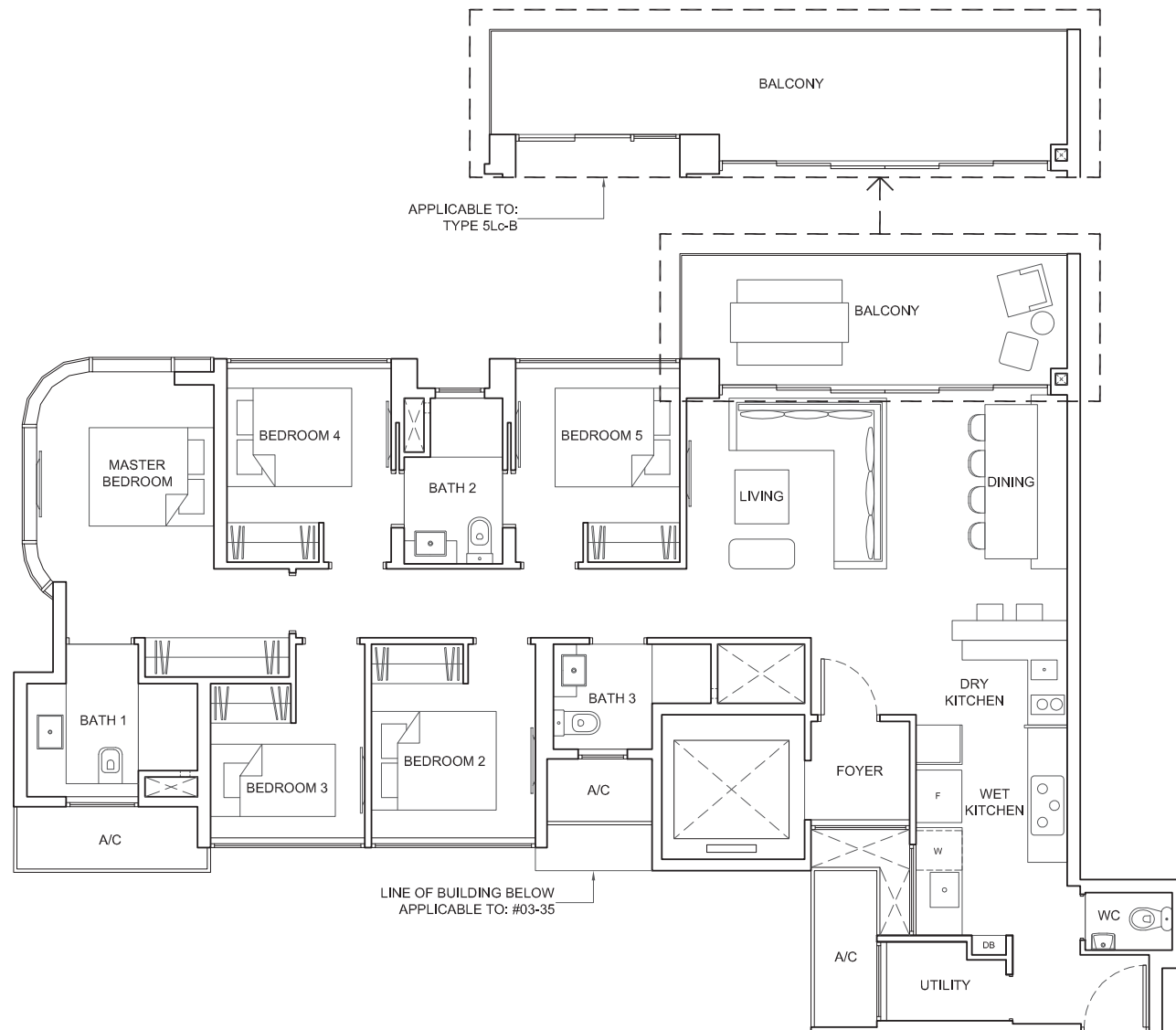


### TYPE 5Lc

Area: 134 sq m (include 8 sq m A/C LEDGE, 12 sq m BALCONY)  
Unit(s): #03-35 TO #22-35

### TYPE 5Lc-B

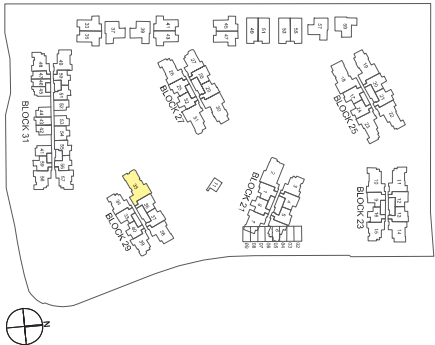
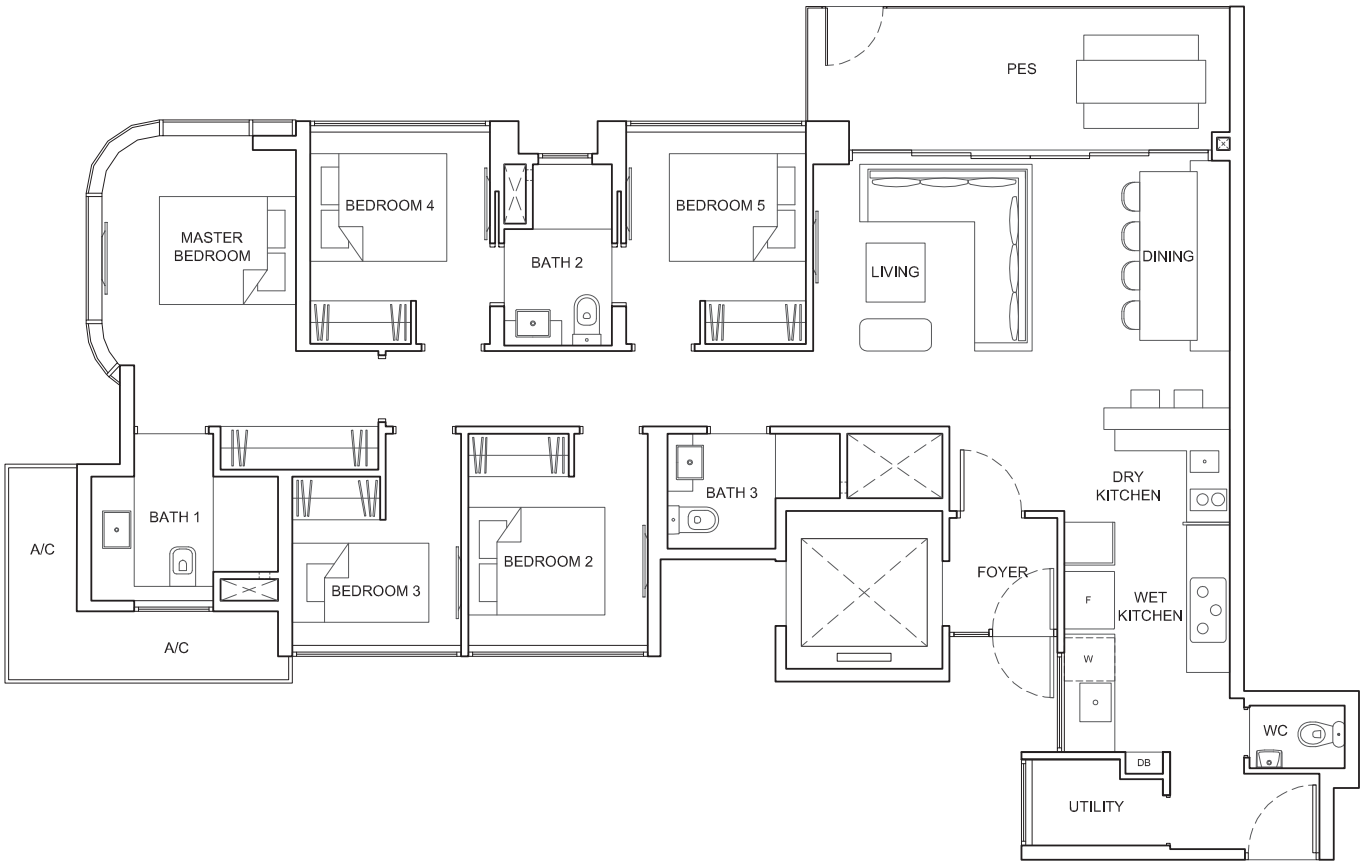
Area: 138 sq m (include 8 sq m A/C LEDGE, 17 sq m BALCONY)  
Unit(s): #23-35 TO #24-35



HIGHPARKRESIDENCES

5-BEDROOM LUXURY (WITH PRIVATE LIFT)

**TYPE 5Lc-P**  
Area: 132 sq m (include 6 sq m A/C LEDGE, 12 sq m PES)  
Unit(s): #02-35

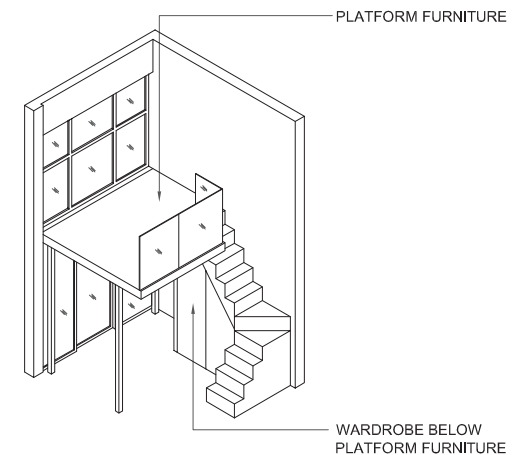
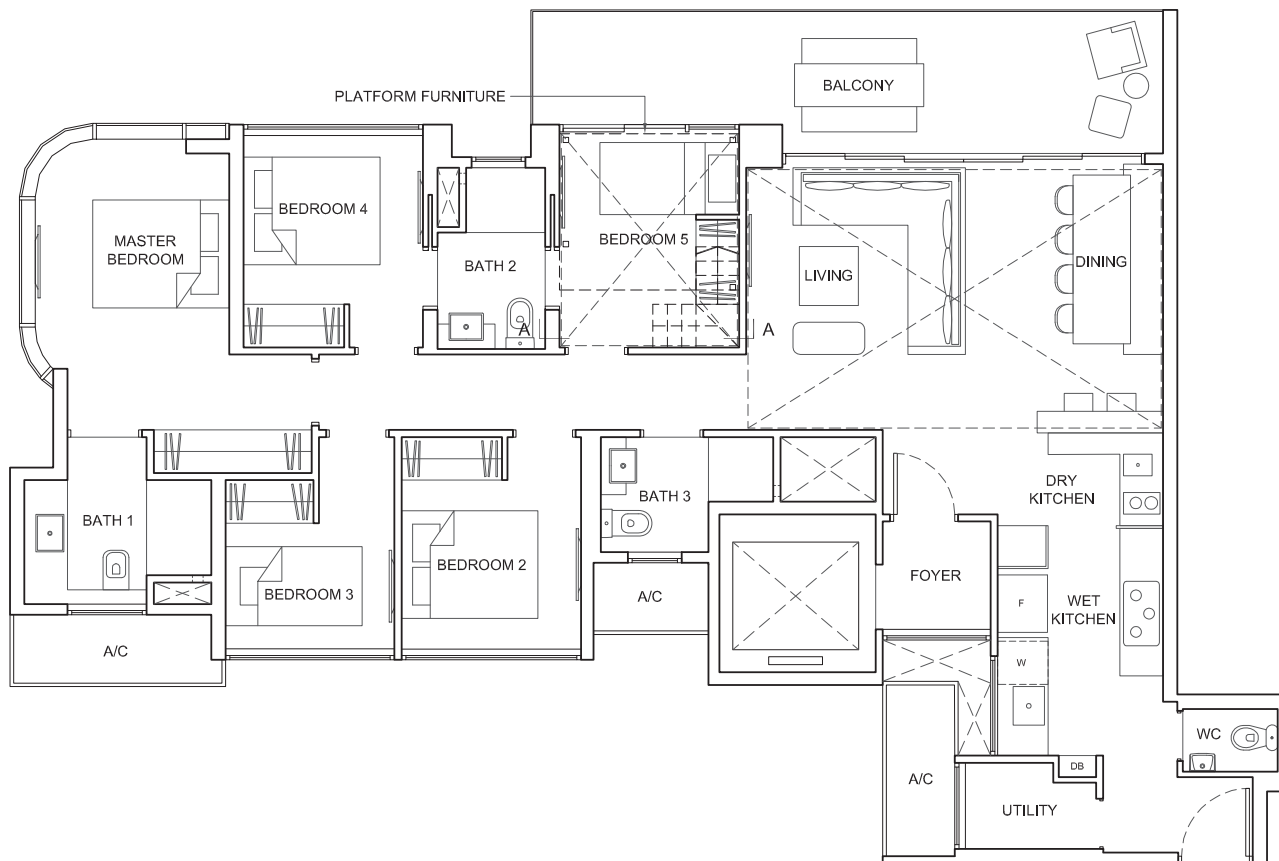


Plans are subject to change/amendments as may be required and/or approved by the Developer and/or the relevant authorities and do not form part of any offer or contract. These are not drawn to scale and are for the purpose of visual presentation only.

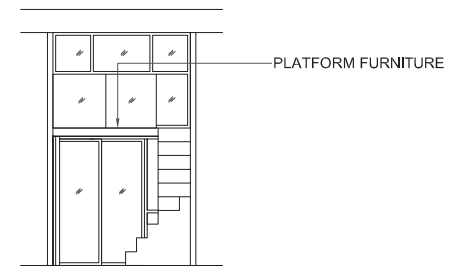
### TYPE 5Lc-PH

Area: 169 sq m (include 8 sq m A/C LEDGE, 17 sq m BALCONY)  
(include 31 sq m VOID)

Unit(s): #25-35



ISOMETRIC VIEW +

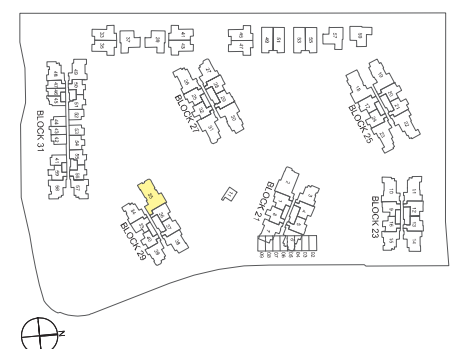


SECTION A-A

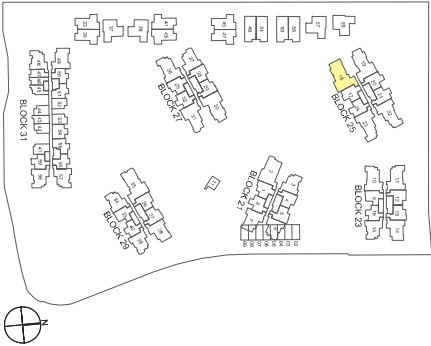
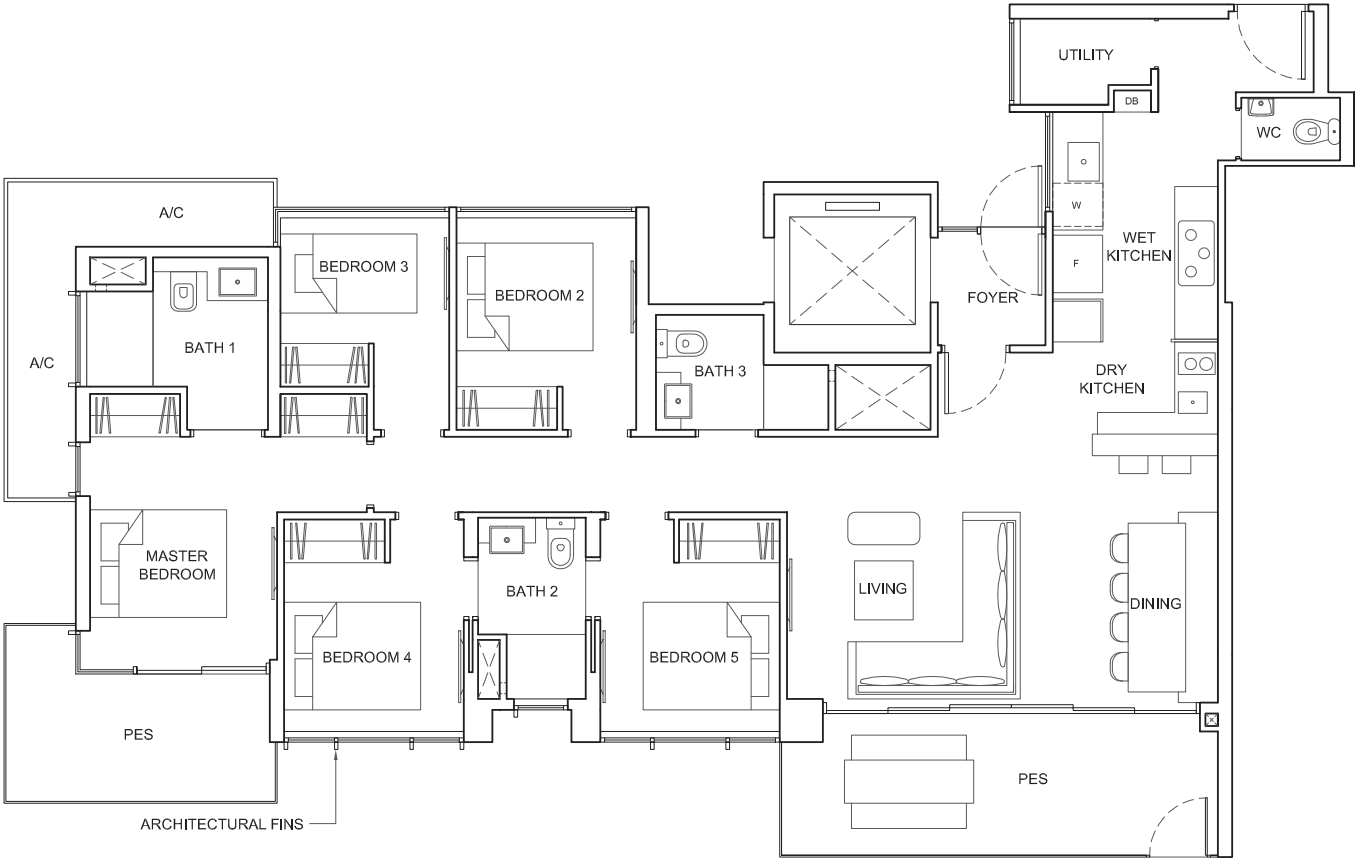
### NOTE:

+ Isometric views have excluded railing drawings

Plans are subject to change/amendments as may be required and/or approved by the Developer and/or the relevant authorities and do not form part of any offer or contract. These are not drawn to scale and are for the purpose of visual presentation only.



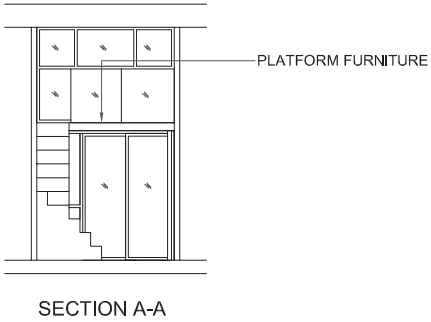
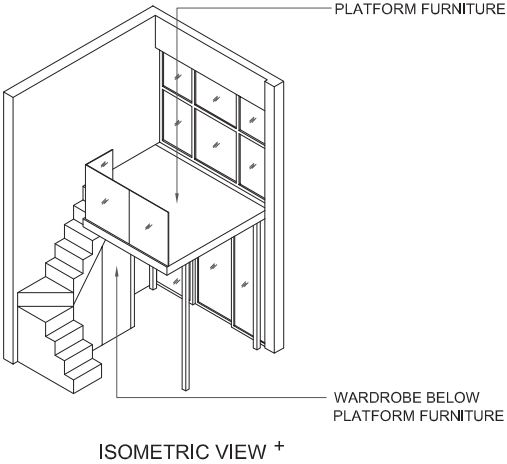
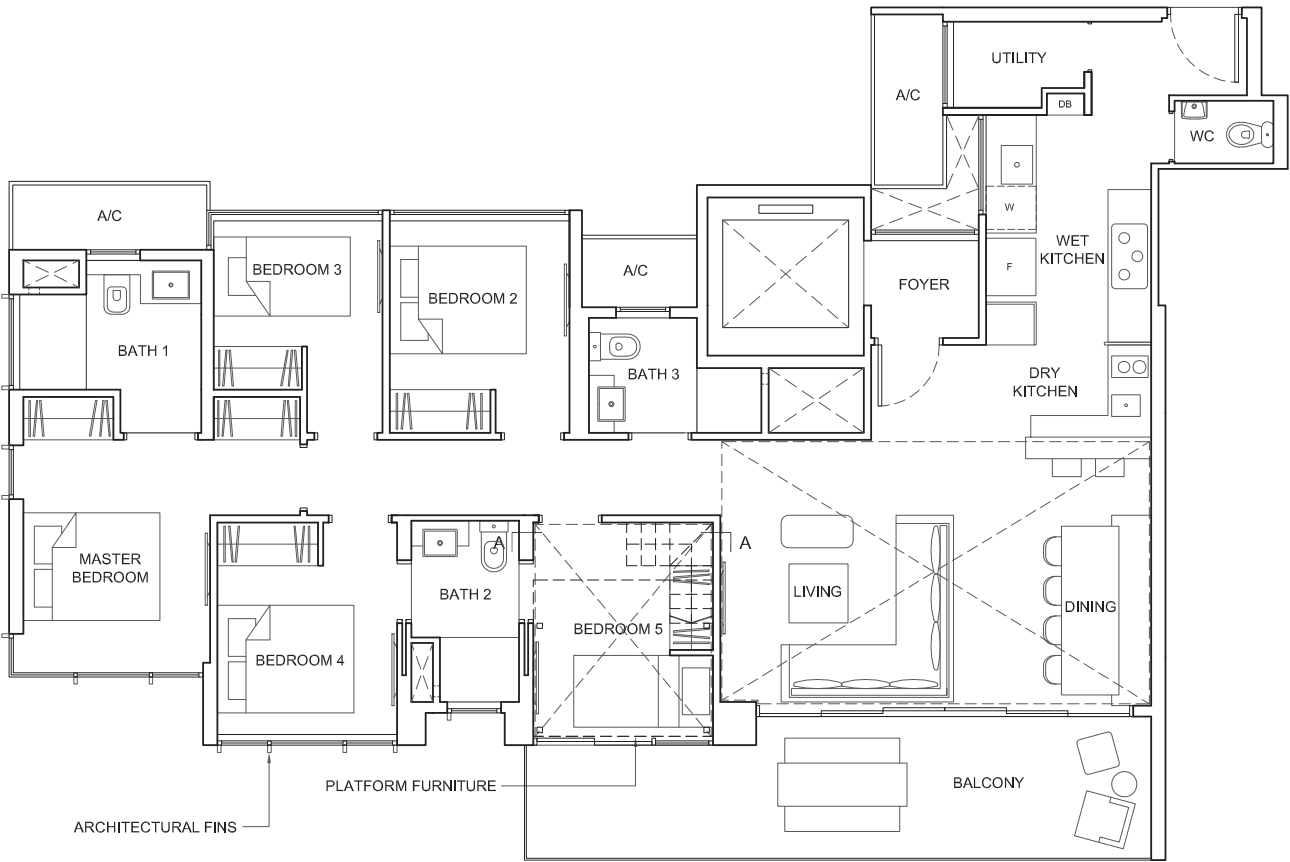
**TYPE 5L-P**  
Area: 139 sq m (include 7 sq m A/C LEDGE, 20 sq m PES)  
Unit(s): #02-18



Plans are subject to change/amendments as may be required and/or approved by the Developer and/or the relevant authorities and do not form part of any offer or contract. These are not drawn to scale and are for the purpose of visual presentation only.



**TYPE 5L-PH**  
Area: 167 sq m (include 7 sq m A/C LEDGE, 17 sq m BALCONY)  
(Include 32 sq m void)  
Unit(s): #23-18



**NOTE:**

+ Isometric views have excluded railing drawings

Plans are subject to change/amendments as may be required and/or approved by the Developer and/or the relevant authorities and do not form part of any offer or contract. These are not drawn to scale and are for the purpose of visual presentation only.

