



# PARC BOTANNTA

A HOME WITH NATURE

FLOOR PLANS



# “Open up to a whole new point of view.”

Be enthralled when you arrive home to your personal sanctuary where delightful views of a sea of green and blue await you no matter which level you are on.

## A HOME WITH VANTAGE VIEWS



For Illustration Only

Straits Facing View



Artist's Impression

Central Pool Facing View



Artist's Impression

Park Facing View



# Welcome To A World Of Infinitely Cherished Moments

Indulge in the myriad of lifestyle facilities set on our lush sprawling grounds.

- 1

Contour Garden
- 2

Adventure Play
- 3

Musical Play Panel
- 4

Trampoline
- 5

Flower Drums
- 6

A-maze-zing Garden
- 7

Putting Green
- 8

Function Room
- 9

Water Wall
- 10

Family Pavilion
- 11

Arrival Lounge
- 12

Water Feature
- 13

Management Office
- 14

Party Room
- 15

Evergreen Boulevard with Spinning Chairs
- 16

Fitness Clubhouse
  - Gym
  - Yoga Deck
  - Arum Fern Garden
  - Changing Room
- 17

Outdoor Fitness
- 18

Floral Trellis
- 19

Family Swing
- 20

Picnic Lawn
- 21

Jasmine Aroma Hammock
- 22

Shrubbery Discovery Garden
- 23

Community Garden
- 24

Family Cabanas
- 25

Kids' Play Pool
- 26

Dancing Fountain
- 27

Rainbow Kids' Spa
- 28

Kids' Wading Pool
- 29

Aqua Deck
- 30

Jacuzzi Alcove
- 31

Pool Deck
- 32

50m Lap Pool
- 33

Water Bridge
- 34

Bosque Garden
- 35

Floating BBQ Pavilion
- 36

Tennis Court
- 37

Cyathea Fern Walk
- 38

Aquatic Pets' Pavilion
- 39

Chill-Out Pavilion
- 40

Reading Pavilion
- 41

Balinese Pavilion
- 42

The Garden Gate
- 43

Misty Fern Walk
- 44

Secret Garden
- 45

Family BBQ Pavilion
- 46

Grass Court with Chess Set

47

Side Gate

48

Child Care Centre Playground

49

Nectar Trail

50

Jogging Track

51

Bin Centre

52

Substation

53

Transformer Room

54

Guard House

55

Main Entrance Drop Off

56

Child Care Centre

## SITE PLAN





# Unit Distribution

## BLOCK 10

	01	02	03	04	05	06	07	08	09
22	1BR S2 #22-01	2BR S-H1 #22-02	3BR P1-H #22-03	2BR P1-H #22-04	2BR P1-H #22-05	5BR H #22-06	3BR C1-H1 #22-07	1BR 1 #22-08	1BR S1 #22-09
21	1BR S2 #21-01	2BR Sb #21-02	3BR P1b #21-03	2BR P1 #21-04	2BR P1 #21-05	5BRb #21-06	3BR C1b #21-07	1BR 1 #21-08	1BR S1 #21-09
20	1BR S2 #20-01	2BR Sb #20-02	3BR P1b #20-03	2BR P1 #20-04	2BR P1 #20-05	5BRb #20-06	3BR C1b #20-07	1BR 1 #20-08	1BR S1 #20-09
19	1BR S2 #19-01	2BR Sb #19-02	3BR P1b #19-03	2BR P1 #19-04	2BR P1 #19-05	5BRb #19-06	3BR C1b #19-07	1BR 1 #19-08	1BR S1 #19-09
18	1BR S2 #18-01	2BR Sb #18-02	3BR P1b #18-03	2BR P1 #18-04	2BR P1 #18-05	5BRb #18-06	3BR C1b #18-07	1BR 1 #18-08	1BR S1 #18-09
17	1BR S2 #17-01	2BR Sb #17-02	3BR P1b #17-03	2BR P1 #17-04	2BR P1 #17-05	5BRb #17-06	3BR C1b #17-07	1BR 1 #17-08	1BR S1 #17-09
16	1BR S2 #16-01	2BR Sb #16-02	3BR P1b #16-03	2BR P1 #16-04	2BR P1 #16-05	5BRb #16-06	3BR C1b #16-07	1BR 1 #16-08	1BR S1 #16-09
15	1BR S2 #15-01	2BR Sb #15-02	3BR P1b #15-03	2BR P1 #15-04	2BR P1 #15-05	5BRb #15-06	3BR C1b #15-07	1BR 1 #15-08	1BR S1 #15-09
14	1BR S2 #14-01	2BR Sb #14-02	3BR P1b #14-03	2BR P1 #14-04	2BR P1 #14-05	5BRb #14-06	3BR C1b #14-07	1BR 1 #14-08	1BR S1 #14-09
13	1BR S2 #13-01	2BR Sb #13-02	3BR P1b #13-03	2BR P1 #13-04	2BR P1 #13-05	5BRb #13-06	3BR C1b #13-07	1BR 1 #13-08	1BR S1 #13-09
12	1BR S2 #12-01	2BR Sb #12-02	3BR P1b #12-03	2BR P1 #12-04	2BR P1 #12-05	5BRb #12-06	3BR C1b #12-07	1BR 1 #12-08	1BR S1 #12-09
11	1BR S2 #11-01	2BR Sb #11-02	3BR P1b #11-03	2BR P1 #11-04	2BR P1 #11-05	5BRb #11-06	3BR C1b #11-07	1BR 1 #11-08	1BR S1 #11-09
10	1BR S2 #10-01	2BR Sb #10-02	3BR P1b #10-03	2BR P1 #10-04	2BR P1 #10-05	5BRb #10-06	3BR C1b #10-07	1BR 1 #10-08	1BR S1 #10-09
9	1BR S2 #09-01	2BR Sb #09-02	3BR P1b #09-03	2BR P1 #09-04	2BR P1 #09-05	5BRb #09-06	3BR C1b #09-07	1BR 1 #09-08	1BR S1 #09-09
8	1BR S2 #08-01	2BR Sb #08-02	3BR P1b #08-03	2BR P1 #08-04	2BR P1 #08-05	5BRb #08-06	3BR C1b #08-07	1BR 1 #08-08	1BR S1 #08-09
7	1BR S2 #07-01	2BR Sb #07-02	3BR P1b #07-03	2BR P1 #07-04	2BR P1 #07-05	5BRb #07-06	3BR C1b #07-07	1BR 1 #07-08	1BR S1 #07-09
6	1BR S2 #06-01	2BR Sb #06-02	3BR P1b #06-03	2BR P1 #06-04	2BR P1 #06-05	5BRb #06-06	3BR C1b #06-07	1BR 1 #06-08	1BR S1 #06-09
5	1BR S2 #05-01	2BR Sa #05-02	3BR P1a #05-03	2BR P1 #05-04	2BR P1 #05-05	5BRa #05-06	3BR C1a #05-07	1BR 1 #05-08	1BR S1 #05-09
4	1BR S2 #04-01	2BR Sa #04-02	3BR P1a #04-03	2BR P1 #04-04	2BR P1 #04-05	5BRa #04-06	3BR C1a #04-07	1BR 1 #04-08	1BR S1 #04-09
3	1BR S2 #03-01	2BR Sa #03-02	3BR P1a #03-03	2BR P1 #03-04	2BR P1 #03-05	5BRa #03-06	3BR C1a #03-07	1BR 1 #03-08	1BR S1 #03-09
2	1BR S2 #02-01	2BR Sa #02-02	3BR P1-P #02-03	2BR P1-P #02-04	1BR 2-P #02-05	5BR P #02-06	3BR C1a #02-07	1BR 1 #02-08	1BR S1 #02-09

1 Bedroom2 Bedroom3 Bedroom4 Bedroom5 Bedroom

## BLOCK 12

	10	11	12	13	14	15	16	17	18
22	1BR S2 #22-10	2BR S-H2 #22-11	3BR C2-H #22-12	2BR P2-H #22-13	2BR P1-H #22-14	3BR P1-H #22-15	3BR C1-H2 #22-16	1BR 1 #22-17	1BR S1 #22-18
21	1BR S2 #21-10	2BR Sb #21-11	3BR C2b #21-12	2BR P2 #21-13	2BR P1 #21-14	3BR P1b #21-15	3BR C1b #21-16	1BR 1 #21-17	1BR S1 #21-18
20	1BR S2 #20-10	2BR Sb #20-11	3BR C2b #20-12	2BR P2 #20-13	2BR P1 #20-14	3BR P1b #20-15	3BR C1b #20-16	1BR 1 #20-17	1BR S1 #20-18
19	1BR S2 #19-10	2BR Sb #19-11	3BR C2b #19-12	2BR P2 #19-13	2BR P1 #19-14	3BR P1b #19-15	3BR C1b #19-16	1BR 1 #19-17	1BR S1 #19-18
18	1BR S2 #18-10	2BR Sb #18-11	3BR C2b #18-12	2BR P2 #18-13	2BR P1 #18-14	3BR P1b #18-15	3BR C1b #18-16	1BR 1 #18-17	1BR S1 #18-18
17	1BR S2 #17-10	2BR Sb #17-11	3BR C2b #17-12	2BR P2 #17-13	2BR P1 #17-14	3BR P1b #17-15	3BR C1b #17-16	1BR 1 #17-17	1BR S1 #17-18
16	1BR S2 #16-10	2BR Sb #16-11	3BR C2b #16-12	2BR P2 #16-13	2BR P1 #16-14	3BR P1b #16-15	3BR C1b #16-16	1BR 1 #16-17	1BR S1 #16-18
15	1BR S2 #15-10	2BR Sb #15-11	3BR C2b #15-12	2BR P2 #15-13	2BR P1 #15-14	3BR P1b #15-15	3BR C1b #15-16	1BR 1 #15-17	1BR S1 #15-18
14	1BR S2 #14-10	2BR Sb #14-11	3BR C2b #14-12	2BR P2 #14-13	2BR P1 #14-14	3BR P1b #14-15	3BR C1b #14-16	1BR 1 #14-17	1BR S1 #14-18
13	1BR S2 #13-10	2BR Sb #13-11	3BR C2b #13-12	2BR P2 #13-13	2BR P1 #13-14	3BR P1b #13-15	3BR C1b #13-16	1BR 1 #13-17	1BR S1 #13-18
12	1BR S2 #12-10	2BR Sb #12-11	3BR C2b #12-12	2BR P2 #12-13	2BR P1 #12-14	3BR P1b #12-15	3BR C1b #12-16	1BR 1 #12-17	1BR S1 #12-18
11	1BR S2 #11-10	2BR Sb #11-11	3BR C2b #11-12	2BR P2 #11-13	2BR P1 #11-14	3BR P1b #11-15	3BR C1b #11-16	1BR 1 #11-17	1BR S1 #11-18
10	1BR S2 #10-10	2BR Sb #10-11	3BR C2b #10-12	2BR P2 #10-13	2BR P1 #10-14	3BR P1b #10-15	3BR C1b #10-16	1BR 1 #10-17	1BR S1 #10-18
9	1BR S2 #09-10	2BR Sb #09-11	3BR C2b #09-12	2BR P2 #09-13	2BR P1 #09-14	3BR P1b #09-15	3BR C1b #09-16	1BR 1 #09-17	1BR S1 #09-18
8	1BR S2 #08-10	2BR Sb #08-11	3BR C2b #08-12	2BR P2 #08-13	2BR P1 #08-14	3BR P1b #08-15	3BR C1b #08-16	1BR 1 #08-17	1BR S1 #08-18
7	1BR S2 #07-10	2BR Sb #07-11	3BR C2b #07-12	2BR P2 #07-13	2BR P1 #07-14	3BR P1b #07-15	3BR C1b #07-16	1BR 1 #07-17	1BR S1 #07-18
6	1BR S2 #06-10	2BR Sb #06-11	3BR C2b #06-12	2BR P2 #06-13	2BR P1 #06-14	3BR P1b #06-15	3BR C1b #06-16	1BR 1 #06-17	1BR S1 #06-18
5	1BR S2 #05-10	2BR Sa #05-11	3BR C2a #05-12	2BR P2 #05-13	2BR P1 #05-14	3BR P1a #05-15	3BR C1a #05-16	1BR 1 #05-17	1BR S1 #05-18
4	1BR S2 #04-10	2BR Sa #04-11	3BR C2a #04-12	2BR P2 #04-13	2BR P1 #04-14	3BR P1a #04-15	3BR C1a #04-16	1BR 1 #04-17	1BR S1 #04-18
3	1BR S2 #03-10	2BR Sa #03-11	3BR C2a #03-12	2BR P2 #03-13	2BR P1 #03-14	3BR P1a #03-15	3BR C1a #03-16	1BR 1 #03-17	1BR S1 #03-18
2	1BR S2 #02-10	2BR Sa #02-11	3BR C2-P #02-12	2BR P1-P #02-13	1BR 3-P #02-14	3BR P1-P #02-15	3BR C1a #02-16	1BR 1 #02-17	1BR S1 #02-18



# Unit Distribution

## BLOCK 16

	19	20	21	22	23	24	25	26
22	2BR C2-H #22-19	4BR C-H #22-20	4BR P-H #22-21	2BR C1-H #22-22	2BR C1-H #22-23	3BR P2-H #22-24	4BR P-H #22-25	2BR C2-H #22-26
21	2BR C2 #21-19	4BR Cb #21-20	4BR Pb #21-21	2BR C1 #21-22	2BR C1 #21-23	3BR P2b #21-24	4BR Pb #21-25	2BR C2 #21-26
20	2BR C2 #20-19	4BR Cb #20-20	4BR Pb #20-21	2BR C1 #20-22	2BR C1 #20-23	3BR P2b #20-24	4BR Pb #20-25	2BR C2 #20-26
19	2BR C2 #19-19	4BR Cb #19-20	4BR Pb #19-21	2BR C1 #19-22	2BR C1 #19-23	3BR P2b #19-24	4BR Pb #19-25	2BR C2 #19-26
18	2BR C2 #18-19	4BR Cb #18-20	4BR Pb #18-21	2BR C1 #18-22	2BR C1 #18-23	3BR P2b #18-24	4BR Pb #18-25	2BR C2 #18-26
17	2BR C2 #17-19	4BR Cb #17-20	4BR Pb #17-21	2BR C1 #17-22	2BR C1 #17-23	3BR P2b #17-24	4BR Pb #17-25	2BR C2 #17-26
16	2BR C2 #16-19	4BR Cb #16-20	4BR Pb #16-21	2BR C1 #16-22	2BR C1 #16-23	3BR P2b #16-24	4BR Pb #16-25	2BR C2 #16-26
15	2BR C2 #15-19	4BR Cb #15-20	4BR Pb #15-21	2BR C1 #15-22	2BR C1 #15-23	3BR P2b #15-24	4BR Pb #15-25	2BR C2 #15-26
14	2BR C2 #14-19	4BR Cb #14-20	4BR Pb #14-21	2BR C1 #14-22	2BR C1 #14-23	3BR P2b #14-24	4BR Pb #14-25	2BR C2 #14-26
13	2BR C2 #13-19	4BR Cb #13-20	4BR Pb #13-21	2BR C1 #13-22	2BR C1 #13-23	3BR P2b #13-24	4BR Pb #13-25	2BR C2 #13-26
12	2BR C2 #12-19	4BR Cb #12-20	4BR Pb #12-21	2BR C1 #12-22	2BR C1 #12-23	3BR P2b #12-24	4BR Pb #12-25	2BR C2 #12-26
11	2BR C2 #11-19	4BR Cb #11-20	4BR Pb #11-21	2BR C1 #11-22	2BR C1 #11-23	3BR P2b #11-24	4BR Pb #11-25	2BR C2 #11-26
10	2BR C2 #10-19	4BR Cb #10-20	4BR Pb #10-21	2BR C1 #10-22	2BR C1 #10-23	3BR P2b #10-24	4BR Pb #10-25	2BR C2 #10-26
9	2BR C2 #09-19	4BR Cb #09-20	4BR Pb #09-21	2BR C1 #09-22	2BR C1 #09-23	3BR P2b #09-24	4BR Pb #09-25	2BR C2 #09-26
8	2BR C2 #08-19	4BR Cb #08-20	4BR Pb #08-21	2BR C1 #08-22	2BR C1 #08-23	3BR P2b #08-24	4BR Pb #08-25	2BR C2 #08-26
7	2BR C2 #07-19	4BR Cb #07-20	4BR Pb #07-21	2BR C1 #07-22	2BR C1 #07-23	3BR P2b #07-24	4BR Pb #07-25	2BR C2 #07-26
6	2BR C2 #06-19	4BR Cb #06-20	4BR Pb #06-21	2BR C1 #06-22	2BR C1 #06-23	3BR P2b #06-24	4BR Pb #06-25	2BR C2 #06-26
5	2BR C2 #05-19	4BR Ca #05-20	4BR Pa #05-21	2BR C1 #05-22	2BR C1 #05-23	3BR P2a #05-24	4BR Pa #05-25	2BR C2 #05-26
4	2BR C2 #04-19	4BR Ca #04-20	4BR Pa #04-21	2BR C1 #04-22	2BR C1 #04-23	3BR P2a #04-24	4BR Pa #04-25	2BR C2 #04-26
3	2BR C2 #03-19	4BR Ca #03-20	4BR Pa #03-21	2BR C1 #03-22	2BR C1 #03-23	3BR P2a #03-24	4BR Pa #03-25	2BR C2 #03-26
2	2BR C2-P #02-19	4BR C-P #02-20	4BR P-P #02-21	2BR C1-P #02-22	1BR 4-P #02-23	3BR P2-P #02-24	4BR P-P #02-25	2BR C2-P #02-26

1 Bedroom2 Bedroom3 Bedroom4 Bedroom5 Bedroom

## BLOCK 18

	27	28	29	30	31	32	33	34	35
22	1BR S2 #22-27	2BR S-H2 #22-28	3BR C2-H #22-29	2BR P2-H #22-30	2BR P1-H #22-31	3BR P1-H #22-32	3BR P3-H #22-33	1BR 1 #22-34	1BR S1 #22-35
21	1BR S2 #21-27	2BR Sb #21-28	3BR C2b #21-29	2BR P2 #21-30	2BR P1 #21-31	3BR P1b #21-32	3BR P3b #21-33	1BR 1 #21-34	1BR S1 #21-35
20	1BR S2 #20-27	2BR Sb #20-28	3BR C2b #20-29	2BR P2 #20-30	2BR P1 #20-31	3BR P1b #20-32	3BR P3b #20-33	1BR 1 #20-34	1BR S1 #20-35
19	1BR S2 #19-27	2BR Sb #19-28	3BR C2b #19-29	2BR P2 #19-30	2BR P1 #19-31	3BR P1b #19-32	3BR P3b #19-33	1BR 1 #19-34	1BR S1 #19-35
18	1BR S2 #18-27	2BR Sb #18-28	3BR C2b #18-29	2BR P2 #18-30	2BR P1 #18-31	3BR P1b #18-32	3BR P3b #18-33	1BR 1 #18-34	1BR S1 #18-35
17	1BR S2 #17-27	2BR Sb #17-28	3BR C2b #17-29	2BR P2 #17-30	2BR P1 #17-31	3BR P1b #17-32	3BR P3b #17-33	1BR 1 #17-34	1BR S1 #17-35
16	1BR S2 #16-27	2BR Sb #16-28	3BR C2b #16-29	2BR P2 #16-30	2BR P1 #16-31	3BR P1b #16-32	3BR P3b #16-33	1BR 1 #16-34	1BR S1 #16-35
15	1BR S2 #15-27	2BR Sb #15-28	3BR C2b #15-29	2BR P2 #15-30	2BR P1 #15-31	3BR P1b #15-32	3BR P3b #15-33	1BR 1 #15-34	1BR S1 #15-35
14	1BR S2 #14-27	2BR Sb #14-28	3BR C2b #14-29	2BR P2 #14-30	2BR P1 #14-31	3BR P1b #14-32	3BR P3b #14-33	1BR 1 #14-34	1BR S1 #14-35
13	1BR S2 #13-27	2BR Sb #13-28	3BR C2b #13-29	2BR P2 #13-30	2BR P1 #13-31	3BR P1b #13-32	3BR P3b #13-33	1BR 1 #13-34	1BR S1 #13-35
12	1BR S2 #12-27	2BR Sb #12-28	3BR C2b #12-29	2BR P2 #12-30	2BR P1 #12-31	3BR P1b #12-32	3BR P3b #12-33	1BR 1 #12-34	1BR S1 #12-35
11	1BR S2 #11-27	2BR Sb #11-28	3BR C2b #11-29	2BR P2 #11-30	2BR P1 #11-31	3BR P1b #11-32	3BR P3b #11-33	1BR 1 #11-34	1BR S1 #11-35
10	1BR S2 #10-27	2BR Sb #10-28	3BR C2b #10-29	2BR P2 #10-30	2BR P1 #10-31	3BR P1b #10-32	3BR P3b #10-33	1BR 1 #10-34	1BR S1 #10-35
9	1BR S2 #09-27	2BR Sb #09-28	3BR C2b #09-29	2BR P2 #09-30	2BR P1 #09-31	3BR P1b #09-32	3BR P3b #09-33	1BR 1 #09-34	1BR S1 #09-35
8	1BR S2 #08-27	2BR Sb #08-28	3BR C2b #08-29	2BR P2 #08-30	2BR P1 #08-31	3BR P1b #08-32	3BR P3b #08-33	1BR 1 #08-34	1BR S1 #08-35
7	1BR S2 #07-27	2BR Sb #07-28	3BR C2b #07-29	2BR P2 #07-30	2BR P1 #07-31	3BR P1b #07-32	3BR P3b #07-33	1BR 1 #07-34	1BR S1 #07-35
6	1BR S2 #06-27	2BR Sb #06-28	3BR C2b #06-29	2BR P2 #06-30	2BR P1 #06-31	3BR P1b #06-32	3BR P3b #06-33	1BR 1 #06-34	1BR S1 #06-35
5	1BR S2 #05-27	2BR Sa #05-28	3BR C2a #05-29	2BR P2 #05-30	2BR P1 #05-31	3BR P1a #05-32	3BR P3a #05-33	1BR 1 #05-34	1BR S1 #05-35
4	1BR S2 #04-27	2BR Sa #04-28	3BR C2a #04-29	2BR P2 #04-30	2BR P1 #04-31	3BR P1a #04-32	3BR P3a #04-33	1BR 1 #04-34	1BR S1 #04-35
3	1BR S2 #03-27	2BR Sa #03-28	3BR C2a #03-29	2BR P2 #03-30	2BR P1 #03-31	3BR P1a #03-32	3BR P3a #03-33	1BR 1 #03-34	1BR S1 #03-35
2	1BR S2-P #02-27	2BR S-P #02-28	3BR C2-P #02-29	2BR P1-P #02-30	1BR 3-P #02-31	3BR P1-P #02-32	3BR P3-P #02-33	1BR 1-P #02-34	1BR S1-P #02-35



1-BEDROOM

UNIT TYPES

1BR 1  
40 sqm / 431sq ft

1BR1-P  
40 sqm / 431 sq ft

1BR 2-P  
39 sqm / 420 sq ft

1BR 3-P  
40 sqm / 431 sq ft

1BR 4-P  
40 sqm / 431 sq ft

1BR S1  
47 sqm / 506 sq ft

1BR S1-P  
47 sqm / 506 sq ft

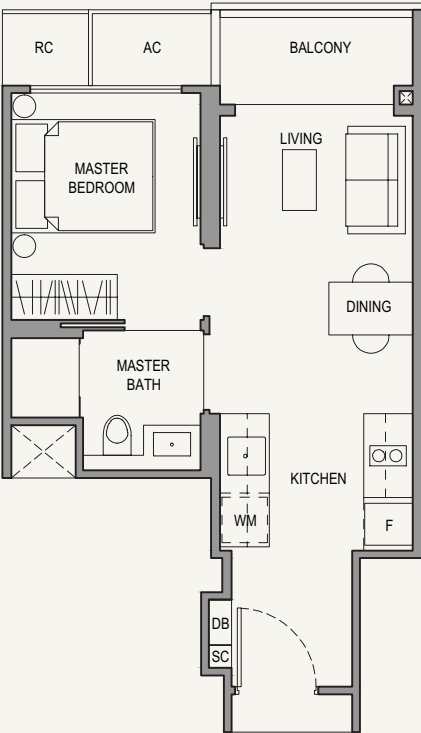
1BR S2  
47 sqm / 506 sq ft

1BR S2-P  
47 sqm / 506 sq ft

1-BEDROOM

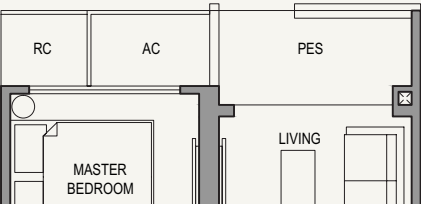
Type 1BR 1  
40 sqm / 431sq ft

#02-08 to 22-08  
#02-17 to 22-17  
#03-34 to 22-34



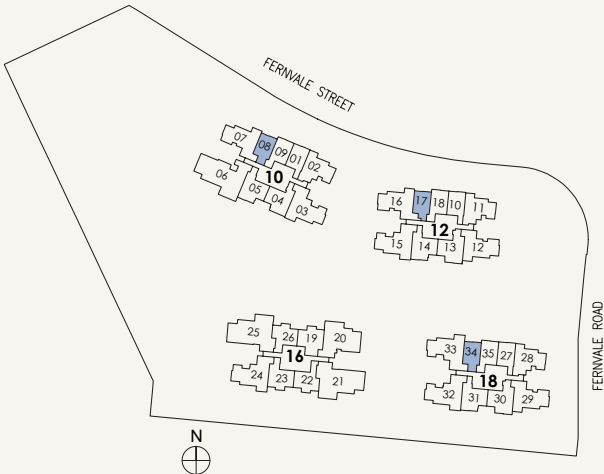
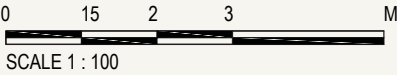
Type 1BR1-P  
40 sqm / 431 sq ft

#02-34



- LEGEND:
- Wall not allowed to be hacked or altered (including by way of drilling) (Refer to the clause pertaining to PPVC in the S&P Documents)
  - Services void space (excluded from strata area)
  - Rainwater downpipe shaft space (excluded from strata area)

Area include A/C ledge, balcony, PES and void (where applicable). Some units are mirror images of the apartment plans shown in the brochure. Please refer to the key plans for orientation. The plans are correct at the time of printing and are subject to such amendments as may be required or approved by the relevant authorities. The plans are not drawn to scale and are for the purpose of visual representation of the different available layouts. All floor areas are estimates only and are subject to final survey.

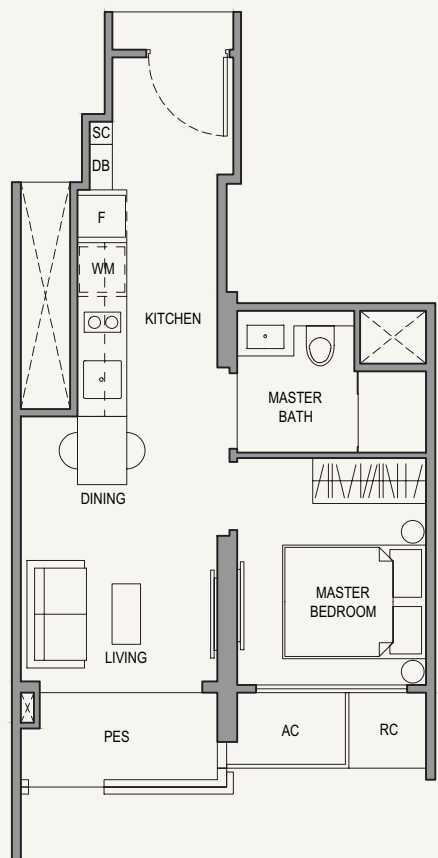




# 1-BEDROOM

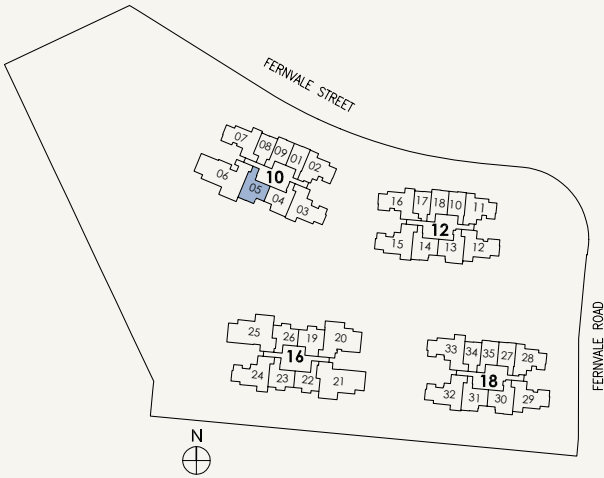
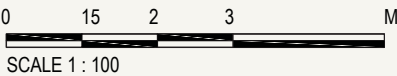
Type 1BR 2-P  
39 sqm / 420 sq ft

#02-05



- LEGEND:
- Wall not allowed to be hacked or altered (including by way of drilling) (Refer to the clause pertaining to PPVC in the S&P Documents)
  - Services void space (excluded from strata area)
  - Rainwater downpipe shaft space (excluded from strata area)

Area include A/C ledge, balcony, PES and void (where applicable). Some units are mirror images of the apartment plans shown in the brochure. Please refer to the key plans for orientation. The plans are correct at the time of printing and are subject to such amendments as may be required or approved by the relevant authorities. The plans are not drawn to scale and are for the purpose of visual representation of the different available layouts. All floor areas are estimates only and are subject to final survey.

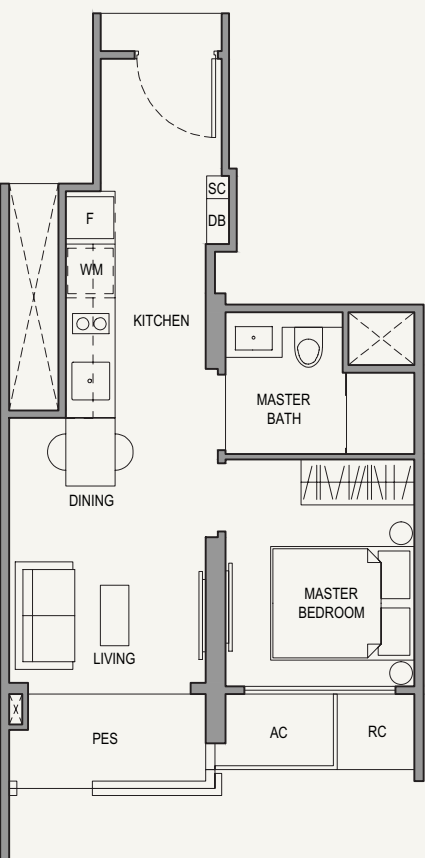


# 1-BEDROOM

Type 1BR 3-P  
40 sqm / 431 sq ft

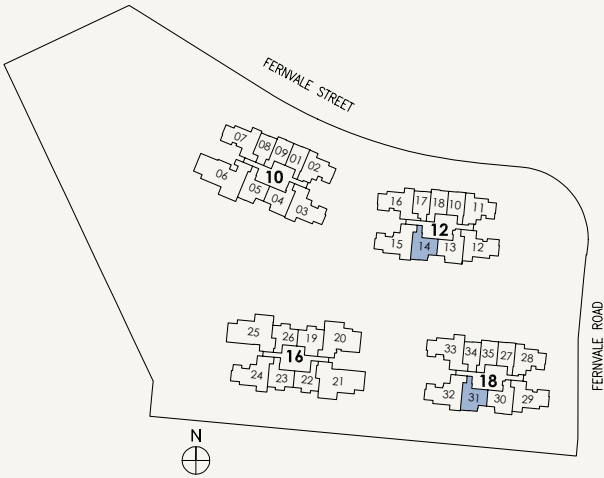
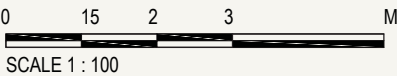
#02-14

#02-31



- LEGEND:
- Wall not allowed to be hacked or altered (including by way of drilling) (Refer to the clause pertaining to PPVC in the S&P Documents)
  - Services void space (excluded from strata area)
  - Rainwater downpipe shaft space (excluded from strata area)

Area include A/C ledge, balcony, PES and void (where applicable). Some units are mirror images of the apartment plans shown in the brochure. Please refer to the key plans for orientation. The plans are correct at the time of printing and are subject to such amendments as may be required or approved by the relevant authorities. The plans are not drawn to scale and are for the purpose of visual representation of the different available layouts. All floor areas are estimates only and are subject to final survey.

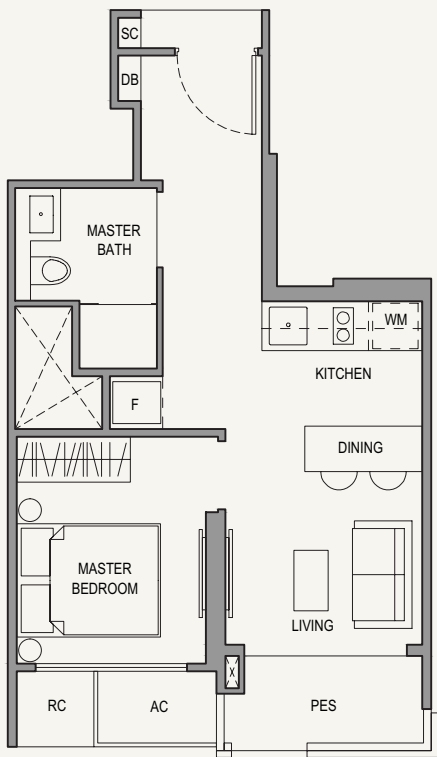




# 1-BEDROOM

Type 1BR 4-P  
40 sqm / 431 sq ft

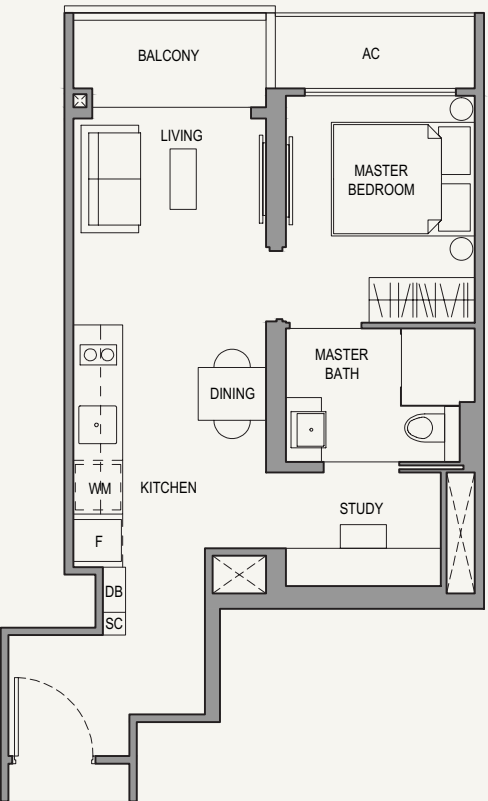
#02-23



# 1-BEDROOM

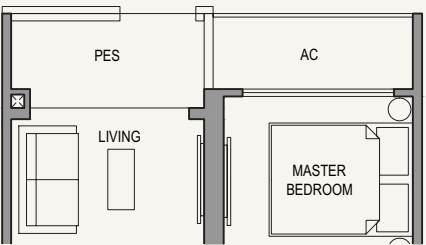
Type 1BR S1  
47 sqm / 506 sq ft

#02-09 to 22-09  
#02-18 to 22-18  
#03-35 to 22-35



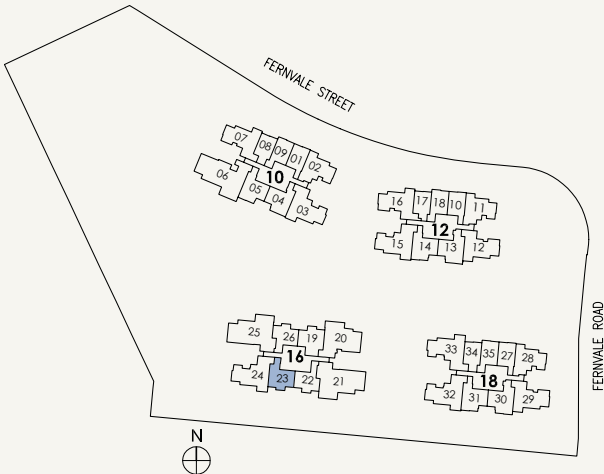
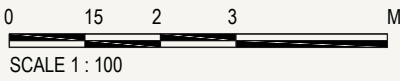
Type 1BR S1-P  
47 sqm / 506 sq ft

#02-35



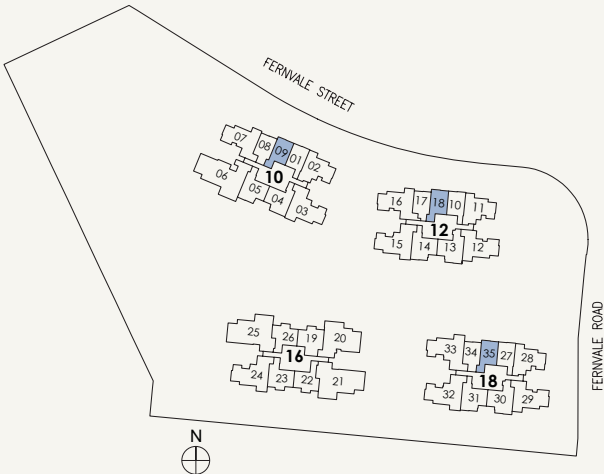
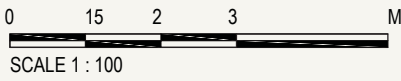
- LEGEND:
- Wall not allowed to be hacked or altered (including by way of drilling) (Refer to the clause pertaining to PPVC in the S&P Documents)
  - Services void space (excluded from strata area)
  - Rainwater downpipe shaft space (excluded from strata area)

Area include A/C ledge, balcony, PES and void (where applicable). Some units are mirror images of the apartment plans shown in the brochure. Please refer to the key plans for orientation. The plans are correct at the time of printing and are subject to such amendments as may be required or approved by the relevant authorities. The plans are not drawn to scale and are for the purpose of visual representation of the different available layouts. All floor areas are estimates only and are subject to final survey.



- LEGEND:
- Wall not allowed to be hacked or altered (including by way of drilling) (Refer to the clause pertaining to PPVC in the S&P Documents)
  - Services void space (excluded from strata area)
  - Rainwater downpipe shaft space (excluded from strata area)

Area include A/C ledge, balcony, PES and void (where applicable). Some units are mirror images of the apartment plans shown in the brochure. Please refer to the key plans for orientation. The plans are correct at the time of printing and are subject to such amendments as may be required or approved by the relevant authorities. The plans are not drawn to scale and are for the purpose of visual representation of the different available layouts. All floor areas are estimates only and are subject to final survey.

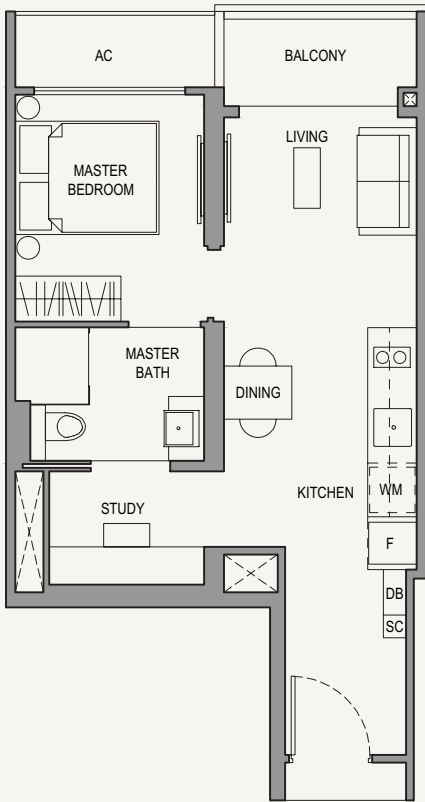




1-BEDROOM

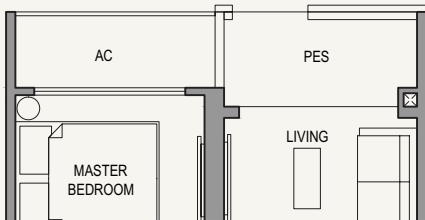
Type 1BR S2  
47 sqm / 506 sq ft

#02-01 to 22-01  
#02-10 to 22-10  
#03-27 to 22-27



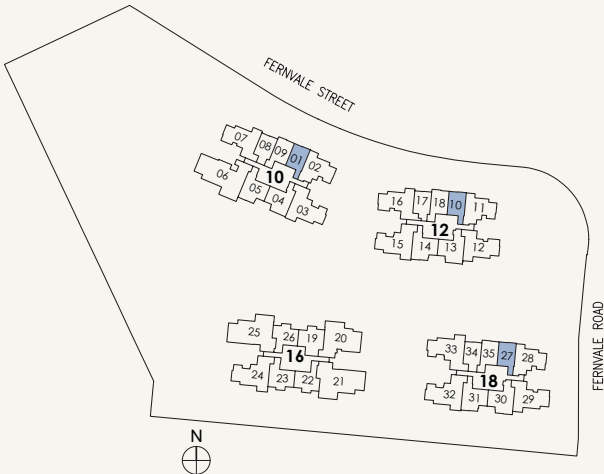
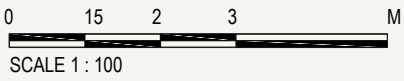
Type 1BR S2-P  
47 sqm / 506 sq ft

#02-27



- LEGEND:
- Wall not allowed to be hacked or altered (including by way of drilling) (Refer to the clause pertaining to PPVC in the S&P Documents)
  - Services void space (excluded from strata area)
  - Rainwater downpipe shaft space (excluded from strata area)

Area include A/C ledge, balcony, PES and void (where applicable). Some units are mirror images of the apartment plans shown in the brochure. Please refer to the key plans for orientation. The plans are correct at the time of printing and are subject to such amendments as may be required or approved by the relevant authorities. The plans are not drawn to scale and are for the purpose of visual representation of the different available layouts. All floor areas are estimates only and are subject to final survey.



2-BEDROOM

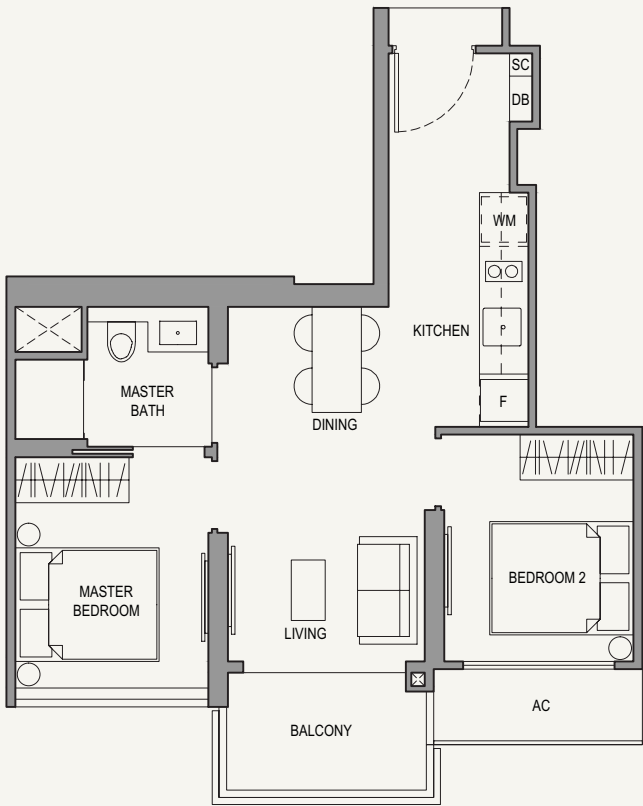
UNIT TYPES	
2BR C1 55 sqm / 592 sq ft	2BR C1-P 55 sqm / 592 sq ft
2BR C1-H 65 sqm / 700 sq ft	2BR C2 54 sqm / 581 sq ft
2BR C2-P 54 sqm / 581 sq ft	2BR C2-H 65 sqm / 700 sq ft
2BR P1-P 62 sqm / 667 sq ft	2BR P1 62 sqm / 667 sq ft
2BR P1-H 73 sqm / 786 sq ft	2BR P2 62 sqm / 667 sq ft
2BR P2-H 73 sqm / 786 sq ft	2BR Sa 72 sqm / 775 sq ft
2BR S-P 72 sqm / 775 sq ft	2BR Sb 73 sqm / 786 sq ft
2BR S-H1 87 sqm / 936 sq ft	2BR S-H2 86 sqm / 926 sq ft



# 2-BEDROOM

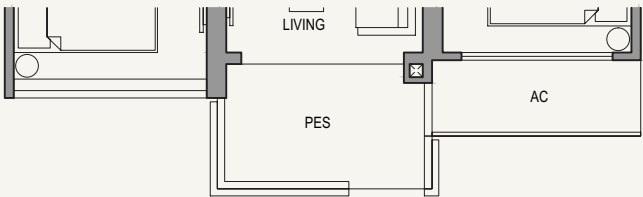
Type 2BR C1  
55 sqm / 592 sq ft

#03-22 to 21-22  
#03-23 to 21-23\*



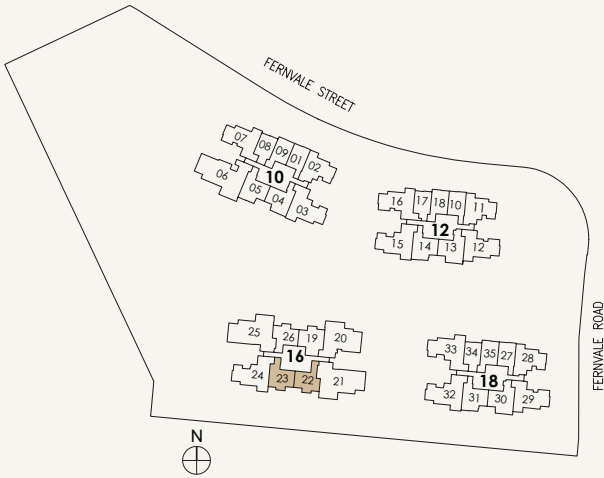
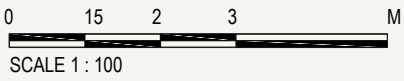
Type 2BR C1-P  
55 sqm / 592 sq ft

#02-22



- LEGEND:
- Wall not allowed to be hacked or altered (including by way of drilling) (Refer to the clause pertaining to PPVC in the S&P Documents)
  - Services void space (excluded from strata area)
  - Rainwater downpipe shaft space (excluded from strata area)

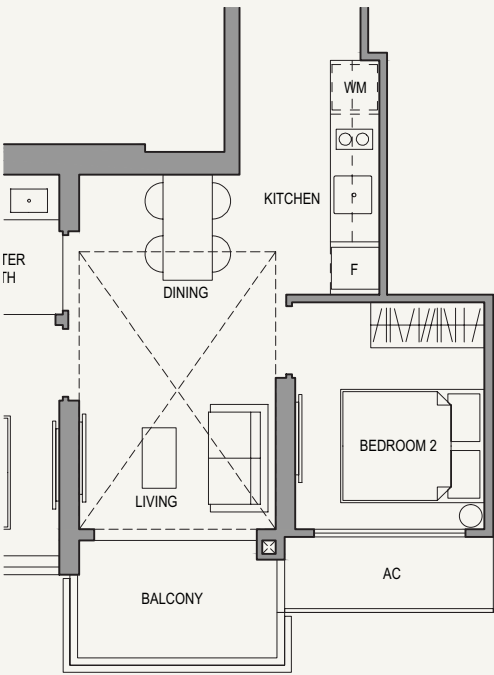
\*MIRROR IMAGE  
Area include A/C ledge, balcony, PES and void (where applicable). Some units are mirror images of the apartment plans shown in the brochure. Please refer to the key plans for orientation. The plans are correct at the time of printing and are subject to such amendments as may be required or approved by the relevant authorities. The plans are not drawn to scale and are for the purpose of visual representation of the different available layouts. All floor areas are estimates only and are subject to final survey.



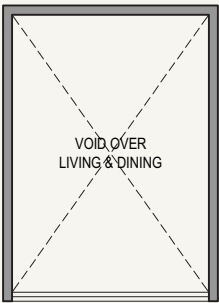
# 2-BEDROOM

Type 2BR C1-H  
65 sqm / 700 sq ft

#22-22  
#22-23\*



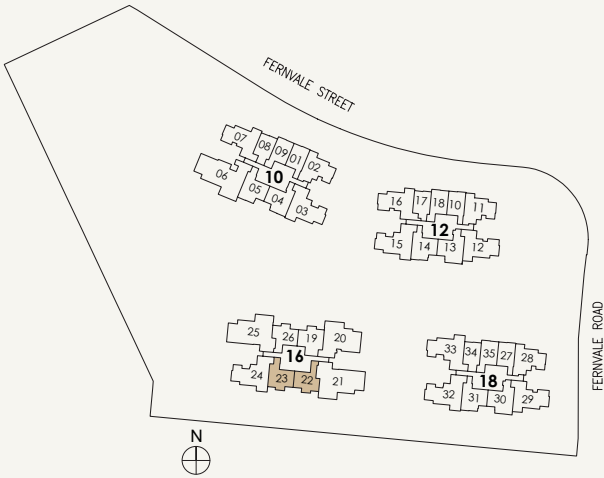
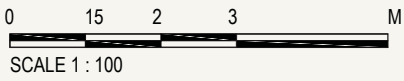
LOWER



UPPER

- LEGEND:
- Wall not allowed to be hacked or altered (including by way of drilling) (Refer to the clause pertaining to PPVC in the S&P Documents)
  - Services void space (excluded from strata area)
  - Rainwater downpipe shaft space (excluded from strata area)

\*MIRROR IMAGE  
Area include A/C ledge, balcony, PES and void (where applicable). Some units are mirror images of the apartment plans shown in the brochure. Please refer to the key plans for orientation. The plans are correct at the time of printing and are subject to such amendments as may be required or approved by the relevant authorities. The plans are not drawn to scale and are for the purpose of visual representation of the different available layouts. All floor areas are estimates only and are subject to final survey.

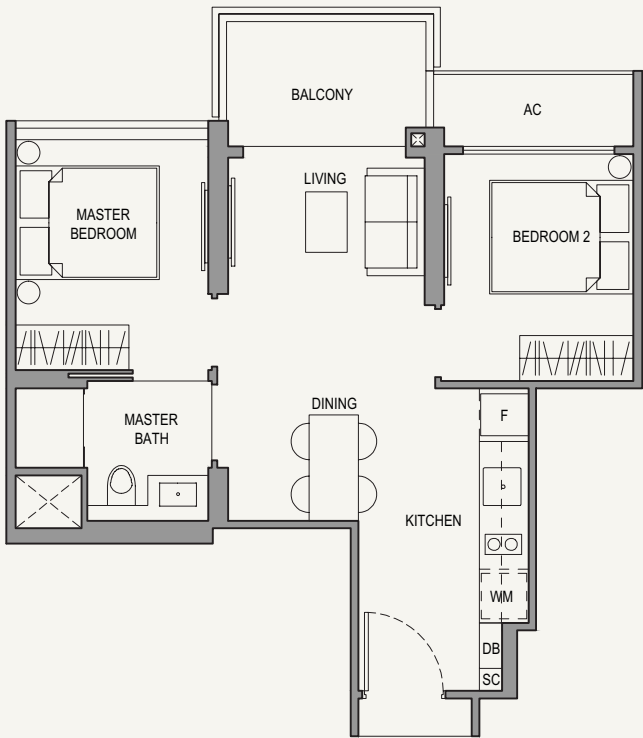




# 2-BEDROOM

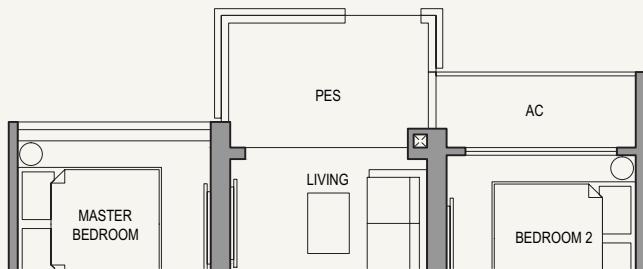
Type 2BR C2  
54 sqm / 581 sq ft

#03-19 to 21-19  
#03-26 to 21-26\*



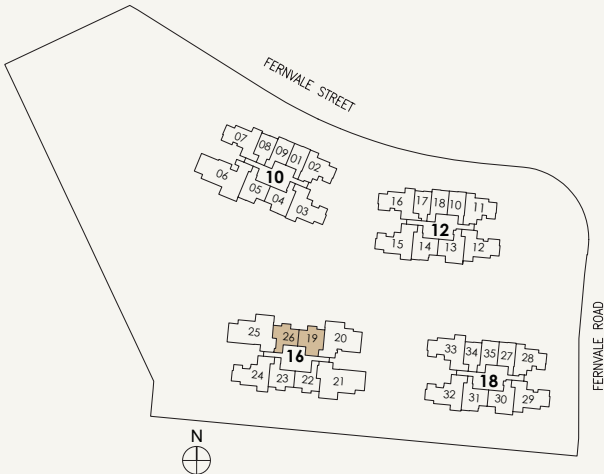
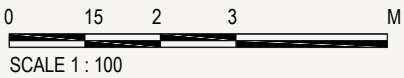
Type 2BR C2-P  
54 sqm / 581 sq ft

#02-19  
#02-26\*



- LEGEND:
- Wall not allowed to be hacked or altered (including by way of drilling) (Refer to the clause pertaining to PPVC in the S&P Documents)
  - Services void space (excluded from strata area)
  - Rainwater downpipe shaft space (excluded from strata area)

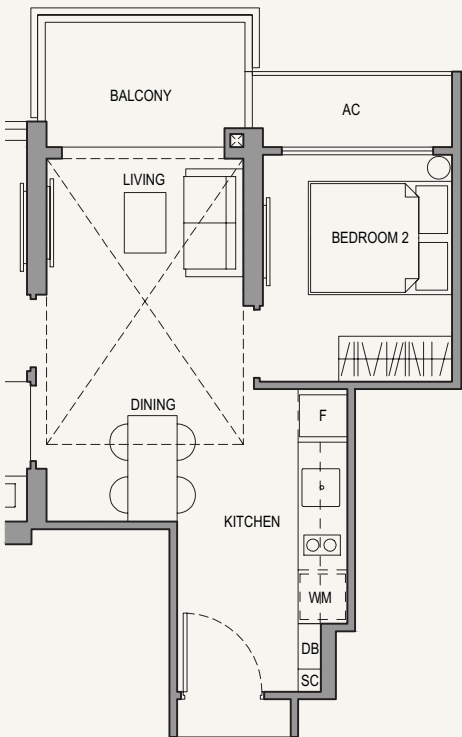
\*MIRROR IMAGE  
Area include A/C ledge, balcony, PES and void (where applicable). Some units are mirror images of the apartment plans shown in the brochure. Please refer to the key plans for orientation. The plans are correct at the time of printing and are subject to such amendments as may be required or approved by the relevant authorities. The plans are not drawn to scale and are for the purpose of visual representation of the different available layouts. All floor areas are estimates only and are subject to final survey.



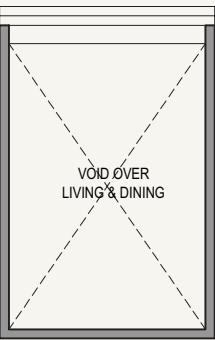
# 2-BEDROOM

Type 2BR C2-H  
65 sqm / 700 sq ft

#22-19  
#22-26\*



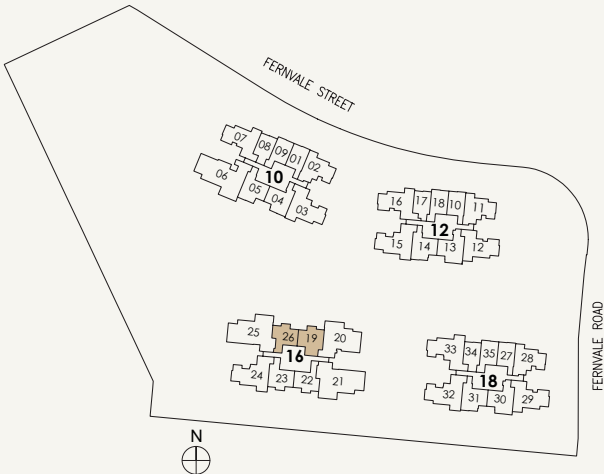
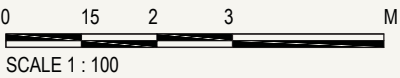
LOWER



UPPER

- LEGEND:
- Wall not allowed to be hacked or altered (including by way of drilling) (Refer to the clause pertaining to PPVC in the S&P Documents)
  - Services void space (excluded from strata area)
  - Rainwater downpipe shaft space (excluded from strata area)

\*MIRROR IMAGE  
Area include A/C ledge, balcony, PES and void (where applicable). Some units are mirror images of the apartment plans shown in the brochure. Please refer to the key plans for orientation. The plans are correct at the time of printing and are subject to such amendments as may be required or approved by the relevant authorities. The plans are not drawn to scale and are for the purpose of visual representation of the different available layouts. All floor areas are estimates only and are subject to final survey.





## 2-BEDROOM

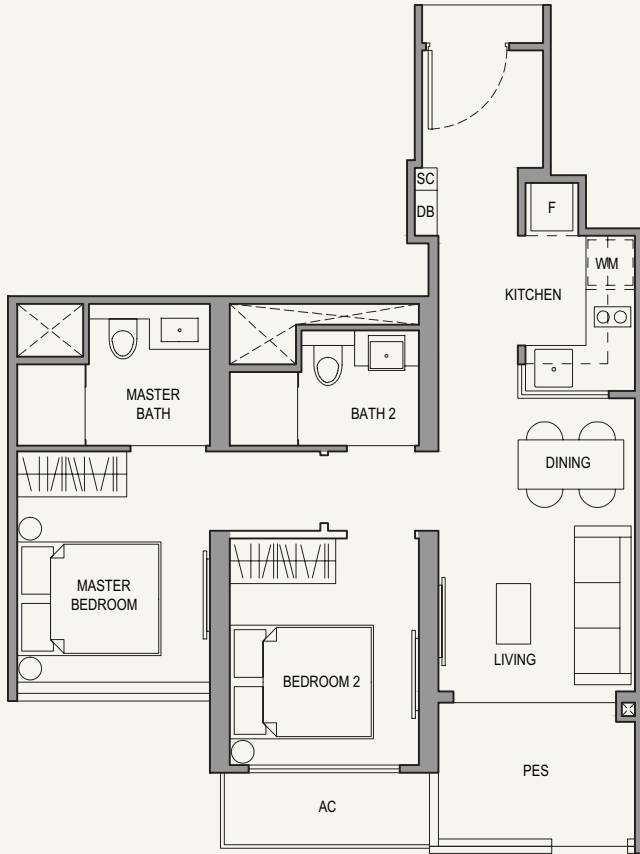
## Type 2BR P1-P

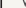
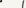
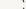
62 sqm / 667 sq ft

#02-04

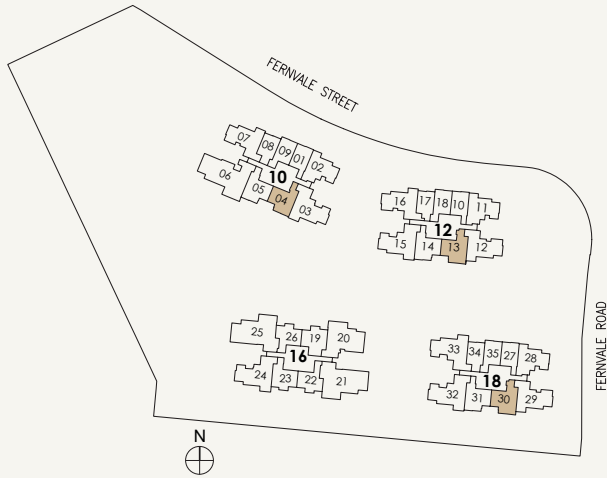
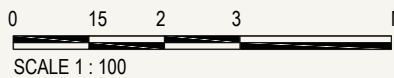
#02-13

#02-30



- |   |   |
|---|---|
|  | Wall not allowed to be hacked or altered<br>(including by way of drilling)<br>(Refer to the clause pertaining to PPVC in the S&P Documents) |
|  | Services void space (excluded from strata area)   |
|  | Rainwater downpipe shaft space (excluded from strata area)  |

Area include A/ ledge, balcony, PES and void (where applicable). Some units are mirror images of the apartment plans shown in the brochure. Please refer to the key plans for orientation. The plans are correct at the time of printing and are subject to such amendments as may be required or approved by the relevant authorities. The plans are not drawn to scale and are for the purpose of visual representation of the different available layouts. All floor areas are estimates only and are subject to final survey.



## 2-BEDROOM

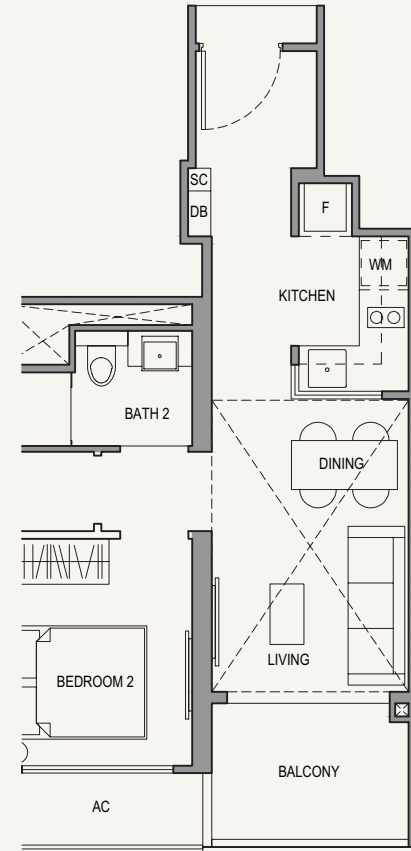
## Type 2BR P1

62 sqm / 667 sq ft

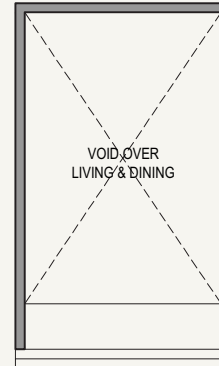
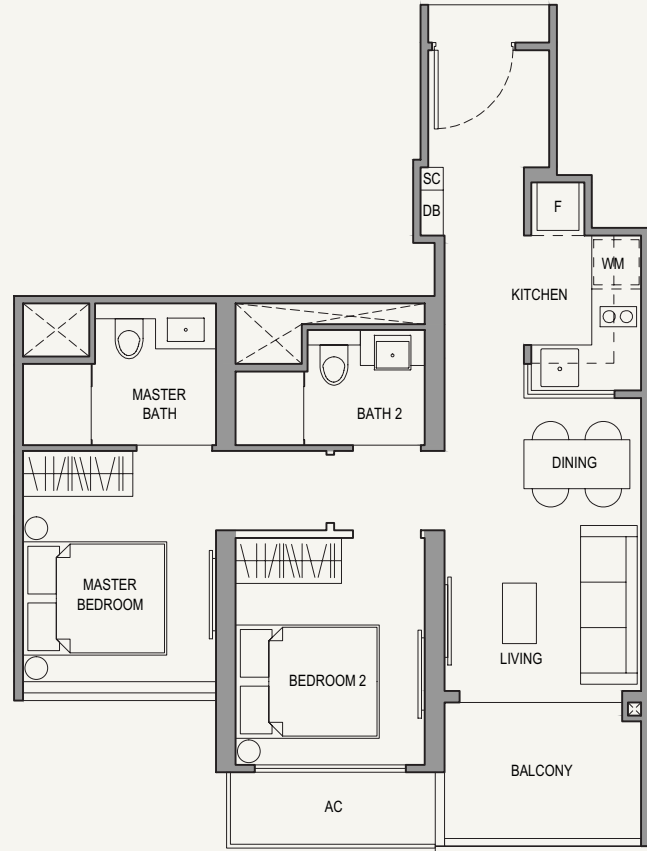
#03-04 to 21-04

#03-05 to 21-05\*

#03-14 to 21-14\*



LOWER



UPPER

## Type 2BR P1-H

73 sqm / 786 sq ft

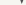
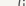
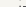
#22-04

#22-05\*

#22-14\*

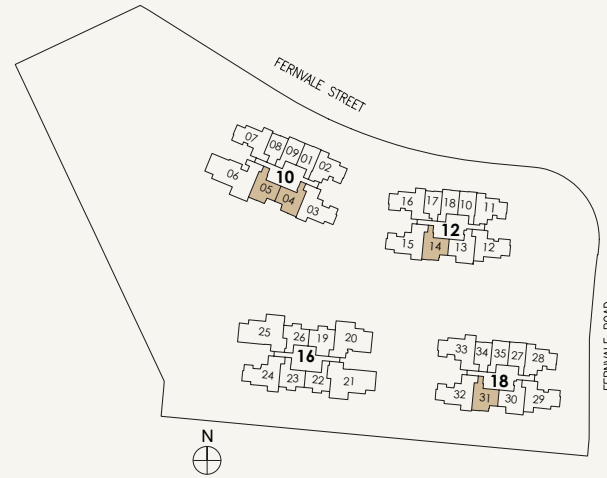
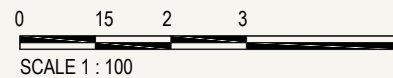
#22-31 \*



- |   |  |
|---|--|
|  | Wall not allowed to be hacked or altered<br>(including by way of drilling)<br>(Refer to the clause pertaining to PPVC in the S&P Document) |
|  | Services void space (excluded from strata area)  |
|  | Rainwater downpipe shaft space (excluded from strata area)   |

\*MIRROR IMAGE

Area include A/C ledge, balcony, PES and void (where applicable). Some units are mirror images of the apartment plans shown in this brochure. Please refer to the key plans for orientation. The plans are correct at the time of printing and are subject to such amendments as may be required or approved by the relevant authorities. The plans are not drawn to scale and are for the purpose of visual representation of the different available layouts. All floor areas are estimates only and are subject to final survey.

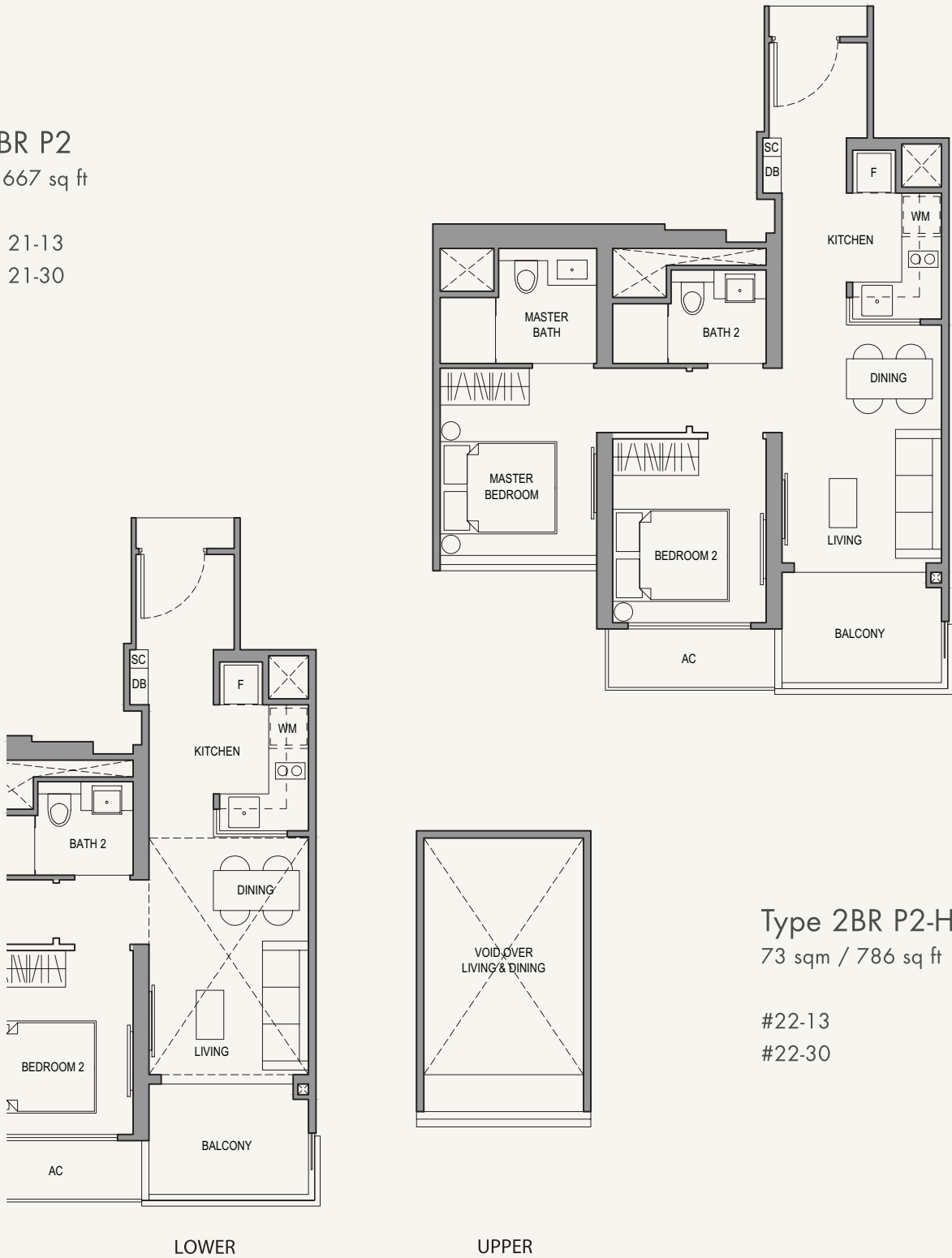




# 2-BEDROOM

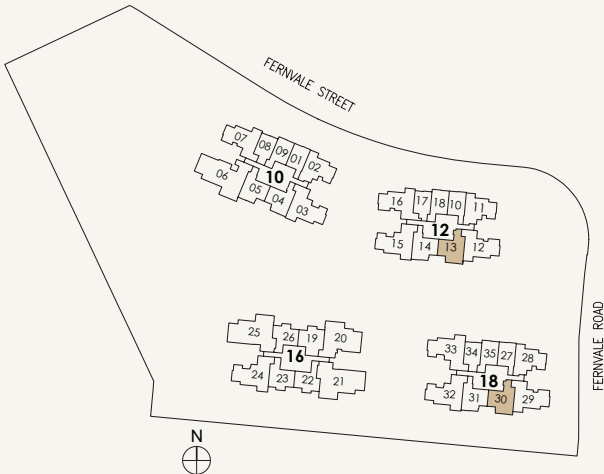
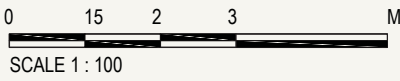
Type 2BR P2  
62 sqm / 667 sq ft

#03-13 to 21-13  
#03-30 to 21-30



- LEGEND:
- Wall not allowed to be hacked or altered (including by way of drilling) (Refer to the clause pertaining to PPVC in the S&P Documents)
  - Services void space (excluded from strata area)
  - Rainwater downpipe shaft space (excluded from strata area)

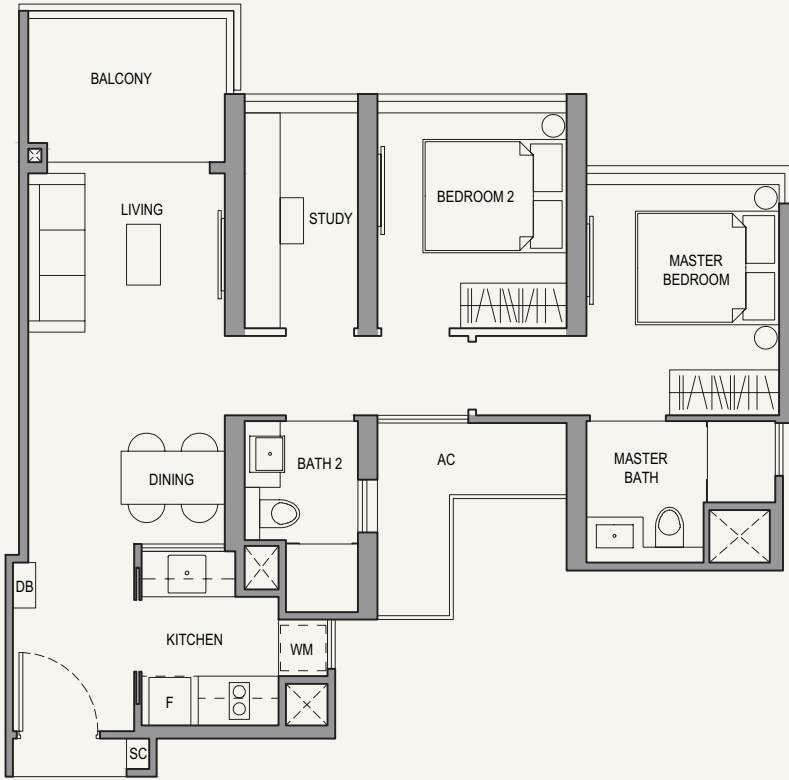
Area include A/C ledge, balcony, PES and void (where applicable). Some units are mirror images of the apartment plans shown in the brochure. Please refer to the key plans for orientation. The plans are correct at the time of printing and are subject to such amendments as may be required or approved by the relevant authorities. The plans are not drawn to scale and are for the purpose of visual representation of the different available layouts. All floor areas are estimates only and are subject to final survey.



# 2-BEDROOM

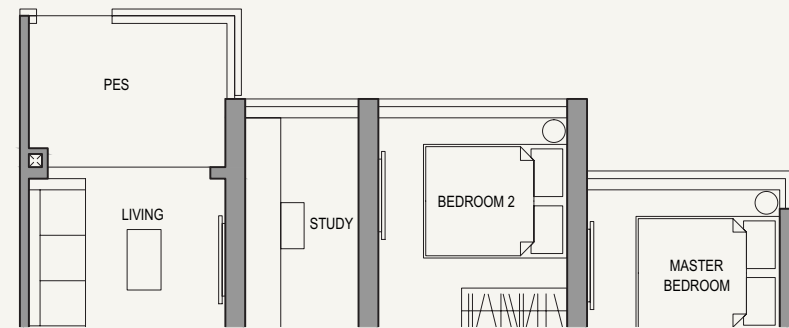
Type 2BR Sa  
72 sqm / 775 sq ft

#02-02 to 05-02  
#02-11 to 05-11  
#03-28 to 05-28



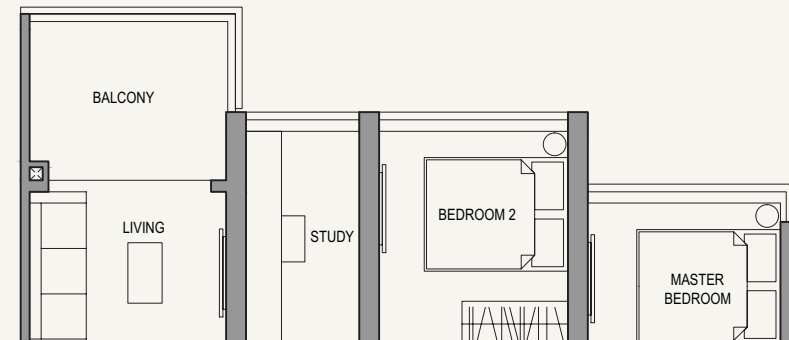
Type 2BR S-P  
72 sqm / 775 sq ft

#02-28



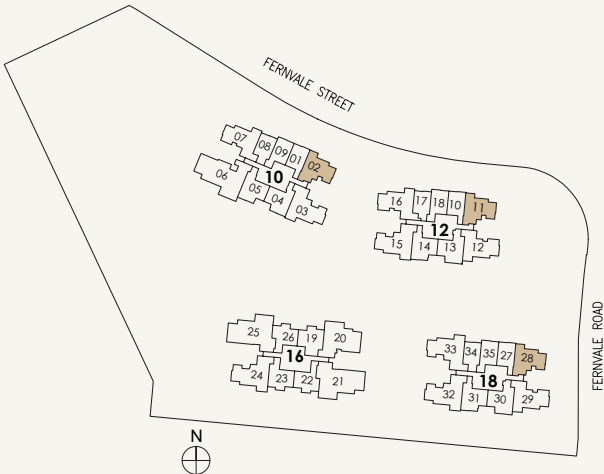
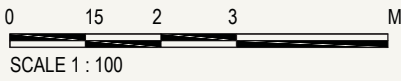
Type 2BR Sb  
73 sqm / 786 sq ft

#06-02 to 21-02  
#06-11 to 21-11  
#06-28 to 21-28



- LEGEND:
- Wall not allowed to be hacked or altered (including by way of drilling) (Refer to the clause pertaining to PPVC in the S&P Documents)
  - Services void space (excluded from strata area)
  - Rainwater downpipe shaft space (excluded from strata area)

Area include A/C ledge, balcony, PES and void (where applicable). Some units are mirror images of the apartment plans shown in the brochure. Please refer to the key plans for orientation. The plans are correct at the time of printing and are subject to such amendments as may be required or approved by the relevant authorities. The plans are not drawn to scale and are for the purpose of visual representation of the different available layouts. All floor areas are estimates only and are subject to final survey.

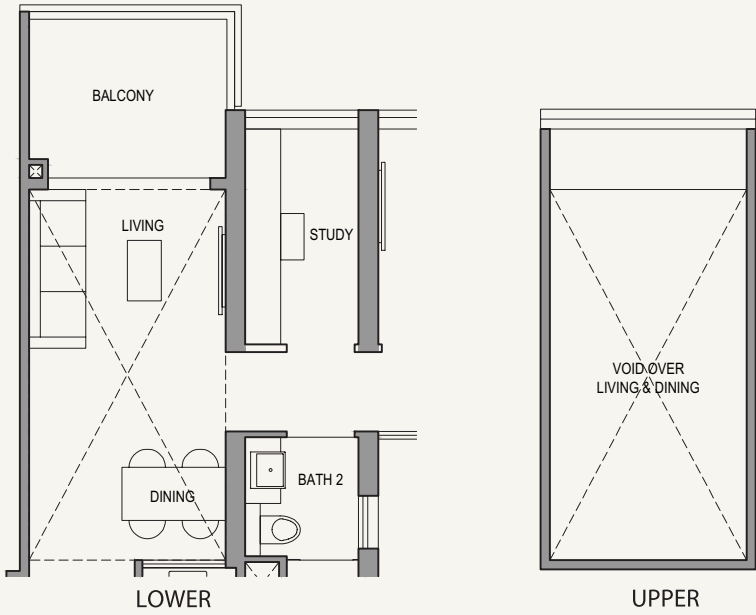




2-BEDROOM

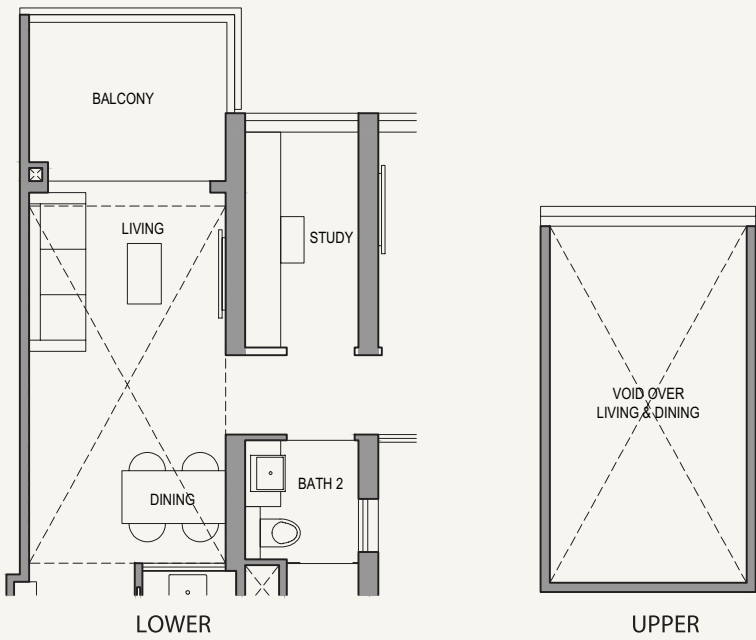
Type 2BR S-H1  
87 sqm / 936 sq ft

#22-02



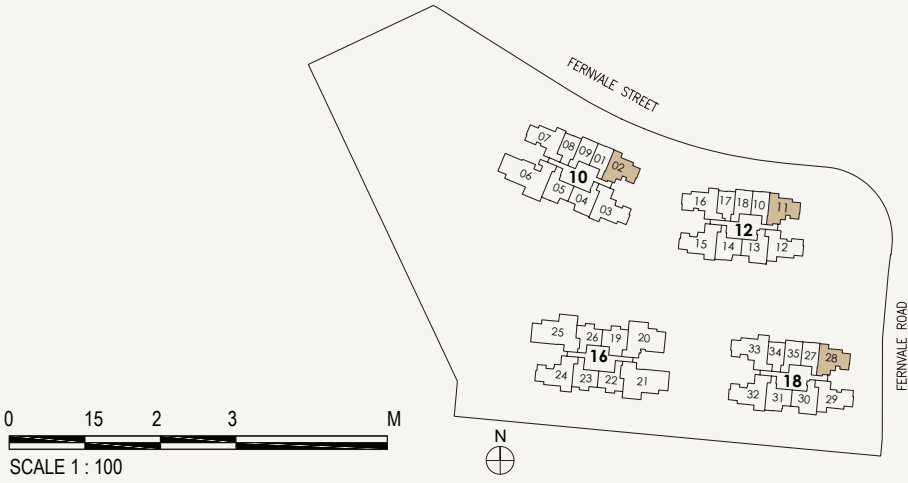
Type 2BR S-H2  
86 sqm / 926 sq ft

#22-11  
#22-28



- LEGEND:
- Wall not allowed to be hacked or altered (including by way of drilling) (Refer to the clause pertaining to PPVC in the S&P Documents)
  - Services void space (excluded from strata area)
  - Rainwater downpipe shaft space (excluded from strata area)

Area include A/C ledge, balcony, PES and void (where applicable). Some units are mirror images of the apartment plans shown in the brochure. Please refer to the key plans for orientation. The plans are correct at the time of printing and are subject to such amendments as may be required or approved by the relevant authorities. The plans are not drawn to scale and are for the purpose of visual representation of the different available layouts. All floor areas are estimates only and are subject to final survey.



3-BEDROOM

UNIT TYPES

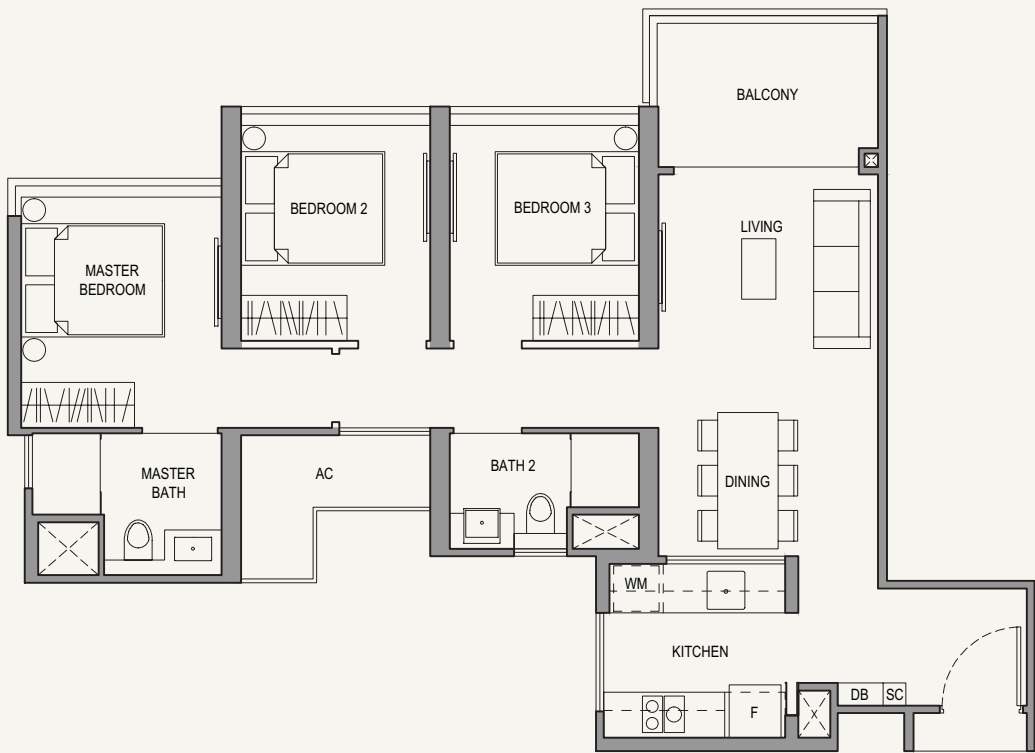
3BR C1a 80 sqm / 861 sq ft	3BR C1b 81 sqm / 872 sq ft
3BR C1-H1 95 sqm / 1023 sq ft	3BR C1-H2 96 sqm / 1033 sq ft
3BR C2a 80 sqm / 861sq ft	3BR C2-P 80 sqm / 861 sq ft
3BR C2b 81 sqm / 872 sq ft	3BR C2-H 95 sqm / 1023 sq ft
3BR P1a 90 sqm / 969sq ft	3BR P1-P 96 sqm / 1033 sq ft
3BR P1b 91 sqm / 980 sq ft	3BR P1-H 108 sqm / 1163 sq ft
3BR P2a 89 sqm / 958 sq ft	3BR P2-P 97 sqm / 1044 sq ft
3BR P2b 90 sqm / 969 sq ft	BR P2-H 105 sqm / 1130 sq ft
3BR P3a 90 sqm / 969 sq ft	3BR P3-P 98 sqm / 1055 sq ft
3BR P3b 91 sqm / 980 sq ft	3BR P3-H 108 sqm / 1163 sq ft



3-BEDROOM

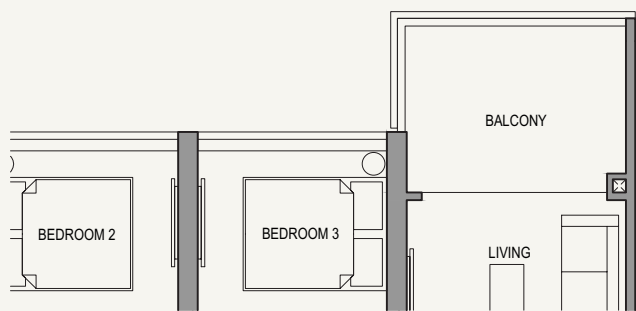
Type 3BR C1a  
80 sqm / 861 sq ft

#02-07 to 05-07  
#02-16 to 05-16



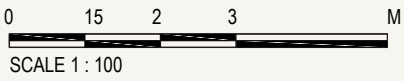
Type 3BR C1b  
81 sqm / 872 sq ft

#06-07 to 21-07  
#06-16 to 21-16



- LEGEND:
- Wall not allowed to be hacked or altered (including by way of drilling) (Refer to the clause pertaining to PPVC in the S&P Documents)
  - Services void space (excluded from strata area)
  - Rainwater downpipe shaft space (excluded from strata area)

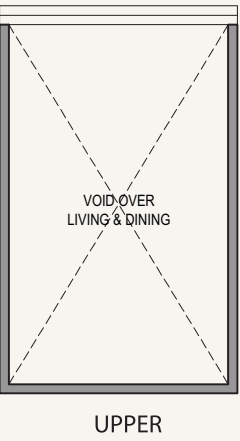
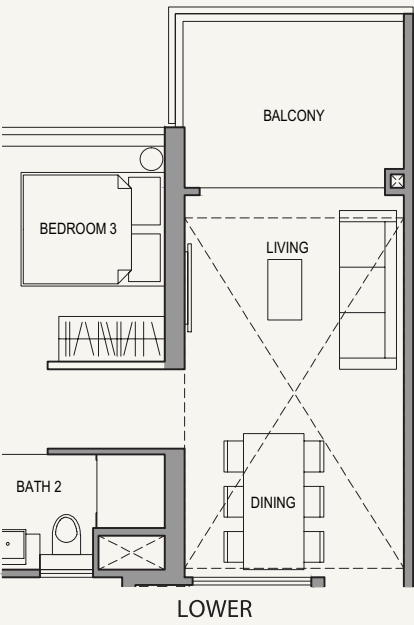
Area include A/C ledge, balcony, PES and void (where applicable). Some units are mirror images of the apartment plans shown in the brochure. Please refer to the key plans for orientation. The plans are correct at the time of printing and are subject to such amendments as may be required or approved by the relevant authorities. The plans are not drawn to scale and are for the purpose of visual representation of the different available layouts. All floor areas are estimates only and are subject to final survey.



3-BEDROOM

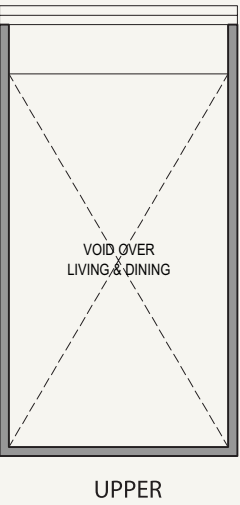
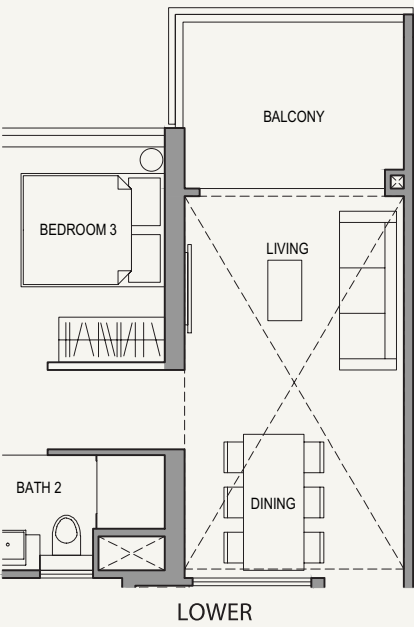
Type 3BR C1-H1  
95 sqm / 1023 sq ft

#22-07



Type 3BR C1-H2  
96 sqm / 1033 sq ft

#22-16



- LEGEND:
- Wall not allowed to be hacked or altered (including by way of drilling) (Refer to the clause pertaining to PPVC in the S&P Documents)
  - Services void space (excluded from strata area)
  - Rainwater downpipe shaft space (excluded from strata area)

Area include A/C ledge, balcony, PES and void (where applicable). Some units are mirror images of the apartment plans shown in the brochure. Please refer to the key plans for orientation. The plans are correct at the time of printing and are subject to such amendments as may be required or approved by the relevant authorities. The plans are not drawn to scale and are for the purpose of visual representation of the different available layouts. All floor areas are estimates only and are subject to final survey.

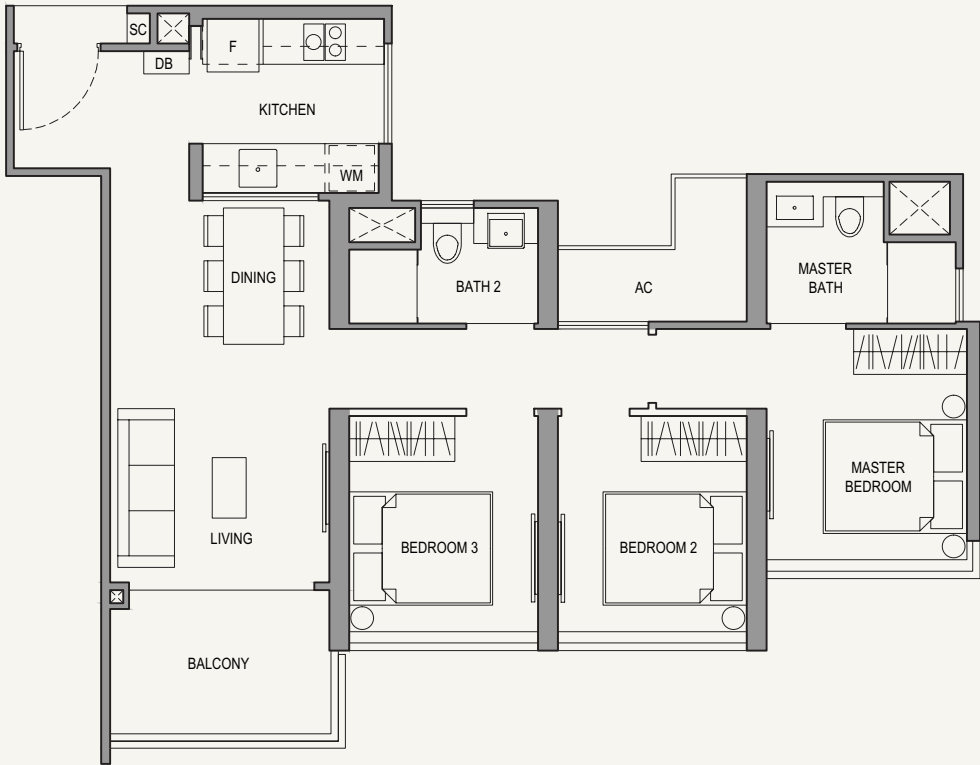




3-BEDROOM

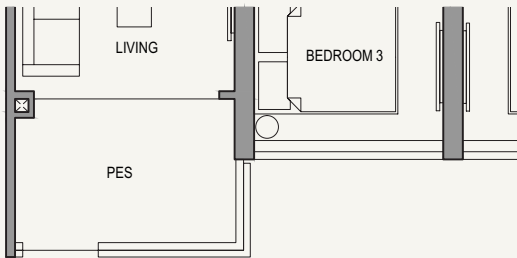
Type 3BR C2a  
80 sqm / 861sq ft

#03-12 to 05-12  
#03-29 to 05-29



Type 3BR C2-P  
80 sqm / 861 sq ft

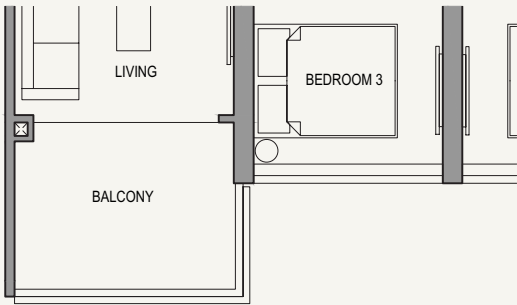
#02-12  
#02-29



3-BEDROOM

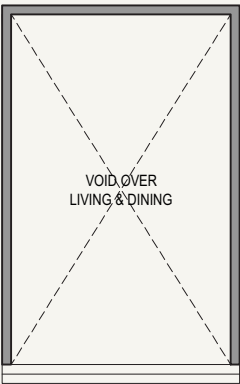
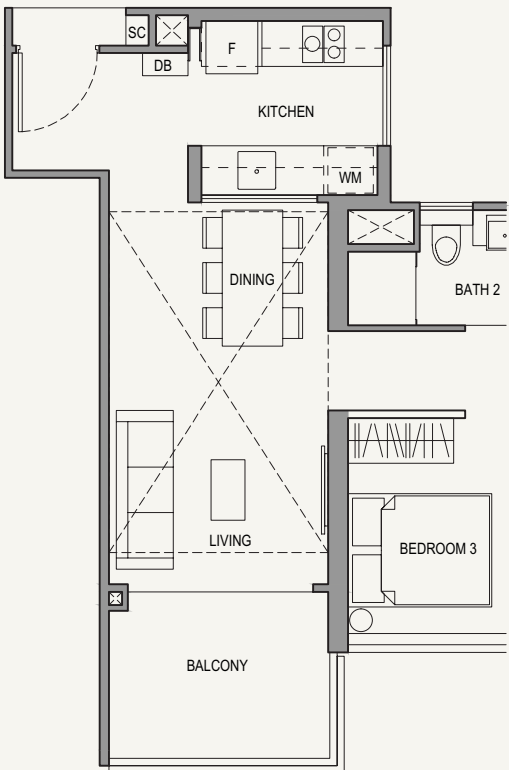
Type 3BR C2b  
81 sqm / 872 sq ft

#06-12 to 21-12  
#06-29 to 21-29



Type 3BR C2-H  
95 sqm / 1023 sq ft

#22-12  
#22-29

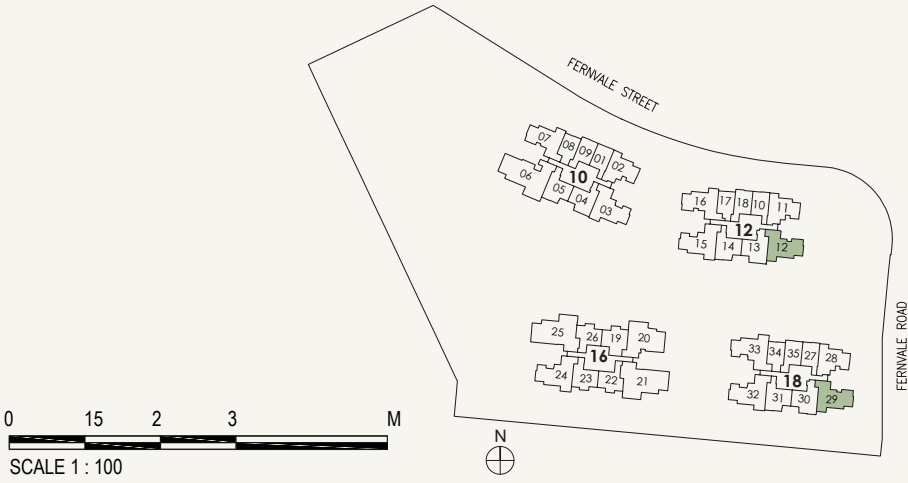


LOWER

UPPER

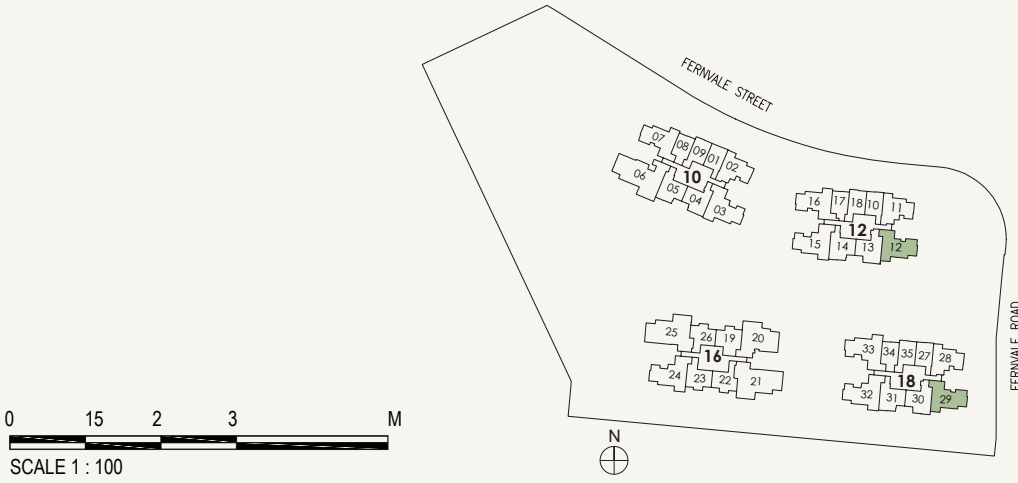
- LEGEND:
- Wall not allowed to be hacked or altered (including by way of drilling) (Refer to the clause pertaining to PPVC in the S&P Documents)
  - Services void space (excluded from strata area)
  - Rainwater downpipe shaft space (excluded from strata area)

Area include A/C ledge, balcony, PES and void (where applicable). Some units are mirror images of the apartment plans shown in the brochure. Please refer to the key plans for orientation. The plans are correct at the time of printing and are subject to such amendments as may be required or approved by the relevant authorities. The plans are not drawn to scale and are for the purpose of visual representation of the different available layouts. All floor areas are estimates only and are subject to final survey.



- LEGEND:
- Wall not allowed to be hacked or altered (including by way of drilling) (Refer to the clause pertaining to PPVC in the S&P Documents)
  - Services void space (excluded from strata area)
  - Rainwater downpipe shaft space (excluded from strata area)

Area include A/C ledge, balcony, PES and void (where applicable). Some units are mirror images of the apartment plans shown in the brochure. Please refer to the key plans for orientation. The plans are correct at the time of printing and are subject to such amendments as may be required or approved by the relevant authorities. The plans are not drawn to scale and are for the purpose of visual representation of the different available layouts. All floor areas are estimates only and are subject to final survey.

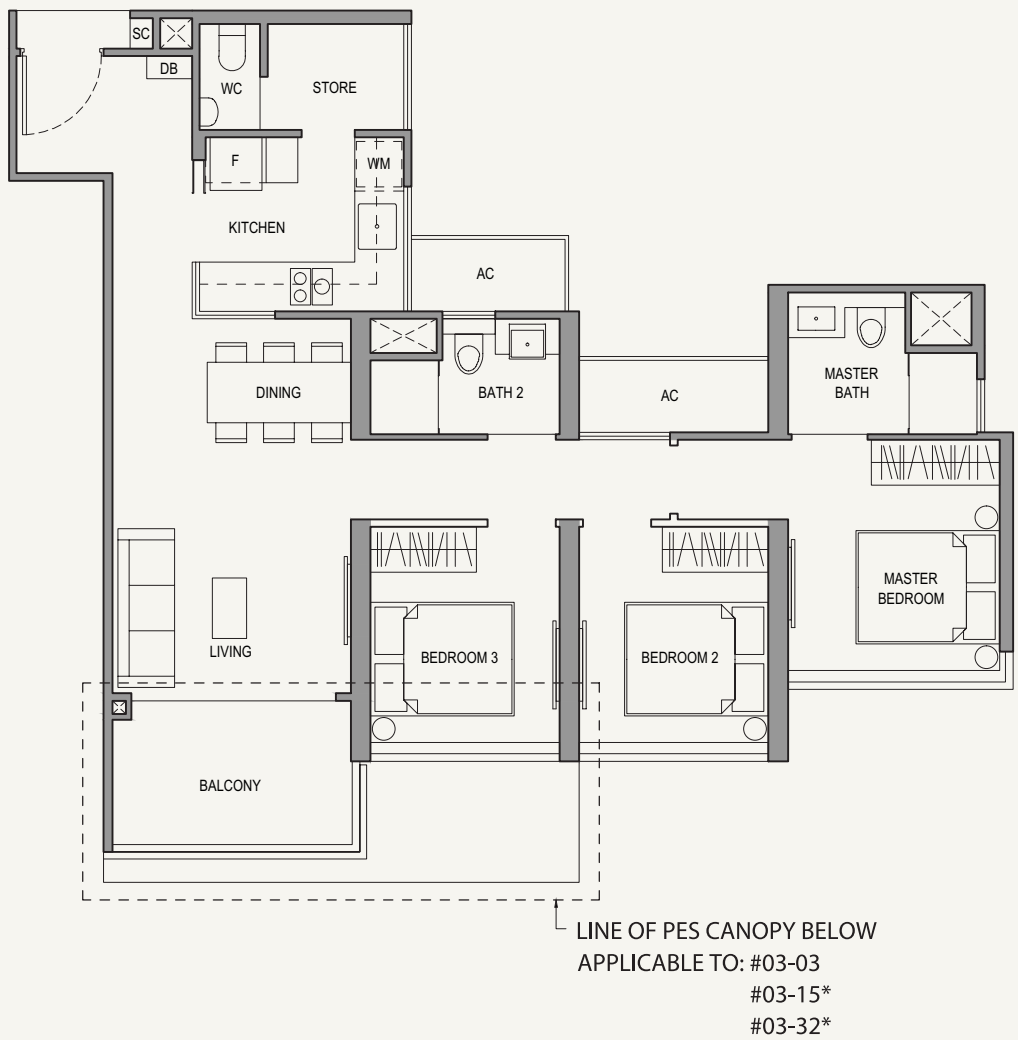




3-BEDROOM

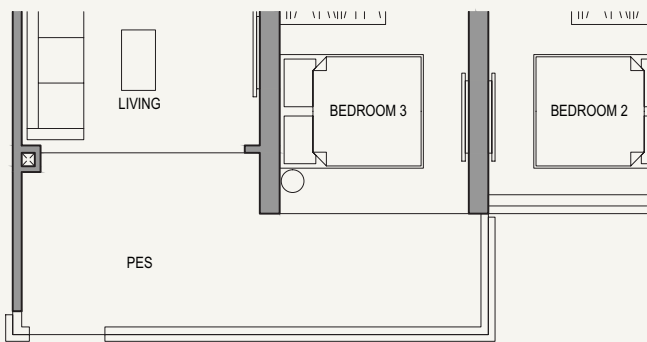
Type 3BR P1a  
90 sqm / 969sq ft

#03-03 to 05-03  
#03-15 to 05-15\*  
#03-32 to 05-32\*



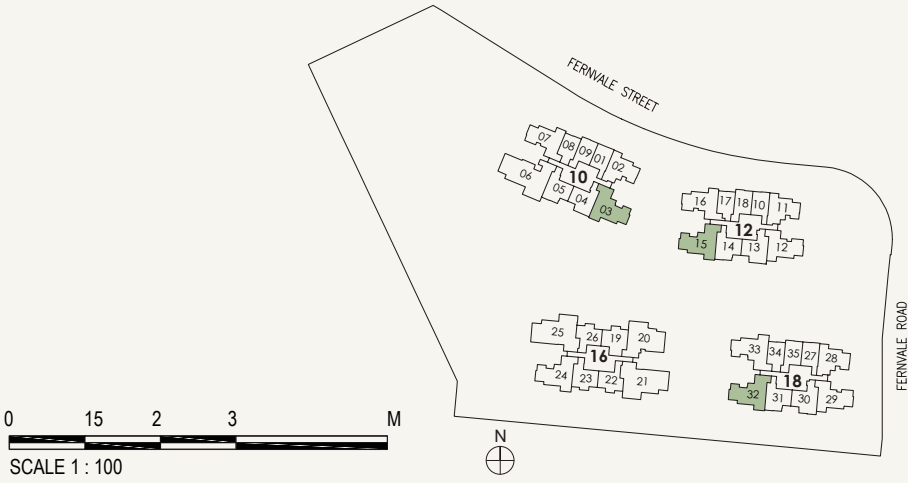
Type 3BR P1-P  
96 sqm / 1033 sq ft

#02-03  
#02-15\*  
#02-32\*



- LEGEND:
- Wall not allowed to be hacked or altered (including by way of drilling) (Refer to the clause pertaining to PPVC in the S&P Documents)
  - Services void space (excluded from strata area)
  - Rainwater downpipe shaft space (excluded from strata area)

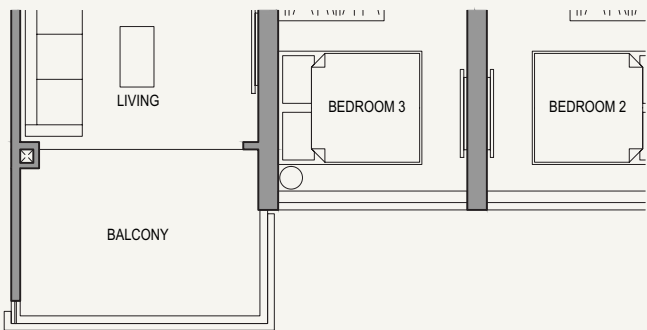
\*MIRROR IMAGE  
Area include A/C ledge, balcony, PES and void (where applicable). Some units are mirror images of the apartment plans shown in the brochure. Please refer to the key plans for orientation. The plans are correct at the time of printing and are subject to such amendments as may be required or approved by the relevant authorities. The plans are not drawn to scale and are for the purpose of visual representation of the different available layouts. All floor areas are estimates only and are subject to final survey.



3-BEDROOM

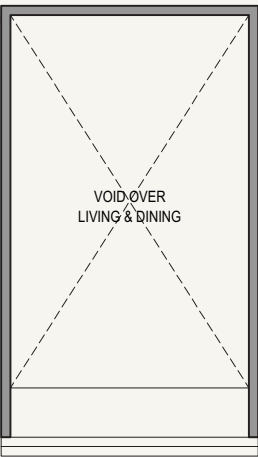
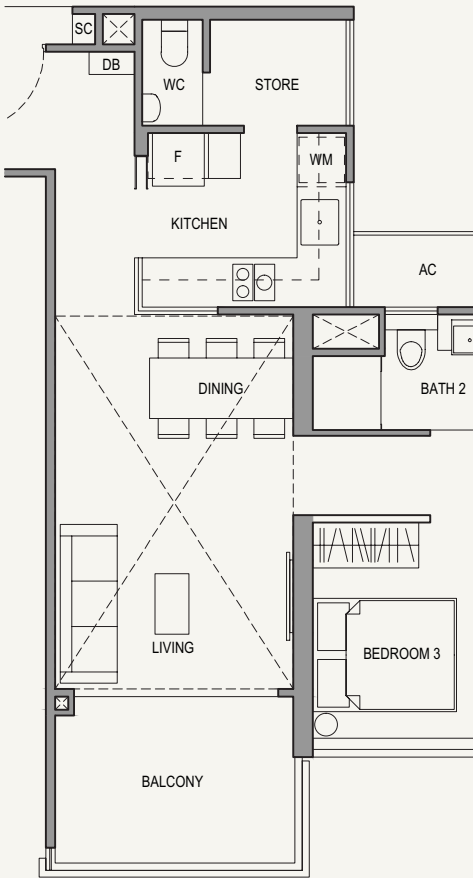
Type 3BR P1b  
91 sqm / 980 sq ft

#06-03 to 21-03  
#06-15 to 21-15\*  
#06-32 to 21-32\*



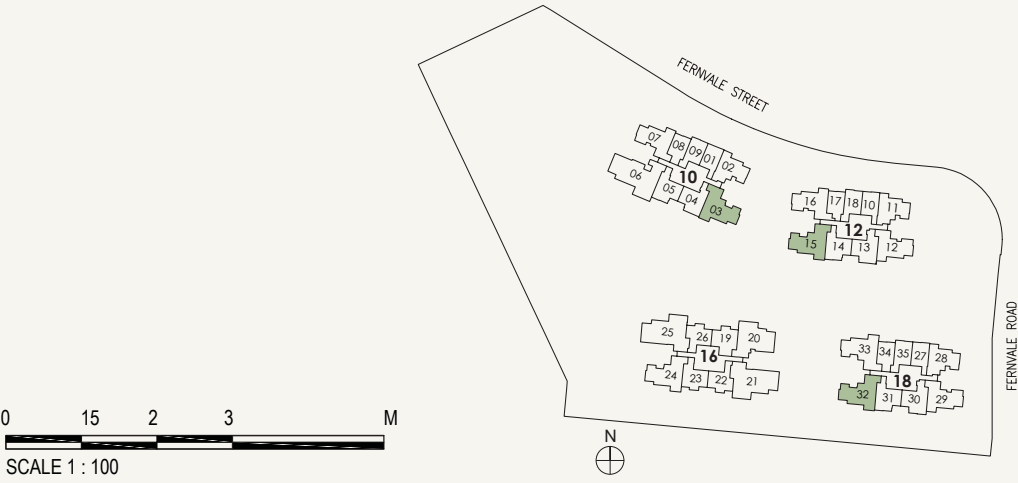
Type 3BR P1-H  
108 sqm / 1163 sq ft

#22-03  
#22-15\*  
#22-32\*



- LEGEND:
- Wall not allowed to be hacked or altered (including by way of drilling) (Refer to the clause pertaining to PPVC in the S&P Documents)
  - Services void space (excluded from strata area)
  - Rainwater downpipe shaft space (excluded from strata area)

\*MIRROR IMAGE  
Area include A/C ledge, balcony, PES and void (where applicable). Some units are mirror images of the apartment plans shown in the brochure. Please refer to the key plans for orientation. The plans are correct at the time of printing and are subject to such amendments as may be required or approved by the relevant authorities. The plans are not drawn to scale and are for the purpose of visual representation of the different available layouts. All floor areas are estimates only and are subject to final survey.

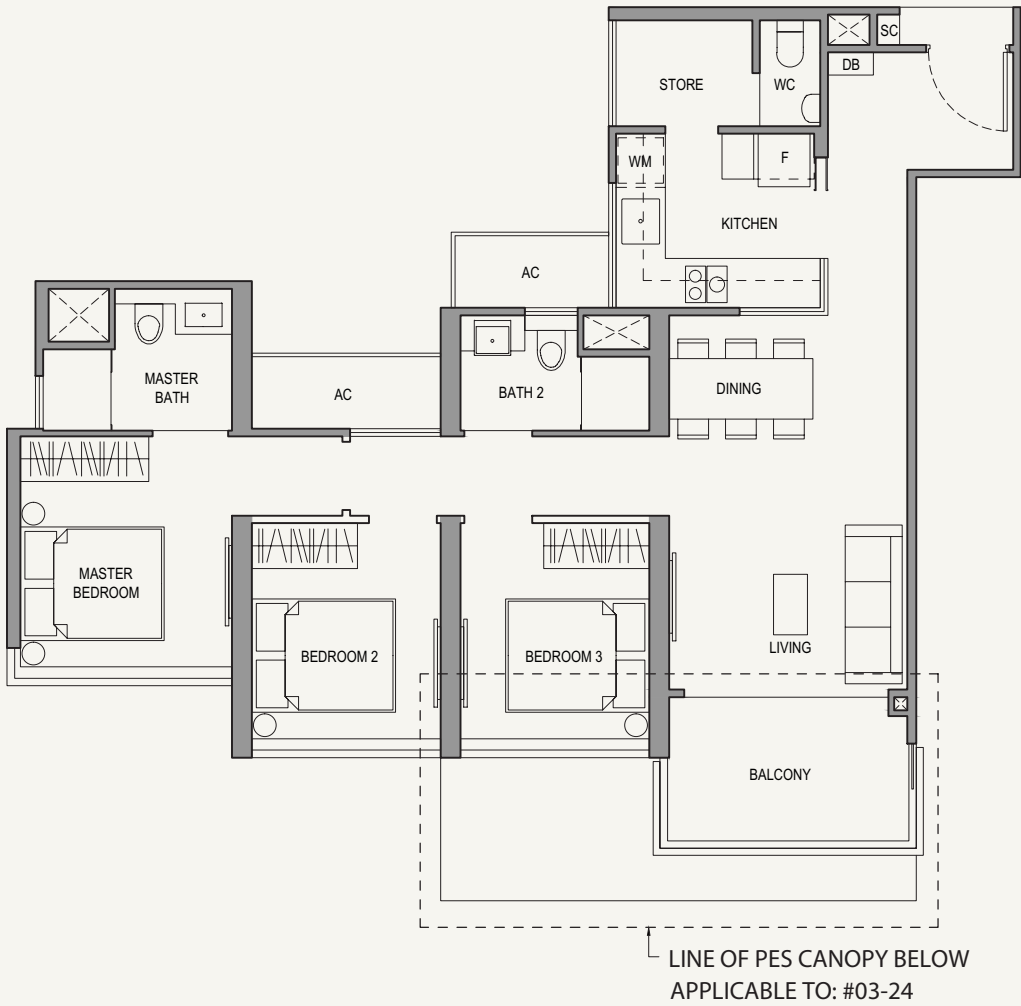




3-BEDROOM

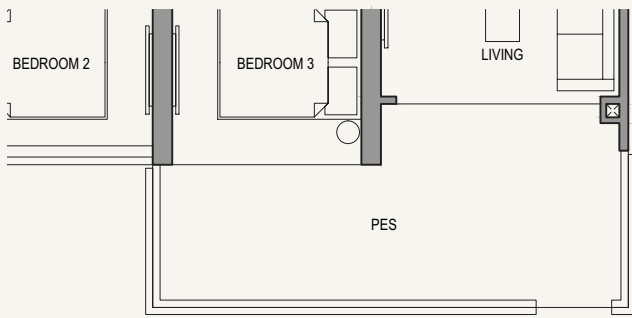
Type 3BR P2a  
89 sqm / 958 sq ft

#03-24 to 05-24



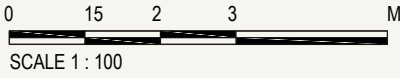
Type 3BR P2-P  
97 sqm / 1044 sq ft

#02-24



- LEGEND:
- Wall not allowed to be hacked or altered (including by way of drilling) (Refer to the clause pertaining to PPVC in the S&P Documents)
  - Services void space (excluded from strata area)
  - Rainwater downpipe shaft space (excluded from strata area)

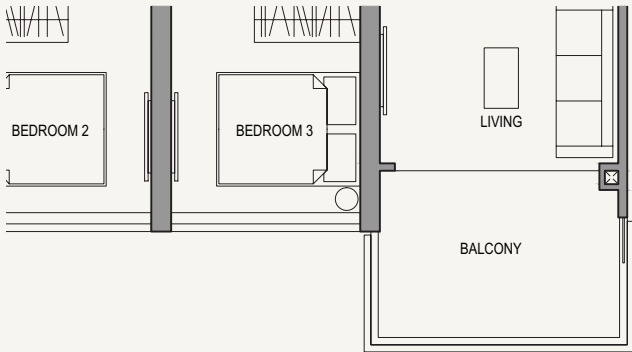
Area include A/C ledge, balcony, PES and void (where applicable). Some units are mirror images of the apartment plans shown in the brochure. Please refer to the key plans for orientation. The plans are correct at the time of printing and are subject to such amendments as may be required or approved by the relevant authorities. The plans are not drawn to scale and are for the purpose of visual representation of the different available layouts. All floor areas are estimates only and are subject to final survey.



3-BEDROOM

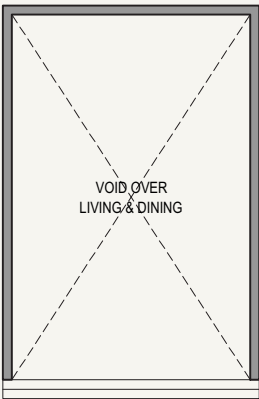
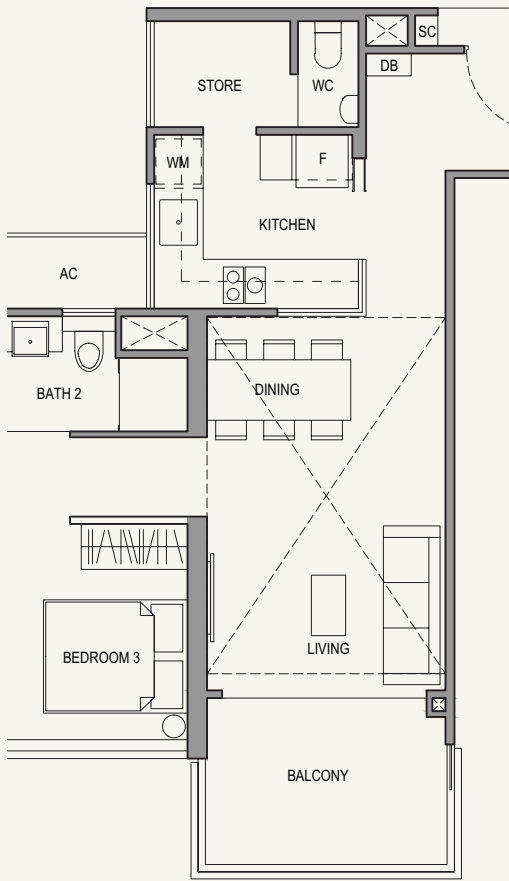
Type 3BR P2b  
90 sqm / 969 sq ft

#06-24 to 21-24



Type 3BR P2-H  
105 sqm / 1130 sq ft

#22-24

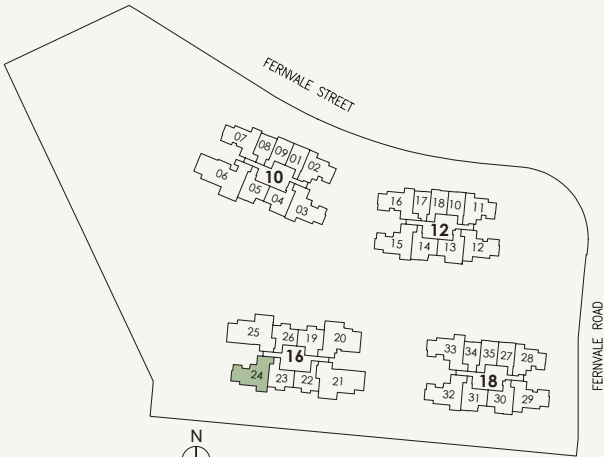
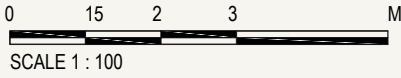


LOWER

UPPER

- LEGEND:
- Wall not allowed to be hacked or altered (including by way of drilling) (Refer to the clause pertaining to PPVC in the S&P Documents)
  - Services void space (excluded from strata area)
  - Rainwater downpipe shaft space (excluded from strata area)

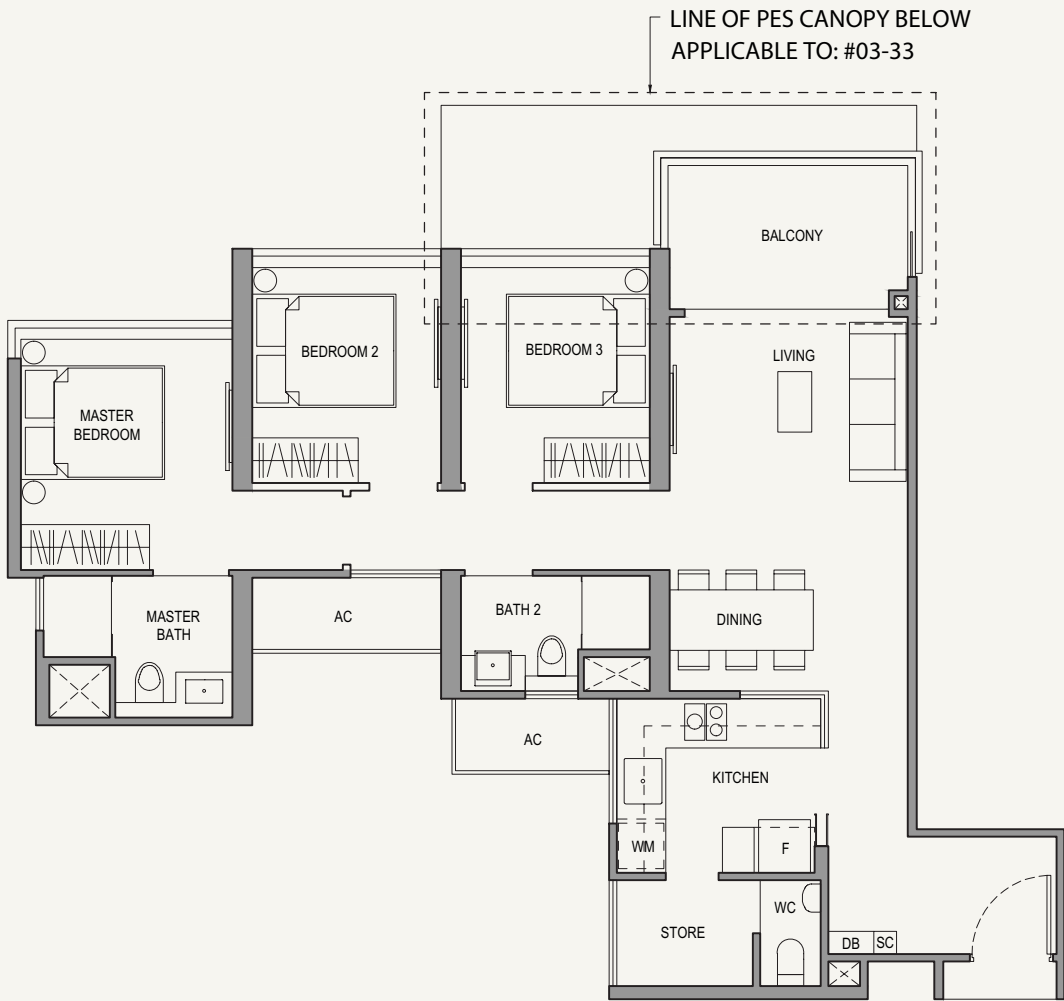
Area include A/C ledge, balcony, PES and void (where applicable). Some units are mirror images of the apartment plans shown in the brochure. Please refer to the key plans for orientation. The plans are correct at the time of printing and are subject to such amendments as may be required or approved by the relevant authorities. The plans are not drawn to scale and are for the purpose of visual representation of the different available layouts. All floor areas are estimates only and are subject to final survey.



# 3-BEDROOM

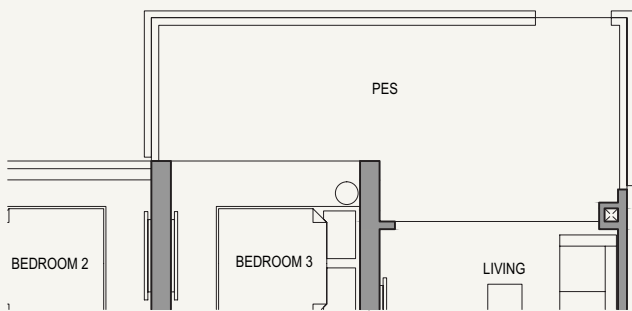
Type 3BR P3a  
90 sqm / 969 sq ft

#03-33 to 05-33



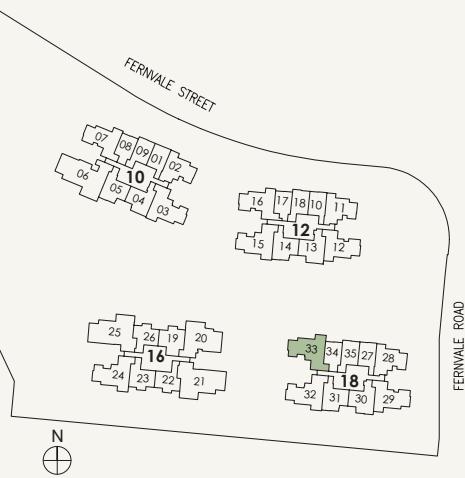
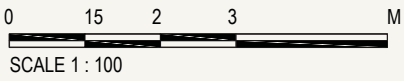
Type 3BR P3-P  
98 sqm / 1055 sq ft

#02-33



- LEGEND:
- Wall not allowed to be hacked or altered (including by way of drilling) (Refer to the clause pertaining to PPVC in the S&P Documents)
  - Services void space (excluded from strata area)
  - Rainwater downpipe shaft space (excluded from strata area)

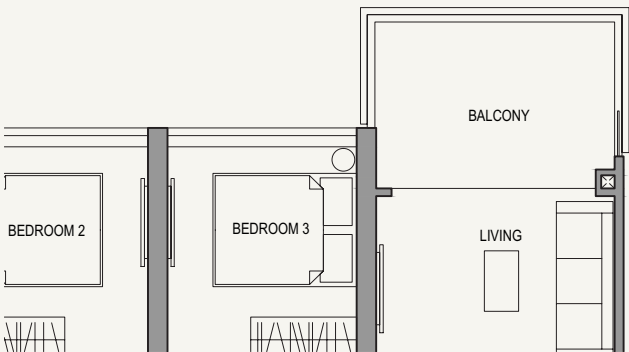
Area include A/C ledge, balcony, PES and void (where applicable). Some units are mirror images of the apartment plans shown in the brochure. Please refer to the key plans for orientation. The plans are correct at the time of printing and are subject to such amendments as may be required or approved by the relevant authorities. The plans are not drawn to scale and are for the purpose of visual representation of the different available layouts. All floor areas are estimates only and are subject to final survey.



# 3-BEDROOM

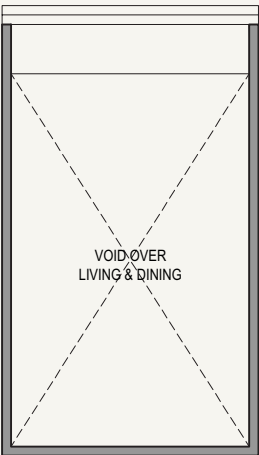
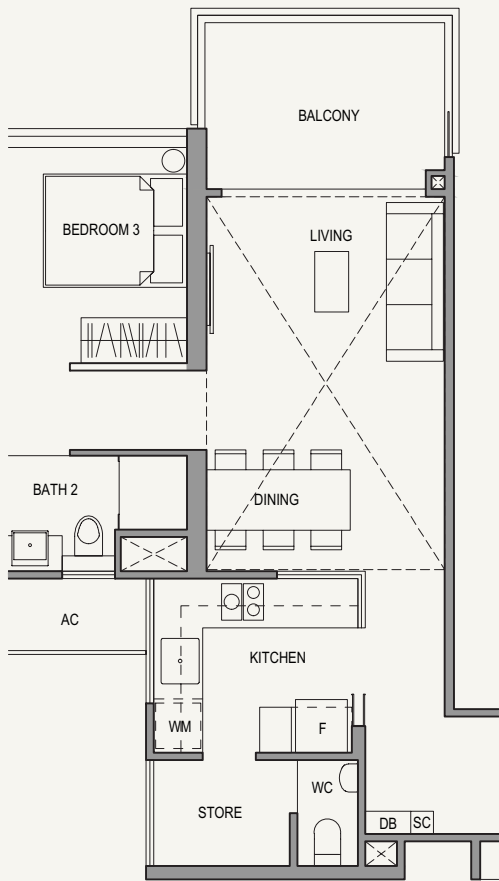
Type 3BR P3b  
91 sqm / 980 sq ft

#06-33 to 21-33



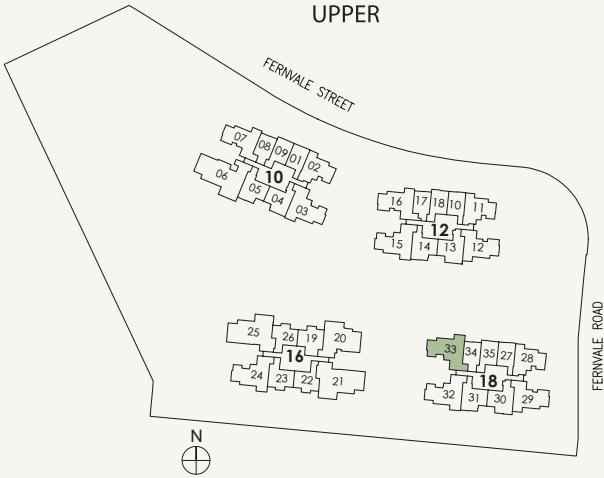
Type 3BR P3-H  
108 sqm / 1163 sq ft

#22-33



- LEGEND:
- Wall not allowed to be hacked or altered (including by way of drilling) (Refer to the clause pertaining to PPVC in the S&P Documents)
  - Services void space (excluded from strata area)
  - Rainwater downpipe shaft space (excluded from strata area)

Area include A/C ledge, balcony, PES and void (where applicable). Some units are mirror images of the apartment plans shown in the brochure. Please refer to the key plans for orientation. The plans are correct at the time of printing and are subject to such amendments as may be required or approved by the relevant authorities. The plans are not drawn to scale and are for the purpose of visual representation of the different available layouts. All floor areas are estimates only and are subject to final survey.







## 4-BEDROOM

### UNIT TYPES

4BR Ca  
105 sqm / 1130 sq ft

4BR C-P  
121 sqm / 1302 sq ft

4BR Cb  
107 sqm / 1152 sq ft

4BR C-H  
124 sqm / 1335 sq ft

4BR Pa  
116 sqm / 1249 sq ft

4BR P-P  
135 sqm / 1453 sq ft

4BR Pb  
119 sqm / 1281 sq ft

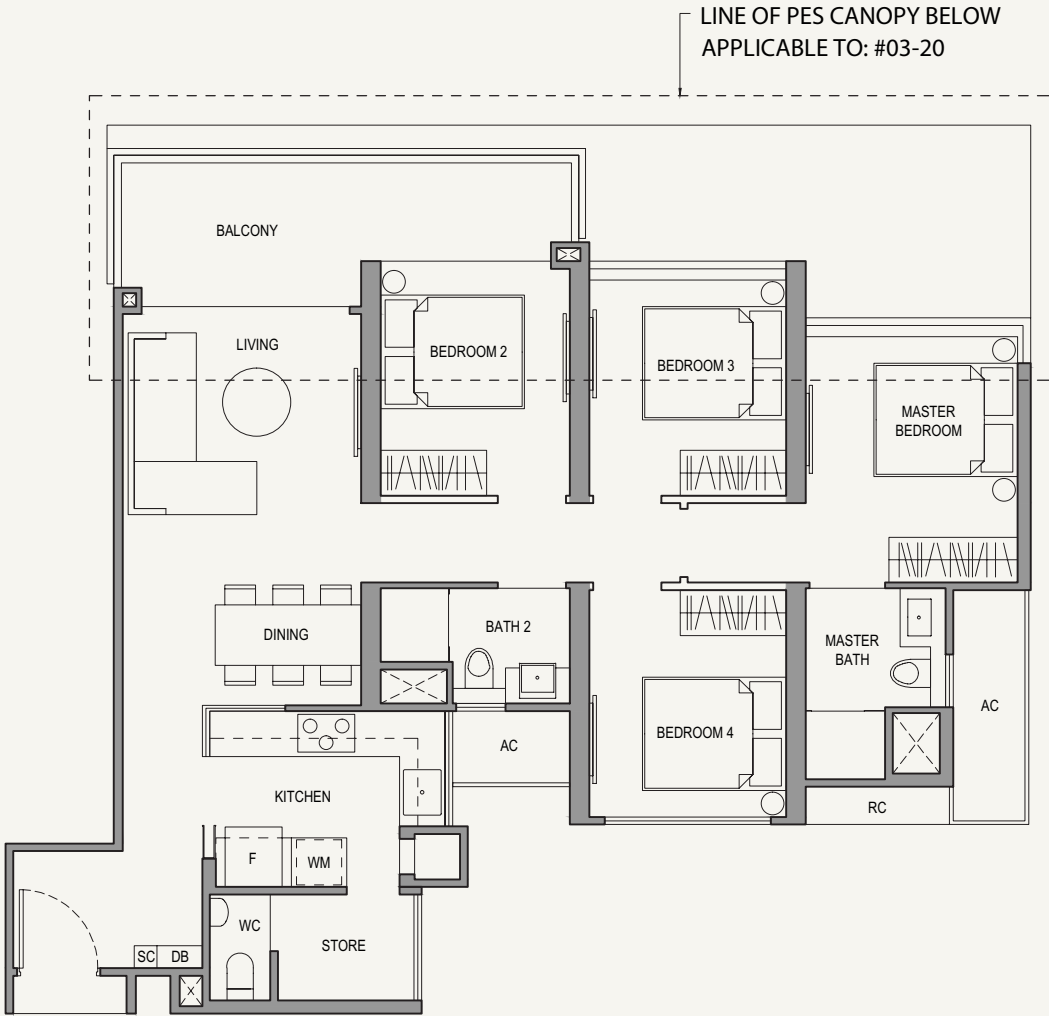
4BR P-H  
140 sqm / 1507 sq ft



# 4-BEDROOM

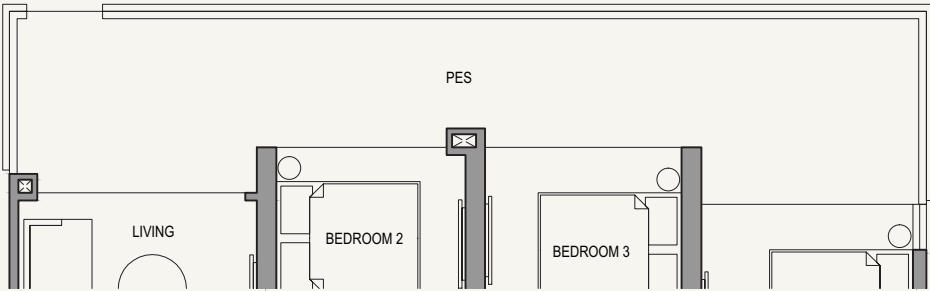
Type 4BR Ca  
105 sqm / 1130 sq ft

#03-20 to 05-20



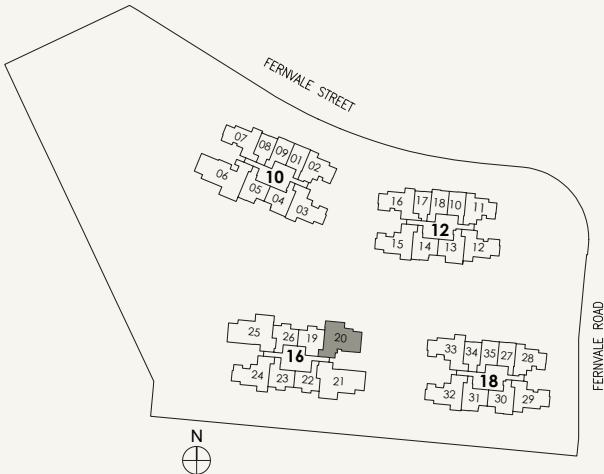
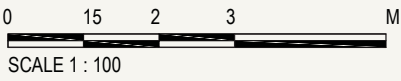
Type 4BR C-P  
121 sqm / 1302 sq ft

#02-20



- LEGEND:
- Wall not allowed to be hacked or altered (including by way of drilling) (Refer to the clause pertaining to PPVC in the S&P Documents)
  - Services void space (excluded from strata area)
  - Rainwater downpipe shaft space (excluded from strata area)

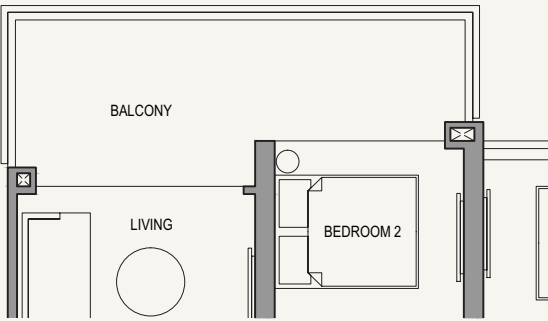
Area include A/C ledge, balcony, PES and void (where applicable). Some units are mirror images of the apartment plans shown in the brochure. Please refer to the key plans for orientation. The plans are correct at the time of printing and are subject to such amendments as may be required or approved by the relevant authorities. The plans are not drawn to scale and are for the purpose of visual representation of the different available layouts. All floor areas are estimates only and are subject to final survey.



# 4-BEDROOM

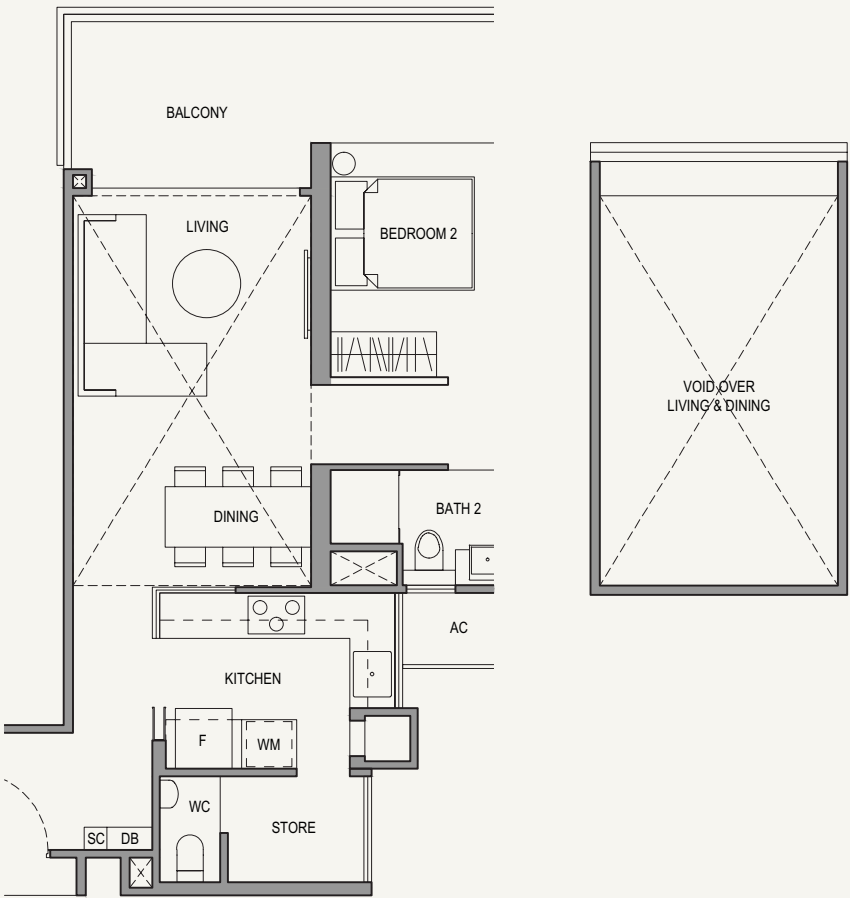
Type 4BR Cb  
107 sqm / 1152 sq ft

#06-20 to 21-20



Type 4BR C-H  
124 sqm / 1335 sq ft

#22-20

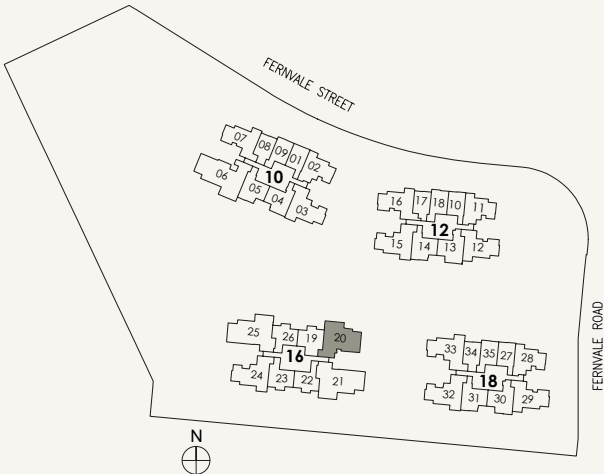
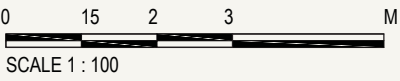


LOWER

UPPER

- LEGEND:
- Wall not allowed to be hacked or altered (including by way of drilling) (Refer to the clause pertaining to PPVC in the S&P Documents)
  - Services void space (excluded from strata area)
  - Rainwater downpipe shaft space (excluded from strata area)

Area include A/C ledge, balcony, PES and void (where applicable). Some units are mirror images of the apartment plans shown in the brochure. Please refer to the key plans for orientation. The plans are correct at the time of printing and are subject to such amendments as may be required or approved by the relevant authorities. The plans are not drawn to scale and are for the purpose of visual representation of the different available layouts. All floor areas are estimates only and are subject to final survey.

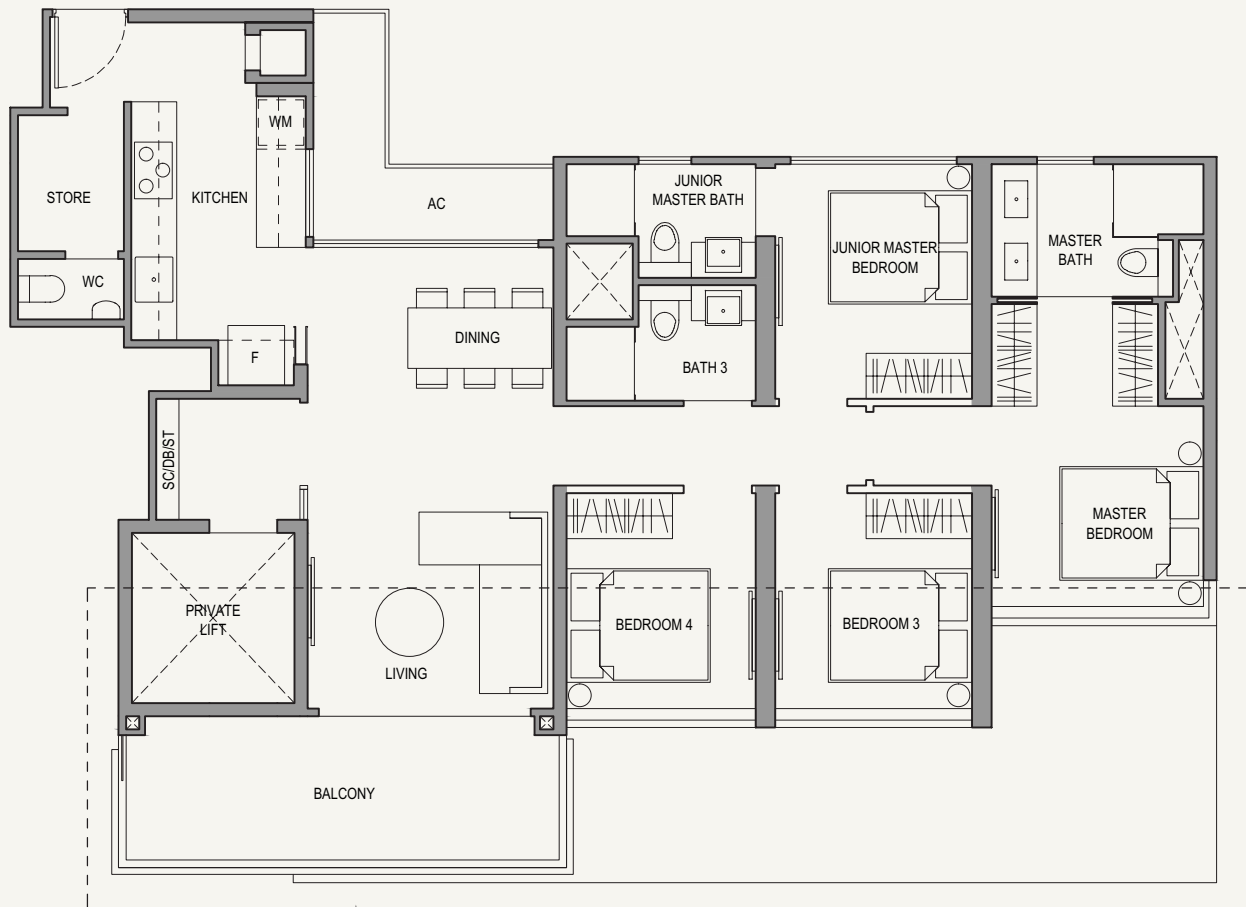




# 4-BEDROOM

Type 4BR Pa  
116 sqm / 1249 sq ft

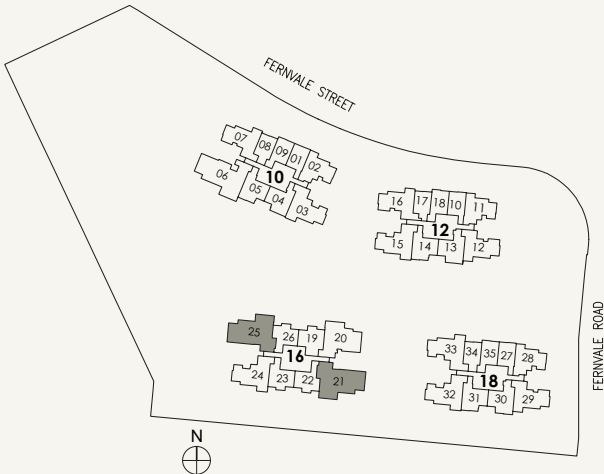
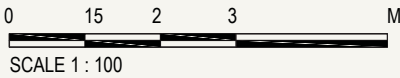
#03-21 to 05-21  
#03-25 to 05-25\*



LINE OF PES CANOPY BELOW  
APPLICABLE TO: #03-21  
#03-25\*

- LEGEND:
- Wall not allowed to be hacked or altered (including by way of drilling) (Refer to the clause pertaining to PPVC in the S&P Documents)
  - Services void space (excluded from strata area)
  - Rainwater downpipe shaft space (excluded from strata area)

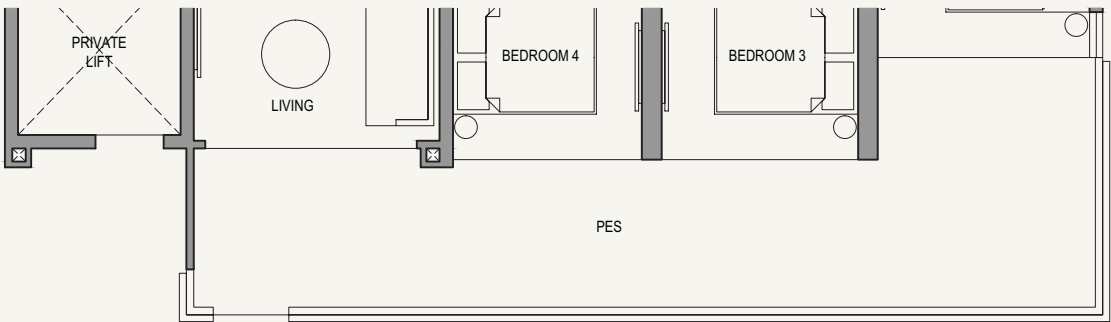
\*MIRROR IMAGE  
Area include A/C ledge, balcony, PES and void (where applicable). Some units are mirror images of the apartment plans shown in the brochure. Please refer to the key plans for orientation. The plans are correct at the time of printing and are subject to such amendments as may be required or approved by the relevant authorities. The plans are not drawn to scale and are for the purpose of visual representation of the different available layouts. All floor areas are estimates only and are subject to final survey.



# 4-BEDROOM

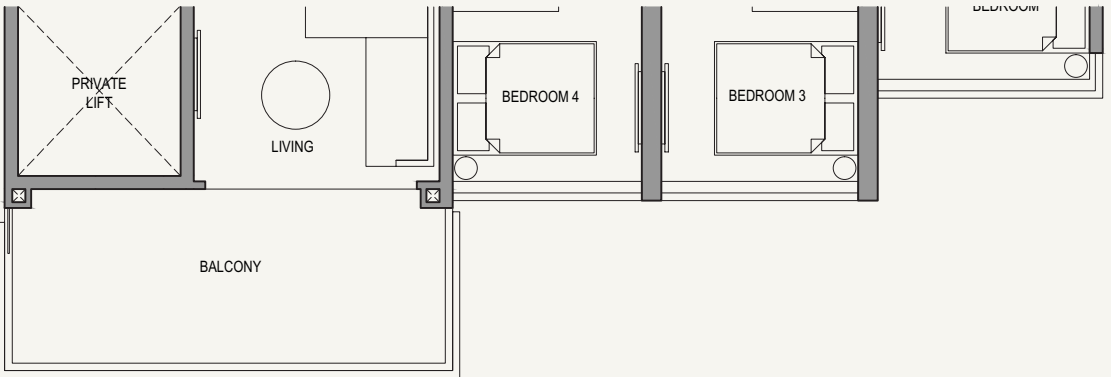
Type 4BR P-P  
135 sqm / 1453 sq ft

#02-21  
#02-25\*



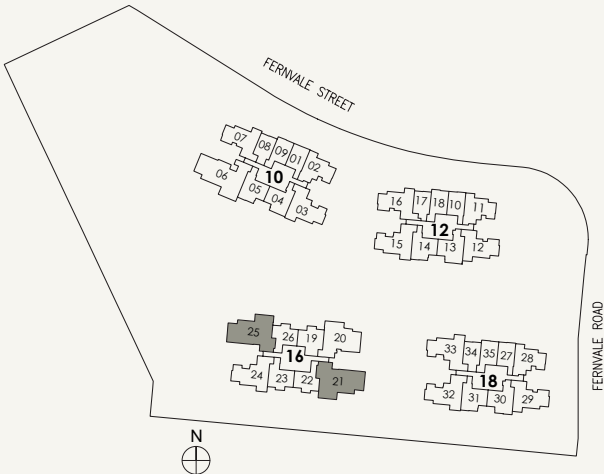
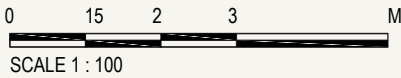
Type 4BR Pb  
119 sqm / 1281 sq ft

#06-21 to 21-21  
#06-25 to 21-25\*



- LEGEND:
- Wall not allowed to be hacked or altered (including by way of drilling) (Refer to the clause pertaining to PPVC in the S&P Documents)
  - Services void space (excluded from strata area)
  - Rainwater downpipe shaft space (excluded from strata area)

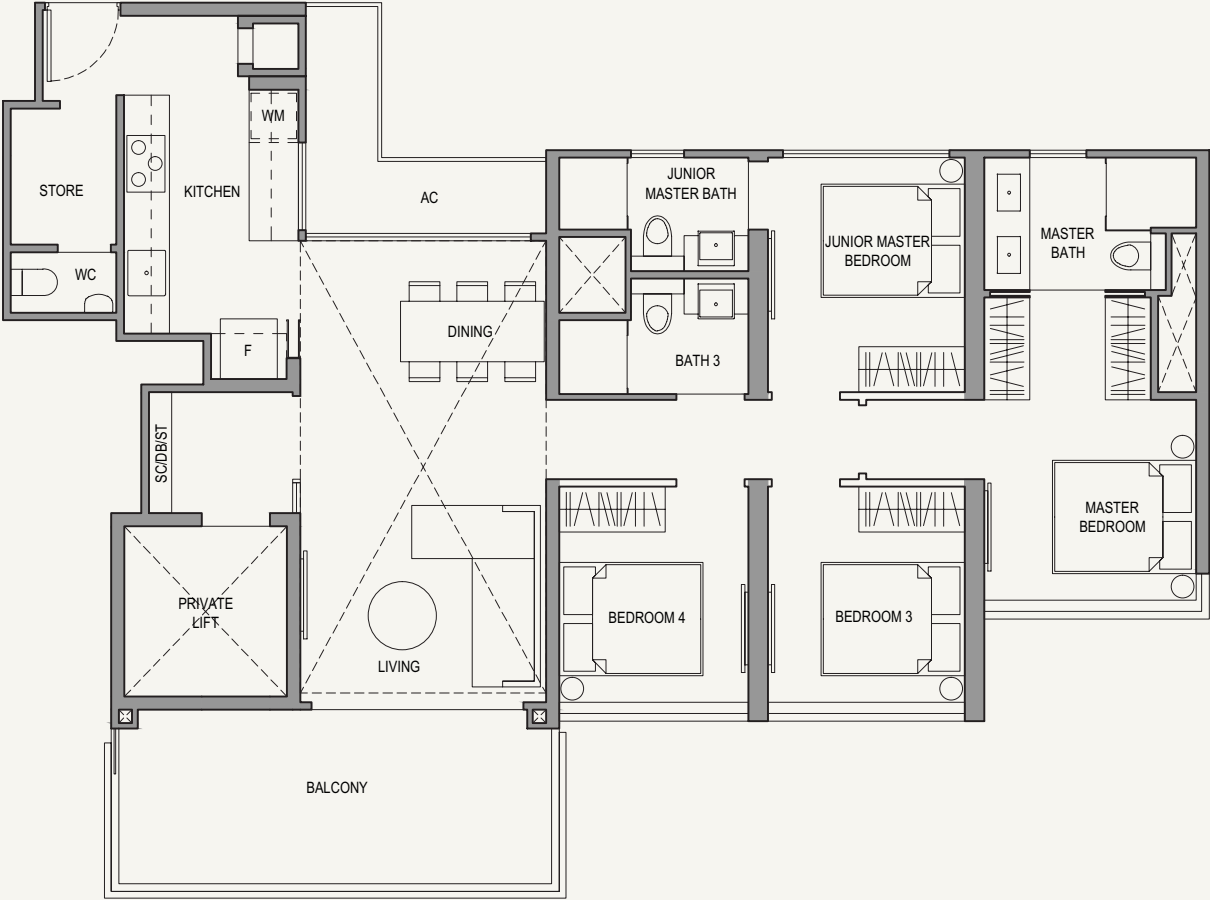
\*MIRROR IMAGE  
Area include A/C ledge, balcony, PES and void (where applicable). Some units are mirror images of the apartment plans shown in the brochure. Please refer to the key plans for orientation. The plans are correct at the time of printing and are subject to such amendments as may be required or approved by the relevant authorities. The plans are not drawn to scale and are for the purpose of visual representation of the different available layouts. All floor areas are estimates only and are subject to final survey.



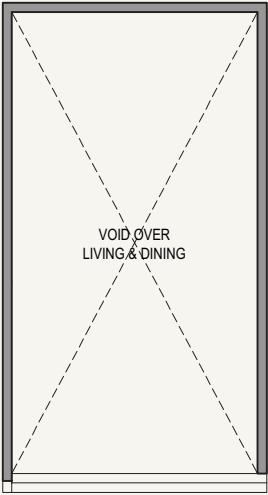
# 4-BEDROOM

Type 4BR P-H  
140 sqm / 1507 sq ft

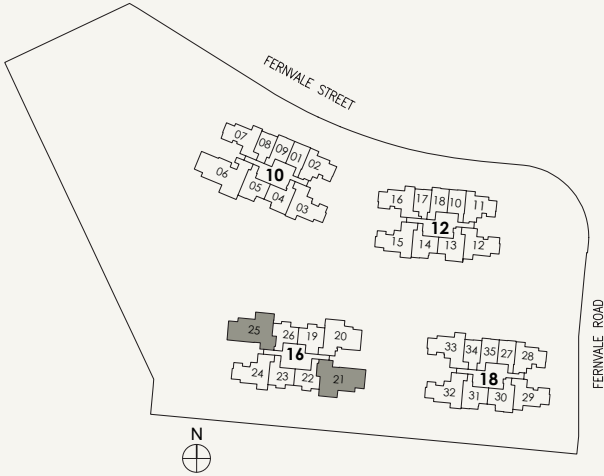
#22-21  
#22-25\*



LOWER

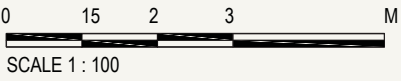


UPPER



- LEGEND:
- Wall not allowed to be hacked or altered (including by way of drilling) (Refer to the clause pertaining to PPVC in the S&P Documents)
  - Services void space (excluded from strata area)
  - Rainwater downpipe shaft space (excluded from strata area)

\*MIRROR IMAGE  
Area include A/C ledge, balcony, PES and void (where applicable). Some units are mirror images of the apartment plans shown in the brochure. Please refer to the key plans for orientation. The plans are correct at the time of printing and are subject to such amendments as may be required or approved by the relevant authorities. The plans are not drawn to scale and are for the purpose of visual representation of the different available layouts. All floor areas are estimates only and are subject to final survey.



## 5-BEDROOM

### UNIT TYPES

5BRa 131 sqm / 1410 sq ft	5BR-P 155 sqm / 1668 sq ft
5BRb 135 sqm / 1453 sq ft	5BR-H 156 sqm / 1679 sq ft

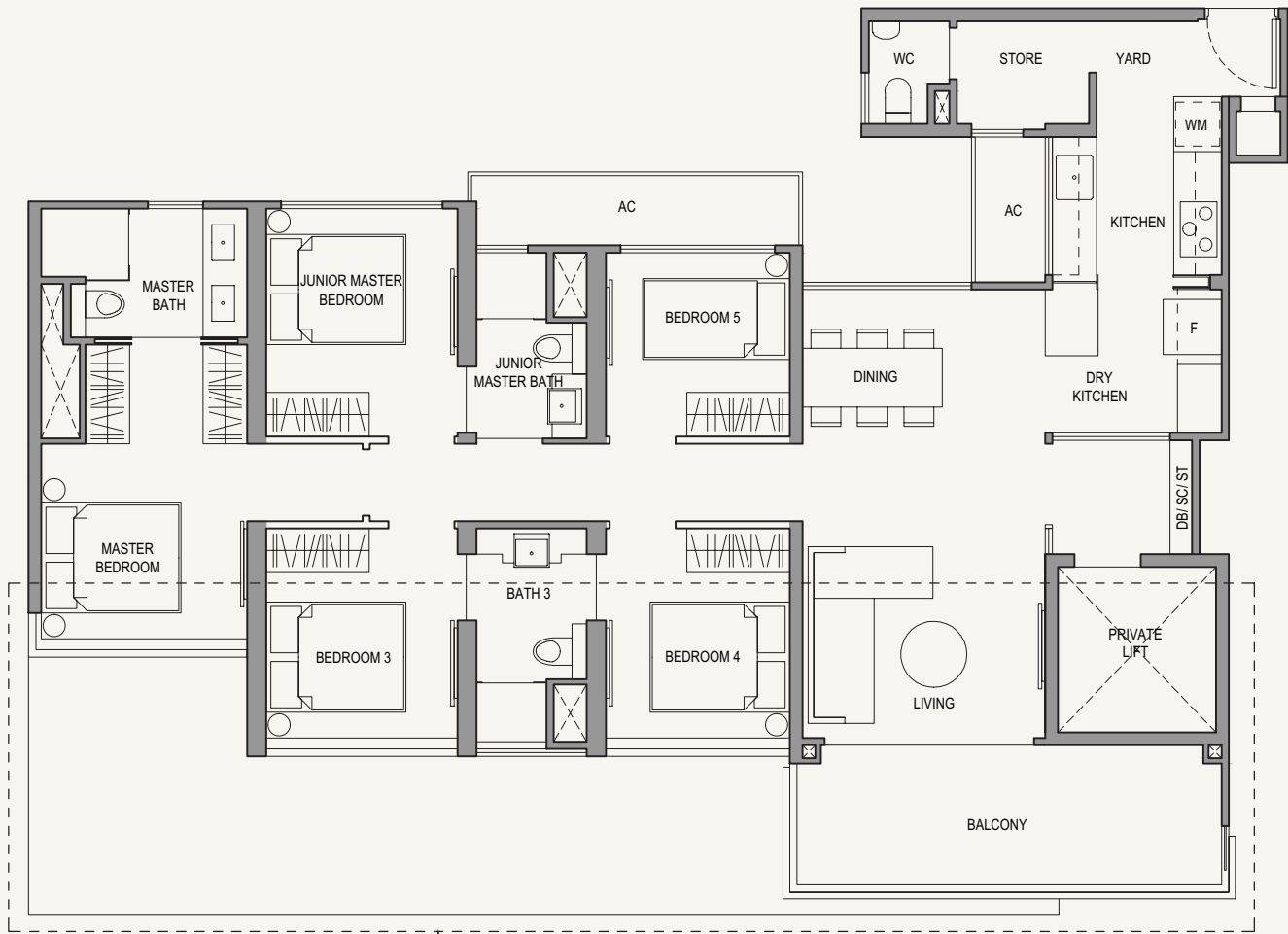




# 5-BEDROOM

Type 5BRa  
131 sqm / 1410 sq ft

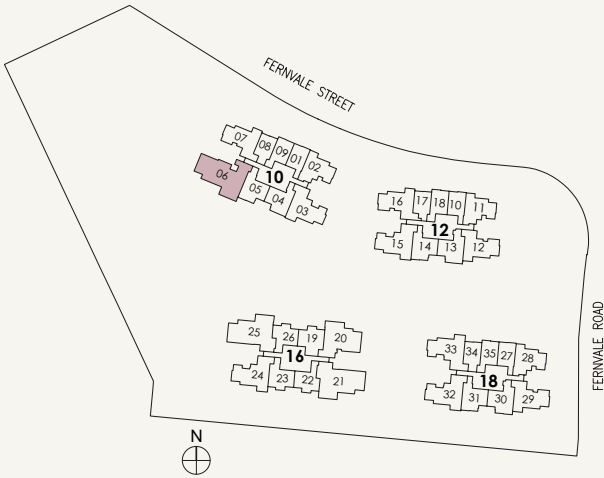
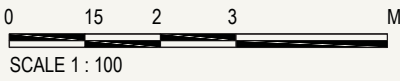
#03-06 to 05-06



LINE OF PES CANOPY BELOW  
APPLICABLE TO: #03-06

- LEGEND:
- Wall not allowed to be hacked or altered (including by way of drilling) (Refer to the clause pertaining to PPVC in the S&P Documents)
  - Services void space (excluded from strata area)
  - Rainwater downpipe shaft space (excluded from strata area)

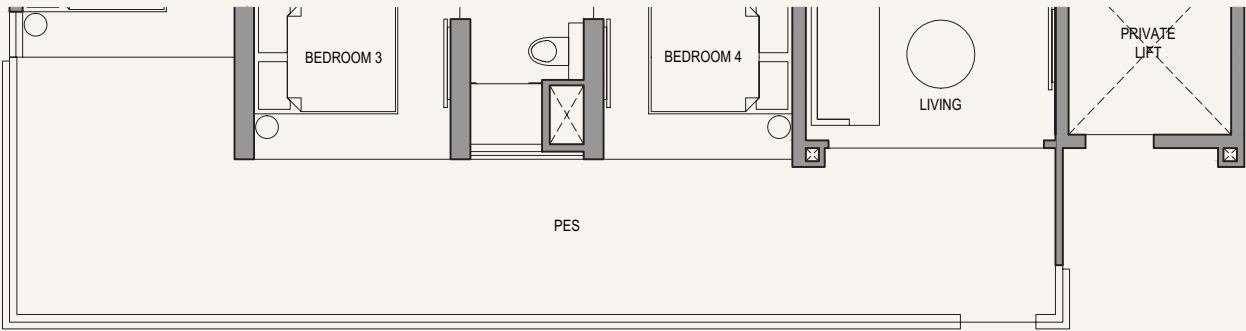
Area include A/C ledge, balcony, PES and void (where applicable). Some units are mirror images of the apartment plans shown in the brochure. Please refer to the key plans for orientation. The plans are correct at the time of printing and are subject to such amendments as may be required or approved by the relevant authorities. The plans are not drawn to scale and are for the purpose of visual representation of the different available layouts. All floor areas are estimates only and are subject to final survey.



# 5-BEDROOM

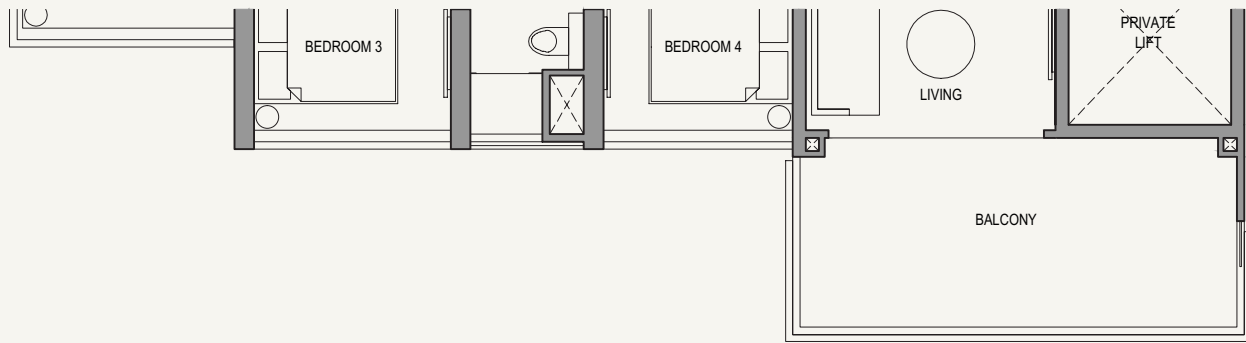
Type 5BR-P  
155 sqm / 1668 sq ft

#02-06



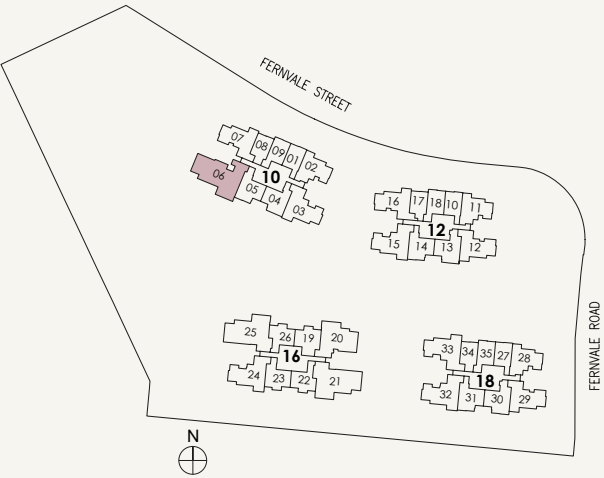
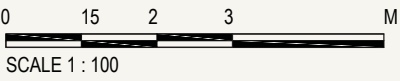
Type 5BRb  
135 sqm / 1453 sq ft

#06-06 to 21-06



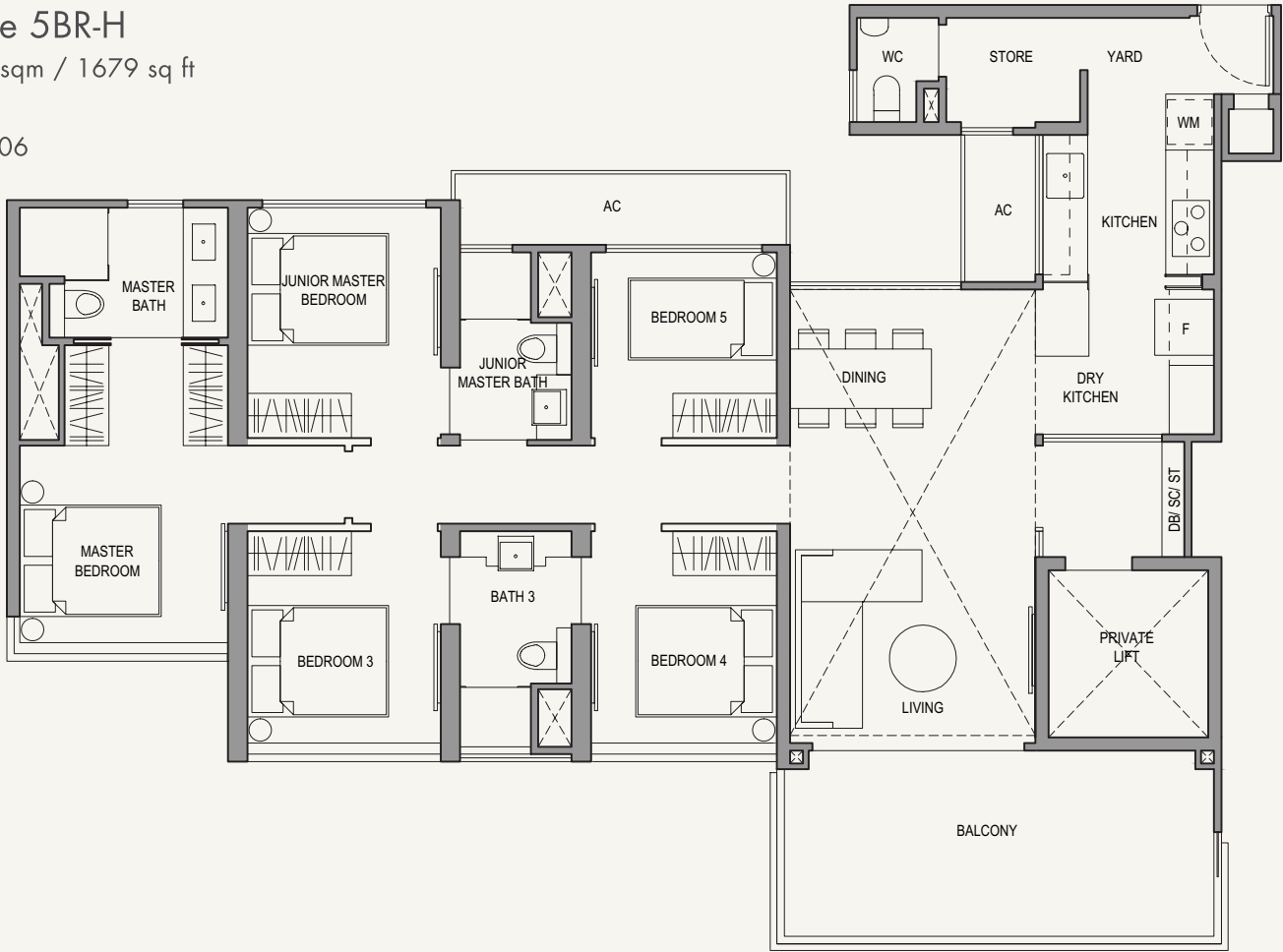
- LEGEND:
- Wall not allowed to be hacked or altered (including by way of drilling) (Refer to the clause pertaining to PPVC in the S&P Documents)
  - Services void space (excluded from strata area)
  - Rainwater downpipe shaft space (excluded from strata area)

Area include A/C ledge, balcony, PES and void (where applicable). Some units are mirror images of the apartment plans shown in the brochure. Please refer to the key plans for orientation. The plans are correct at the time of printing and are subject to such amendments as may be required or approved by the relevant authorities. The plans are not drawn to scale and are for the purpose of visual representation of the different available layouts. All floor areas are estimates only and are subject to final survey.

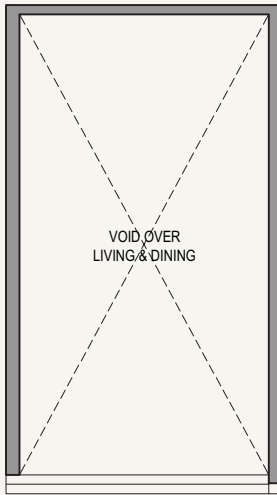


# 5-BEDROOM

Type 5BR-H  
156 sqm / 1679 sq ft  
#22-06



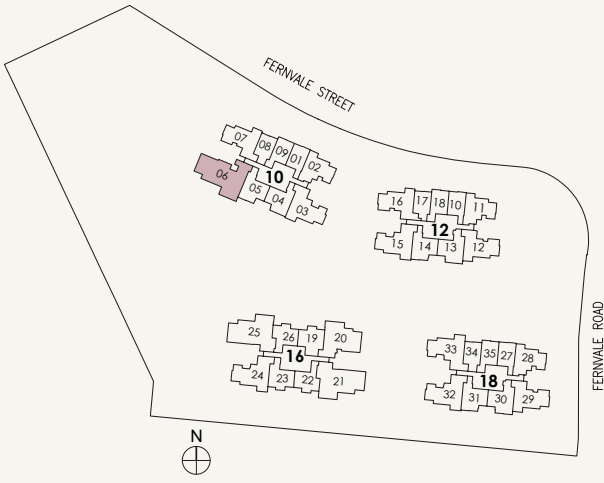
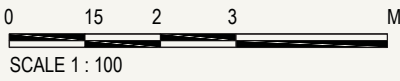
LOWER



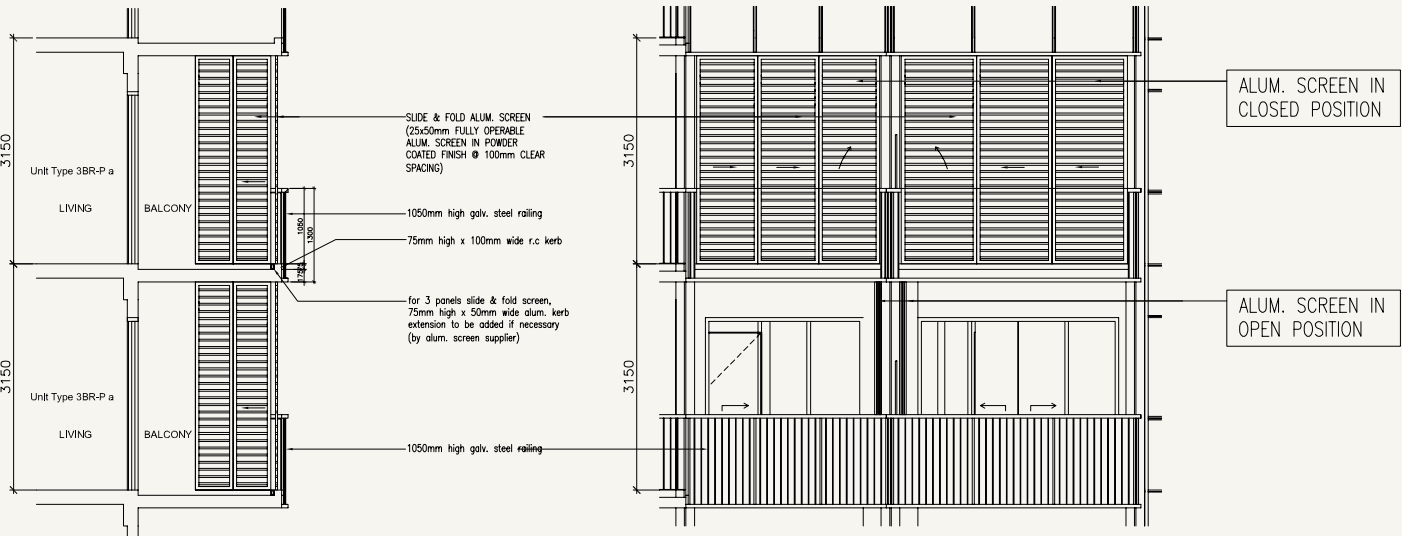
UPPER

- LEGEND:
- Wall not allowed to be hacked or altered (including by way of drilling) (Refer to the clause pertaining to PPVC in the S&P Documents)
  - Services void space (excluded from strata area)
  - Rainwater downpipe shaft space (excluded from strata area)

Area include A/C ledge, balcony, PES and void (where applicable). Some units are mirror images of the apartment plans shown in the brochure. Please refer to the key plans for orientation. The plans are correct at the time of printing and are subject to such amendments as may be required or approved by the relevant authorities. The plans are not drawn to scale and are for the purpose of visual representation of the different available layouts. All floor areas are estimates only and are subject to final survey.

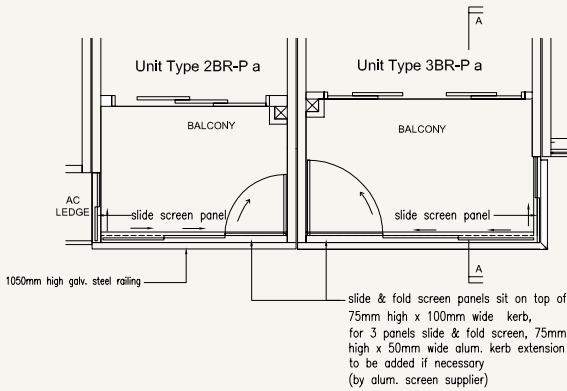


# TYPICAL BALCONY WITH SCREEN



SECTION A-A (TYPICAL SECTIONS OF BALCONY WITH SCREEN)  
1 : 50

TYPICAL FRONT ELEVATION OF BALCONY WITH SCREEN  
1 : 50



TYPICAL PLAN OF BALCONY WITH SCREEN  
1 : 50



Jointly Developed by



Disclaimer

Whilst every reasonable care has been taken in preparing this brochure and constructing the model, sales gallery and showflats, the developer and its agent(s) shall not be held responsible for any inaccuracies and omissions. All statements are believed to be correct but shall not be regarded as statements or representation of fact. Visual representation including models, drawings, illustrations, photographs and art renderings are artist's impression only and are not to be regarded as representation of fact. Floor areas and other measurements are approximate only and are subject to final survey. All information, plans and specification are current at the time of print and are subject to changes as may be required by the relevant authorities and cannot form part of the contract. The Sale & Purchase Agreement shall form the entire agreement between the developer and the purchaser, and shall in no way be modified by any statements or representations whether contained in this brochure or given by the developer's agents or otherwise.



